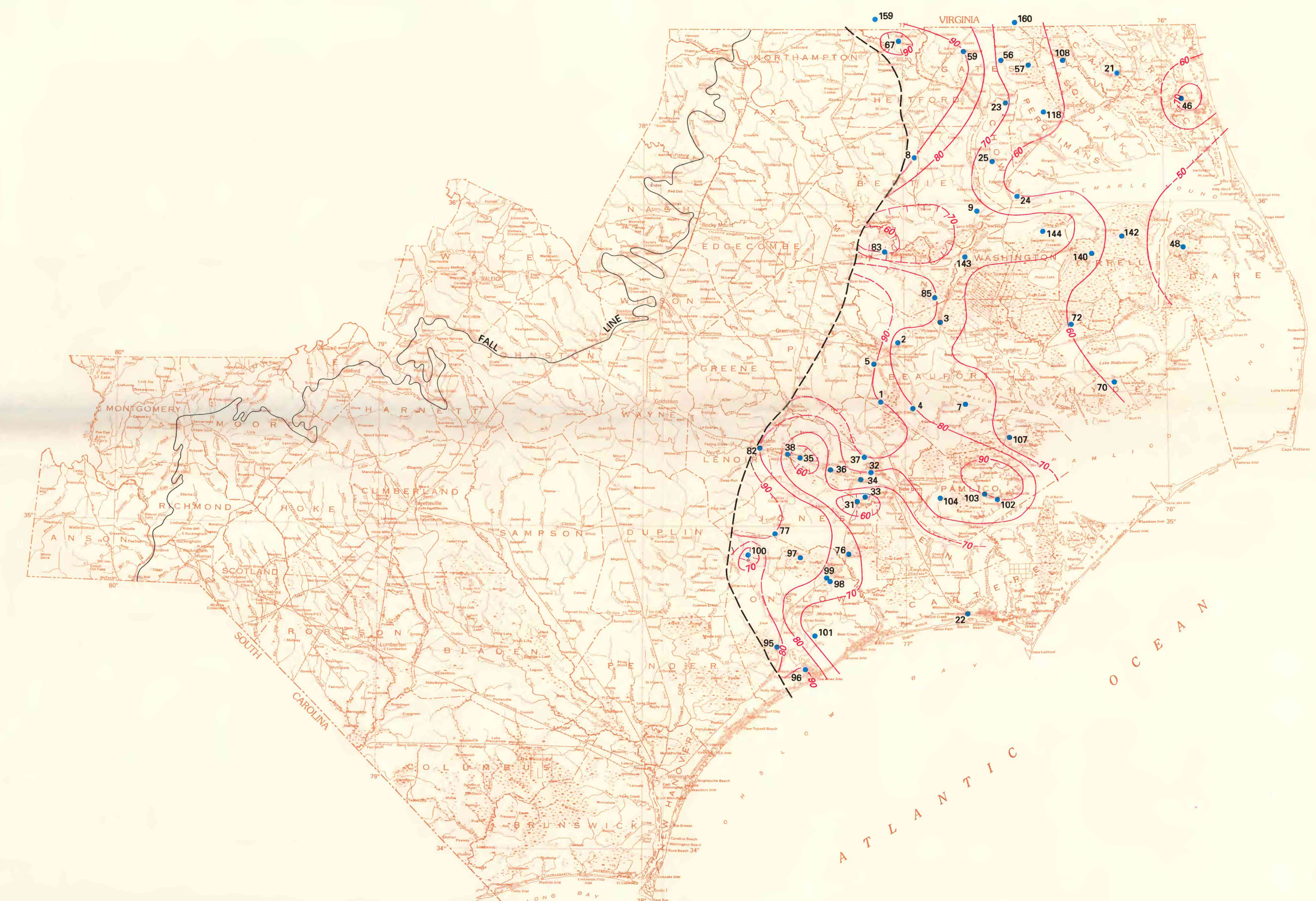


ALTITUDE OF TOP AND CHLORIDE CONCENTRATION OF THE BEAUFORT AQUIFER

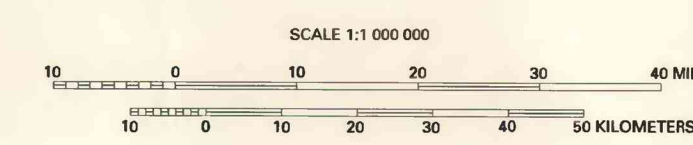


PERCENTAGE OF SAND IN THE BEAUFORT AQUIFER



THICKNESS OF THE BEAUFORT CONFINING UNIT

- EXPLANATION**
- TRANSITION ZONE FROM FRESHWATER TO WATER CONTAINING 250 MILLIGRAMS PER LITER CHLORIDE
  - LIMIT OF AQUIFER
  - 50 SUBSURFACE CONTOUR—Shows altitude of top of Beaufort aquifer. Dashed where approximately located. Contour intervals 50 and 100 feet. Datum is sea level.
  - 2507 LINE OF EQUAL CHLORIDE CONCENTRATION—Shows approximately where water at top of aquifer contains 250 milligrams per liter chloride
  - 2508 LINE OF EQUAL CHLORIDE CONCENTRATION—Shows approximately where water at bottom of aquifer contains 250 milligrams per liter chloride
  - 10,007 LINE OF EQUAL CHLORIDE CONCENTRATION—Shows approximately where water at top of aquifer contains 10,000 milligrams per liter chloride
  - 10,008 LINE OF EQUAL CHLORIDE CONCENTRATION—Shows approximately where water at bottom of aquifer contains 10,000 milligrams per liter chloride
  - 70 LINE OF EQUAL PERCENTAGE OF SAND IN THE BEAUFORT AQUIFER—Dashed where approximately located. Hachures indicate values less than surrounding area. Interval 10 percent
  - LIMIT OF CONFINING UNIT SHOWN AS ZERO THICKNESS
  - 25 LINE OF EQUAL THICKNESS OF THE BEAUFORT CONFINING UNIT—Dashed where approximately located. Hachures indicate values less than surrounding area. Interval 25 feet
  - 0 WELL AND WELL NUMBER



**MAPS SHOWING ALTITUDE OF TOP, CHLORIDE CONCENTRATION, AND PERCENTAGE OF SAND OF THE BEAUFORT AQUIFER AND THICKNESS OF THE BEAUFORT CONFINING UNIT IN THE NORTH CAROLINA COASTAL PLAIN**