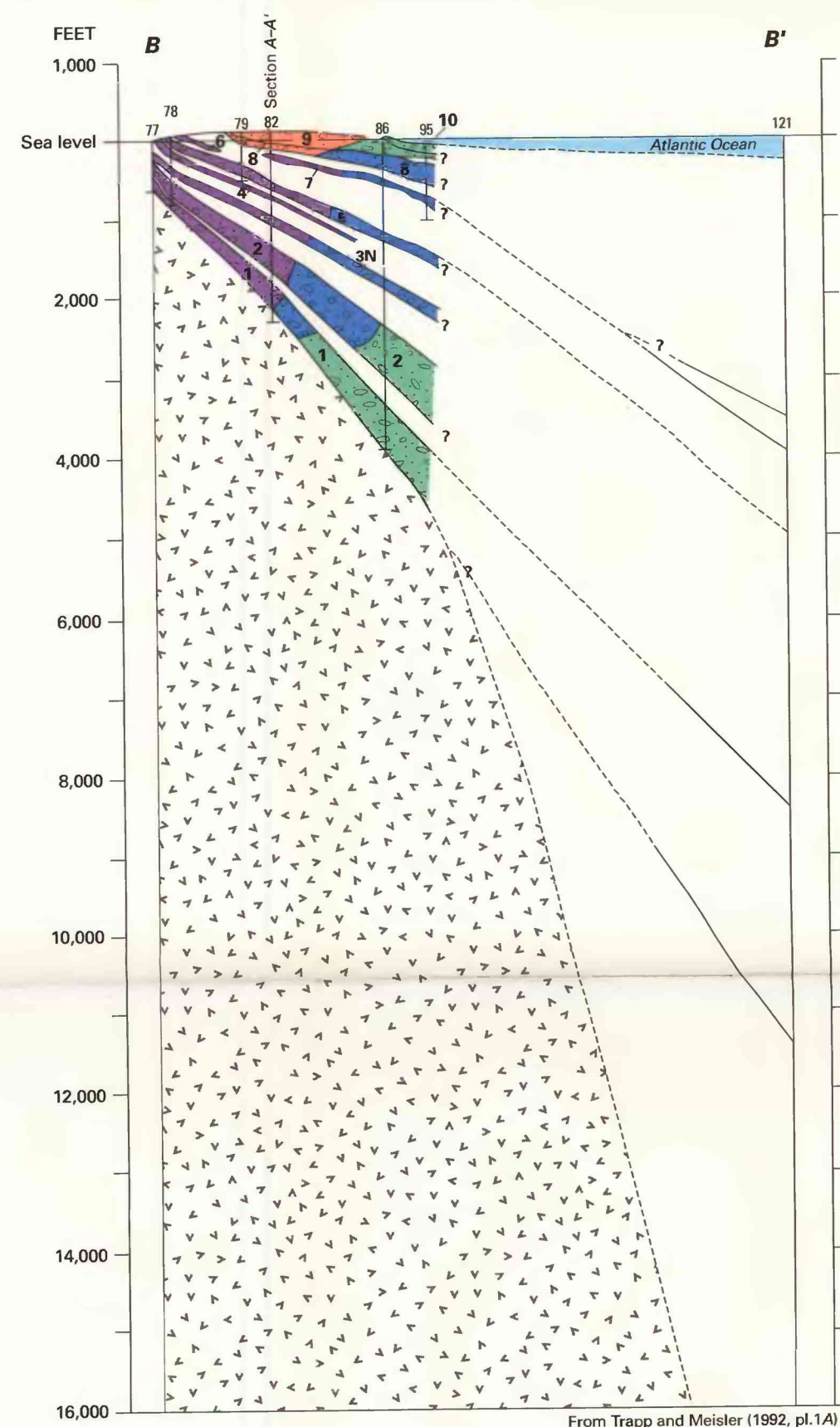




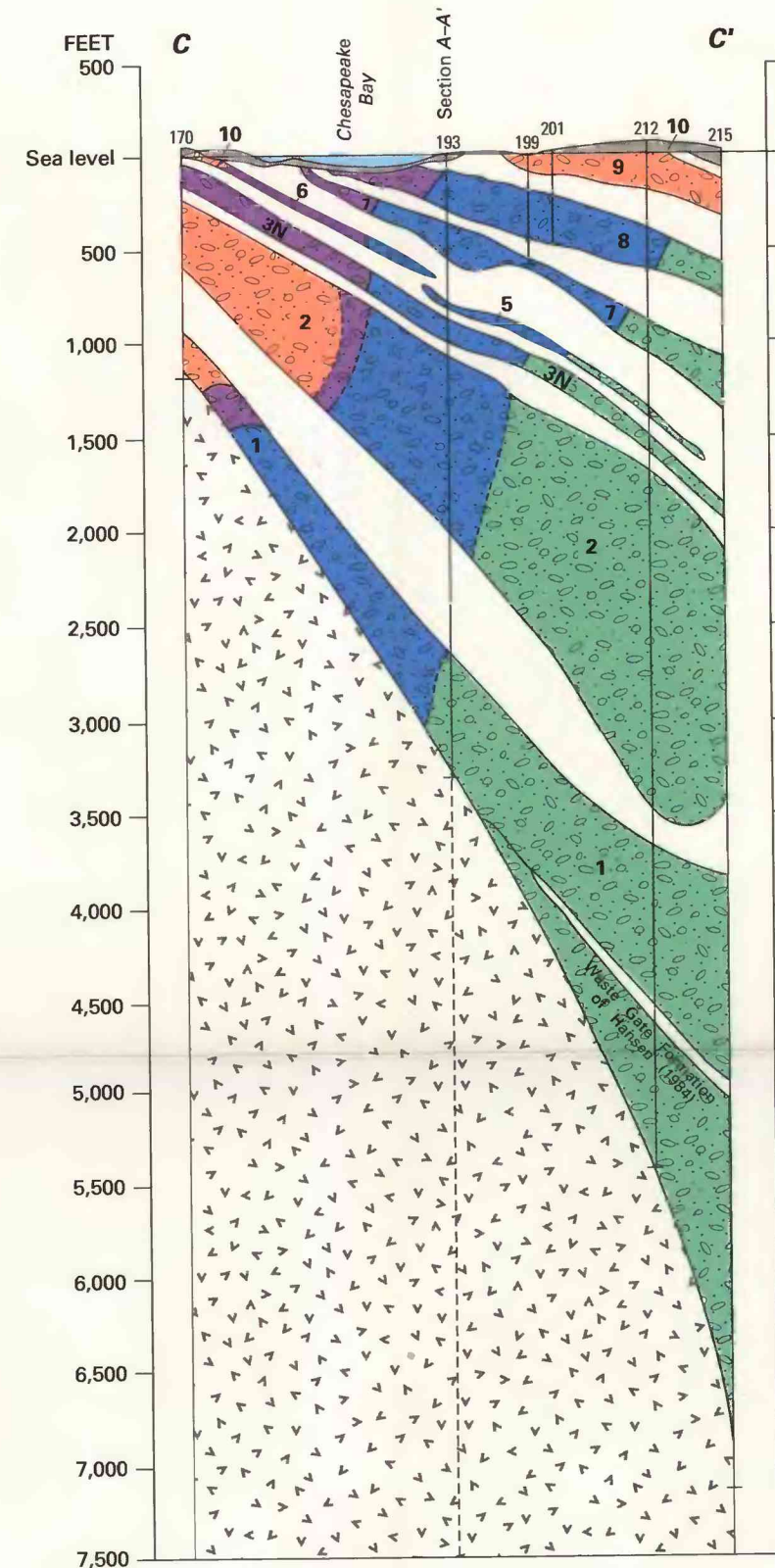
Base modified from U.S. Geological Survey digital data, 1:2,000,000, 1972

From Trapp (1992, pl.1A)

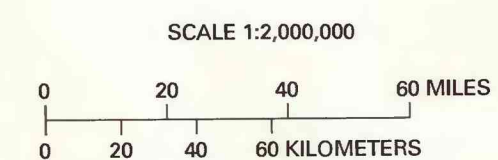
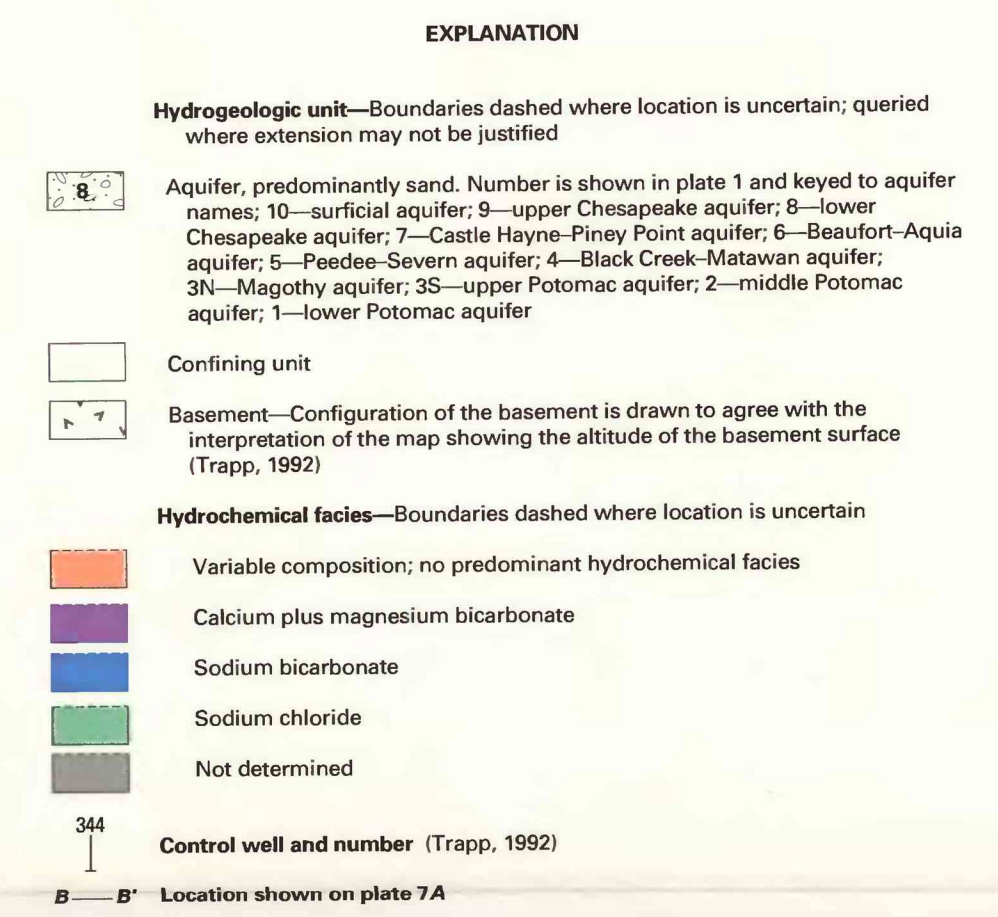
A. Locations of wells and hydrogeologic sections in the northern Atlantic Coastal Plain



B. Hydrogeologic section B-B' showing hydrochemical facies in New Jersey



C. Hydrogeologic section C-C' showing hydrochemical facies in Maryland



VERTICAL SCALE GREATLY EXAGGERATED

HYDROGEOLOGIC SECTIONS IN NEW JERSEY AND MARYLAND AND MAP SHOWING LOCATIONS OF HYDROGEOLOGIC SECTIONS IN THE NORTHERN ATLANTIC COASTAL PLAIN

By
LeRoy L. Knobel, Francis H. Chapelle, and Harold Meisler
1997