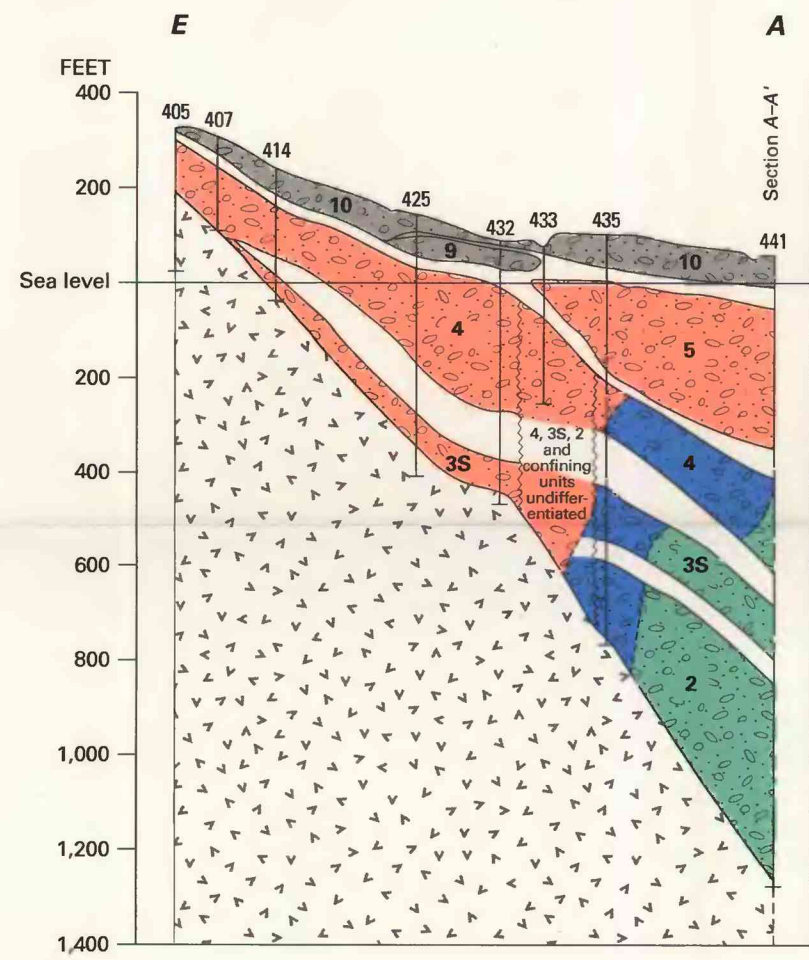
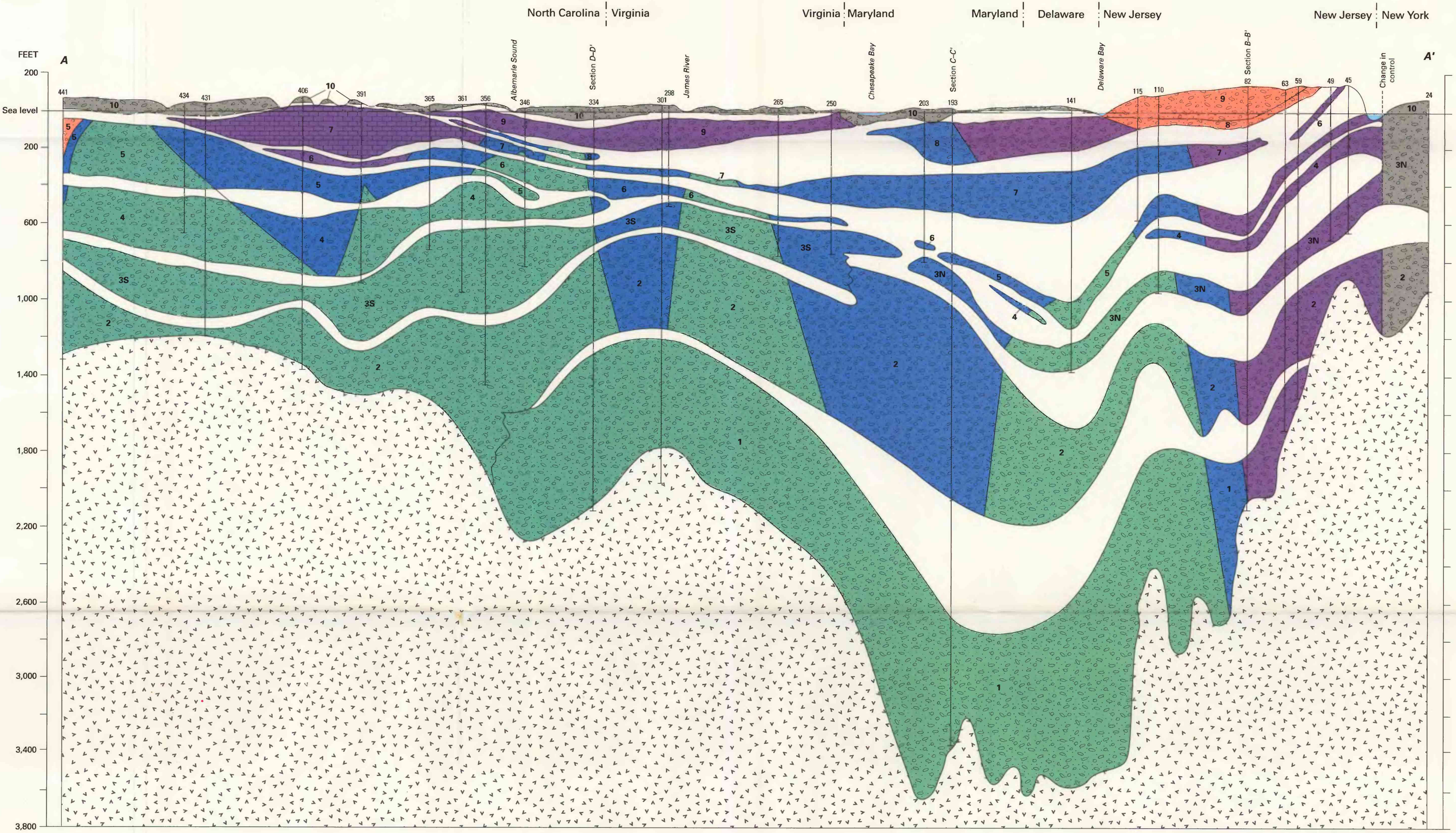
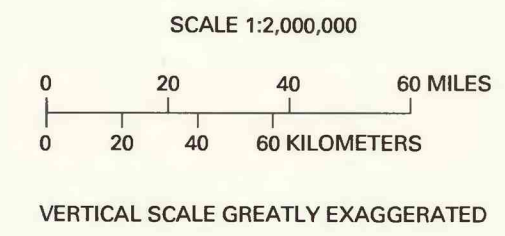


A. Hydrogeologic section D-D' showing hydrochemical facies in northern North Carolina



B. Hydrogeologic section E-A showing hydrochemical facies in southern North Carolina

- EXPLANATION**
- Hydrogeologic unit—Boundaries dashed where location is uncertain
 - 8 Aquifer, predominantly sand. Number is shown in plate 1 and keyed to aquifer names; 10—surficial aquifer; 9—upper Chesapeake aquifer; 8—lower Chesapeake aquifer; 7—Castle Hayne-Piney Point aquifer; 6—Beaufort-Aquia aquifer; 5—Peedee-Severn aquifer; 4—Black Creek-Matawan aquifer; 3N—Magothy aquifer; 3S—upper Potomac aquifer; 2—middle Potomac aquifer; 1—lower Potomac aquifer
 - 7 Aquifer, predominantly limestone and lime sand, layer 7
 - Confining unit
 - Basement—Configuration of the basement is drawn to agree with the interpretation of the map showing the altitude of the basement surface (Trapp, 1992)
 - Hydrochemical facies—Boundaries dashed where location is uncertain
 - Variable composition; no predominant hydrochemical facies
 - Calcium plus magnesium bicarbonate
 - Sodium bicarbonate
 - Sodium chloride
 - Not determined
 - 344 Control well and number (Trapp, 1992)
 - A—A' Location shown on plate 7A



C. Hydrogeologic section A-A' showing hydrochemical facies from North Carolina to New Jersey

HYDROGEOLOGIC SECTIONS IN THE NORTHERN ATLANTIC COASTAL PLAIN (A,B) IN NORTH CAROLINA AND (C) FROM NORTH CAROLINA TO NEW JERSEY

By
LeRoy L. Knobel, Francis H. Chapelle, and Harold Meisler
1997