

EXPLANATION

MAP

- Trace of resistivity profiles—Bends in profiles not shown
- $T-T'$ U.S. Geological Survey, present study
- $V-V'$ U.S. Geological Survey, previous study
- Robinette and Matzner (1980)
- Drill hole—Bottomed in Quaternary basalt
- Drill hole—Penetrated total thickness of Quaternary basalt
- Boundary of Snake River Plain

PROFILES

Electrical resistivity—In ohm-meters

- Less than 70
- 70-149
- 150-300
- Greater than 300

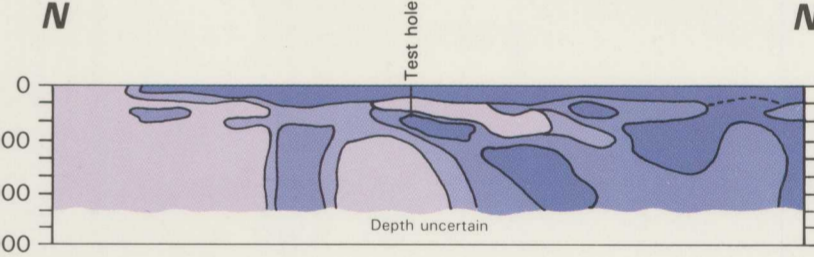
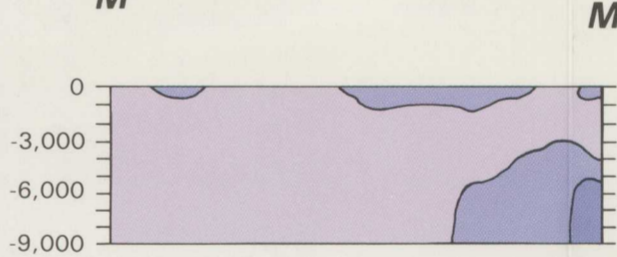
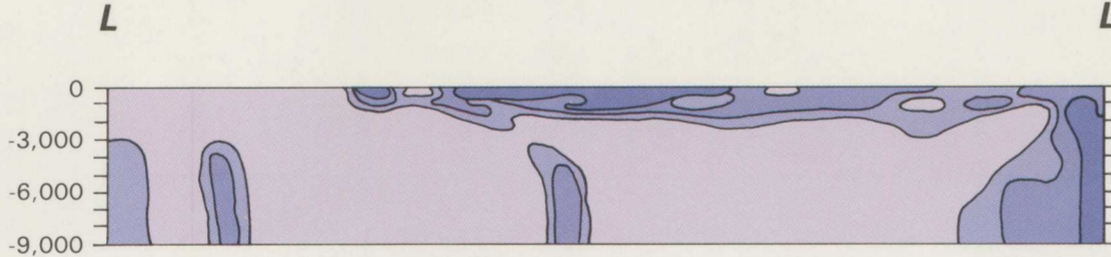
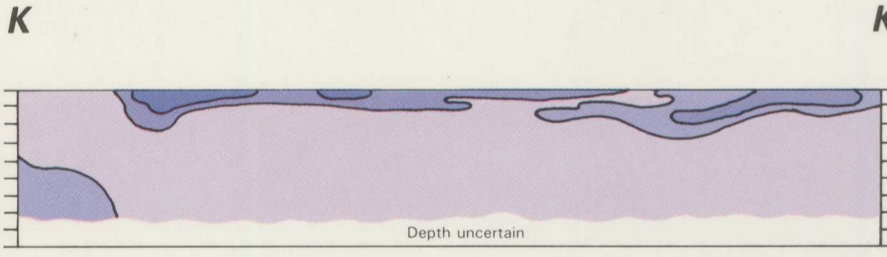
Line of equal resistivity

----- Arbitrary contact for estimating basalt thickness

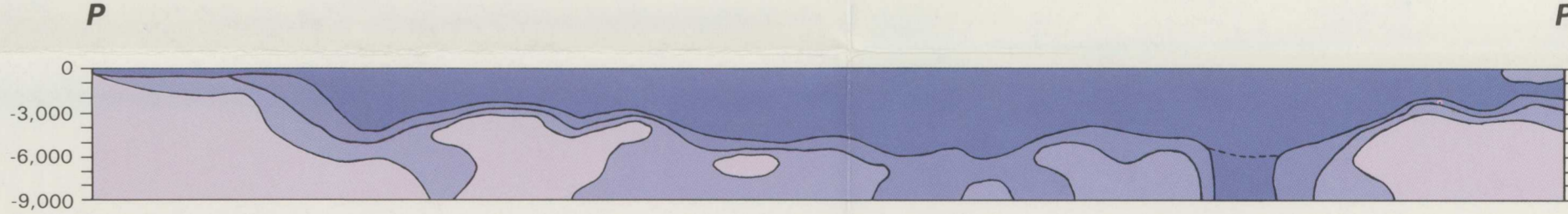
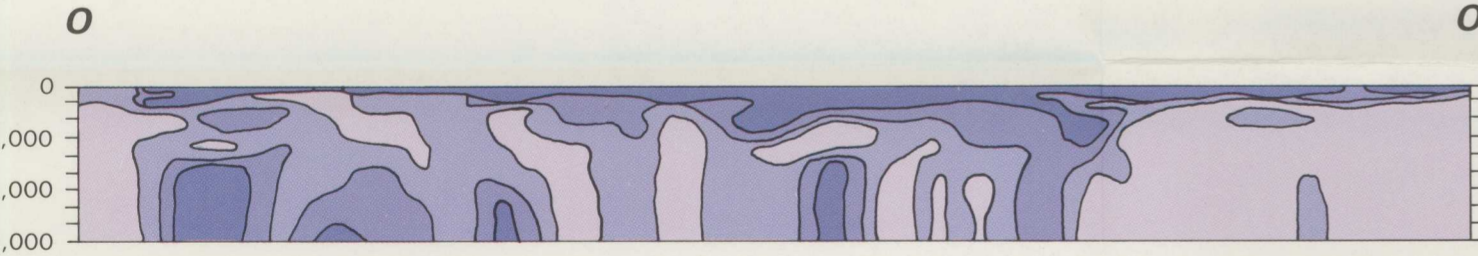
0 3 6 MILES
0 3 6 KILOMETERS

VERTICAL EXAGGERATION $\times 4$

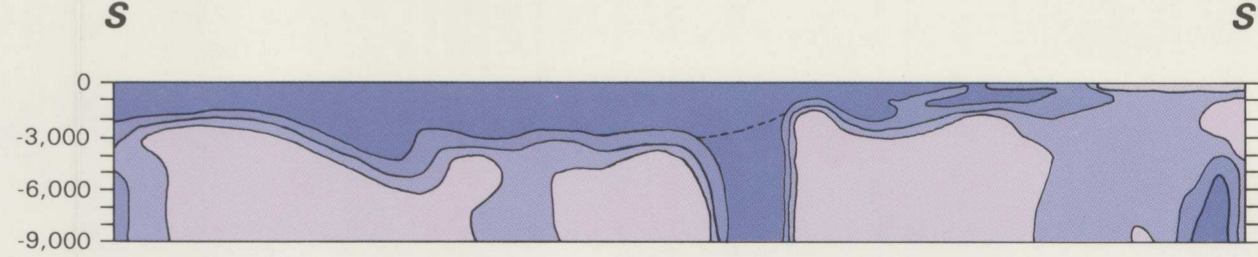
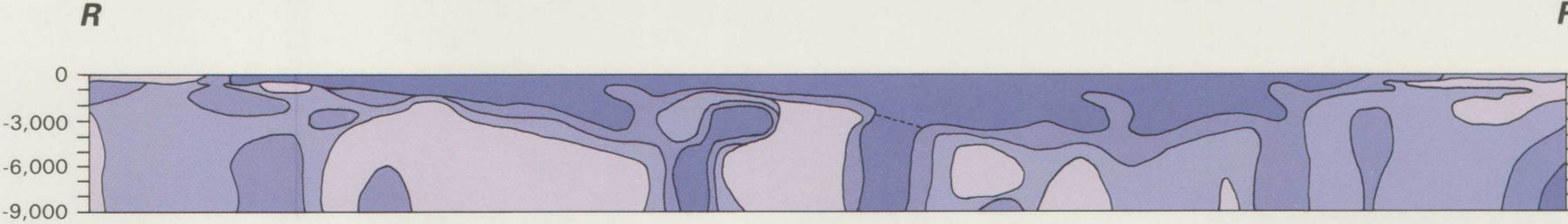
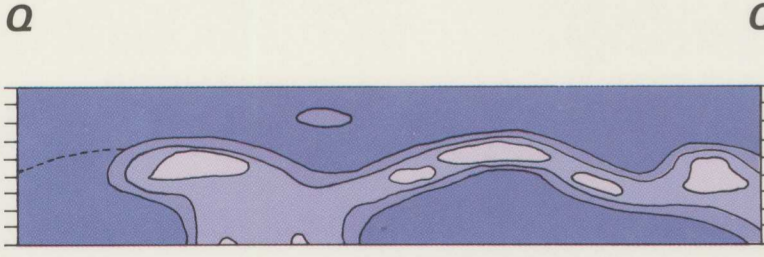
APPROXIMATE DEPTH,
IN FEET BELOW
LAND SURFACE



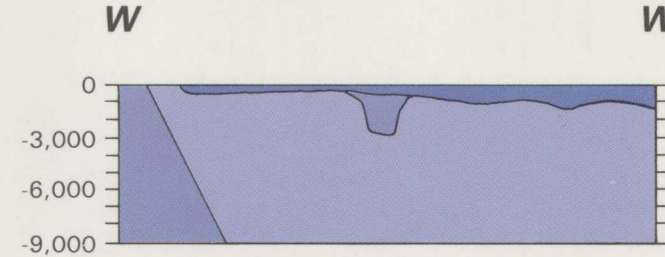
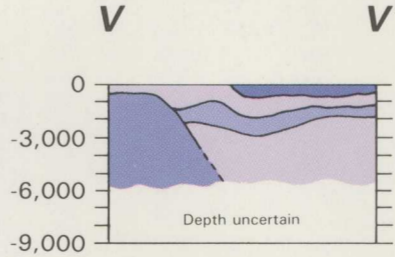
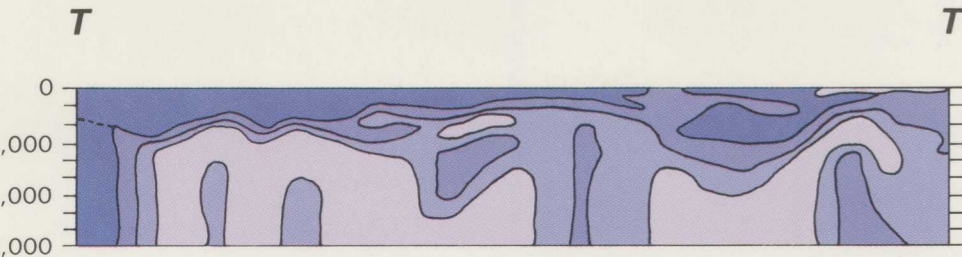
APPROXIMATE DEPTH,
IN FEET BELOW
LAND SURFACE



APPROXIMATE DEPTH,
IN FEET BELOW
LAND SURFACE



APPROXIMATE DEPTH,
IN FEET BELOW
LAND SURFACE



Electrical resistivity data from
R.J. Bisdorf (U.S. Geological
Survey, written commun., 1983)

MAP SHOWING ELECTRICAL RESISTIVITY PROFILES K-K' THROUGH W-W', SNAKE RIVER PLAIN, IDAHO AND EASTERN OREGON