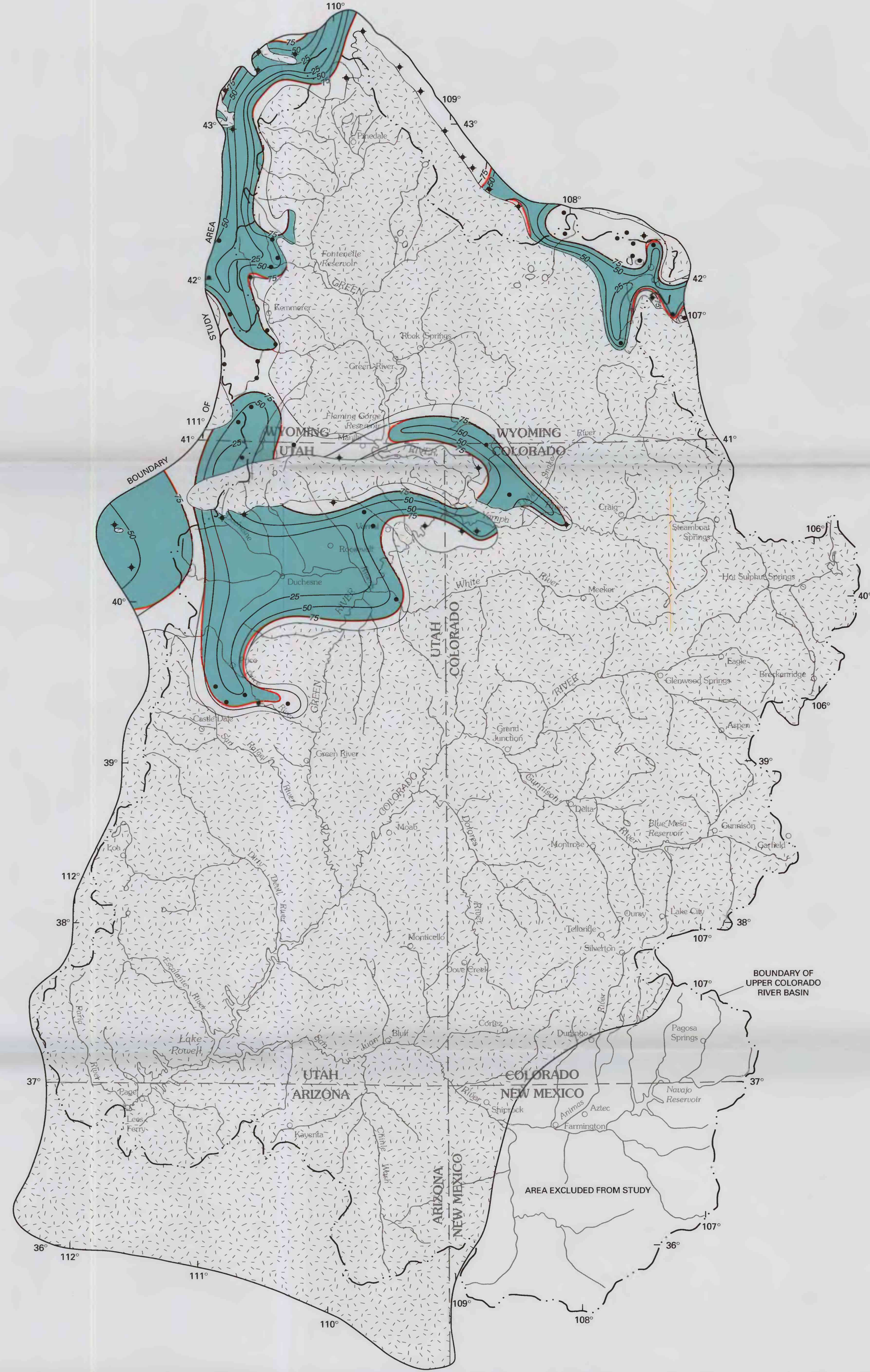


1:2,000,000  
 0 25 50 75 100 MILES  
 0 25 50 75 100 KILOMETERS  
 STRATIGRAPHIC NOMENCLATURE AND THICKNESS



1:2,000,000  
 0 25 50 75 100 MILES  
 0 25 50 75 100 KILOMETERS  
 LITHOLOGY

**EXPLANATION**

- Area where Darwin-Humbug zone is missing because of erosion or nondeposition or thrust under Precambrian rocks
- Borehole with lithologic log used to prepare map
- Measured surface stratigraphic section used to prepare map

**Stratigraphic Nomenclature and Thickness**

- Area where Darwin-Humbug zone crops out (generalized)
- Line of equal thickness—Interval is 100 feet
- Approximate boundary between component geologic units

**Lithology**

- Sandstone and shale with less than 25 percent limestone and dolomite interbeds
- Sandstone, shale, limestone, and dolomite; carbonate rocks commonly are brecciated. Anhydrite or gypsum present locally
- Line of equal percent sandstone—Location generally is approximate because of sparse control. Interval is 25 percent
- Approximate boundary between lithofacies

**STRATIGRAPHIC NOMENCLATURE, THICKNESS, AND LITHOLOGY OF THE DARWIN-HUMBUG ZONE OF THE MADISON AQUIFER IN THE UPPER COLORADO RIVER BASIN AND VICINITY IN ARIZONA, COLORADO, NEW MEXICO, UTAH, AND WYOMING**

By  
 Arthur L. Geldon  
 2002

Base from U.S. Geological Survey  
 U.S. base map, 1:2,500,000