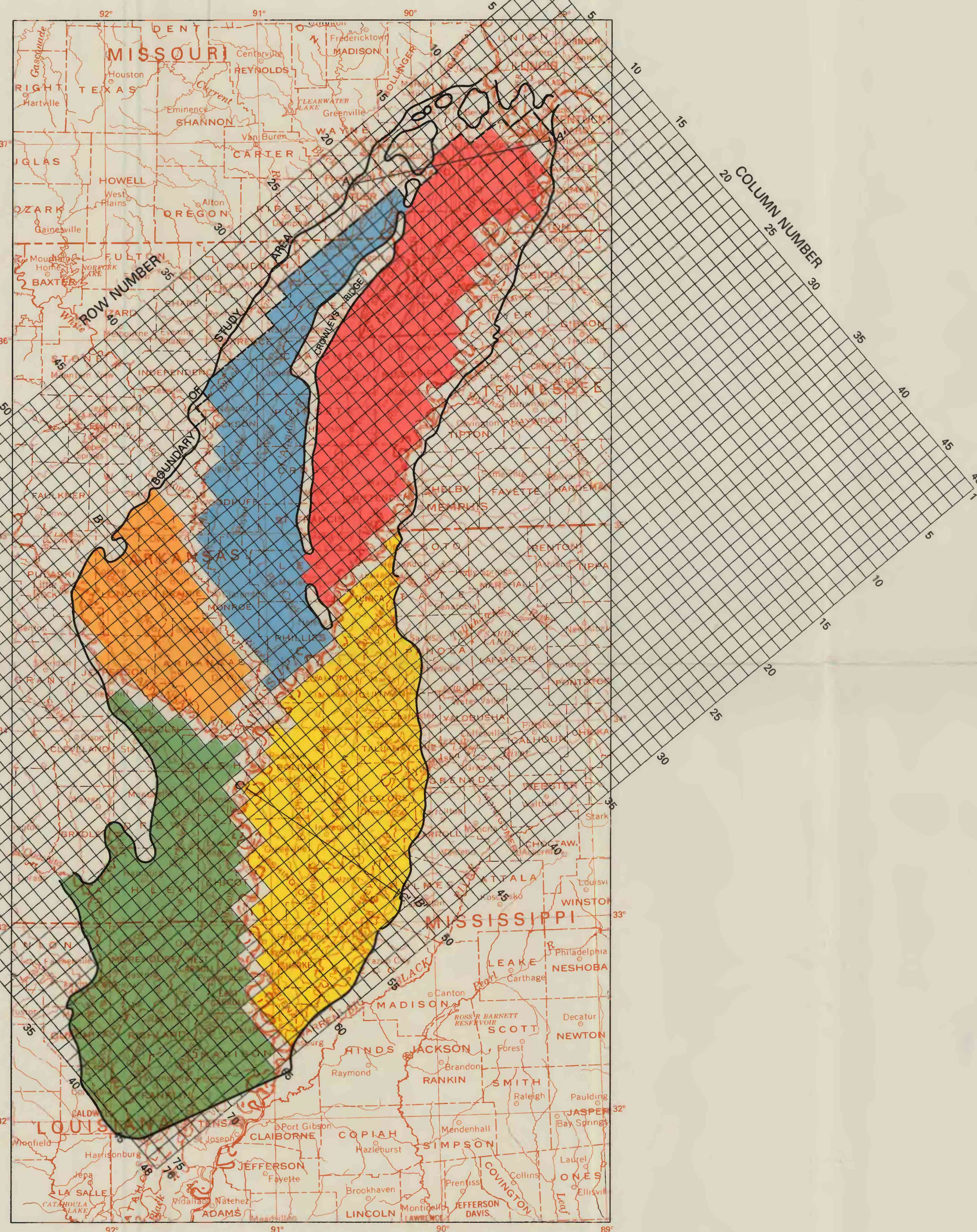
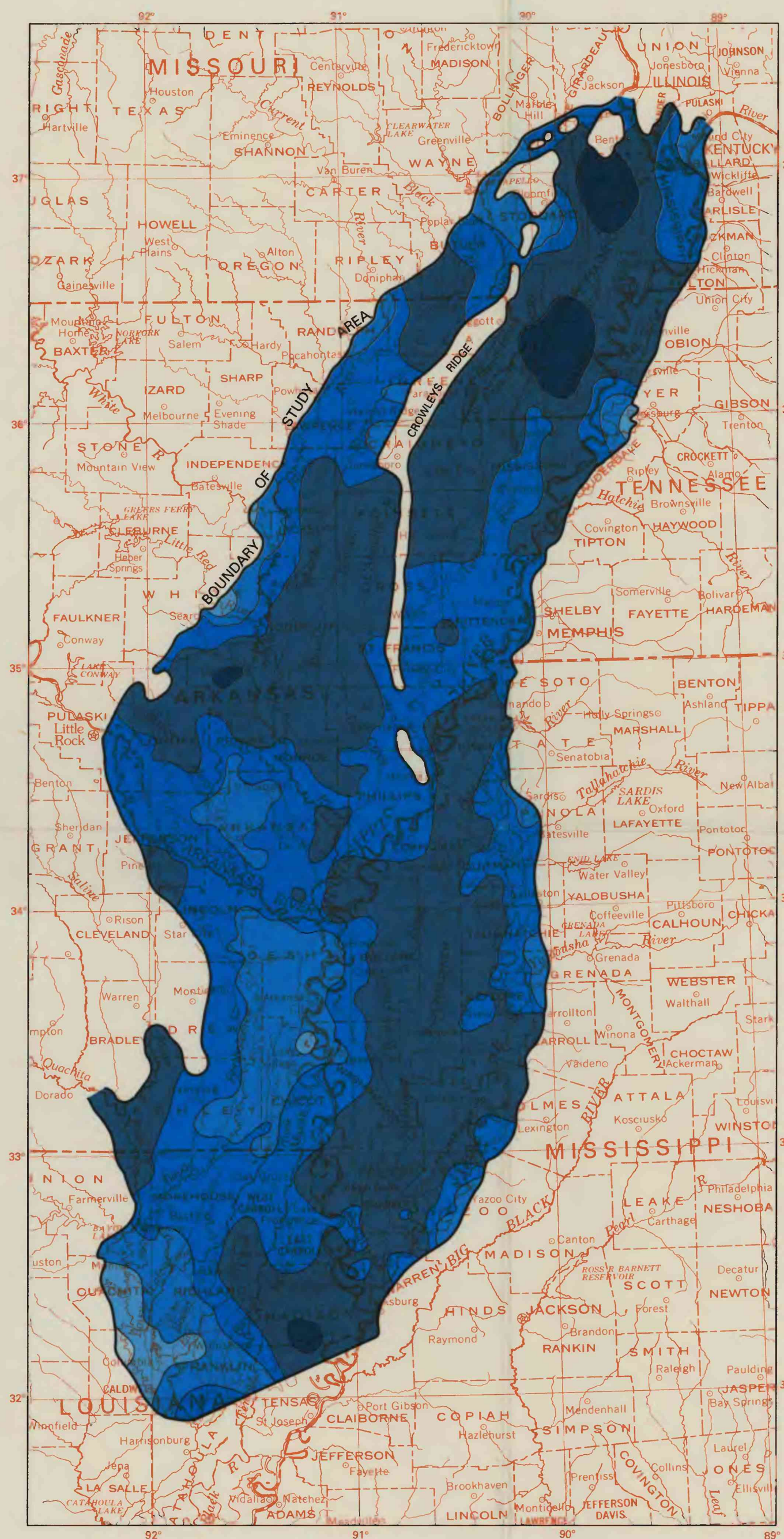


- EXPLANATION**  
**STUDY AREAS**
- Grand Prairie
  - Cache
  - Delta
  - Boeuf
  - St. Francis
  - River blocks not included in areas
- EASTERN EDGE OF THE SUBCROP OF THE McNEARY-NACATOCH AQUIFER
- A—A' TRACE OF SECTION—Sections shown in figures 3, 4, and 6

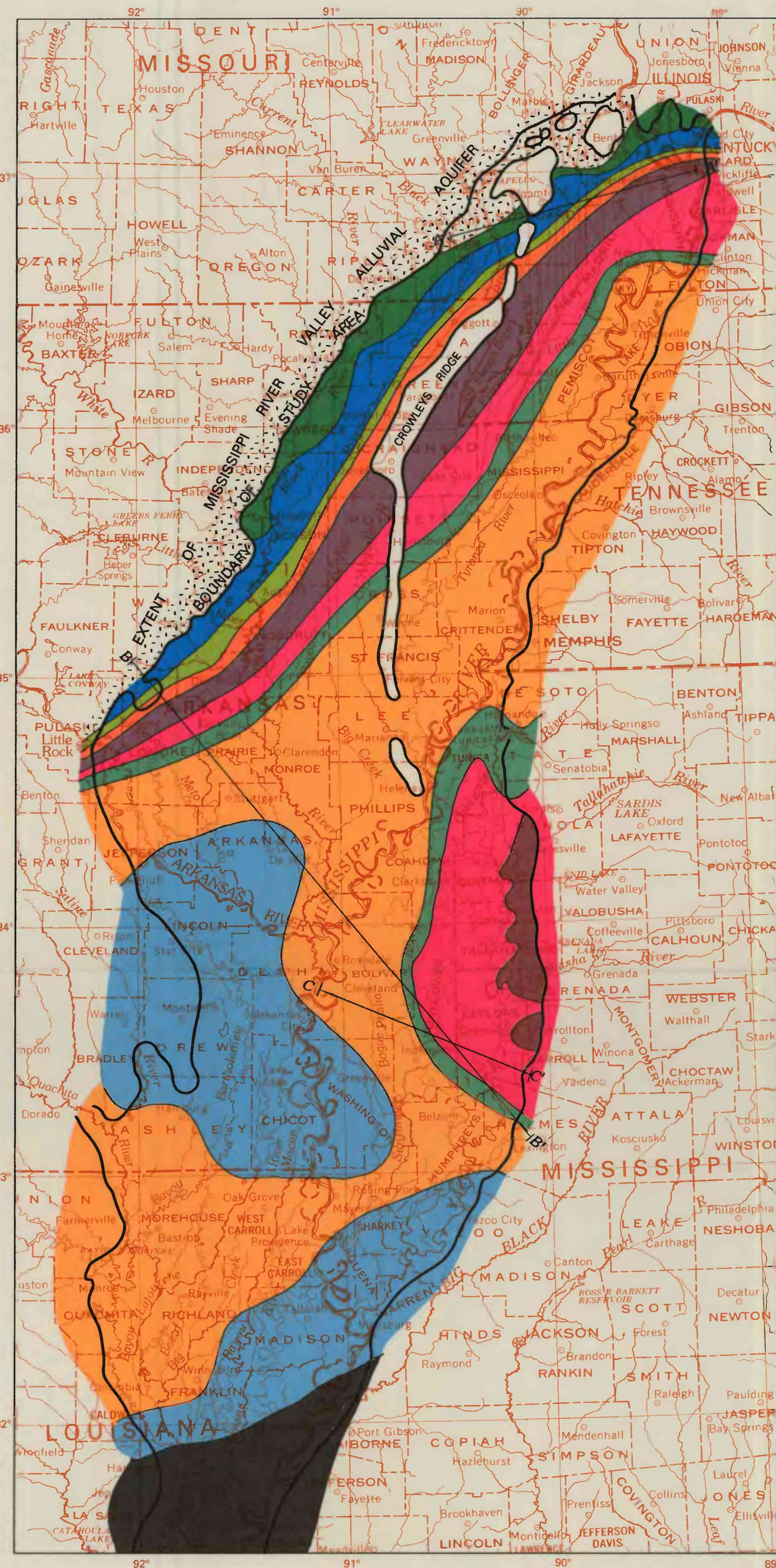


LOCATION OF STUDY AREA, AREAL SUBDIVISIONS, LINES OF SECTIONS, AND MODEL GRID

- EXPLANATION**  
**THICKNESS OF AQUIFER, IN FEET**
- Less than 25
  - 25 to 50
  - 50 to 75
  - 75 to 100
  - 100 to 150
  - Greater than 150



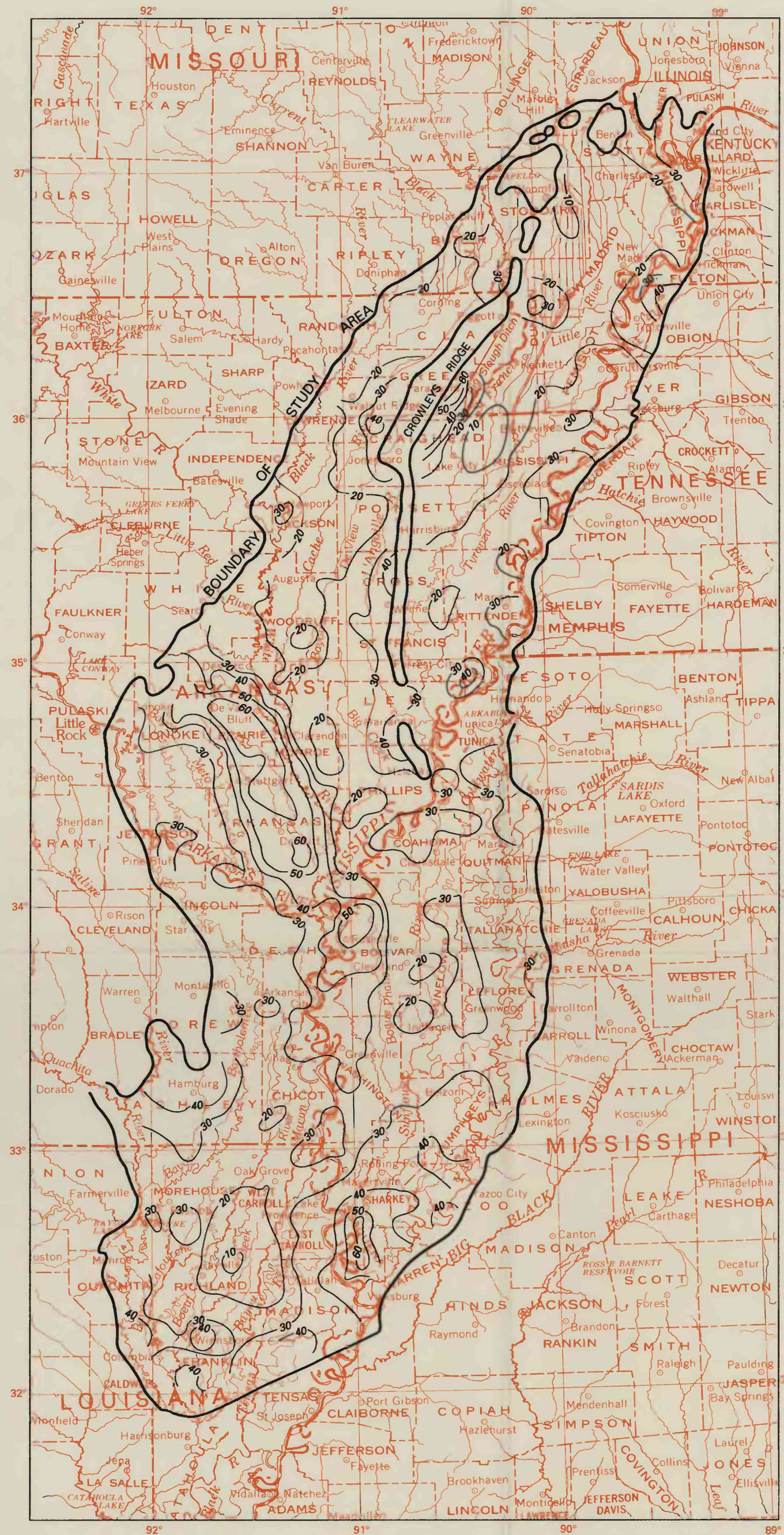
THICKNESS OF THE MISSISSIPPI RIVER VALLEY ALLUVIAL AQUIFER



HYDROGEOLOGIC UNITS ADJACENT TO AND SUBCROPPING BELOW THE AQUIFER

- EXPLANATION**
- COASTAL LOWLANDS AQUIFER SYSTEM  
Permeable zone E (lower Miocene-upper Oligocene deposits)
  - MISSISSIPPI EMBAYMENT AQUIFER SYSTEM  
Vicksburg-Jackson confining unit
  - Upper Claiborne aquifer
  - Middle Claiborne confining unit
  - Middle Claiborne aquifer
  - Lower Claiborne confining unit
  - Lower Claiborne-upper Wilcox aquifer
  - Middle Wilcox aquifer
  - Lower Wilcox aquifer
  - Midway confining unit
  - McNeary-Nacatoch aquifer
  - Paleozoic rocks, undifferentiated
- A—A' TRACE OF SECTION—Sections shown in figures 3, 4, and 6
- SUBCROP BOUNDARY
- OUTCROP BOUNDARY

- EXPLANATION**  
**LINE OF EQUAL THICKNESS OF THE MISSISSIPPI RIVER VALLEY CONFINING UNIT—Interval 10 feet**



THICKNESS OF THE MISSISSIPPI RIVER VALLEY CONFINING UNIT

