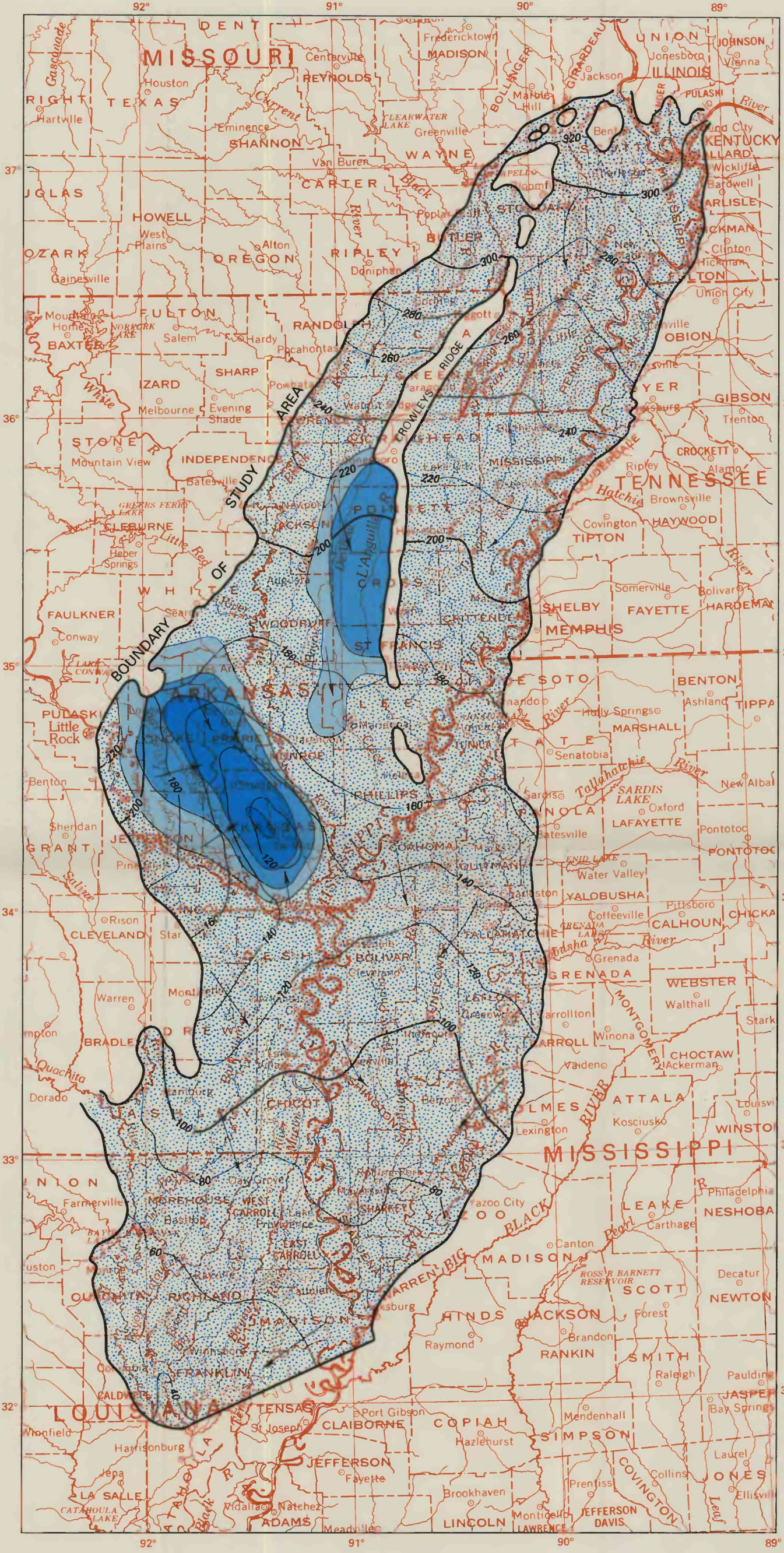


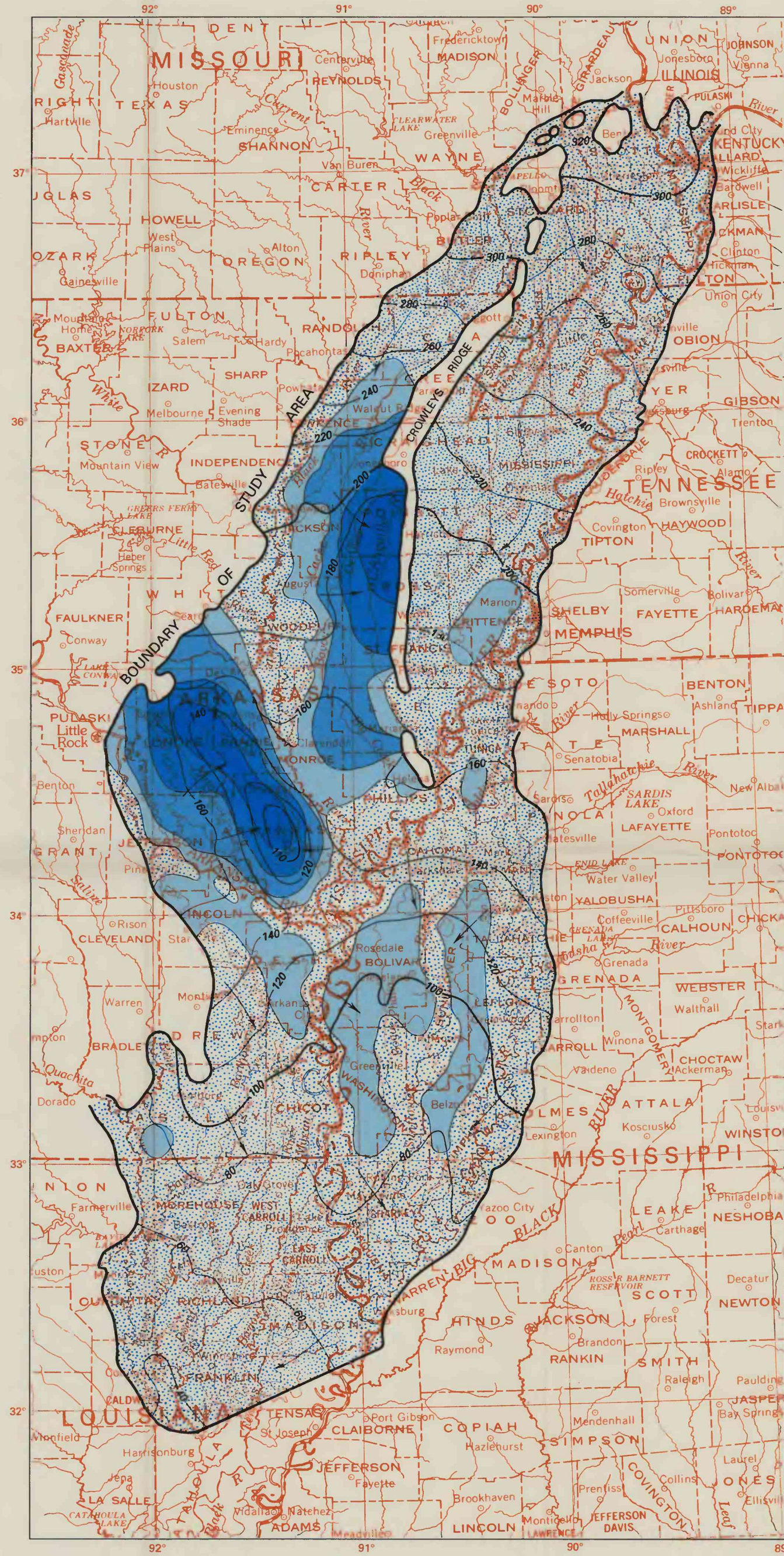
1942

EXPLANATION
DRAWDOWN—Predevelopment to 1942, in feet
 Less than 10
 10 to 20
 20 to 40
 40 to 56
 —220— POTENTIOMETRIC CONTOUR—Shows altitude of 1942 potentiometric surface. Contour interval 20 feet with supplemental contour at 130 feet. Datum is sea level
 ← GENERALIZED DIRECTION OF GROUND-WATER FLOW



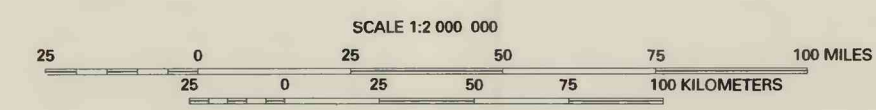
1962

EXPLANATION
DRAWDOWN—Predevelopment to 1962, in feet
 Less than 10
 10 to 20
 20 to 40
 40 to 60
 60 to 64
 —220— POTENTIOMETRIC CONTOUR—Shows altitude of 1962 potentiometric surface. Contour interval 20 feet. Datum is sea level
 ← GENERALIZED DIRECTION OF GROUND-WATER FLOW



1982

EXPLANATION
DRAWDOWN—Predevelopment to 1982, in feet
 Less than 10
 10 to 20
 20 to 40
 40 to 60
 60 to 86
 —220— POTENTIOMETRIC CONTOUR—Shows altitude of 1982 potentiometric surface. Contour interval 20 feet with supplemental contour at 110 feet. Datum is sea level
 ← GENERALIZED DIRECTION OF GROUND-WATER FLOW



Base from U.S. Geological Survey, United States, 1972, 1:2,500,000

MAPS SHOWING SIMULATED POTENTIOMETRIC SURFACE AND DRAWDOWN FROM PREDEVELOPMENT CONDITIONS, MISSISSIPPI RIVER VALLEY ALLUVIAL AQUIFER, 1942, 1962, AND 1982