

**EXPLANATION**

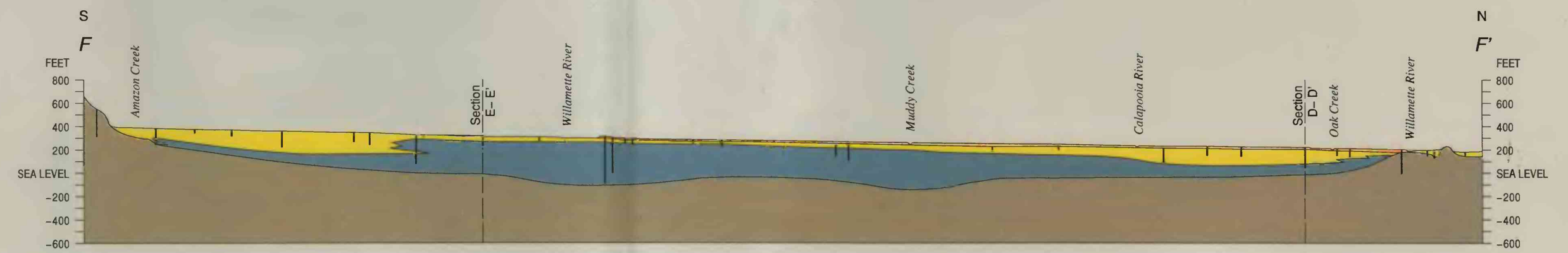
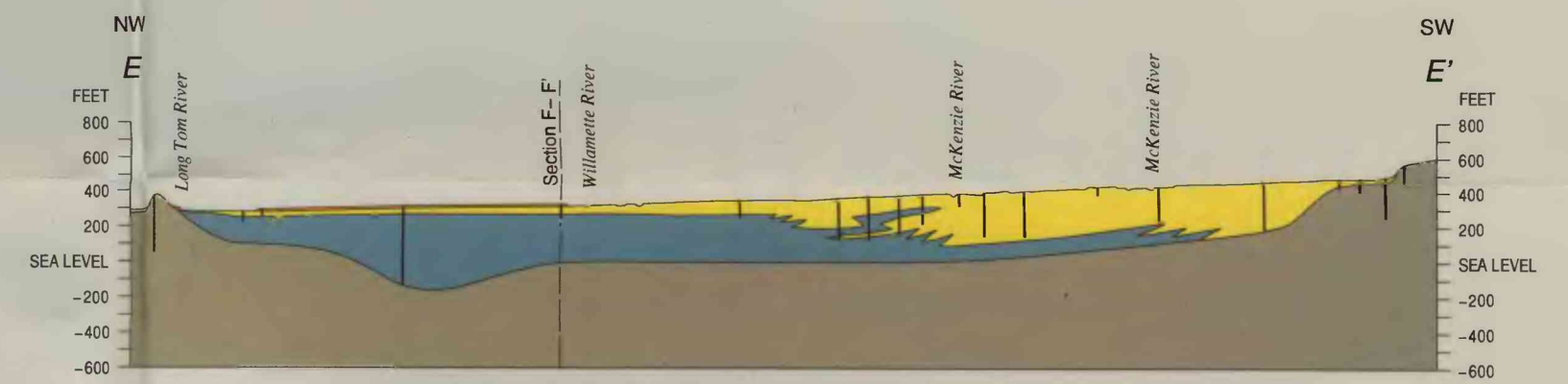
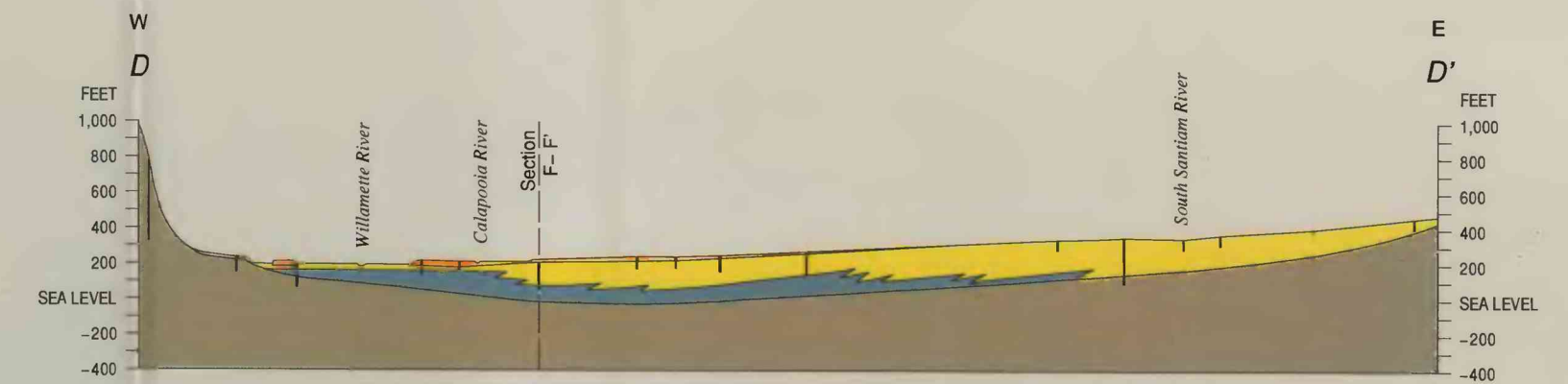
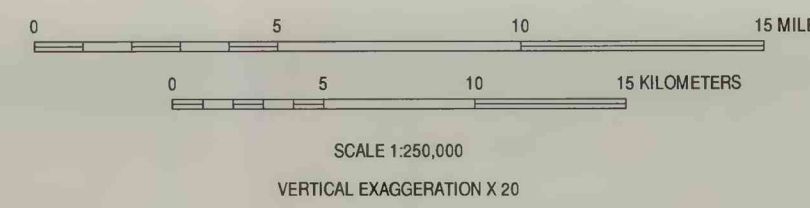
- Willamette Silt unit**—May locally include fine-grained Holocene alluvium
- Willamette aquifer**—Locally includes coarse-grained Holocene alluvium
- Willamette confining unit**—Where the Willamette confining unit is thin and directly overlies the basement confining unit, it is difficult to distinguish the two units and the Willamette confining unit is not shown in section.
- Columbia River basalt aquifer**—The upper contact in the subsurface is partly constrained by seismic data, see Plate 2.
- Basement confining unit**—May locally include overlying, thin Holocene alluvium. May locally include Willamette confining unit where it is thin and directly overlies the basement confining unit.

--- **Contact or facies boundary**—Approximately located, dashed where inferred

⊥ **Well**—Bends in sections correspond to well locations.

Section A-A' **Intersection of two sections**

Note: Trace of hydrogeologic sections is shown on Plate 1.



**HYDROGEOLOGIC SECTIONS THROUGH THE WILLAMETTE LOWLAND**

By  
Marshall W. Gannett and Rodney R. Caldwell  
1998