

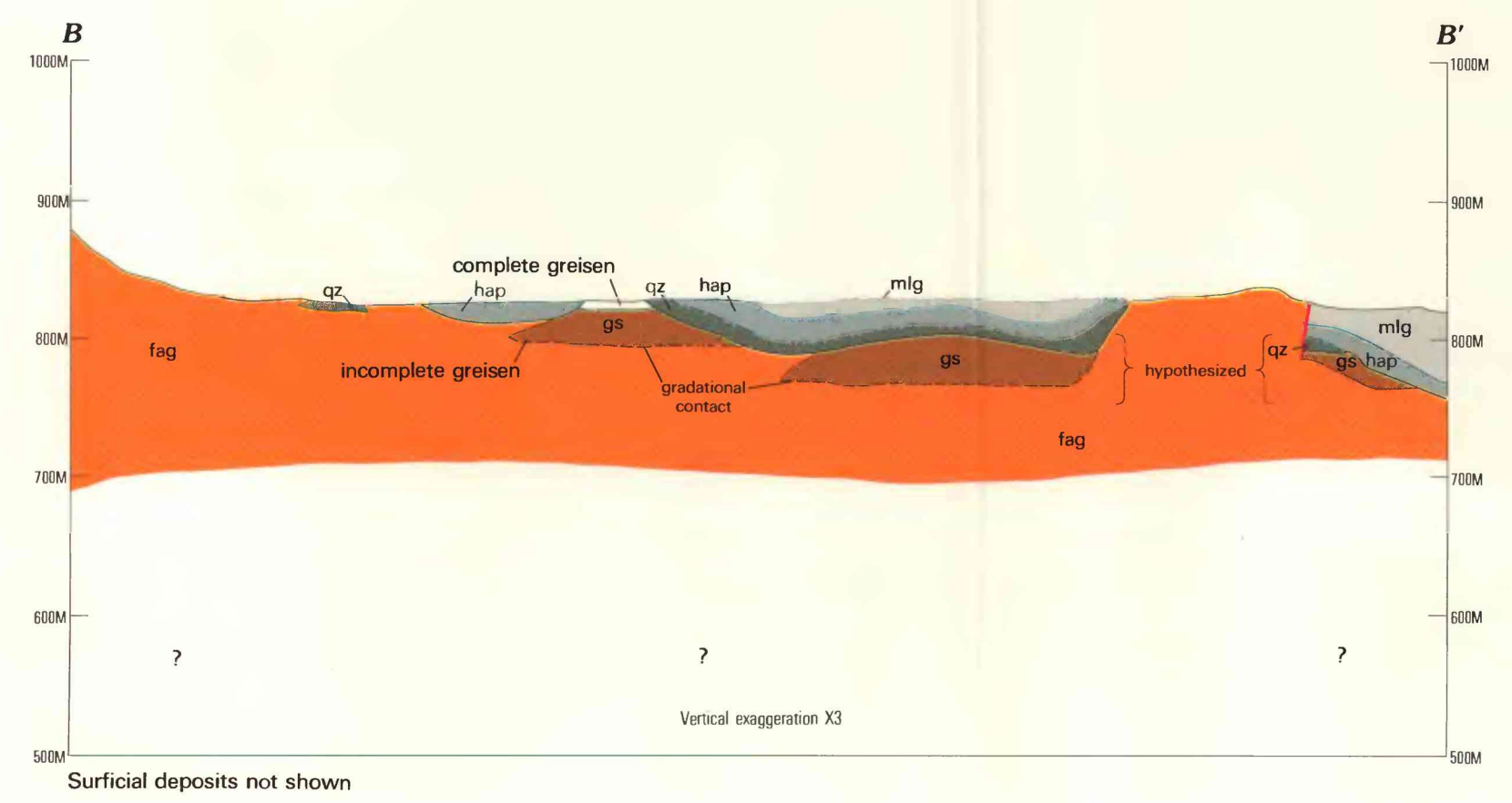
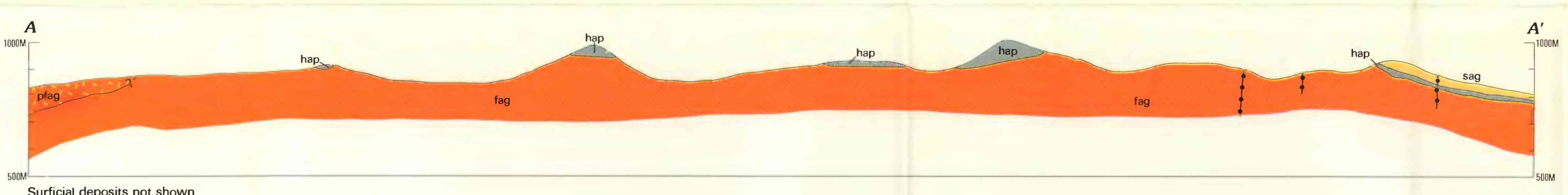
EXPLANATION

- Qs Surficial deposits
- Unconformity
- Quartz vein
- gs Greisen
- fag Fawwarah alkali-feldspar granite
- qz Pegmatite quartz
- hap Hadhir aplite
- pfag Proto-Fawwarah alkali-feldspar granite
- sag Silsilah alkali granite—com, comendite; com comendite dike
- mlg Maraghan lithic graywacke
- Contact
- Sample locality site

Showing number—All sample numbers should be prefixed by 181, unless otherwise indicated to obtain complete designation

QUATERNARY
PRECAMBRIAN

Felsic dikes



GEOLOGIC MAP OF THE SOUTHWEST PART OF THE SILSILAH RING COMPLEX, KINGDOM OF SAUDI ARABIA