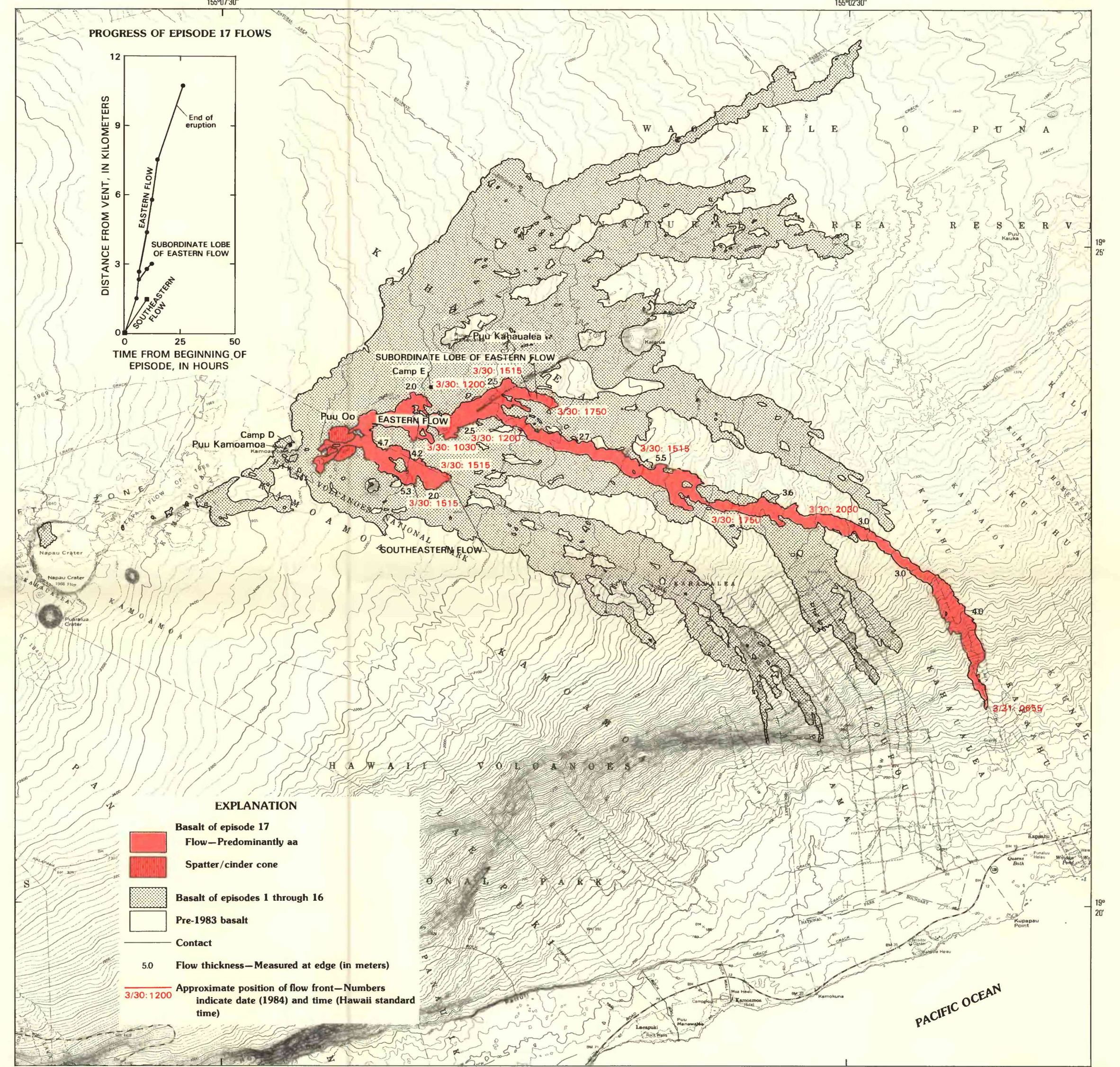
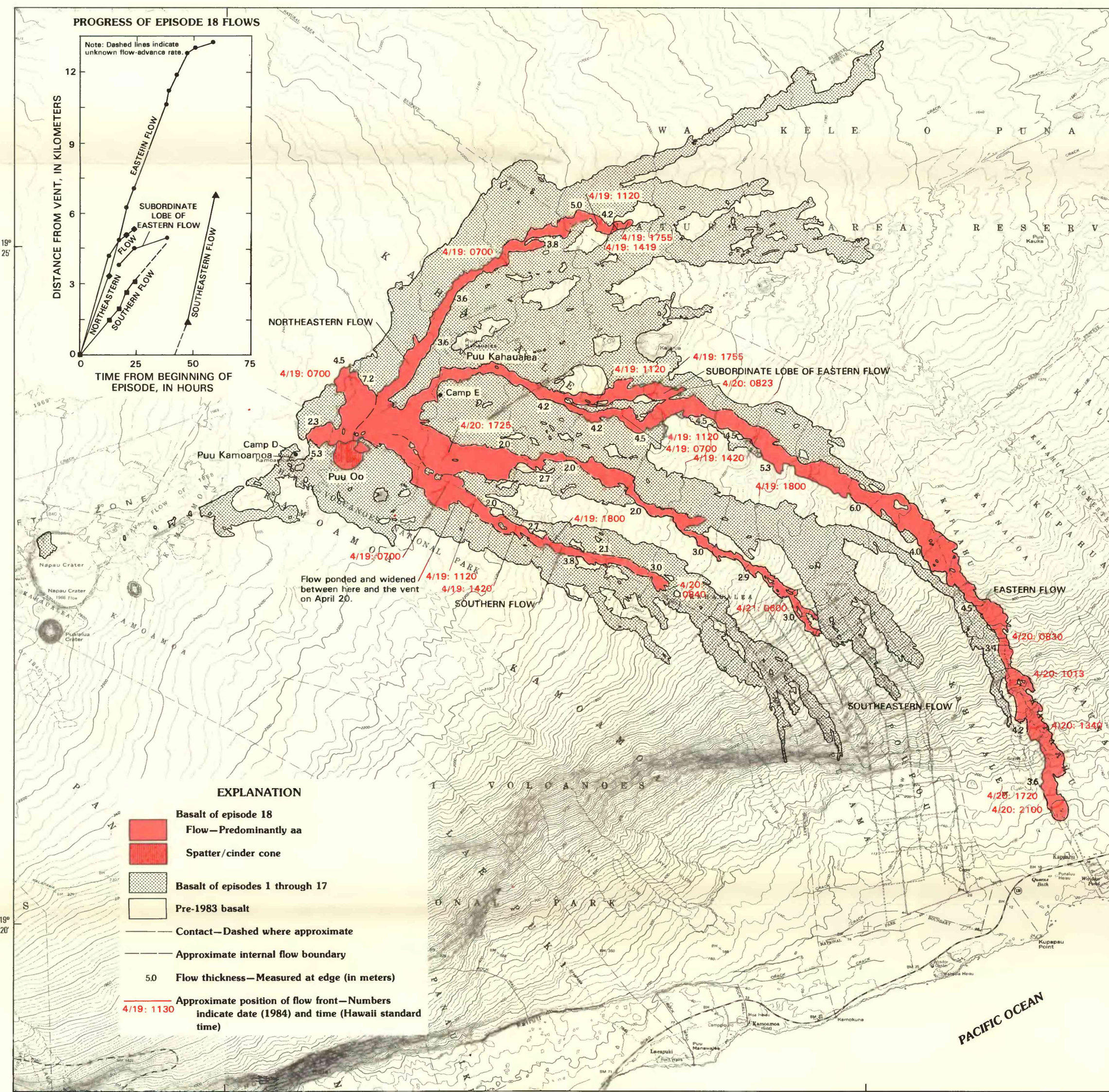


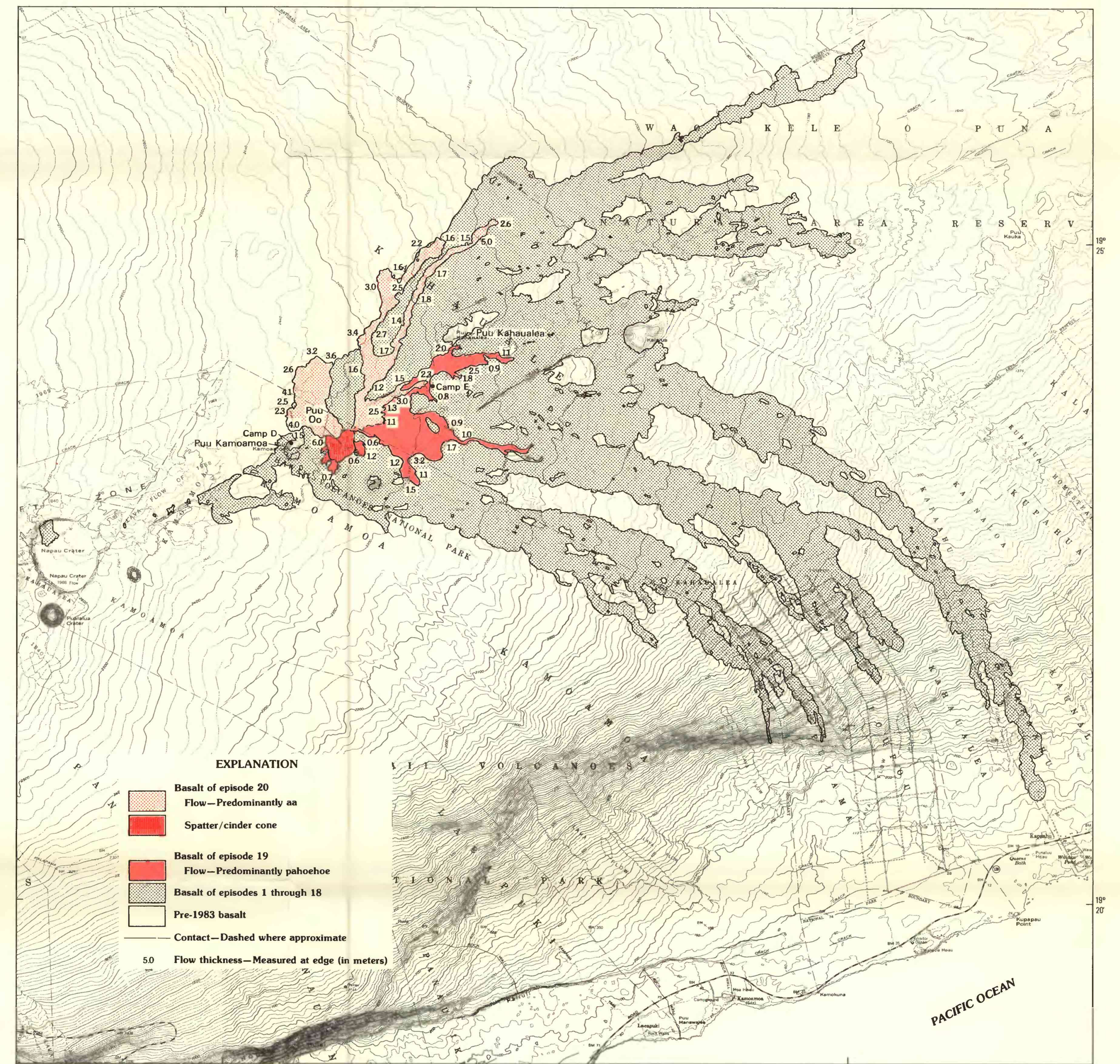
EPISODE 16



EPISODE 17

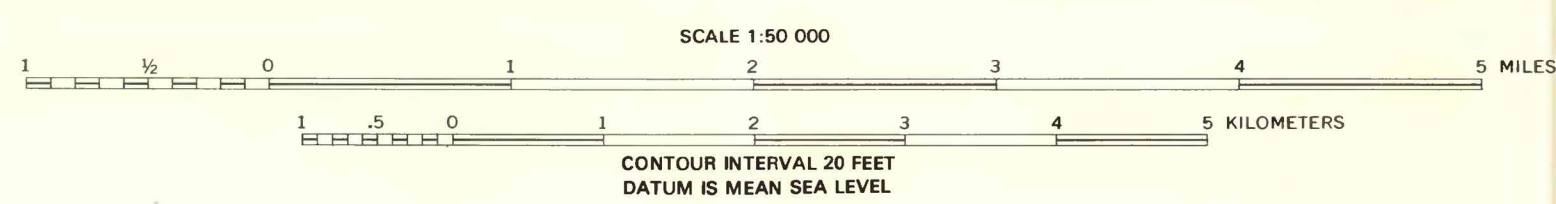


EPISODE 18



EPISODES 19 AND 20

Base from U.S. Geological Survey 1:24,000
Kilauea, Mokuapihi Crater, Volcano, 1981;
Kilauea, 1982



DISTRIBUTION OF FLOWS AND VENT DEPOSITS, MEASURED FLOW THICKNESSES, AND FLOW PROGRESS FOR EPISODES 16 THROUGH 20 OF THE PUU OO ERUPTION