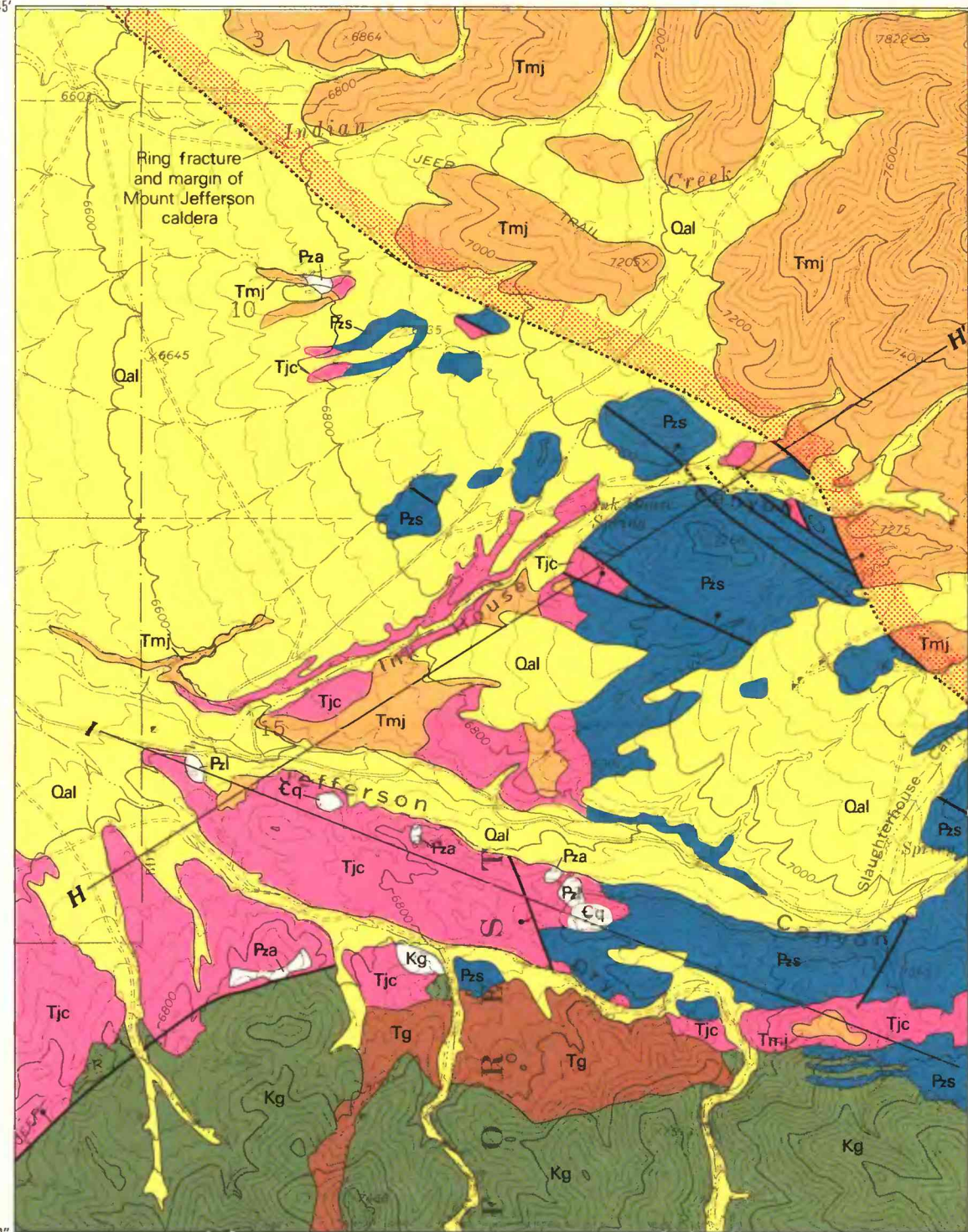
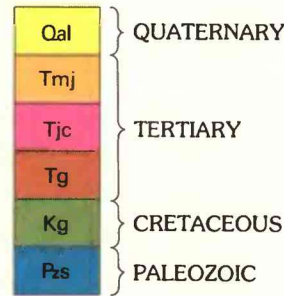


117°02'30"
36°45'



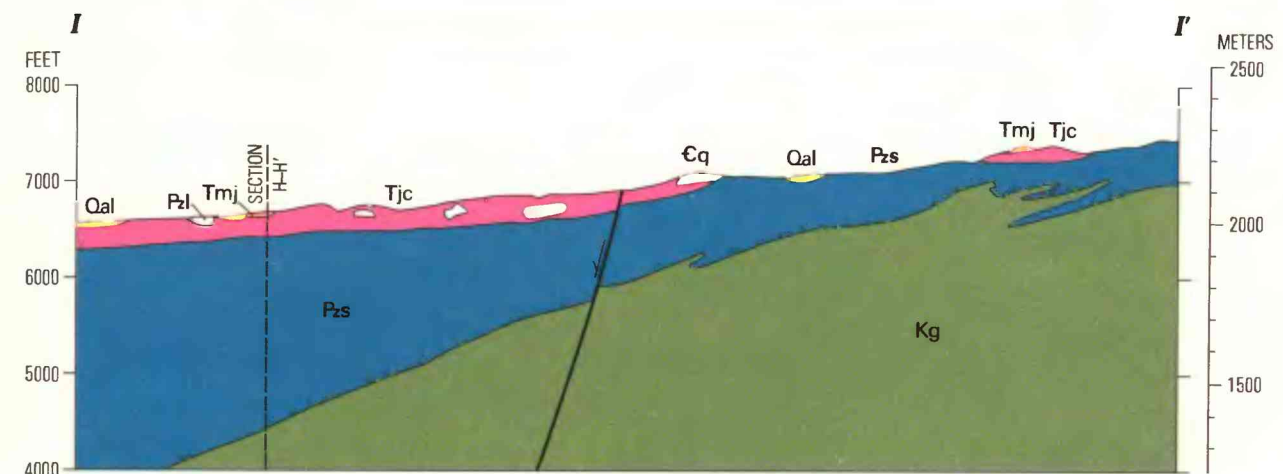
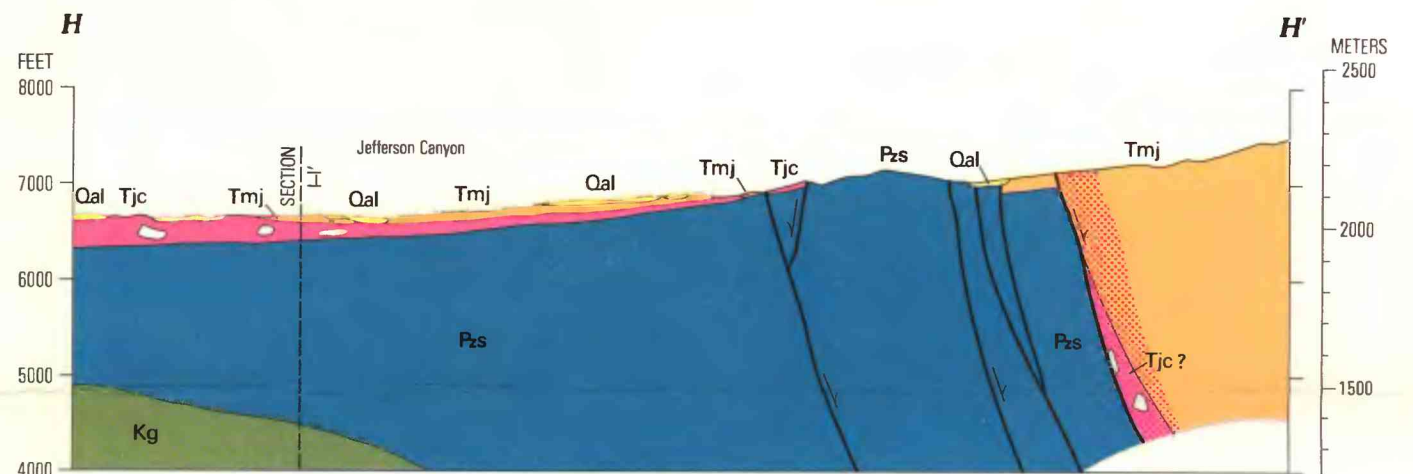
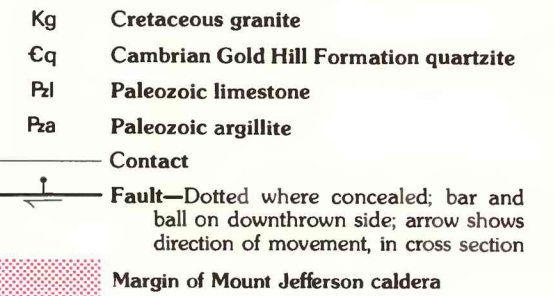
CORRELATION OF MAP UNITS



DESCRIPTION OF MAP UNITS



MEGABRECCIA CLAST DESIGNATIONS

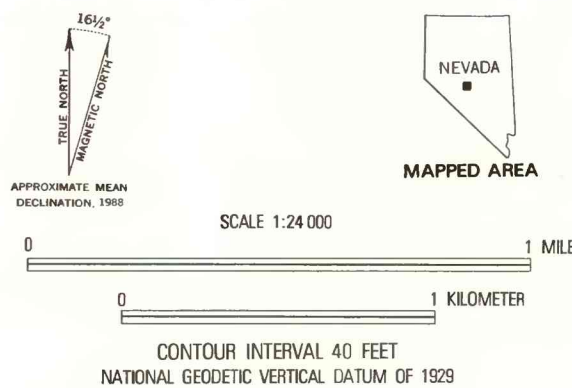


36°42'30"
117°02'30"

36°42'30"
117°00"

Base from U.S. Geological Survey,
Round Mountain, 1971

Geology by D.R. Shawe, 1973-74



GEOLOGIC MAP OF PART OF THE SOUTHWEST MARGIN OF THE MOUNT JEFFERSON CALDERA AND ADJACENT TERRANE, NYE COUNTY, NEVADA, INCLUDING GEOLOGIC CROSS SECTIONS H-H' AND I-I'