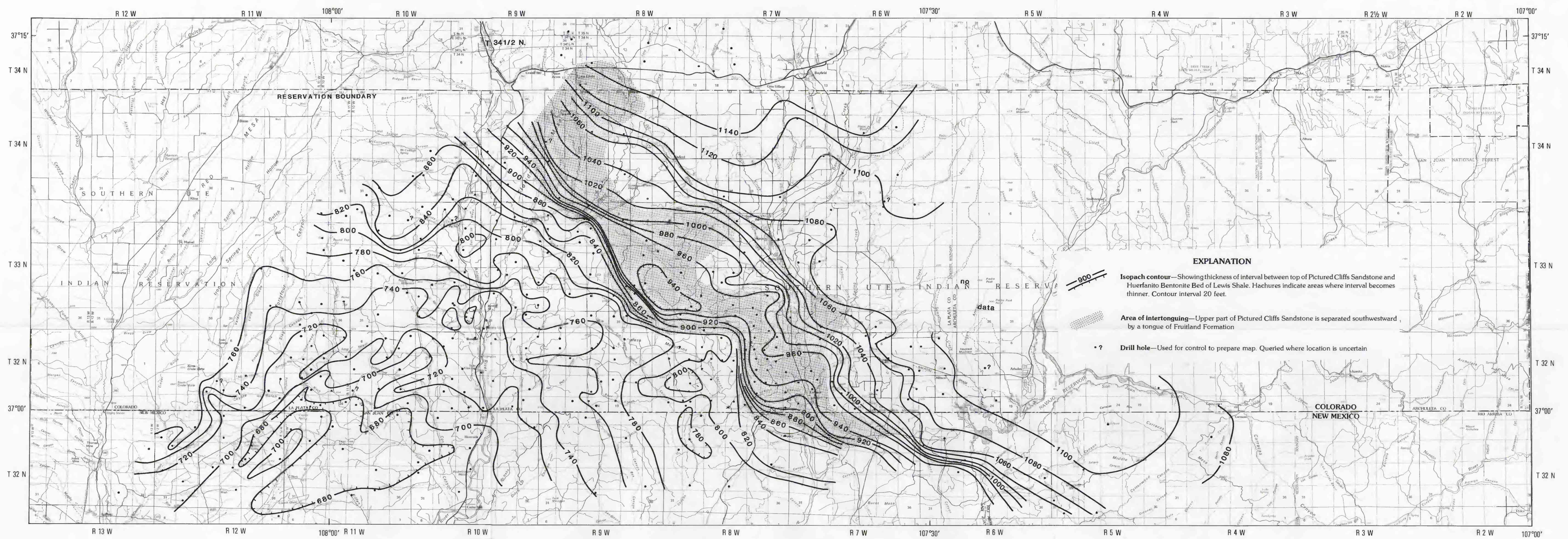
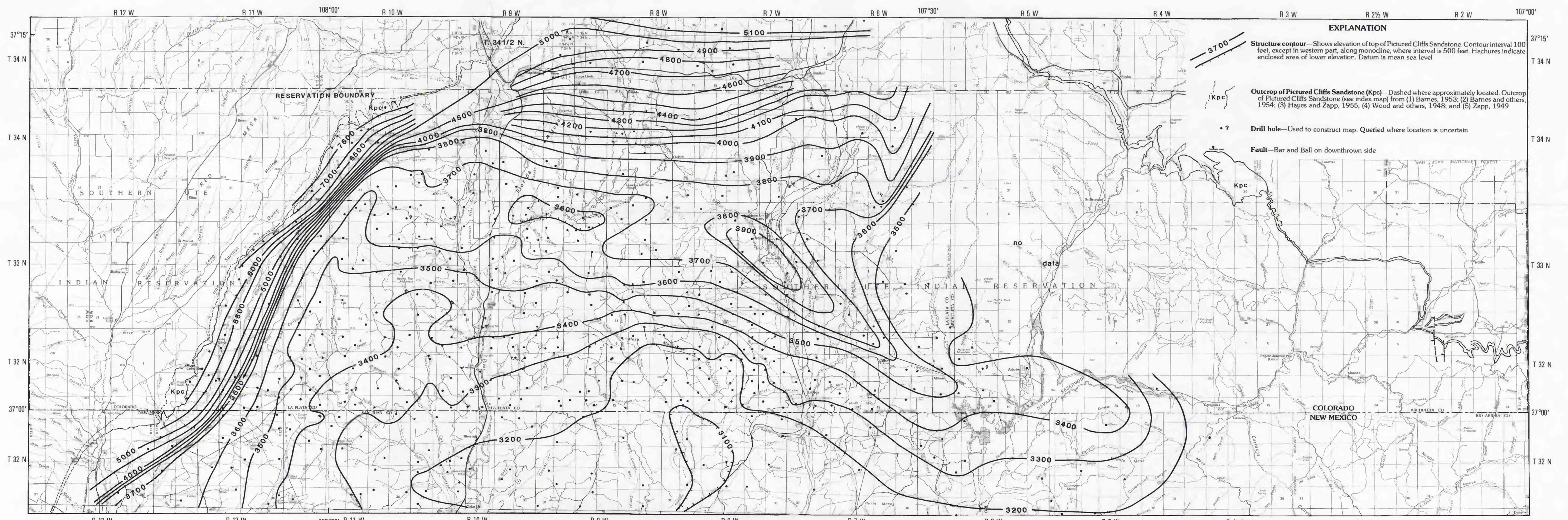


MAP A.—STRUCTURE CONTOUR MAP OF TOP OF HUERFANITO BENTONITE BED OF THE LEWIS SHALE

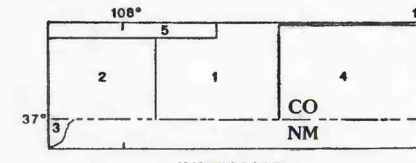
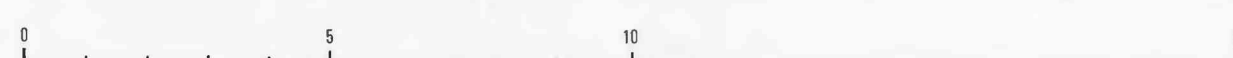
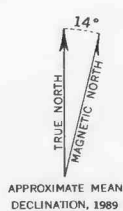


MAP B.—ISOPACH MAP OF INTERVAL BETWEEN TOP OF THE PICTURED CLIFFS SANDSTONE AND THE HUERFANITO BENTONITE BED OF THE LEWIS SHALE



MAP C.—STRUCTURE CONTOUR MAP OF TOP OF PICTURED CLIFFS SANDSTONE

Base from U.S. Geological Survey 1:100,000  
Fermington, 1980; Cortez, Navajo Reservoir, 1982;  
and Durango, 1983



**STRUCTURE CONTOUR AND ISOPACH MAPS OF THE SOUTHERN UTE INDIAN RESERVATION  
AND VICINITY, ARCHULETA AND LA PLATA COUNTIES, COLORADO, AND  
RIO ARRIBA AND SAN JUAN COUNTIES, NEW MEXICO**