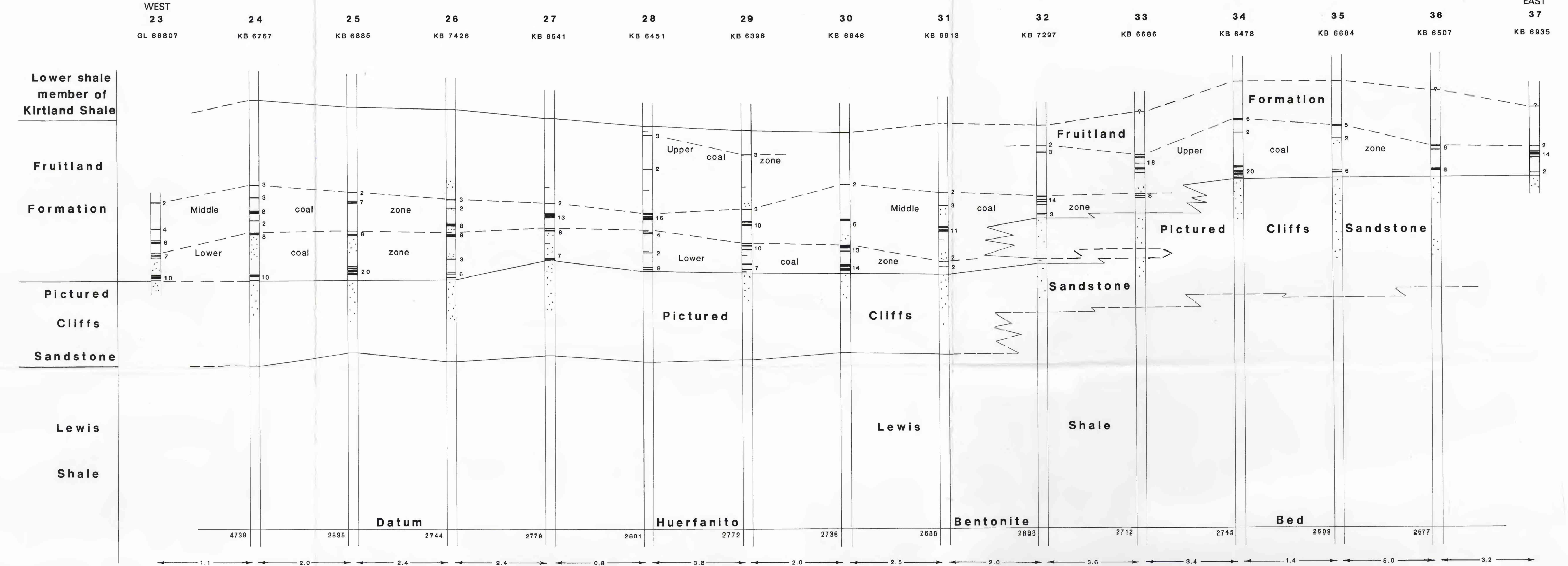
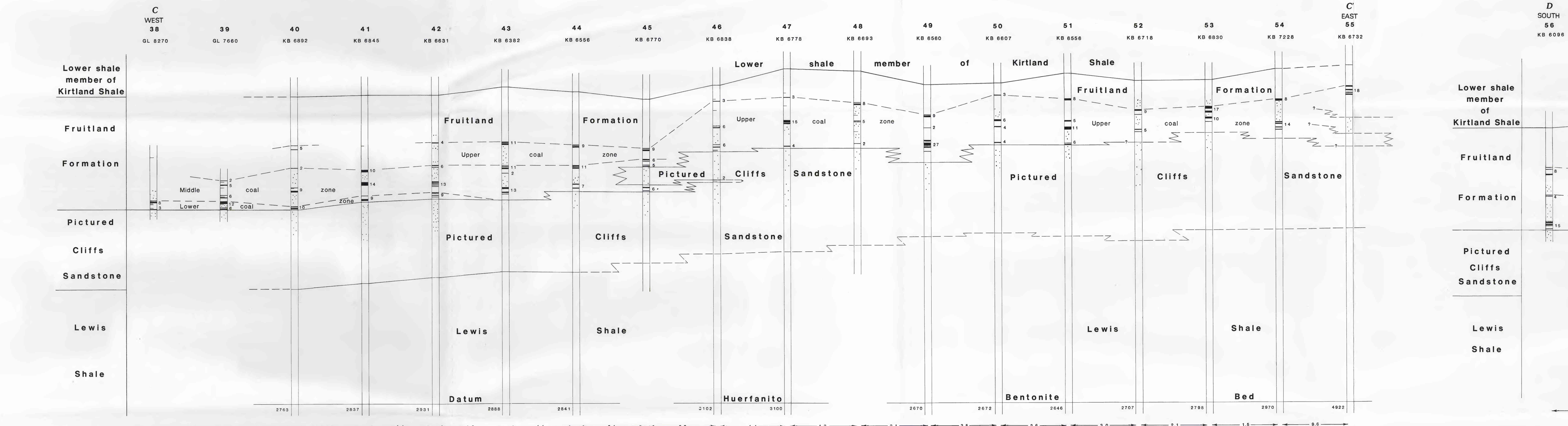


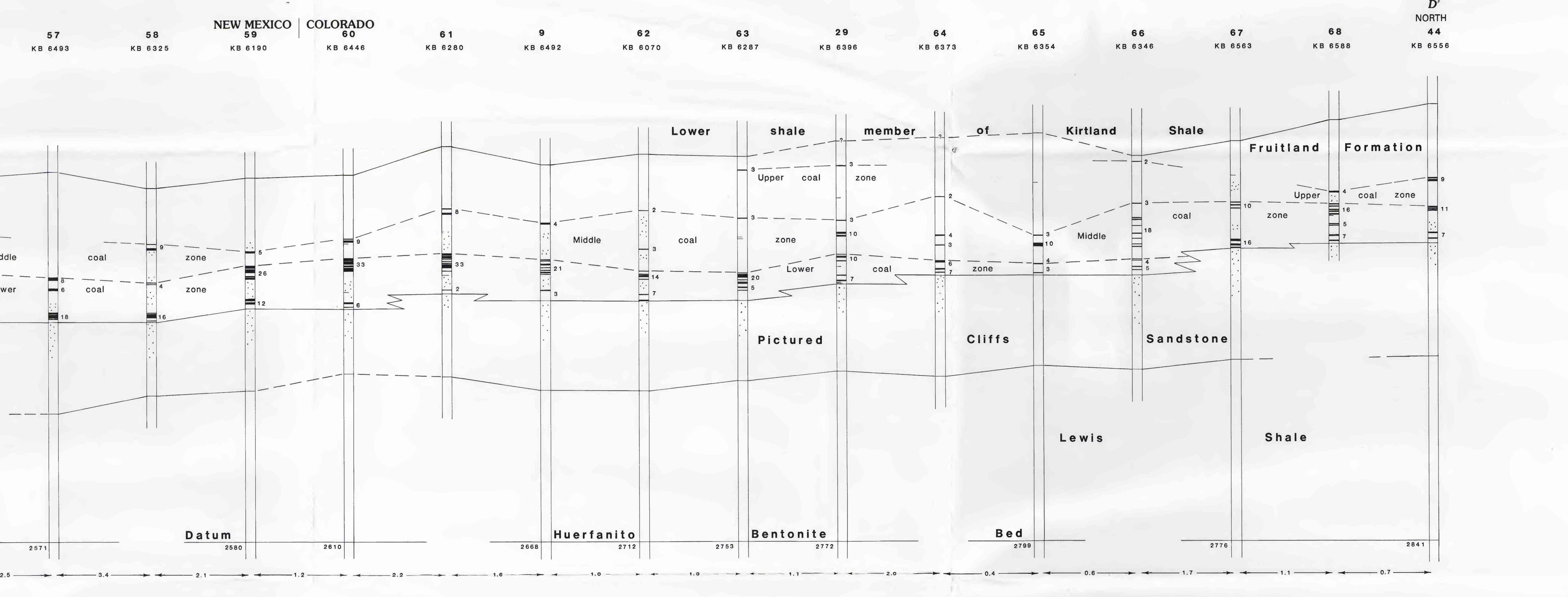
LINE OF SECTION A-A'



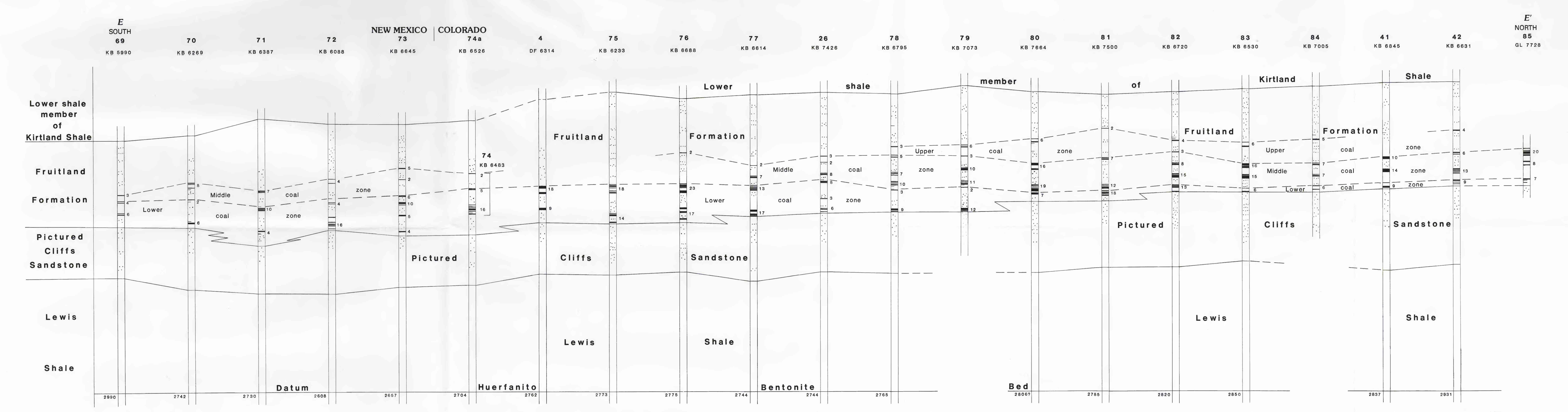
LINE OF SECTION B-B'



LINE OF SECTION C-C'



LINE OF SECTION D-D'



LINE OF SECTION E-E'

**EXPLANATION**

Vertical scale: 0, 100, 200, 300, 400 feet

5 Identifying number of drill hole—In line of section; see table 1

Datum of geophysical logs—In feet; GL, ground level; DF, derrick floor; KB, Kelly building; ground where convenient

Testative correlation

Upper boundary of coal zone—Beds used in measure estimate

Sandstone

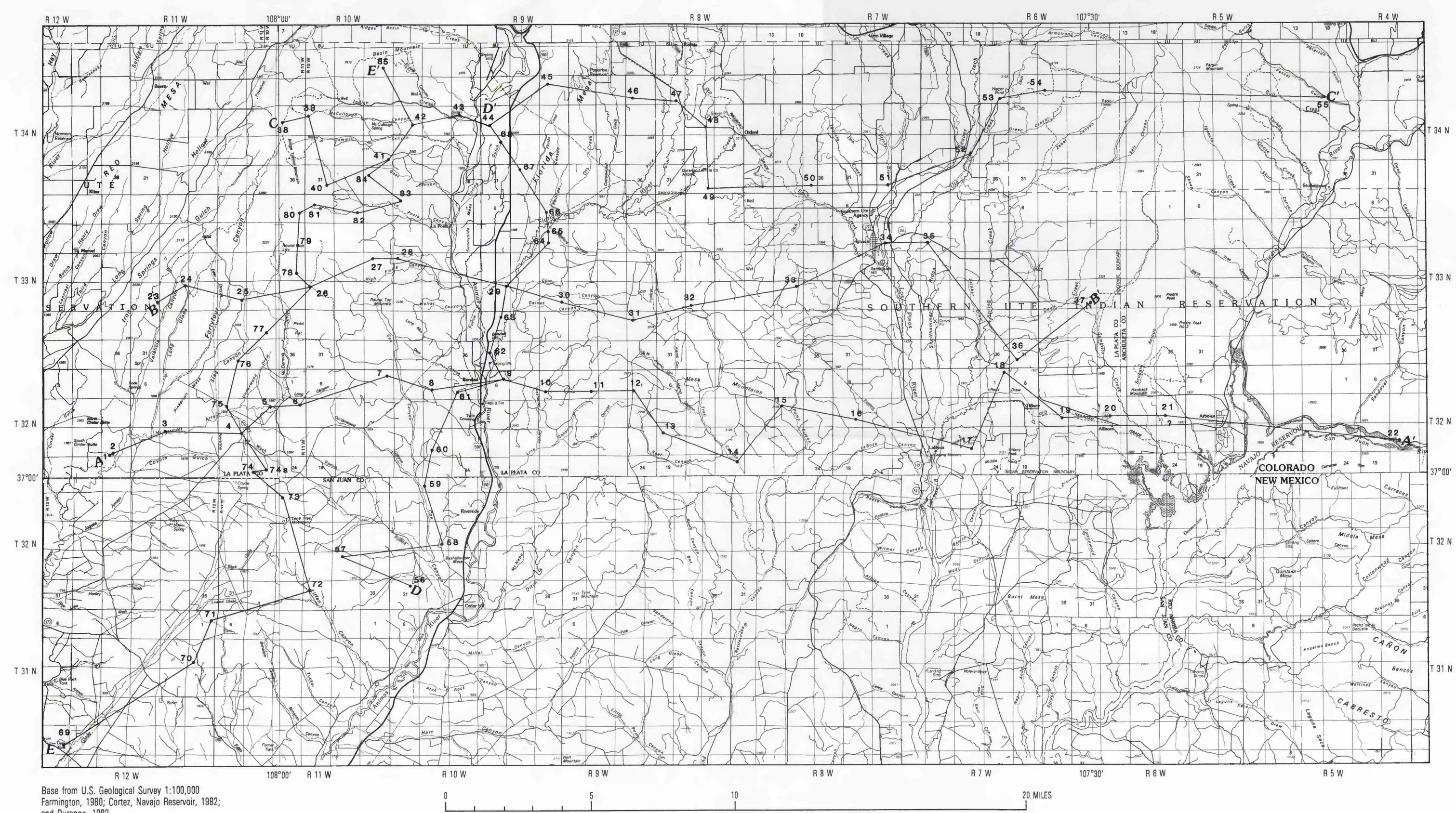
Aggregate thickness of coal—in feet; includes coal beds at least 2 feet thick, assumed to contain less than approximately one-third ash (noncombustible material); and, identified, by quality in a coal reserve

Coal bed—probably less than 2 feet thick

Elevation of Huerfanito Bentonite Bed—in feet

1.0—Distance between holes—in miles

NOTE: Nos. 74 and 74a are used in combination on line of section E-E'; No. 74 was used to identify coal beds, but the top one foot includes the Huerfanito Bentonite Bed, which was used as datum; No. 74a could not be used for coal beds, but it was satisfactory to locate the Huerfanito Bentonite Bed.



LOCATION OF LINES OF SECTION