

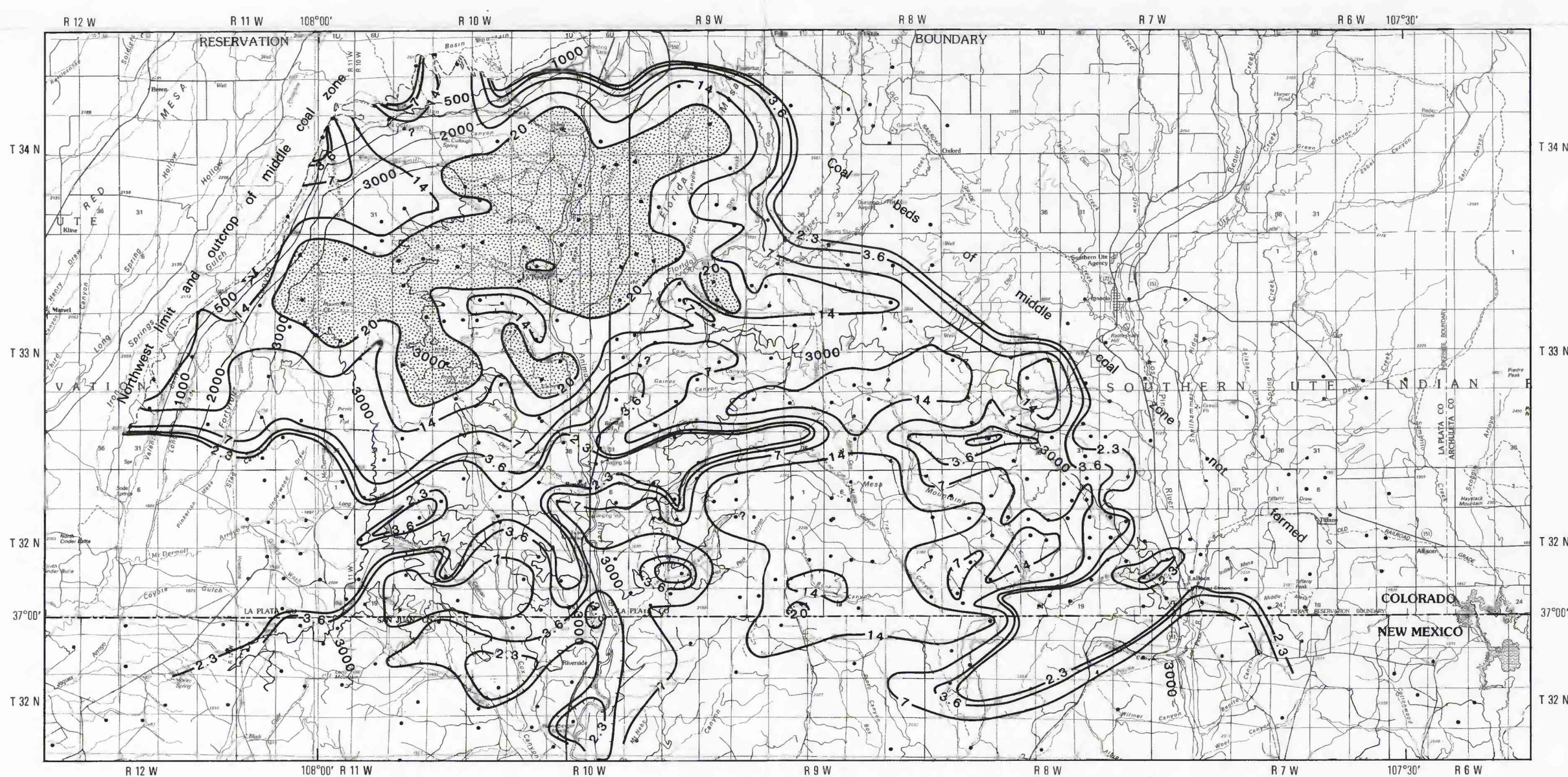
MAP A.—LOWER COAL ZONE

EXPLANATION

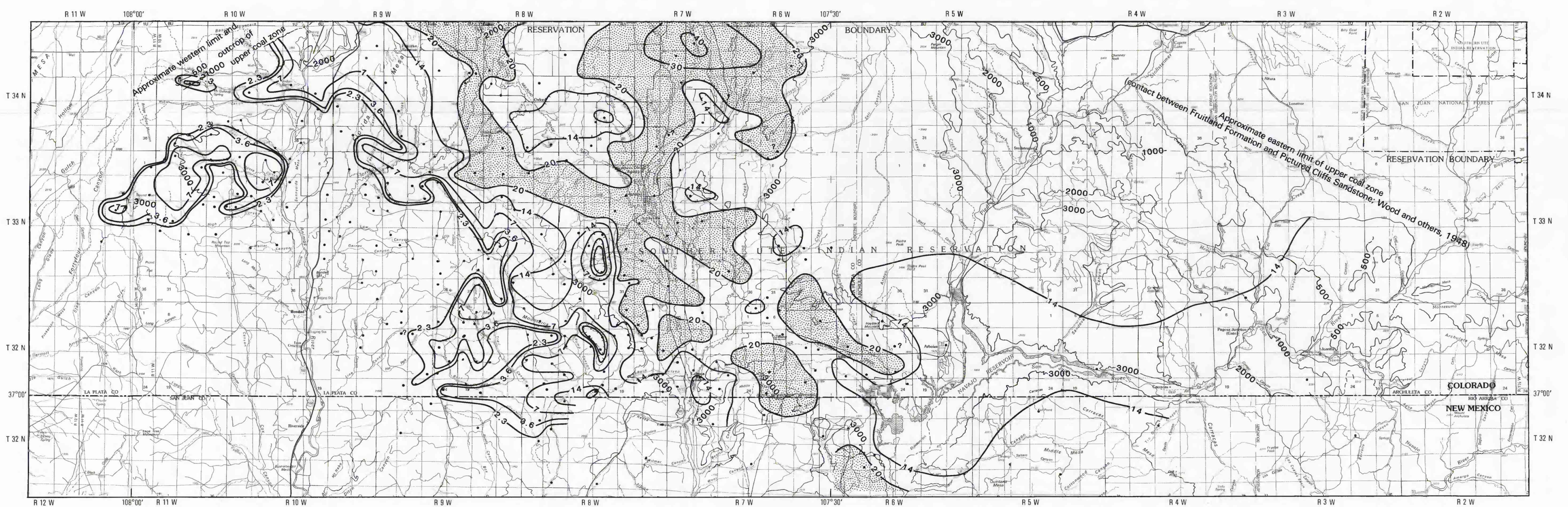
Coal isopach—Aggregate thickness of coal in zone. Isopachs needed to estimate of coal resources: 2.3, 3.6, 7, and 14 feet. Additional isopachs: 20, 30, 40, and 50 feet. Hachures indicate areas where interval becomes thinner. Stippling indicates areas where aggregate thickness is more than 20 feet.

Thickness of overburden—Contour intervals 500, 1,000, 2,000 and 3,000 feet

Drill hole—Used to construct map. Queried where location is uncertain

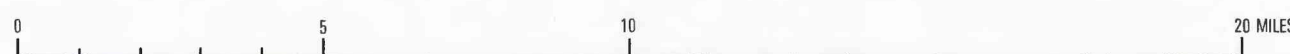
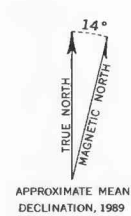


MAP B.—MIDDLE COAL ZONE



MAP C.—UPPER COAL ZONE

Base from U.S. Geological Survey 1:100,000
Farmington, 1980; Cortez, Navajo Reservoir, 1982,
and Durango, 1983



THICKNESS OF OVERBURDEN AND AGGREGATE THICKNESS OF COAL BEDS, FRUITLAND FORMATION, ARCHULETA AND LA PLATA COUNTIES, COLORADO, AND RIO ARRIBA AND SAN JUAN COUNTIES, NEW MEXICO