

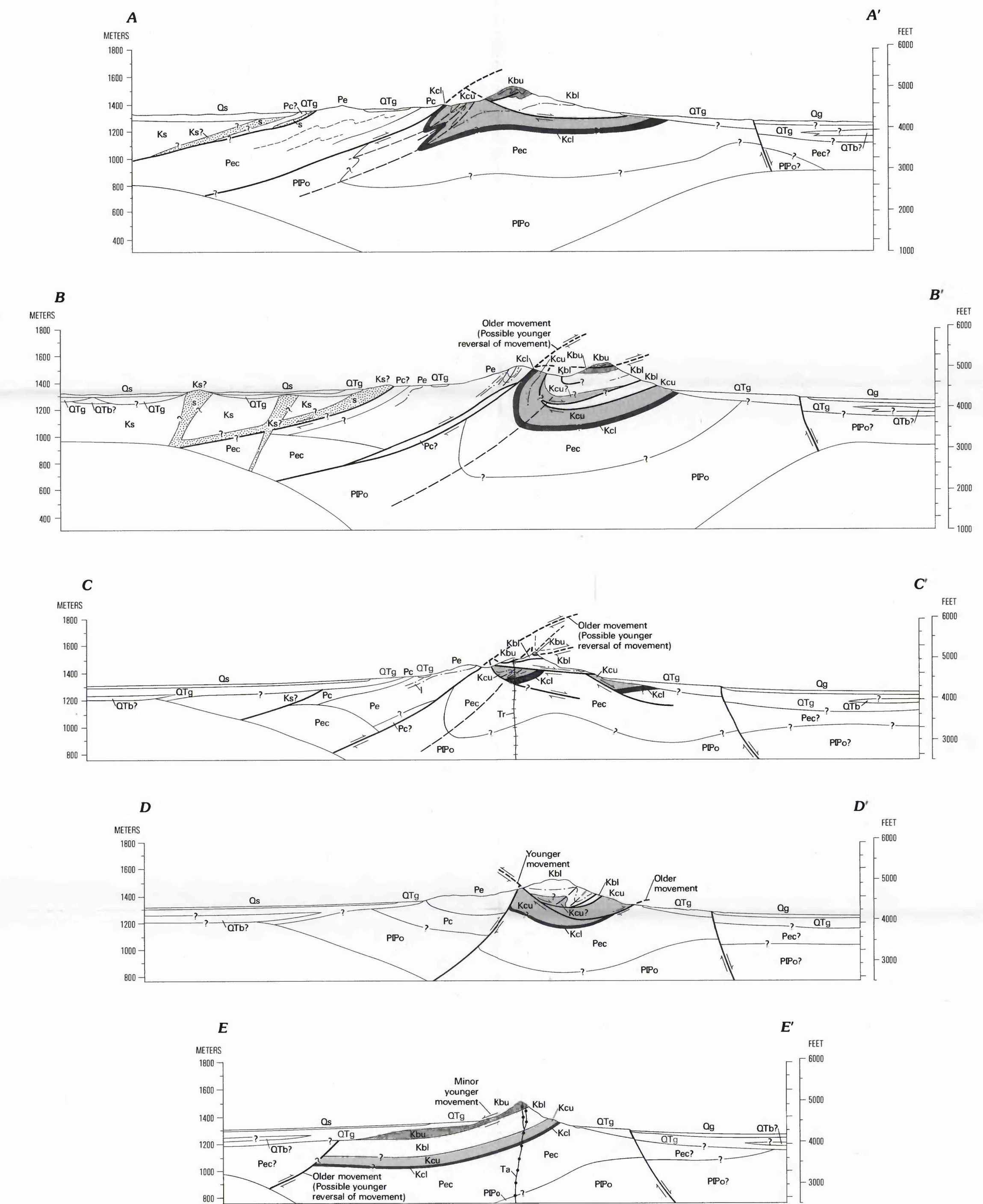
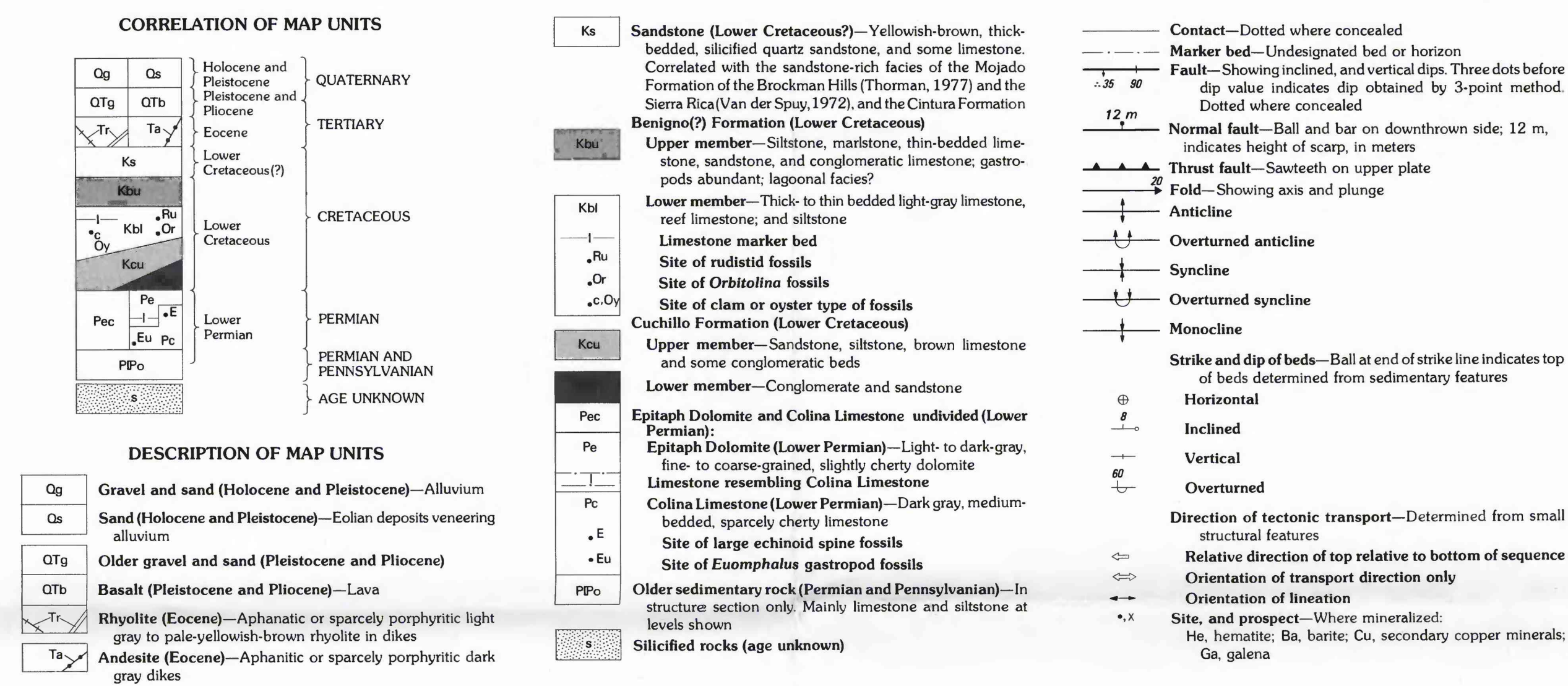
Base from U.S. Geological Survey, 1:24,000
Mt. Riley Southeast, Mt. Riley Northeast,
Noria Northwest, and Noria Southwest,
New Mexico, preliminary edition, 1983

33°
APPROXIMATE MEAN
DECLINATION, 1983

SCALE 1:24 000
2 5 1 0 1 2 KILOMETERS
1 1/2 0 1 MILE
CONTOUR INTERVAL, 40 FEET

NEW MEXICO
MAP LOCATION

Geology by Harold Drewes, 1984 and 1985,
assisted by R.C. Dawes, 1984



GEOLOGY OF THE EAST POTRILLO MOUNTAINS, CENTRAL SOUTHERN NEW MEXICO