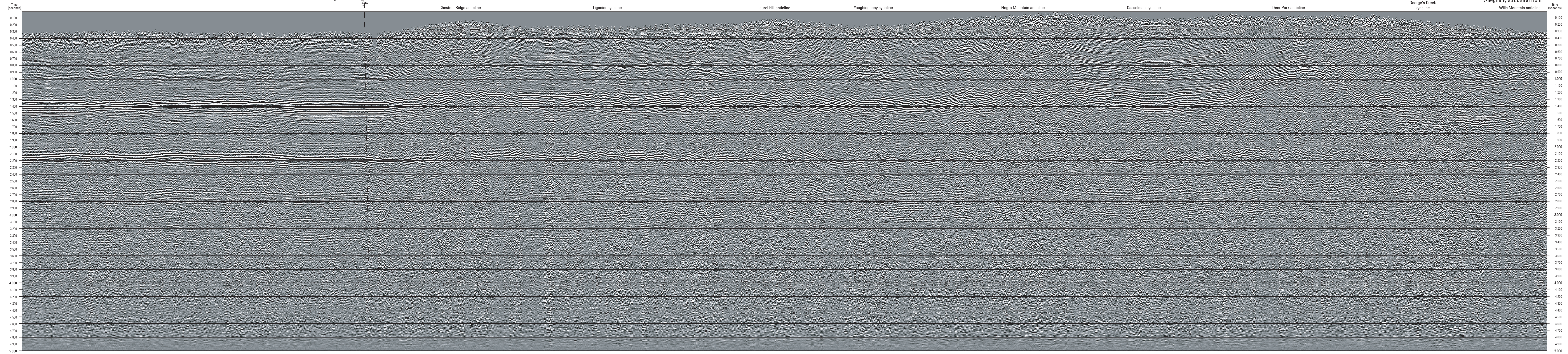


C C'

western Allegheny Plateau Rome trough Chestnut Ridge anticline Ligonier syncline Laurel Hill anticline Youghiogheny syncline Negro Mountain anticline Casselman syncline Deer Park anticline George's Creek syncline Valley and Ridge Allegheny structural front



The U.S. Geological Survey purchased the license for the digital data used in this investigation from Seismic Exchange Inc. (SEI). If further access to these data is needed, please contact SEI.

