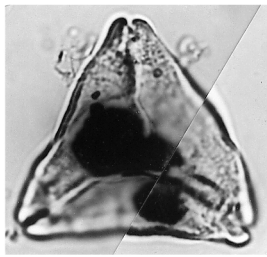


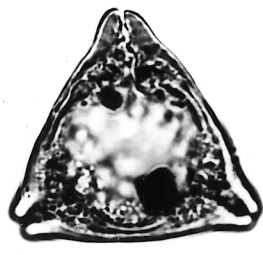
## PLATE 2

[All specimens are from Screven and Burke Counties, Georgia]

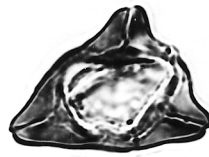
- Figure
1. *Pseudoplicapollis limitatus* Frederiksen, Ellenton Formation, Girard core (484.1–484.3 ft), Burke County.
  - 2, 3. *Nudopollis terminalis* (Pflug & Thomson in Thomson and Pflug, 1953) Pflug, Ellenton Formation. 2, Girard core (532.5–532.7 ft), Burke County; 3, Thompson Oak core (281.0 ft), Burke County.
  4. *Pseudolaesopollis ventosus* (Potonié) Frederiksen, Santee Limestone, McBean core (181.0 ft), Burke County.
  5. *Choanopollenites* sp. cf. *C. consanguineus* Tschudy of Frederiksen (1979), Ellenton Formation, Millhaven core (589.0 ft), Screven County.
  6. *Insulapollenites rugulatus* Leffingwell, Snapp Formation, McBean core (264.0 ft), Burke County.
  7. *Intratripopollenites* sp., Ellenton Formation, Millhaven core (581.0 ft), Screven County.
  8. *Pseudoplicapollis serenus* Tschudy, Ellenton Formation, Millers Pond core (252.0–257.0 ft), Burke County.
  9. *Osculapollis? colporatus* Frederiksen, Ellenton Formation, Thompson Oak core (302.0 ft), Burke County.
  10. *Trudopollis plenus* Tschudy, Ellenton Formation, Girard core (484.1–484.3 ft), Burke County.
  11. *Symplocos?* sp. aff. *Symplocos?* sp. 1 of Frederiksen (1988), Santee Limestone, Millers Pond core (148.0 ft), Burke County.
  12. *Friedrichipollis* sp., interference contrast. Ellenton Formation, Millhaven core (581.0 ft), Screven County.
  13. *Bombacidites reticulatus* Krutzsch, Ellenton Formation, Millers Pond core (252.0–257.0 ft), Burke County.
  14. *Bombacidites nacimientoensis* (Anderson) Elsik, Ellenton Formation, Millhaven core (571.0 ft), Screven County.
  15. *Lanagiopollis cribellatus* (Srivastava) Frederiksen, Ellenton Formation, Millhaven core (581.0 ft), Screven County.
  16. *Lanagiopollis* sp., probably *L. hadrodictyus* Frederiksen, Congaree Formation, Thompson Oak core (183 ft), Burke County.



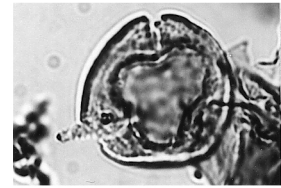
1



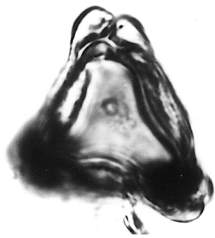
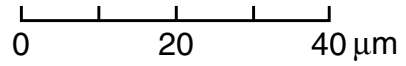
2



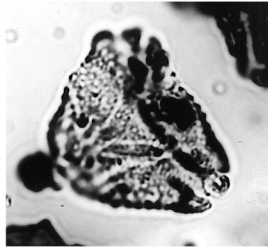
3



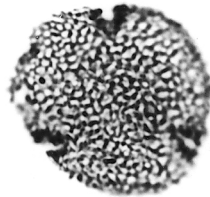
4



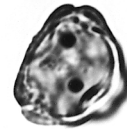
5



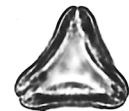
6



7



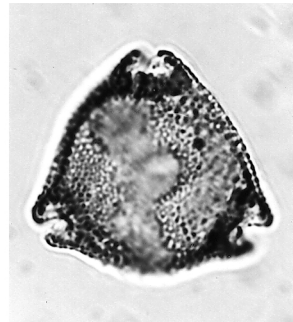
8



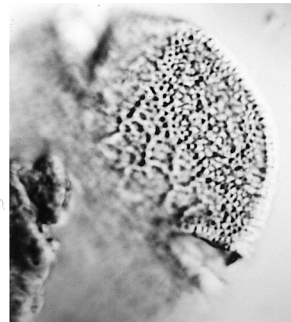
9



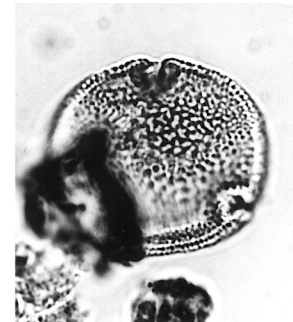
10



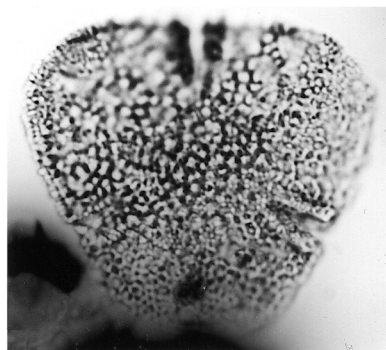
11



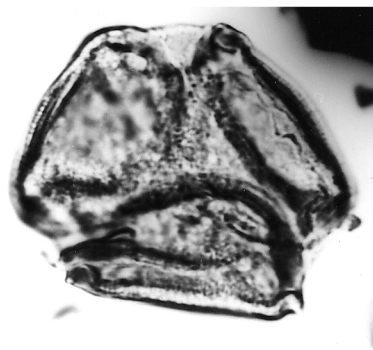
12



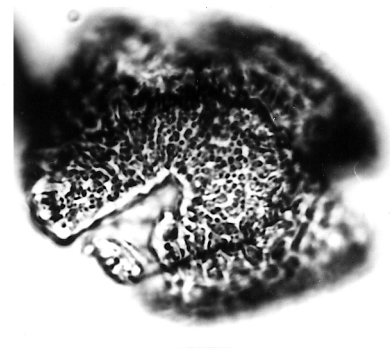
13



14



15



16

ANGIOSPERM POLLEN GRAINS