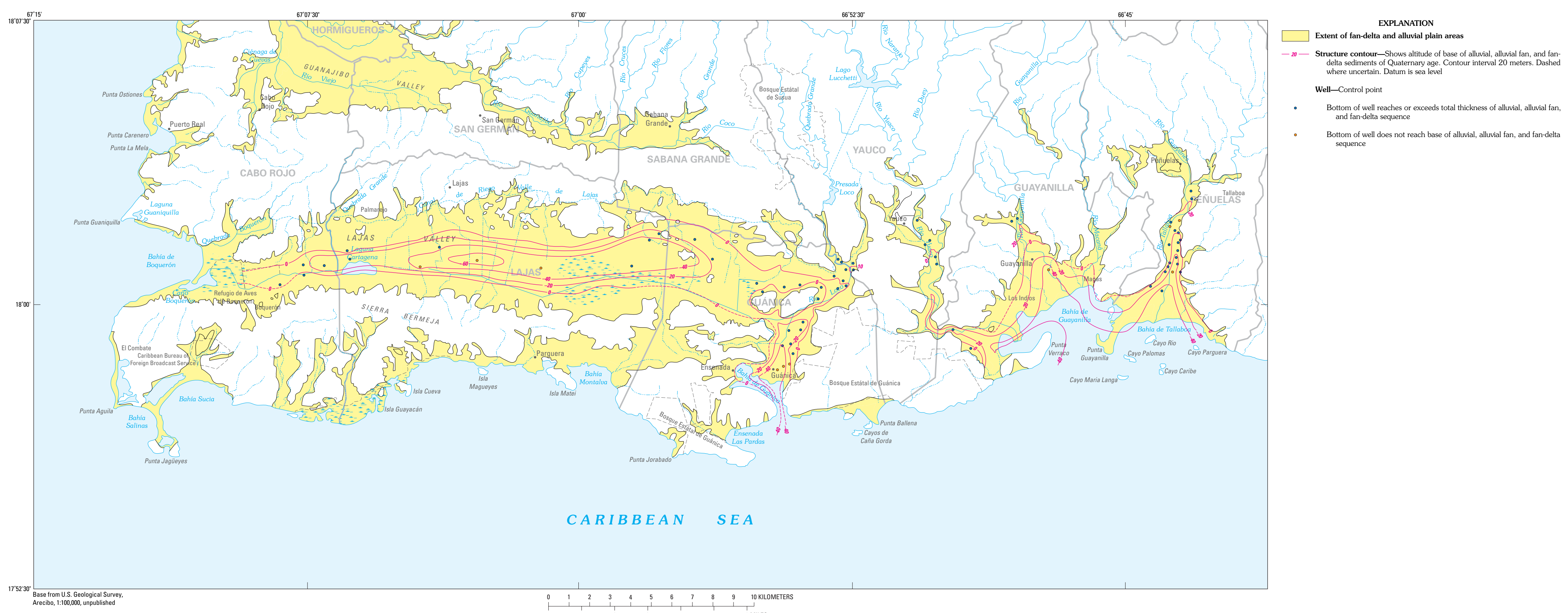
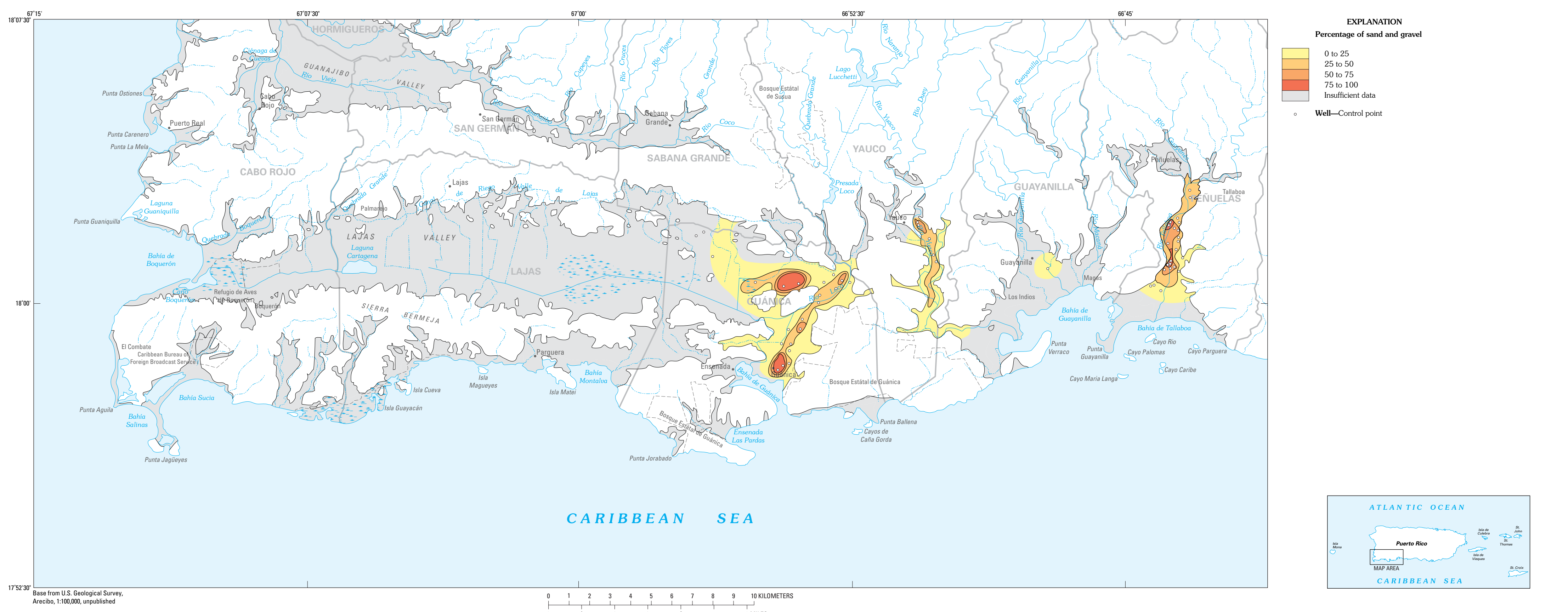


A. GEOLOGY OF THE SOUTH COAST GROUND-WATER PROVINCE



B. CONFIGURATION OF THE BEDROCK SURFACE UNDERLYING ALLUVIAL-VALLEY AND FAN-DELTA SEDIMENTS OF QUATERNARY AGE



C. PERCENTAGE OF SAND AND GRAVEL CONTAINED WITHIN ALLUVIAL-VALLEY AND FAN-DELTA AREAS

GEOLOGY AND HYDROGEOLOGY OF THE SOUTH-COAST GROUND-WATER PROVINCE BETWEEN CABO ROJO AND PONCE, PUERTO RICO

By
Robert A. Renken, Fernando Gómez-Gómez, and Jesús Rodríguez-Martínez
2002