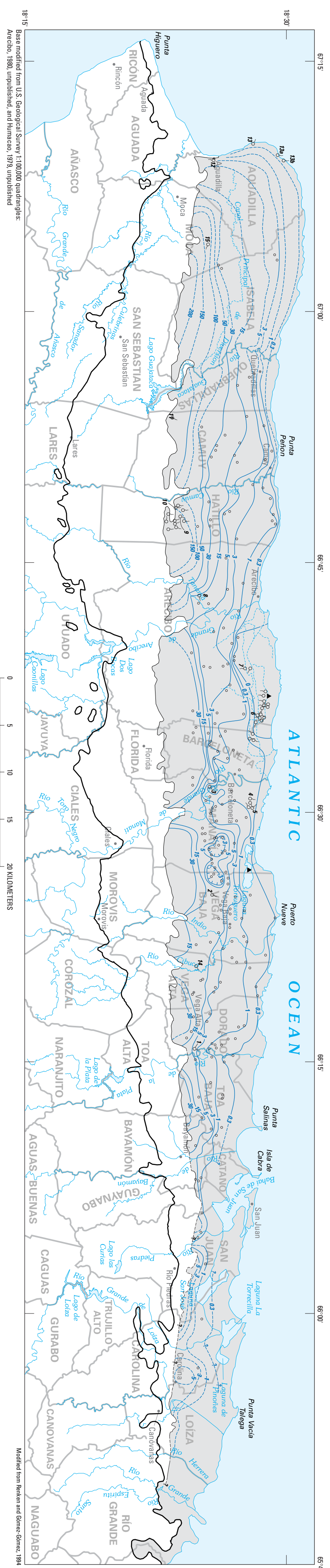
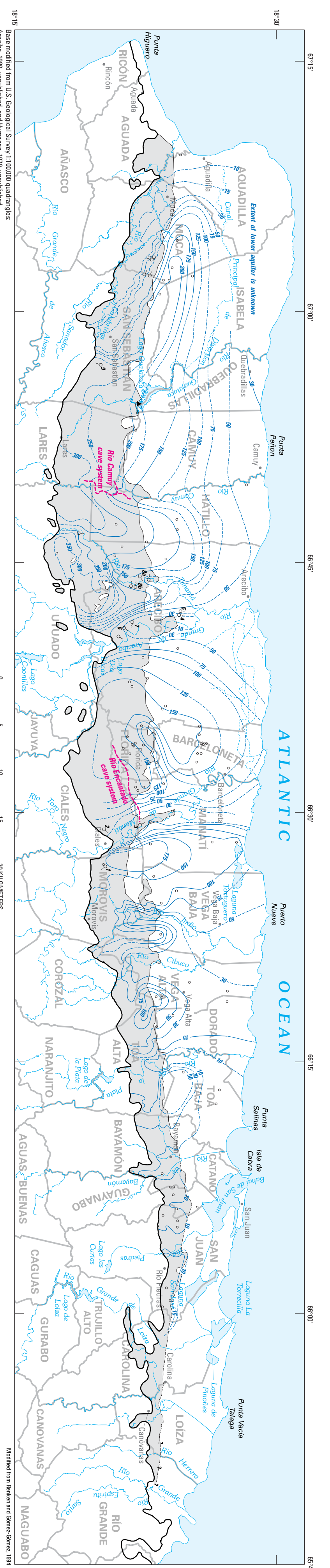


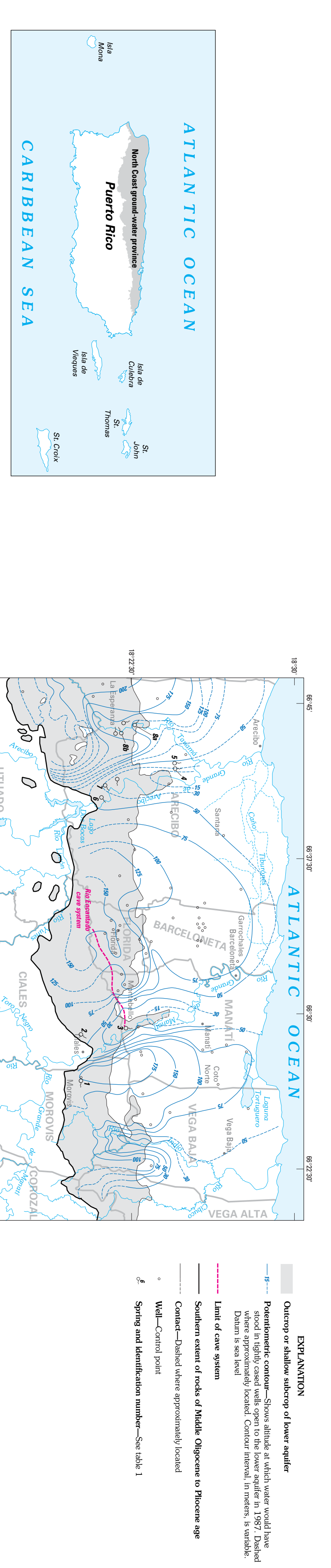
A. SECTION A-A SHOWING PRINCIPAL AQUIFERS AND CONFINING UNITS OF THE NORTH COAST LIMESTONE AQUIFER SYSTEM



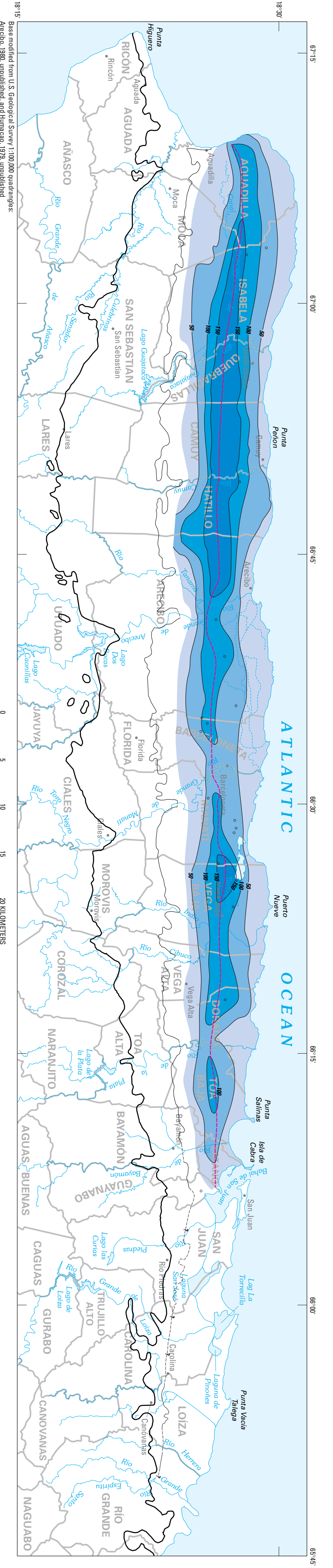
B. ESTIMATED POTENTIOMETRIC SURFACE OF THE UPPER AQUIFER (AVERAGE CONDITIONS BETWEEN 1986 AND 1990)



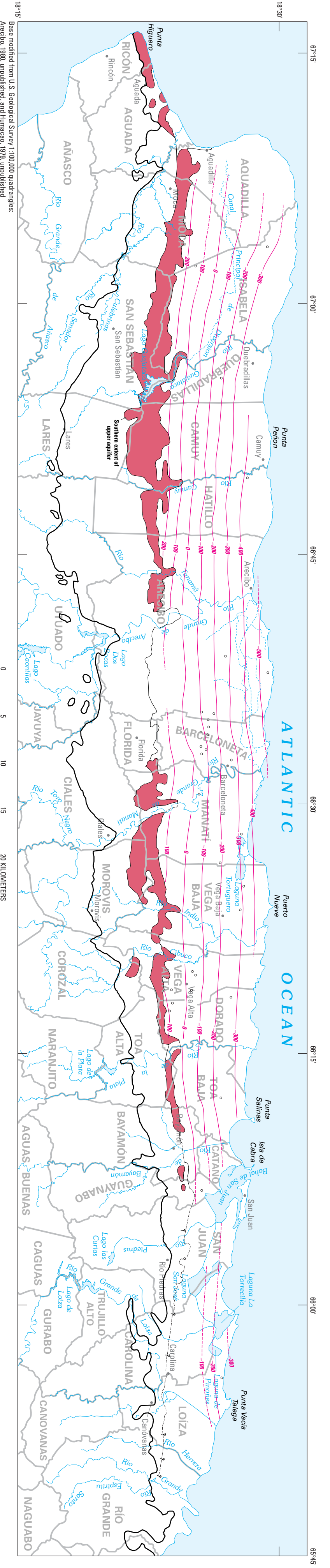
C. ESTIMATED PREDEVELOPMENT POTENTIOMETRIC SURFACE OF THE LOWER AQUIFER



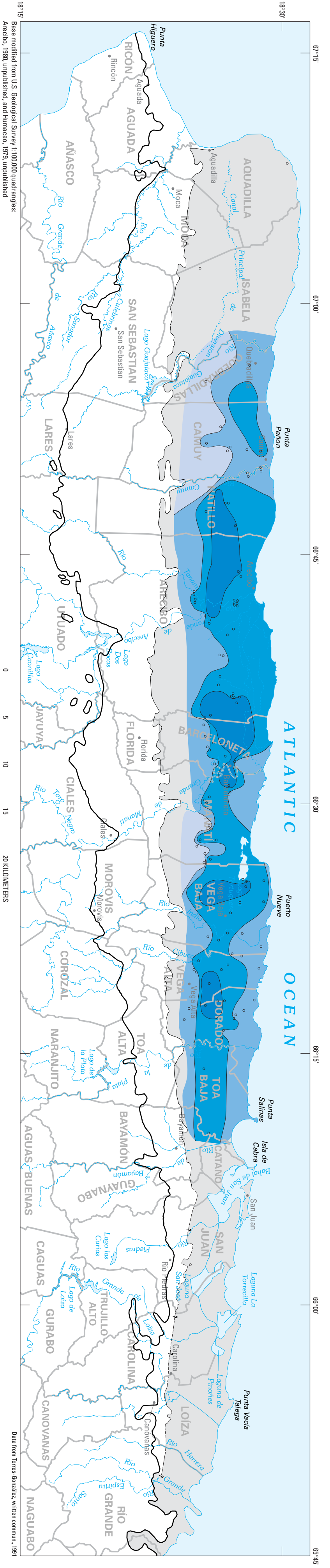
D. POTENTIOMETRIC SURFACE OF THE LOWER AQUIFER IN THE AREA OF GREATEST DEVELOPMENT (RiO GRANDE DE AGRICO) TO CIBICO) SHOWING AVERAGE CONDITIONS DURING 1987



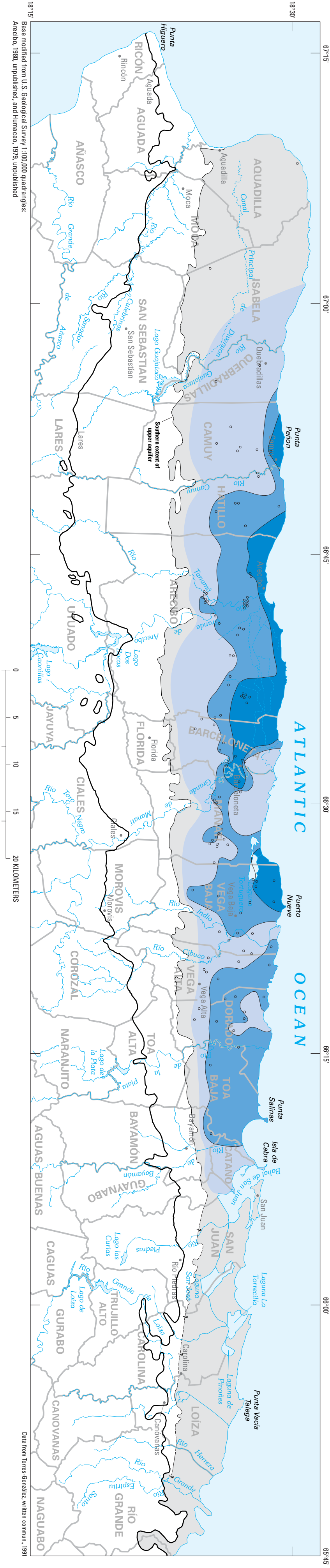
E. ESTIMATED THICKNESS OF THE FRESHWATER LENS WITHIN THE UPPER AQUIFER



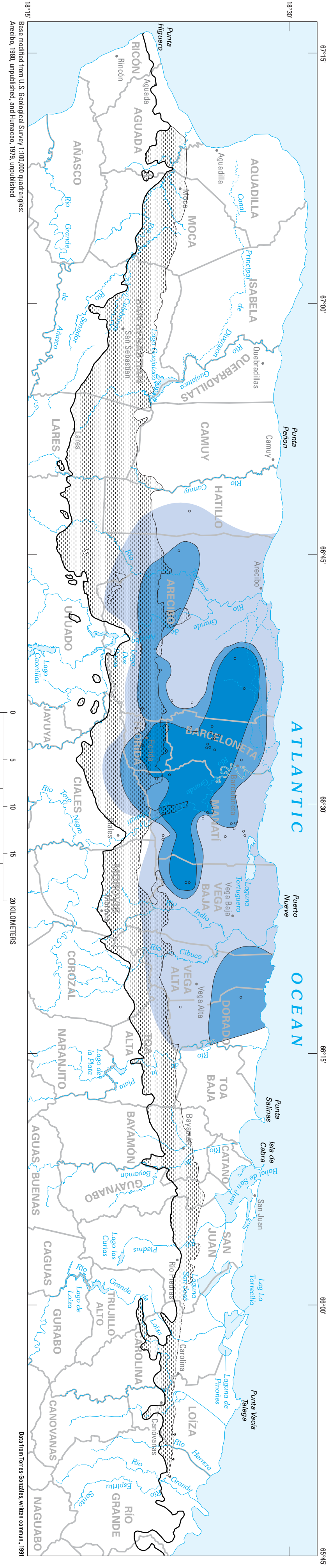
F. TOP OF THE MIDDLE CONFINING UNIT



G. DISTRIBUTION OF TRANSMISSIVITY IN THE UPPER AQUIFER



H. DISTRIBUTION OF HYDRAULIC CONDUCTIVITY IN THE UPPER AQUIFER



I. DISTRIBUTION OF TRANSMISSIVITY IN THE LOWER AQUIFER

HYDROGEOLOGY AND HYDROLOGY OF THE NORTH COAST LIMESTONE AQUIFER SYSTEM, PUERTO RICO

By Robert A. Renken, Fernando Gomez-Gomez, and Jesus Rodriguez-Martinez

2002