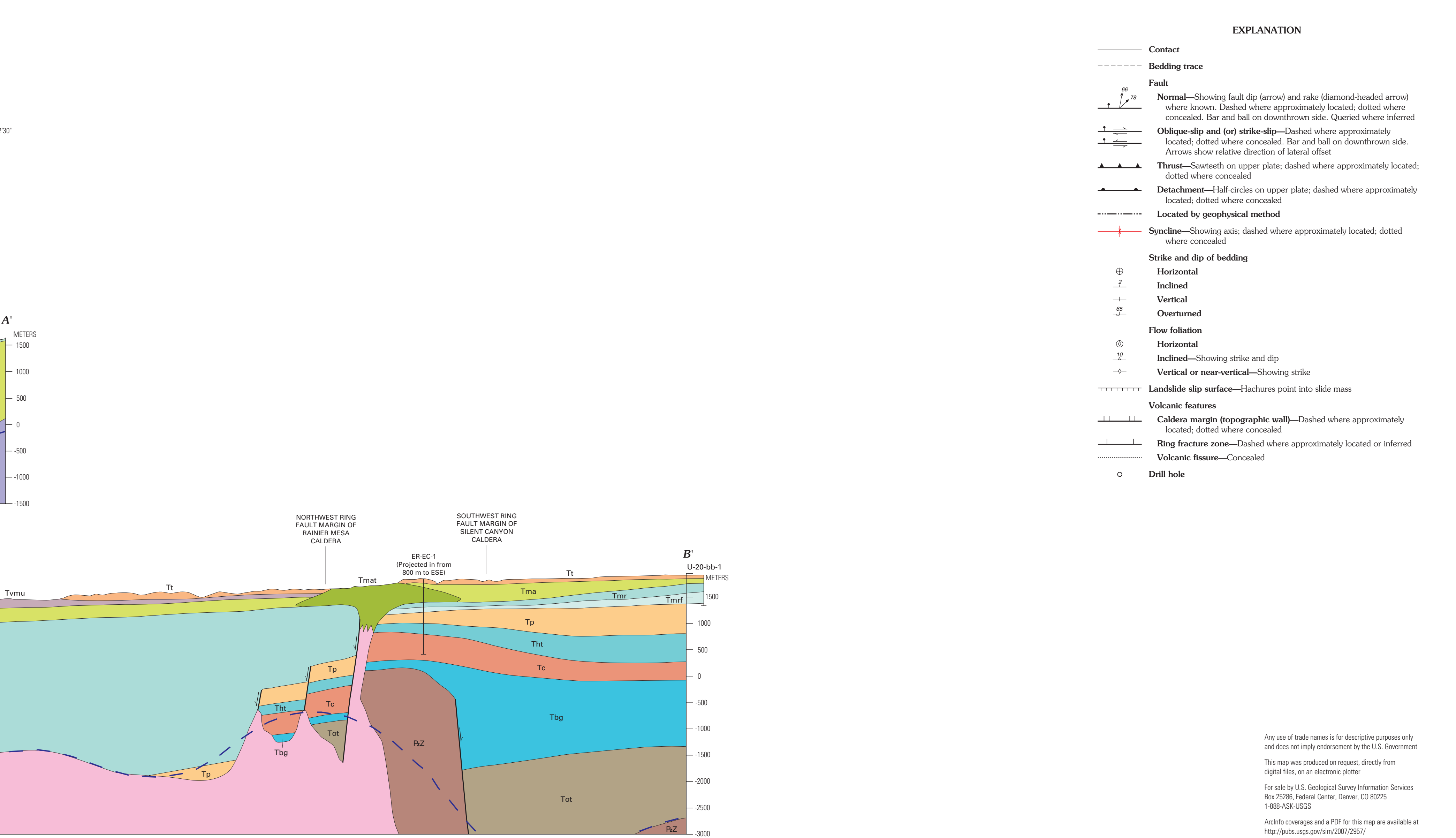
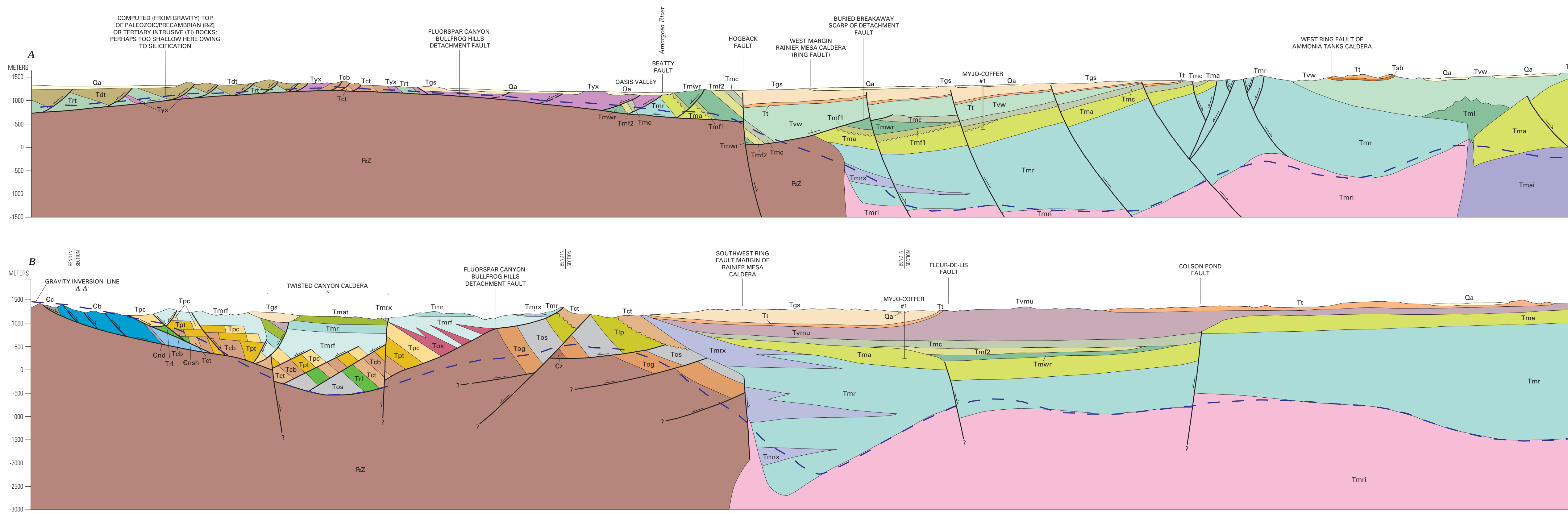


Based from U.S. Geological Survey, Primm, Nevada, Nov. 1979 and Barth, Nov. 1986. Revisions and corrections by J. L. Slate and P. L. Ryder from 1988 to 1998. Surface geology mapped by J. L. Slate and P. L. Ryder from 1988 to 1998. Original map prepared by J. L. Slate, U.S. Geological Survey, and P. L. Ryder. Editing and digital cartography by Susan M. Dammann, Denver National Center. Manuscript prepared for publication January 11, 2007.



GEOLOGIC MAP OF OASIS VALLEY SPRING-DISCHARGE AREA AND VICINITY, NYE COUNTY, NEVADA
 By Christopher J. Fridrich, Scott A. Minor, Janet L. Slate, and Phil L. Ryder
 2007