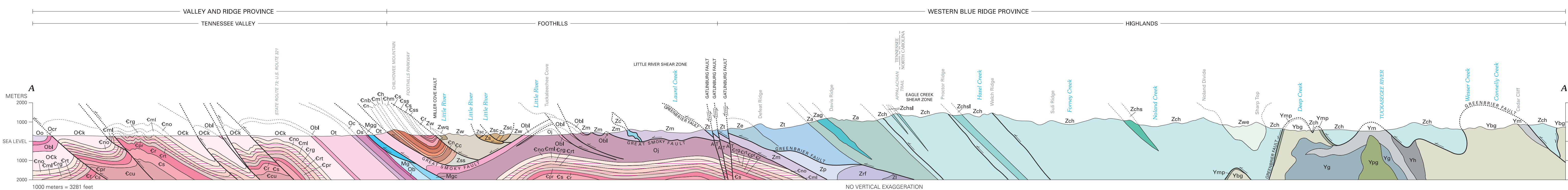


Base from Tennessee Valley Authority and U.S. Geological Survey  
Fontana Lake, 1963, and Knoxville, 1963  
Universal Transverse Mercator projection. 1927 North American datum  
25,000-foot grid ticks based on Tennessee and North Carolina coordinate systems.  
Tennessee grid ticks projected to Fontana Lake quadrangle  
10,000-meter Universal Transverse Mercator grid, zone 17

Geology mapped from 1993 to 2003  
Initial digital compilation by Danielle Denenry  
Geologic map editing by James R. Estabrook  
Digital cartography by D. Paul Mathieux



# GEOLOGIC MAP OF THE GREAT SMOKY MOUNTAINS NATIONAL PARK REGION, TENNESSEE AND NORTH CAROLINA

By  
Scott Southworth, Art Schultz, John N. Aleinikoff, and Arthur J. Merschat  
2012