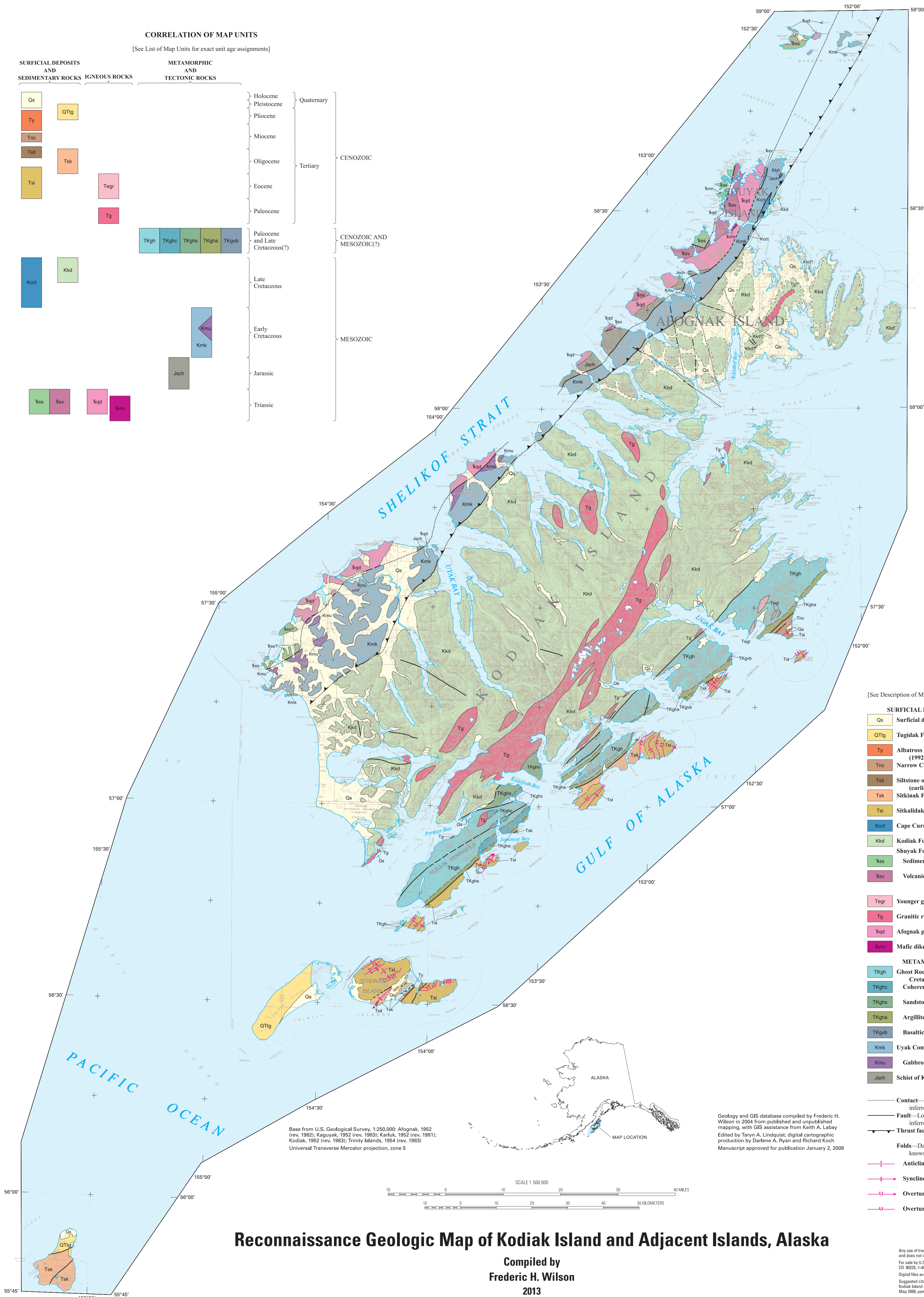
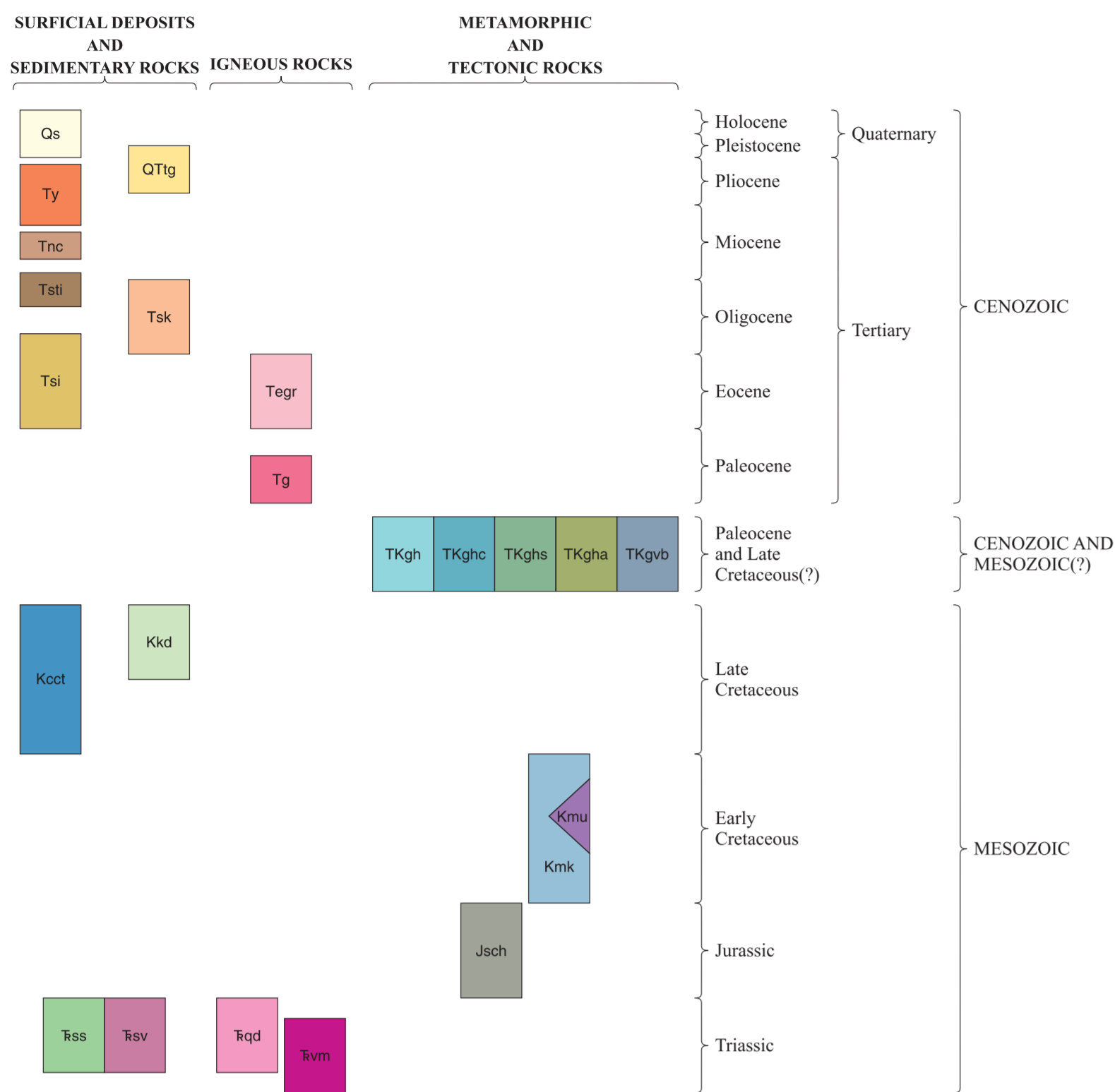


CORRELATION OF MAP UNITS

[See List of Map Units for exact unit age assignments]



LIST OF MAP UNITS

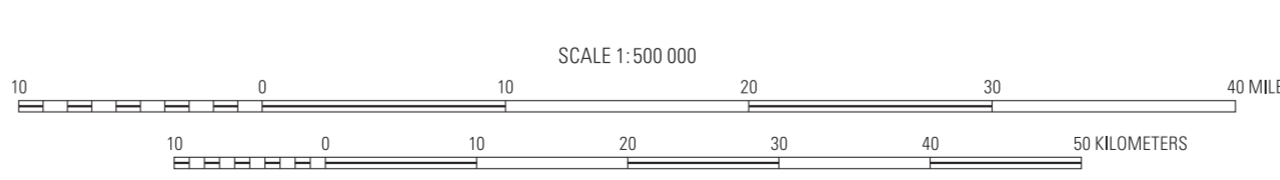
[See Description of Map Units (in pamphlet) for complete unit descriptions]

- SURFICIAL DEPOSITS AND SEDIMENTARY ROCKS**
- Qs Surficial deposits, undivided (Quaternary)
 - QTlg Tugidak Formation (early Pleistocene and late Pliocene)
 - Ty Albatross sedimentary sequence of Clendenen and others (1992) (Pliocene or late Miocene)
 - Tnc Narrow Cape Formation (middle Miocene)
 - Tsi Siltstone of Trinity Islands of Clendenen and others (1992) (earliest Miocene or late Oligocene)
 - Tsk Sitkinak Formation (Oligocene)
 - Tsl Sitkalidak Formation (Oligocene and Eocene)
 - Kcct Cape Current terrane of Connelly (1978) (Late Cretaceous)
 - Kkd Kodiak Formation (Late Cretaceous)
 - Shuyak Formation (Late Triassic)
 - Tss Sedimentary member
 - Tsv Volcanic member
- IGNEOUS ROCKS**
- Tegr Younger granitic rocks (Eocene?)
 - Tg Granitic rocks (Paleocene)
 - Tqd Afognak pluton (Triassic)
 - Tvm Mafic dikes, sills, and plugs (Triassic?)
- METAMORPHIC AND TECTONIC ROCKS**
- TKgh Ghost Rocks Formation, undivided (Paleocene and Late Cretaceous?)
 - TKghc Coherent sedimentary rocks
 - TKghs Sandstone-rich unit
 - TKgha Argillite-rich unit
 - TKgvb Basaltic volcanic and hypabyssal rocks
 - Kmk Uyak Complex (Early Cretaceous)
 - Kmu Gabbroic and ultramafic rocks
 - Jsch Schist of Kodiak Island (Jurassic)

- Contact—Long-dashed where approximate; short-dashed where inferred
- Fault—Long-dashed where approximate; short-dashed where inferred; dotted where concealed
- Thrust fault—Dotted where concealed. Sawtooth on upper plate
- Folds—Dashed where approximate. Showing plunge where known
- Anticline
- Syncline
- Overturned anticline
- Overturned syncline

Base from U.S. Geological Survey, 1:250,000: Afognak, 1952 (rev. 1982); Kaguyak, 1952 (rev. 1983); Kartuk, 1952 (rev. 1981); Kodiak, 1952 (rev. 1983); Trinity Islands, 1954 (rev. 1983)
Universal Transverse Mercator projection, zone 5

Geology and GIS database compiled by Frederic H. Wilson in 2004 from published and unpublished mapping, with GIS assistance from Keith A. Labay
Edited by Taryn A. Lindquist; digital cartographic production by Darlene A. Ryan and Richard Koch
Manuscript approved for publication January 2, 2008



Reconnaissance Geologic Map of Kodiak Island and Adjacent Islands, Alaska

Compiled by
Frederic H. Wilson
2013

Any use of trade, product, or firm names in this publication is for descriptive purposes only and does not imply endorsement by the U.S. Government
For sale by U.S. Geological Survey, Information Services, Box 25286, Federal Center, Denver, CO 80225, 1-888-ASK-USGS
Digital files available at <http://pubs.usgs.gov/sim/2999/>
Suggested citation: Wilson, Frederic H., comp., 2013, Reconnaissance geologic map of Kodiak Island and adjacent islands, Alaska: U.S. Geological Survey Scientific Investigations Map 2999, pamphlet 8 p., scale 1:500,000, available at <http://pubs.usgs.gov/sim/2999/>