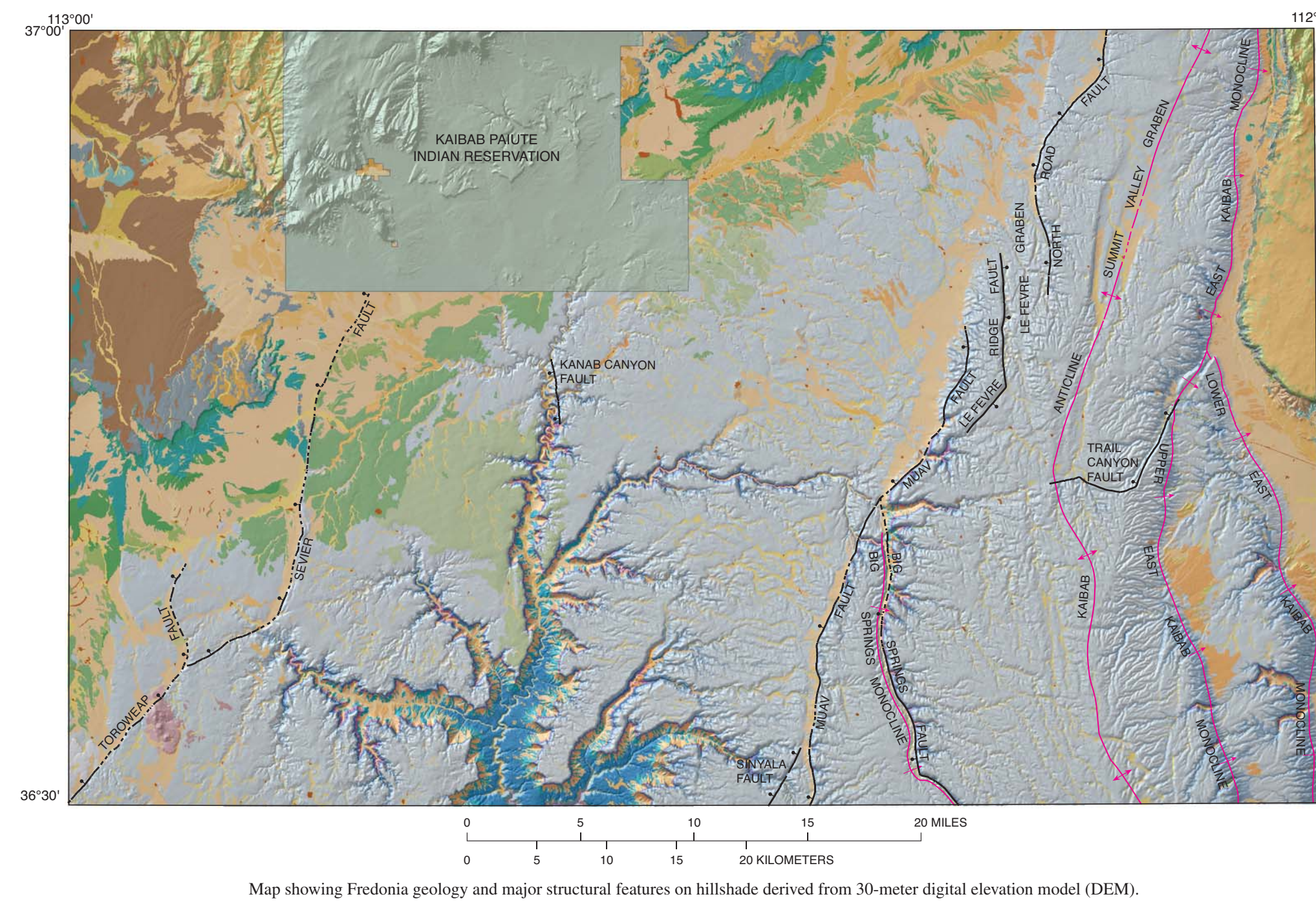


**Figure 2.** Index showing 7.5' quadrangle maps of the Fredonia 30' x 60' quadrangle, Arizona



Map showing Fredonia geology and major structural features on hillshade derived from 30-meter digital elevation model (DEM).



View looking north into House Rock Valley along the east Kaibab Monocline. (Photograph by G.H. Billingsley, August, 2008)

# Geologic Map of the Fredonia 30' x 60' Quadrangle, Mohave and Coconino Counties, Northern Arizona

By  
George H. Billingsley, Susan S. Priest, and Tracey J. Felger  
2008