

Seafloor character mapped in 2011
GIS acquisition and digital cartography by Nadine E. Golden and Evelyne L. Phillips
Edited by Tanya A. Linkovist
Manuscript approved for publication July 25, 2012

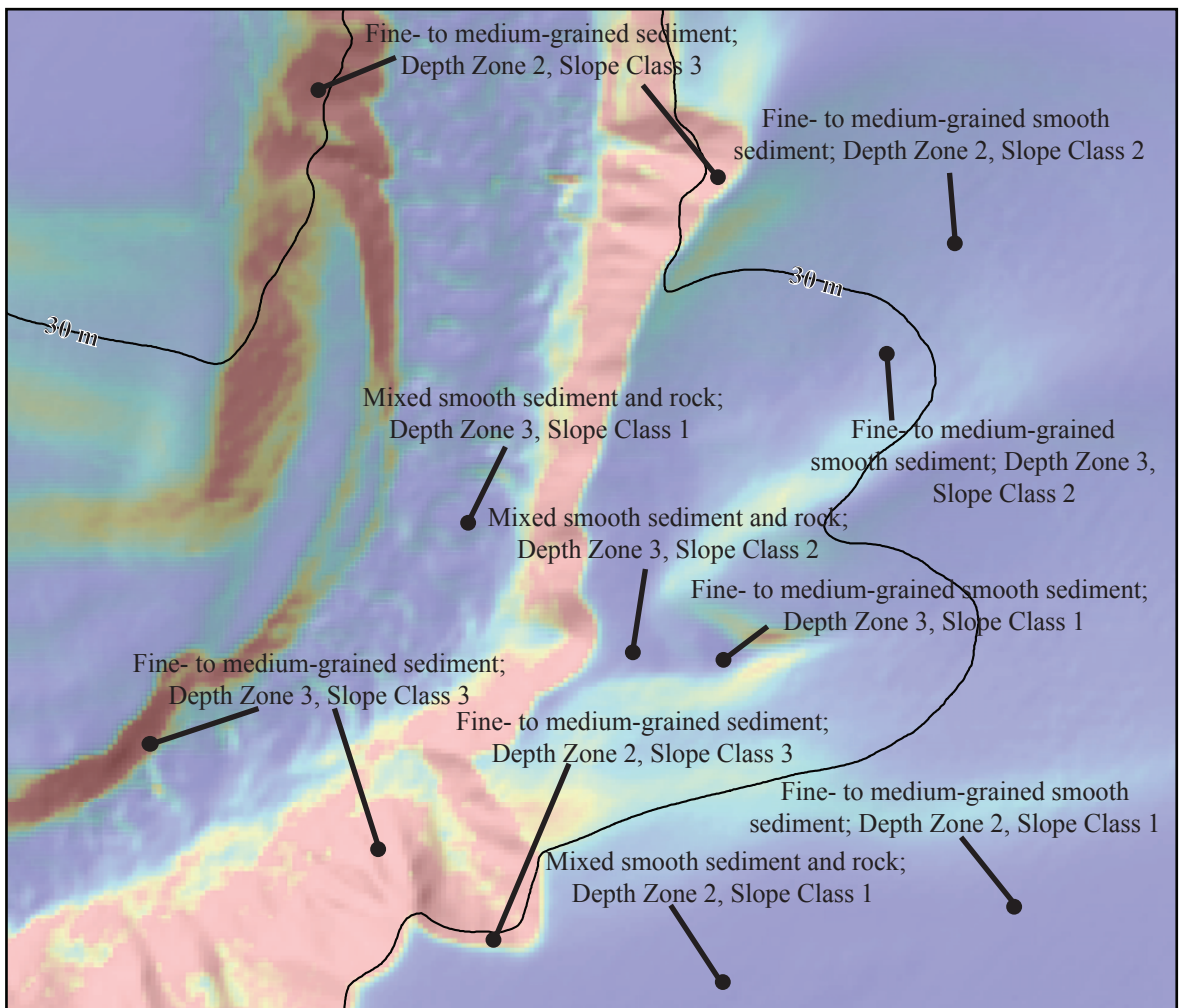
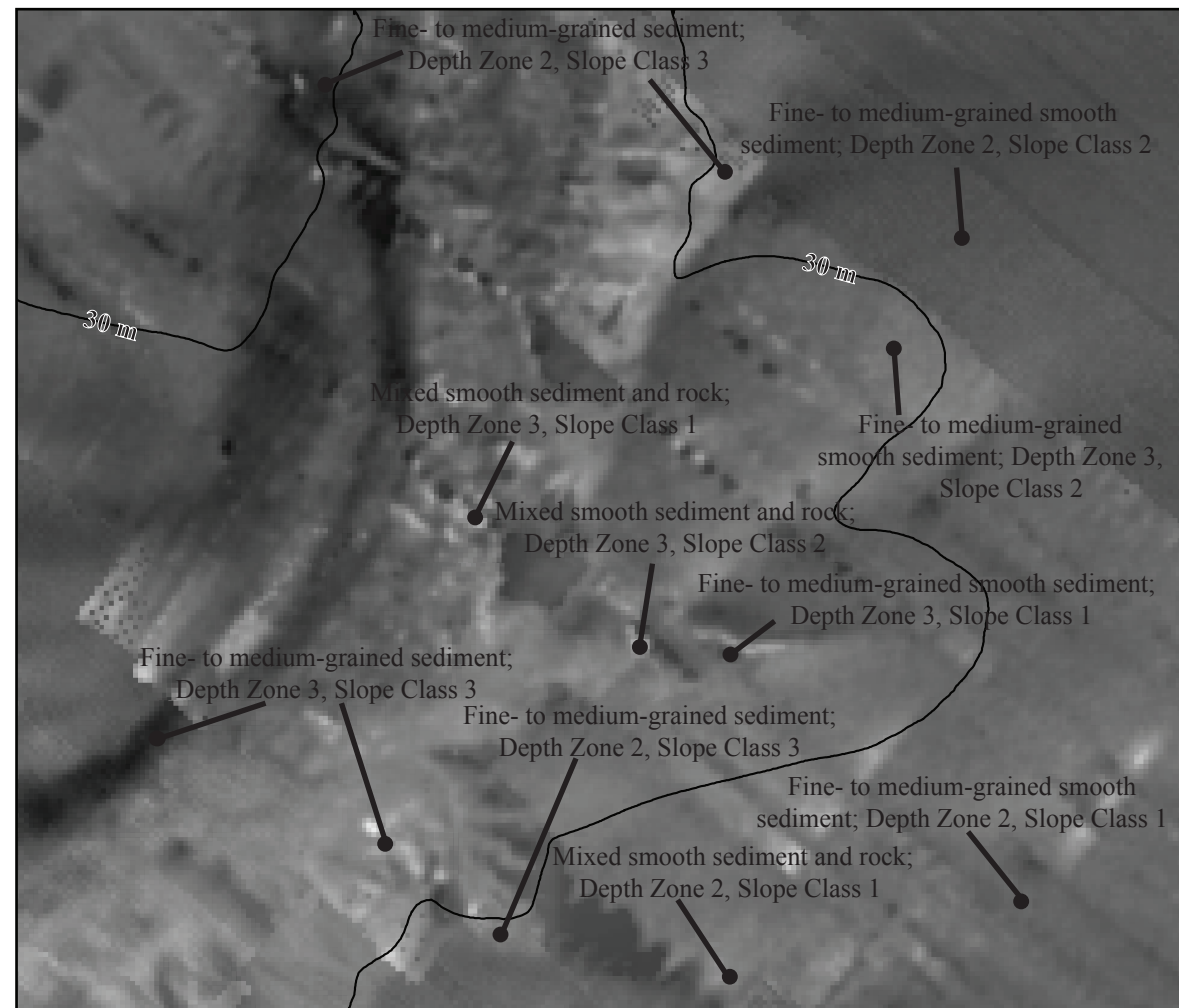
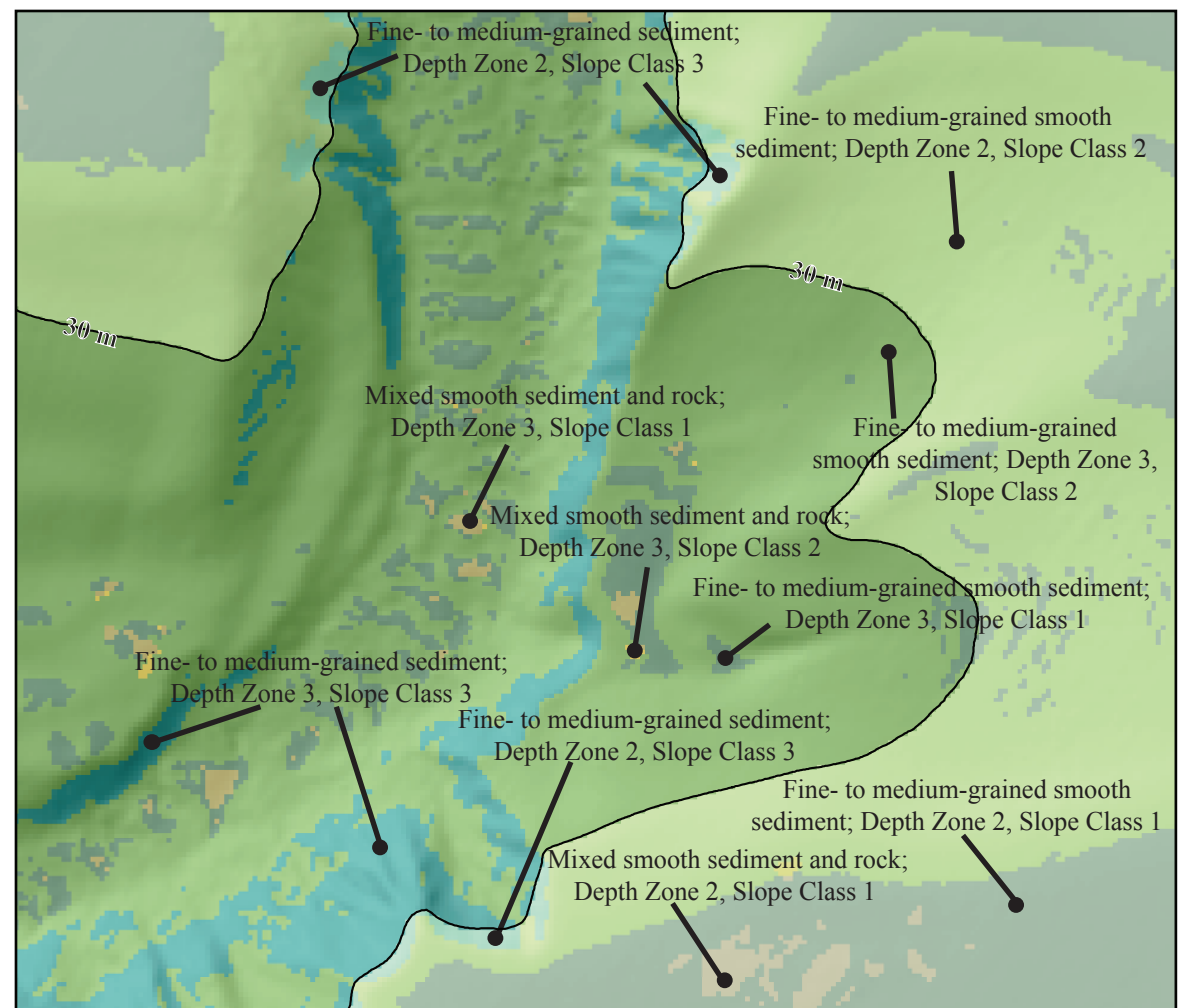
NOT INTENDED FOR NAVIGATIONAL USE

Seafloor Character, Hueneme Canyon and Vicinity, California

By
Evelyne L. Phillips and Guy R. Cochrane
2012



BOX A



BOX B

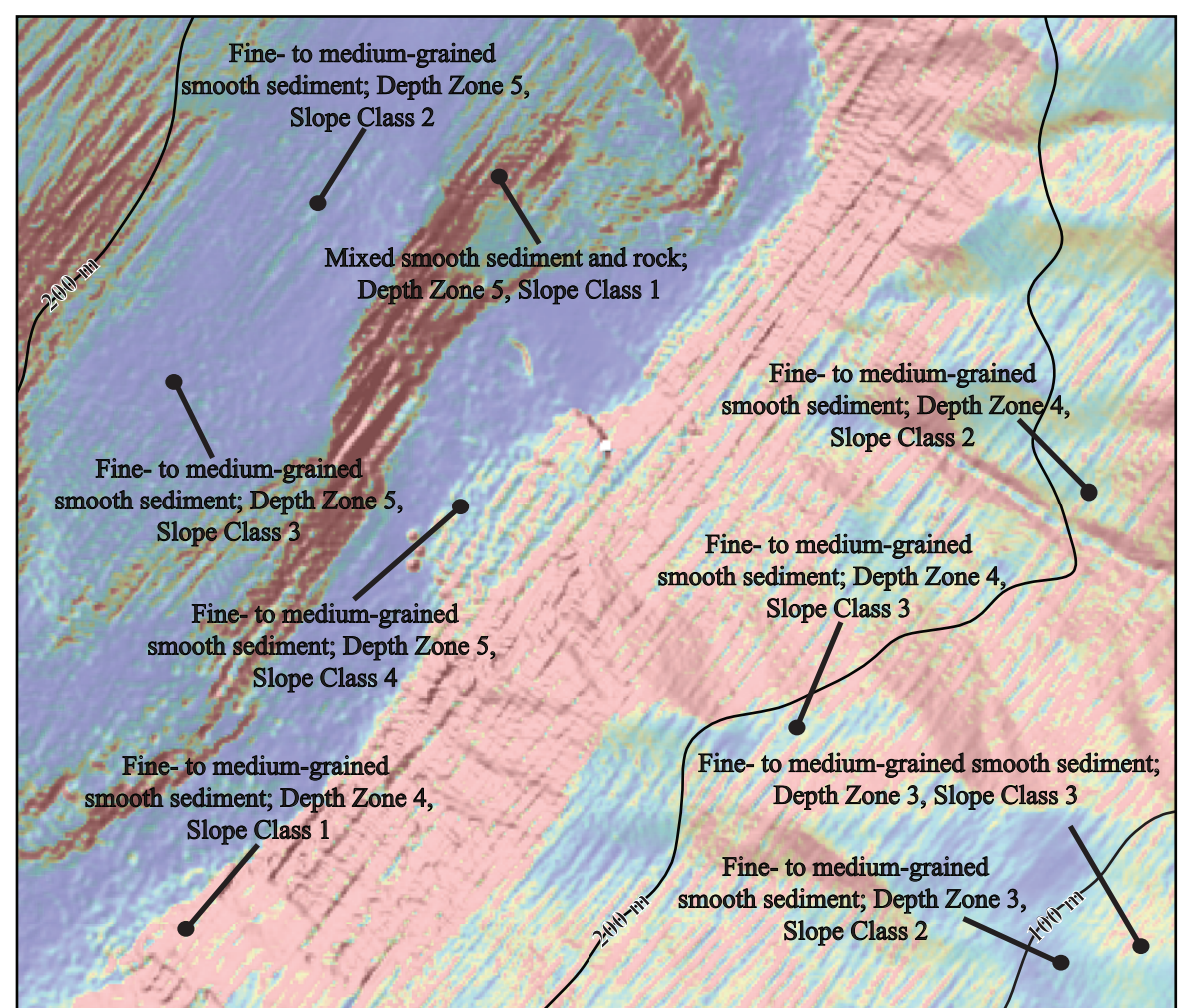
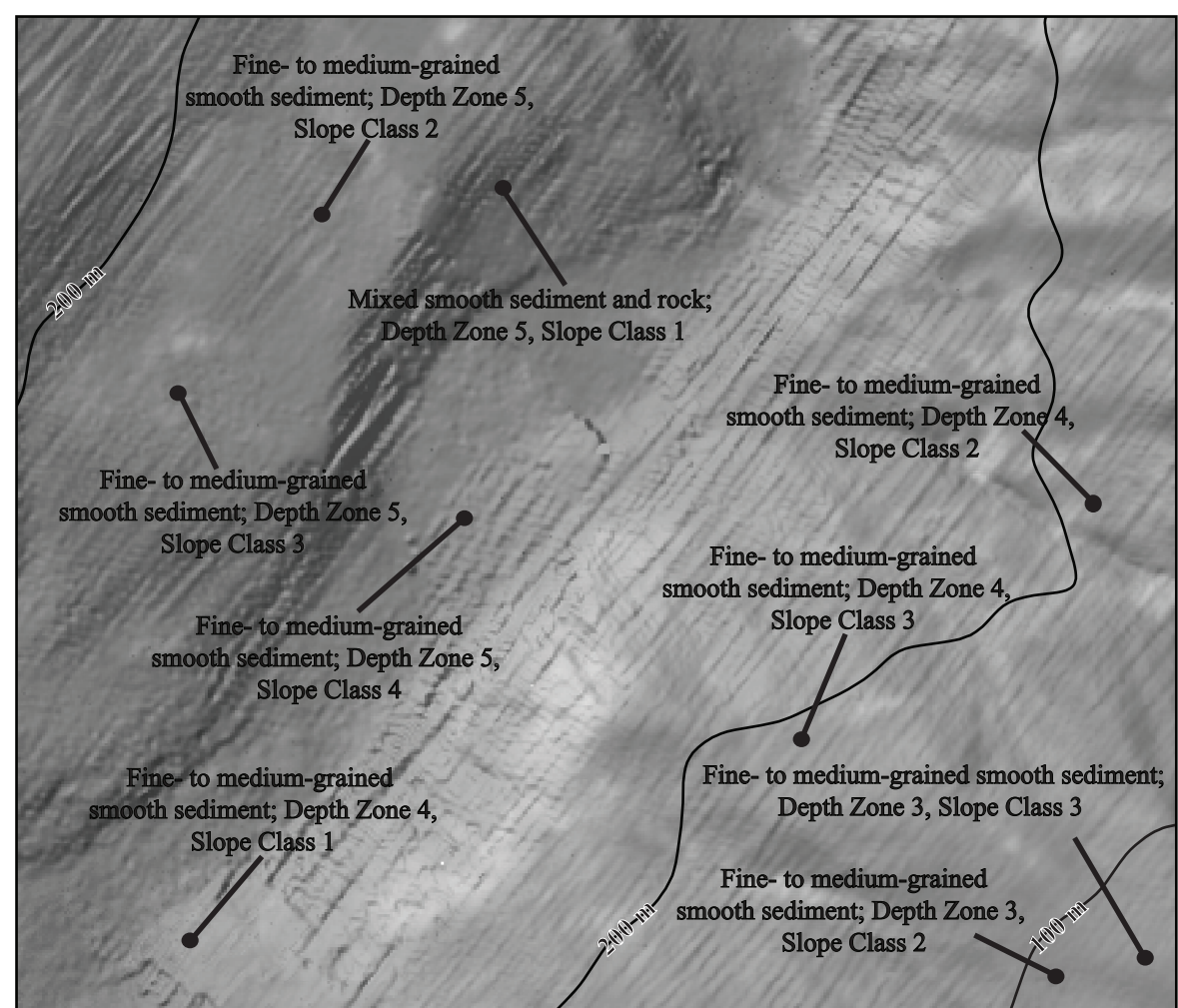
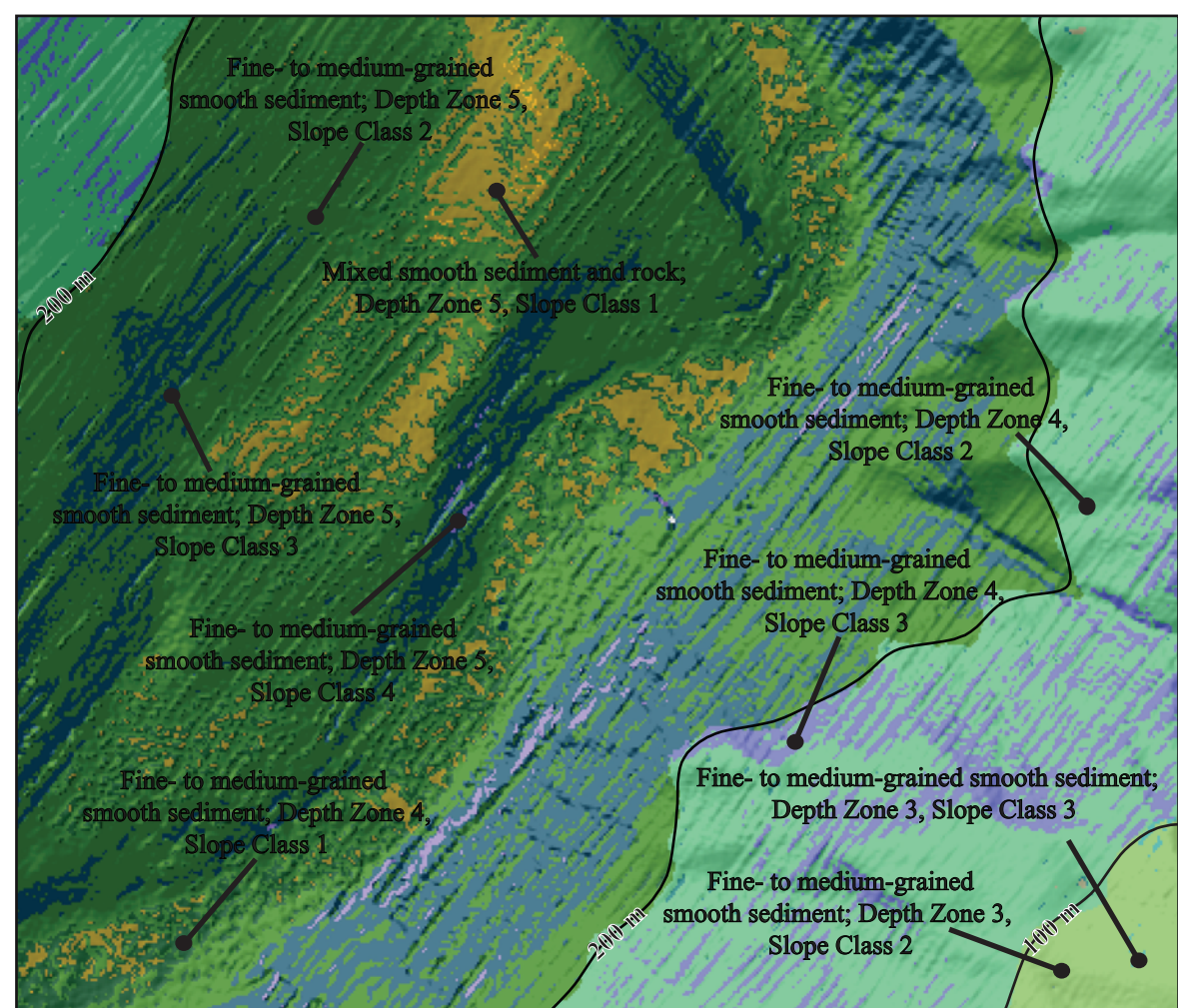
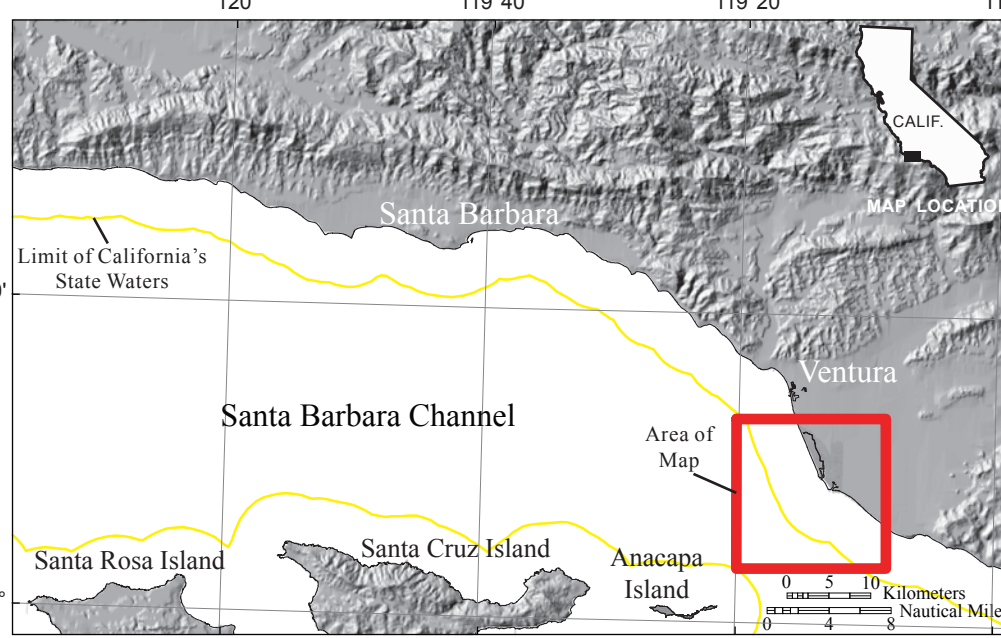


Figure 4. Detailed view of substrate classes mapped in a deeper part of Hueneme Canyon (see Box B, on map, for location). Depth Zone 3 (30 to 100 m); Depth Zone 4 (100 to 200 m); Depth Zone 5 (greater than 200 m); Slope Class 1 (0°–5°); Slope Class 2 (5°–30°); Slope Class 3 (30°–60°); and Slope Class 4 (60°–90°). Fine- to medium-grained smooth sediment is shown in shades of green and blue; mixed smooth sediment and rock is shown in shades of orange. Northeast-southwest-trending texture is artifact of data collection. Bathymetric contours (100 m and 200 m) added for depth reference.

Figure 5. Acoustic backscatter image (see sheet 3) draped over shaded-relief bathymetry (see sheet 2) for same area as Figure 4 (Box B on map). Brighter areas indicate coarse-grained, rough, or hard seafloor; darker areas indicate unconsolidated (loosely packed) sediment. Interpreted substrate classes from Figure 4 included for comparison. Bathymetric contours (100 m and 200 m) added for depth reference.

Figure 6. Rugosity (characterization of roughness derived from bathymetry) draped over shaded-relief bathymetry (see sheet 2) for same area as Figure 4 (Box B on map). Rugosity values are displayed in muted "rainbow" color spectrum that ranges from purple (low rugosity) through green (medium rugosity) to red (high rugosity). Areas of high slope are indicated by high-rugosity values (red); areas of low slope, by medium- to low-rugosity values (green to purple). Interpreted substrate classes from Figure 4 included for comparison. Bathymetric contours (100 m and 200 m) added for depth reference.



DISCUSSION

This seafloor character map of Hueneme Canyon and vicinity in southern California was produced using video-superimposed, maximum-likelihood classification of the bathymetry and backscatter (intensity of return) signals from sonar systems (a summary of the video data collected for the purpose of supervising the classification is shown on sheet 6). Rugosity (a GIS-derived characterization of roughness) and backscatter intensity were used as variants in the classification. The interpreted classifications were then draped over shaded-relief bathymetry (see sheet 2).

The substrate classes mapped in this area have been divided into the following California Marine Life Protection Act depth zones: Depth Zone 1 (intertidal to 30 m), Depth Zone 2 (30 to 100 m), Depth Zone 3 (100 to 200 m), and Depth Zone 4 (greater than 200 m). Depth Zone 1 (intertidal) is not present in this map area. In addition, the following slope classes are represented on this map (California Marine Ecological Classification Standard slope zones are shown in parentheses): Slope Class 1, 0° to 5° (flat); Slope Class 2, 5° to 30° (sloping); Slope Class 3, 30° to 60° (steeply sloping); and Slope Class 4, 60° to 90° (vertical). Fine- to medium-grained smooth sediment makes up 99.0 percent of the map area (139.8 km²); 83.5 km² is in Depth Zone 2, 34.9 km² is in Depth Zone 3, 12.0 km² is in Depth Zone 4, and 9.5 km² is in Depth Zone 5. Mixed smooth sediment and rock (sediment typically forming a veneer over bedrock, or rock outcrops having little to no relief) makes up 1.0 percent of the map area (1.5 km²); 0.1 km² is in Depth Zone 2, 0.5 km² is in Depth Zone 3, 0.4 km² is in Depth Zone 4; and 0.5 km² is in Depth Zone 5. Rock and boulder, rugose (rock and boulder outcrops having high surficial complexity), which makes up less than 0.1 percent (<0.1 km²) of the map area, is present only in Depth Zone 2. Anthropogenic material (a pipe), which makes up less than 0.1 percent (<0.1 km²) of the map area, is present only in Depth Zone 2 (table 1).

Table 1. Coverage of classified seafloor, in square kilometers (sq km) and percent of total area, broken into California Marine Life Protection Act Depth Zones 2, 3, 4, and 5.

	Total		Depth Zone 2 (water depth 0–30 m)		Depth Zone 3 (water depth 30–100 m)		Depth Zone 4 (water depth 100–200 m)		Depth Zone 5 (water depth >200 m)	
	percent of total	sq km	percent of total	sq km	percent of total	sq km	percent of total	sq km	percent of total	sq km
Fine- to medium-grained smooth sediment	99.0	139.8	59.1	83.5	24.7	34.9	8.5	12.0	6.7	9.5
Mixed smooth sediment and rock	1.0	1.5	0.1	0.1	0.4	0.5	0.3	0.4	0.3	0.5
Rock and boulder, rugose	<0.1	<0.1	<0.1	<0.1	0.0	0.0	0.0	0.0	0.0	0.0
Anthropogenic (pipe)	<0.1	<0.1	<0.1	<0.1	0.0	0.0	0.0	0.0	0.0	0.0

