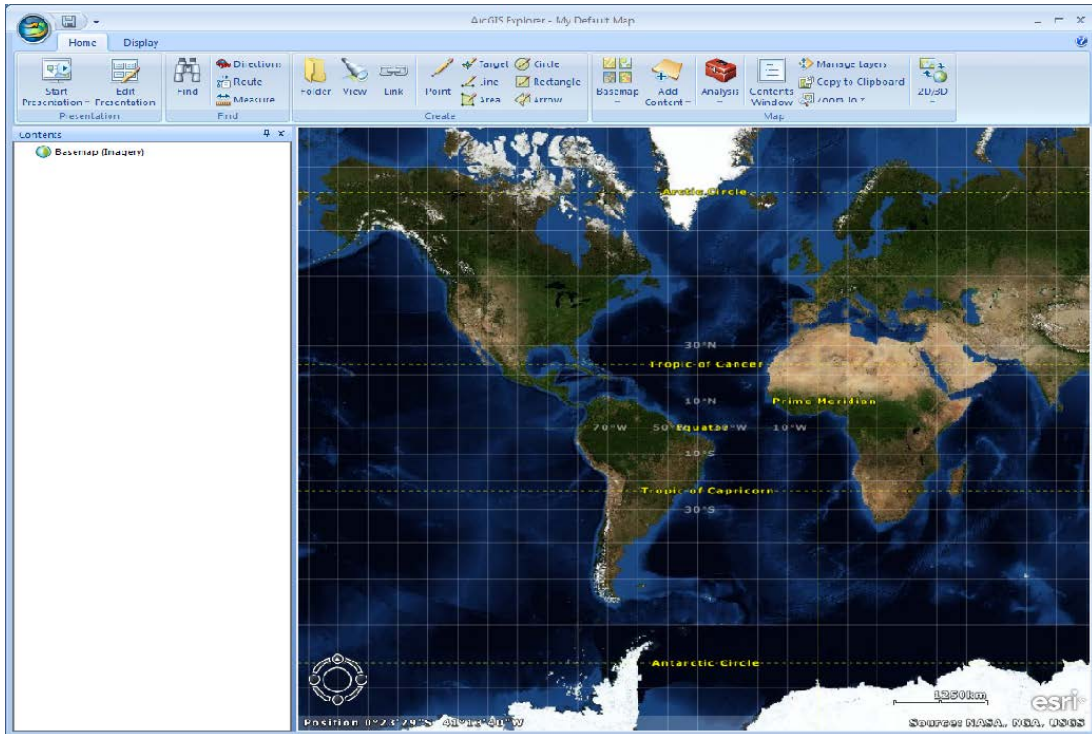


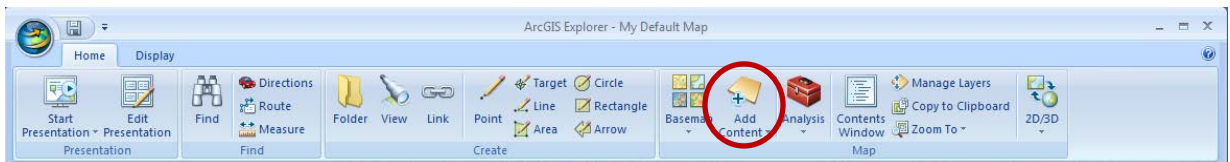
Contour and Bedrock-Surface Viewer Guide

By Gillian M. Fairchild

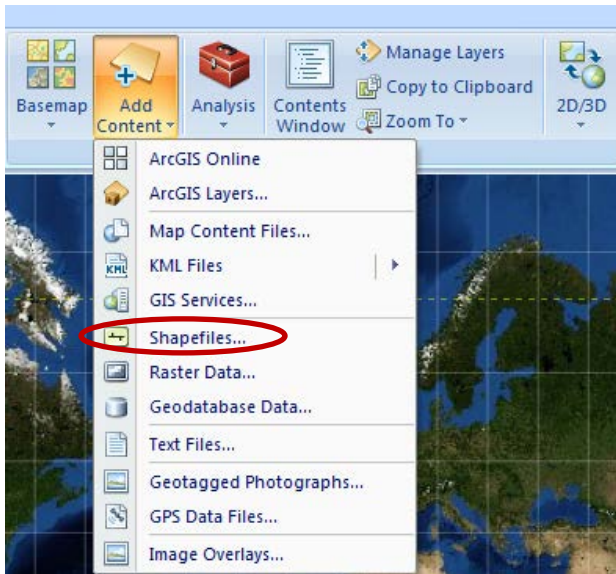
1. If you don't have a GIS, get a current version of ESRI ArcGIS Explorer¹ at the following Web address: <http://www.esri.com/software/arcgis/explorer/download>
2. Install ArcGIS Explorer on your computer, and then open the program. An interface with a map of the world will appear:



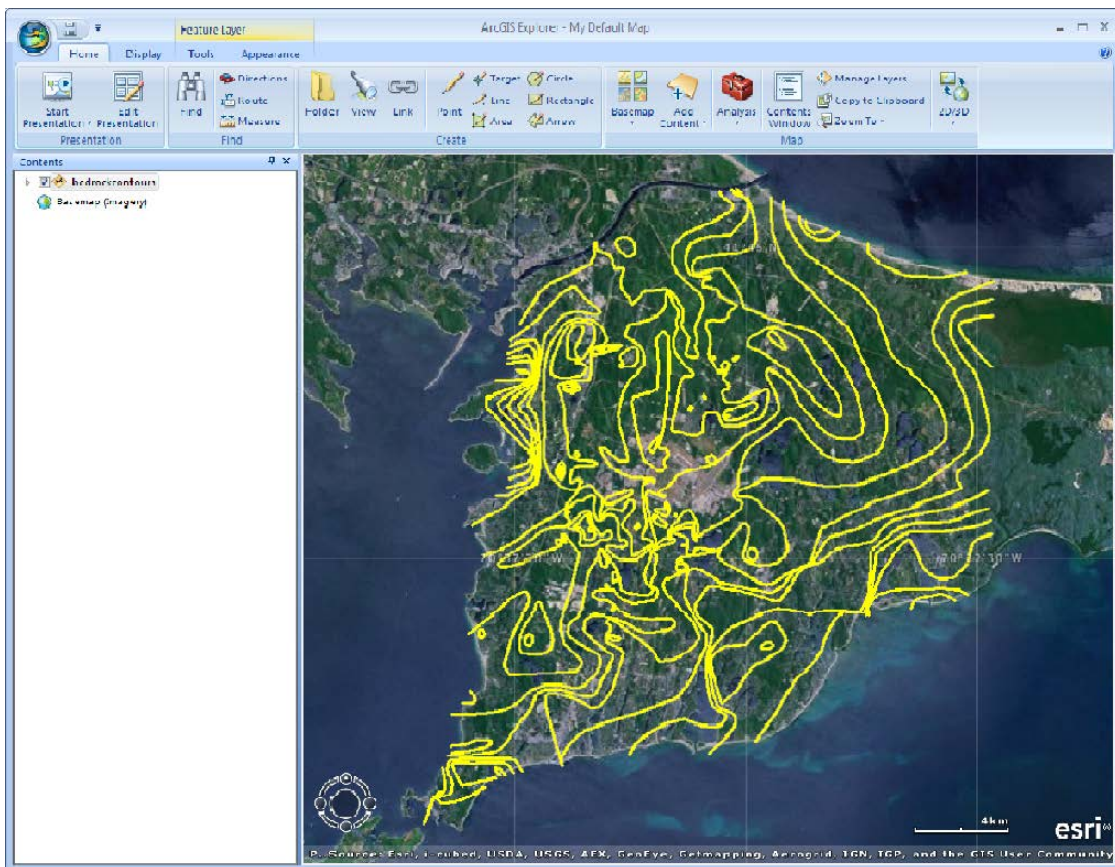
3. Download the GIS layer folder from the Web site or insert the CD into the drive.
4. On the **Home** tab in ArcGIS Explorer, click on **Add Content**.



5. Click on **Shapefiles...**

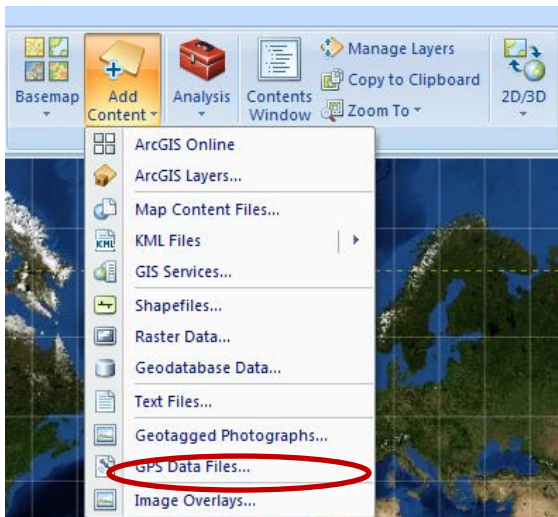


- An Explorer window will open. Navigate to the directory on your computer or on the CD with the GIS layers. Select the shapefile you wish to add and click on **Open**. The program will automatically zoom to the study area on western Cape Cod.

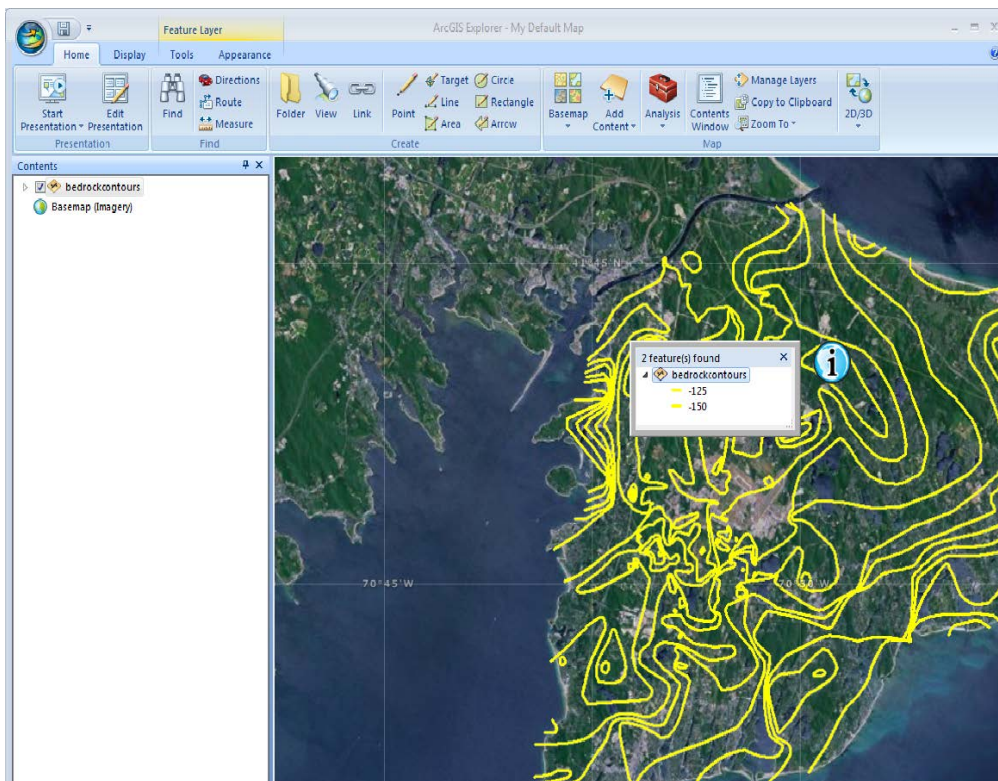


- The three contour layers are shapefiles: **ashumetpondcontours.shp**, **snakepondcontours.shp**, and **bedrockcontours.shp**.

- To add the raster image of the bedrock surface, click on **Add Content**, and then click on **Raster Data**. Navigate to the folder with the GIS layers, click on **wcc.img**, and click on **Open**.



- Once the layers you wish to view are added, you can explore the area by zooming in and out, dragging the area around, and clicking on features to get information about the feature in a popup window.



NOTE: ArcGIS Explorer is a viewing tool only. More sophisticated GIS tools such as ESRI ArcMap¹ are required to load the shapefiles and raster image into a map.

¹ Product names are for identification purposes only, and do not imply endorsement of the product by the U.S. Geological Survey.