

The onshore-area image was generated by applying the same illumination (azimuth of 300° and from 45° above the horizon) to the coastal airborne topographic-lidar data, as well as to publicly available, 3-m-resolution, interferometric synthetic aperture radar (iSAR) data, available from NOAA Coastal Service Center's Digital Coast, at <http://csc-s-maps-g-csc.noaa.gov/dataviewer/viewer.html> (last accessed April 5, 2011).

Amount of illumination

Illuminated (facing false sun)

In shadow (facing away from false sun)

Direction of illumination from false sun—Position of false sun is at 300° azimuth, 45° above horizon [arrow included in explanation for illustration purposes only; not shown on map]

Area of “no data”—Areas near shoreline not mapped owing to insufficient high-resolution seafloor mapping data; areas beyond 3 nautical-mile limit of California’s State Waters were not mapped as part of California Seafloor Mapping Program

3-nautical-mile limit of California’s State Waters

Bathymetric contour (in meters)—Derived from modified 10-m-resolution bathymetry grid

Contour interval: 10 m

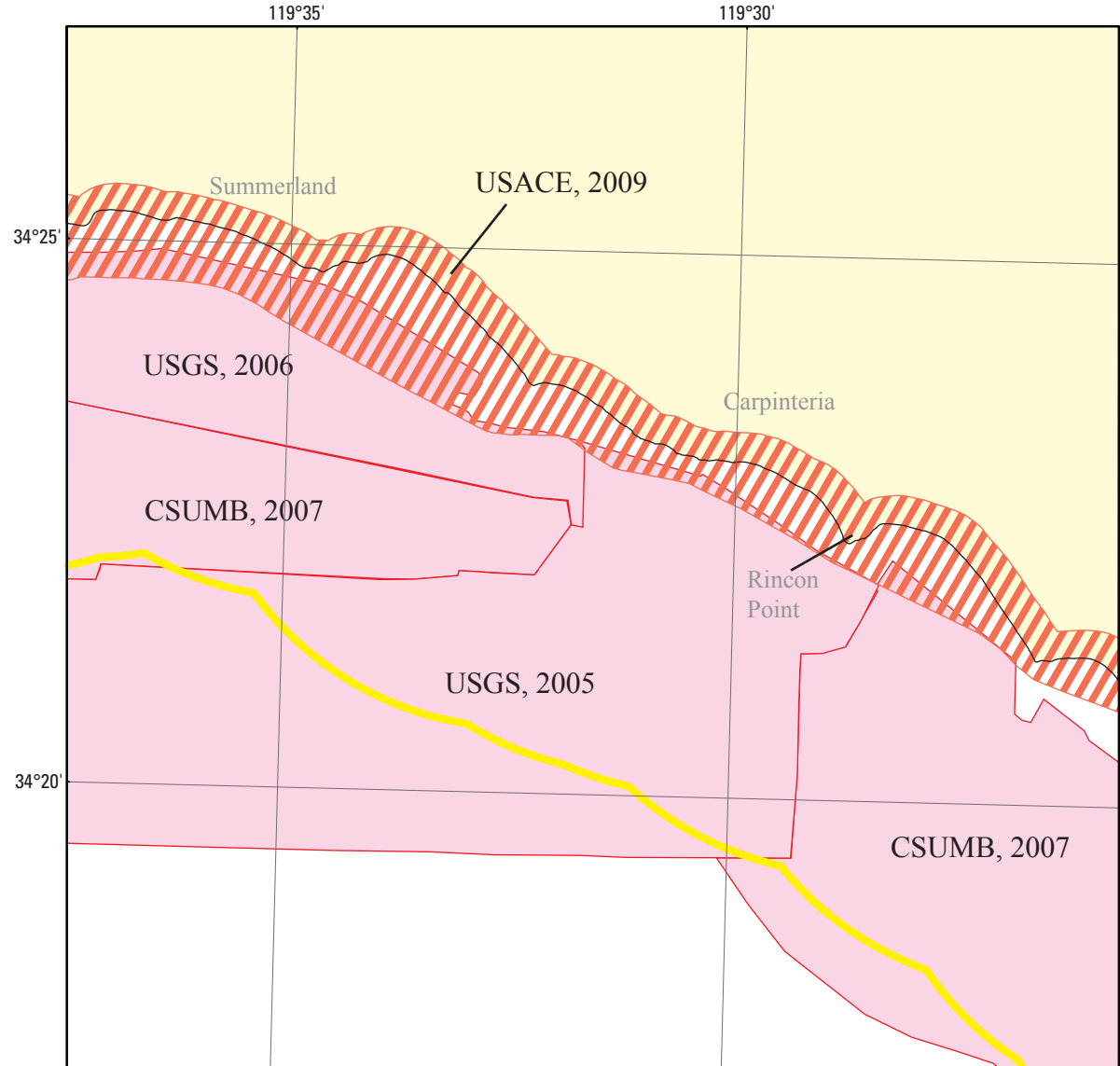
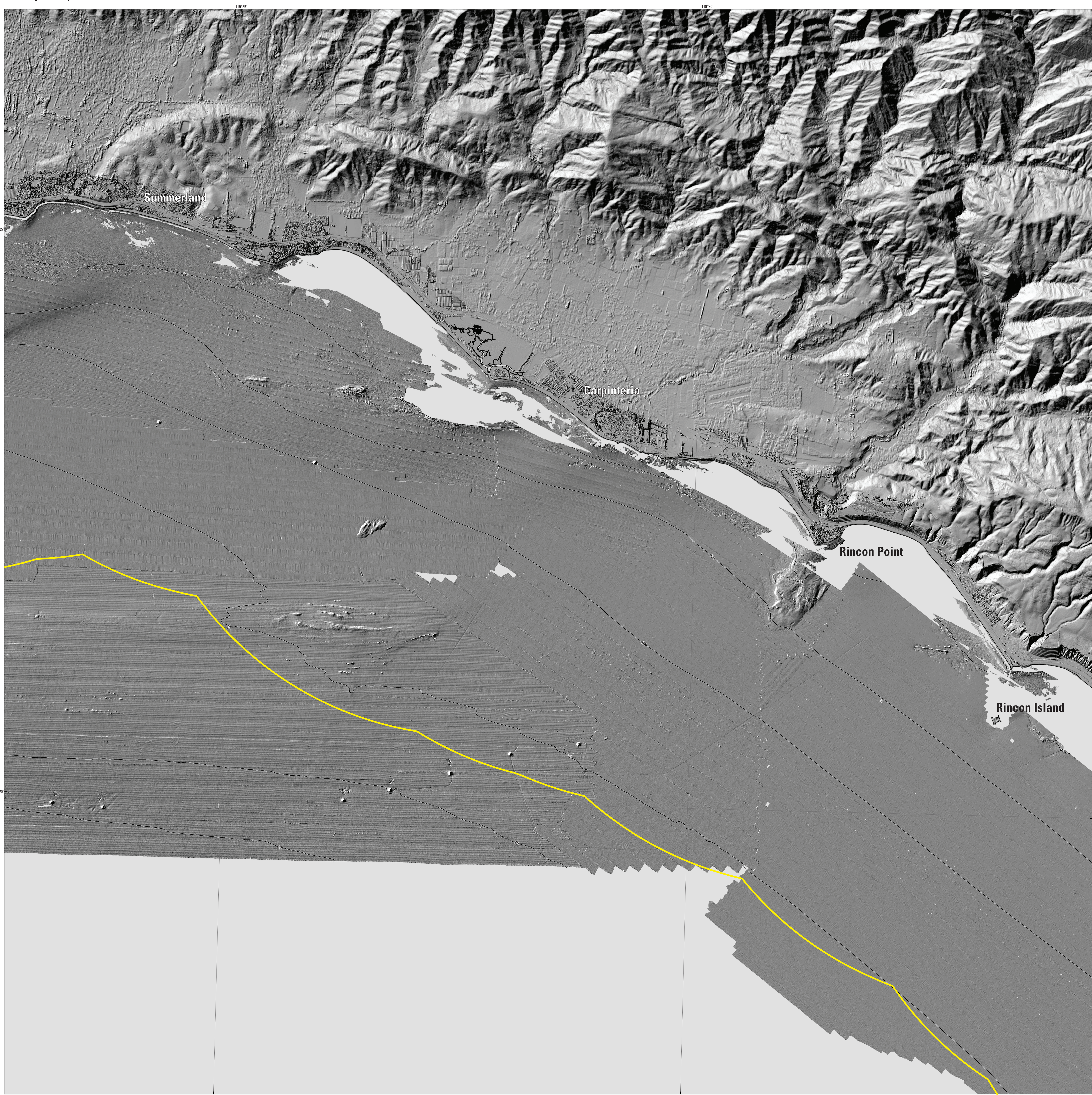


Figure 1. Map showing areas of multibeam-echosounder and bathymetric-sidescan surveys (pink shading), bathymetric and topographic-lidar surveys (orange diagonal lines), and publicly available interferometric synthetic aperture radar (iSAR) topography (yellow shading). Also shown are data-collecting agencies (CSUMB, California State University, Monterey Bay, Seafloor Mapping Lab; USACE, U.S. Army Corps of Engineers; USGS, U.S. Geological Survey) and dates of surveys if known.



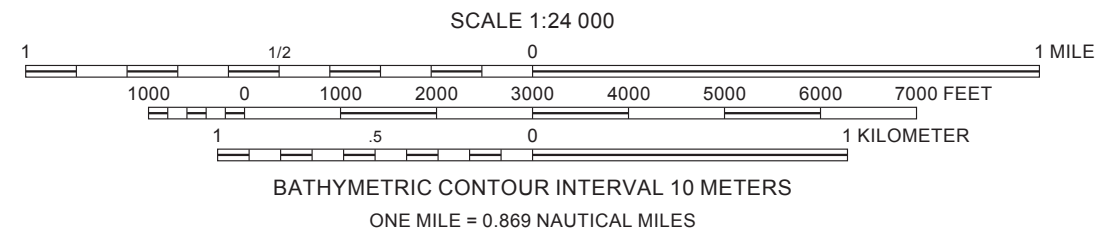
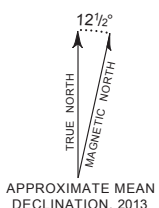
Digital files available at: <http://www.govsiv.org/206/>

Suggested Citation: Kivick, R.G., Darmstad, P., Phillips, E.L., and Cochrane, G.R., 2015, Shaded-relief bathymetry, Offshore of Carpinteria marine area, California. Sheet 2 in Johnson, S.Y., Dornell, P., Cochrane, G.R., Golden, N.E., Phillips, E.L., Ritchie, A.C., Kivick, R.G., Greene, H.B., Endris, C.A., Seitz, G.G., Silver, R.W., Erdrey, M.D., Wang, F.L., Gutierrez, C.J., Krigaman, L.M., Drake, A.E., and Hart, P.E. (S.Y. Johnson and S.A. Cochrane, eds.), California State Waters May Series—Offshore of Carpinteria, California: U.S. Geological Survey Scientific Investigations Map 3261, <http://pubs.usgs.gov/si/2015/>, 10 sheets, scale 1:24,000, <http://pubs.usgs.gov/si/2015/>.



Onshore elevation data from NOAA Coastal Services Center (data collected by EarthData International in 2002-2003) and from U.S. Army Corps of Engineers (data collected by Fugro Pelagos in 2009). California's State Waters limit from NOAA Office of Coast Survey
Universal Transverse Mercator projection, Zone 11N

NOT INTENDED FOR NAVIGATIONAL USE



Shaded-relief bathymetry by Peter Dartnell, 2011 (data collected by U.S. Geological Survey in 2005 and 2006 and by California State University, Monterey Bay, Seafloor Mapping Lab in 2007). Bathymetric contours by Andrew C. Ritchie, 2011
GIS database and digital cartography by Nadine E. Golden and Eleyne L. Phillips
Edited by Taryn A. Lindquist
Manuscript approved for publication June 13, 2013

By
Rikk G. Kvitek,¹ Peter Dartnell,² Eleyne L. Phillips,² and Guy R. Cochrane²
2013

²U.S. Geological Survey