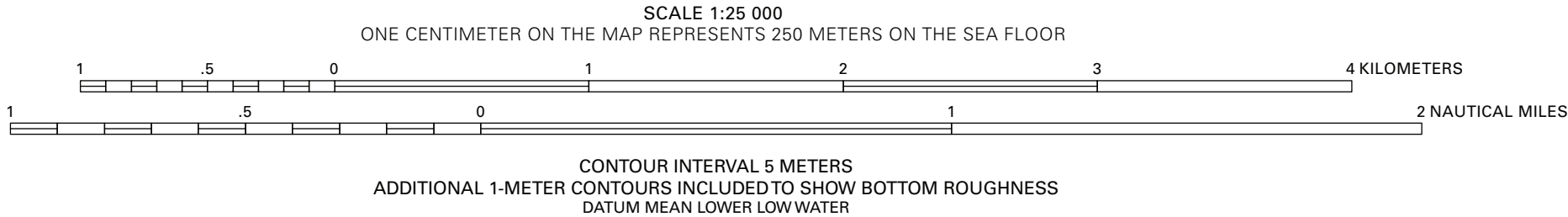
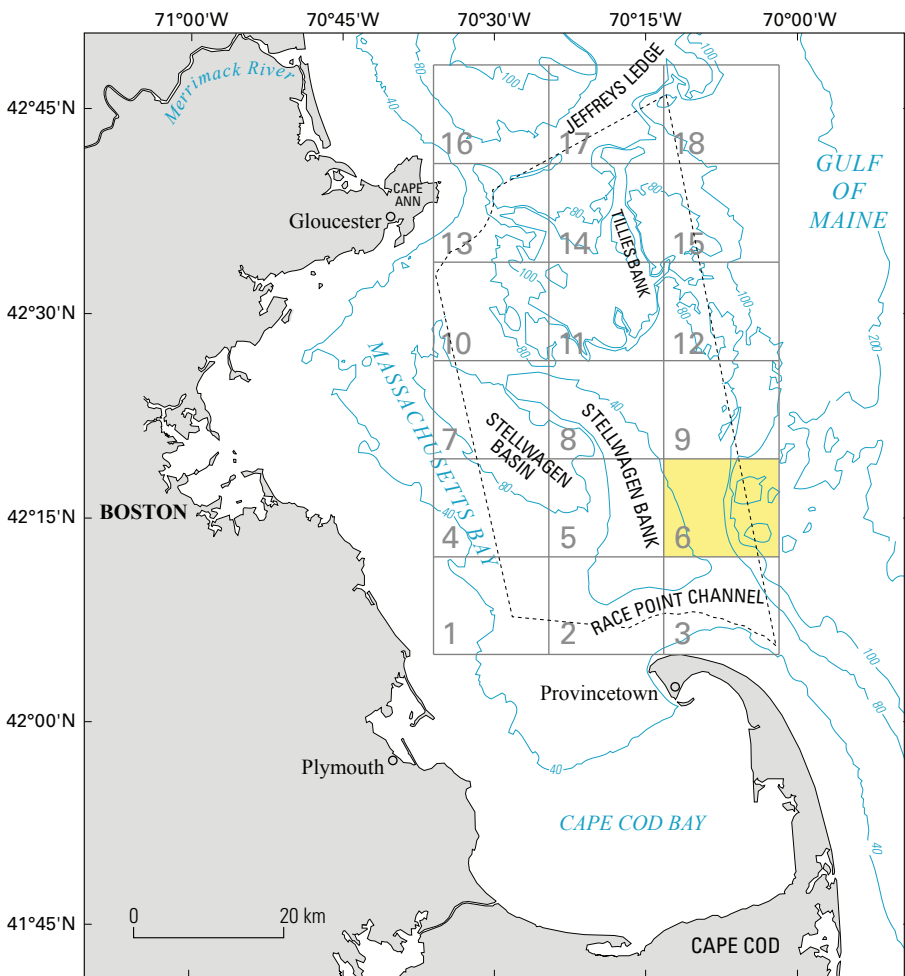


Mercator projection  
Geodetic Reference System 1980, North American Datum of 1983  
Longitude of central meridian 70°13' W; latitude of true scale 41°39' N  
False easting 0 m; false northing 0 m  
This map is not intended for navigational purposes.



- DESCRIPTION OF MAP UNITS**  
[Sediment mobility is based on the presence of sand ripples observed in video and photographic imagery. See Mapping Methods for explanation of topographic contour intervals]
- Mobile sediment**—Rippled sand; equivalent to substrate A1 of Map D
  - Mobile and immobile sediment**—Rippled sand overlying immobile cobble and boulder gravel; equivalent to substrate B of Map D
  - Immobile sediment**—Sand, sand partial veneer on gravel, and muddy sand; equivalent to substrates A2, D1, D2, E, F, G1, and G2 of Map D
  - Boulder ridges <1 m in height**—Equivalent to substrate C of Map D
  - Boulder ridges ≥1 m in height**—Equivalent to substrate C of Map D



Location Map.—Shows quadrangle 6 (highlighted in yellow). Stellwagen Bank National Marine Sanctuary boundary is shown as a dashed line. Bathymetric contours are labeled in meters.

## Map E.—Sediment Mobility

Seabed Maps Showing Topography, Ruggedness, Backscatter Intensity, Sediment Mobility, and the Distribution of Geologic Substrates in Quadrangle 6 of the Stellwagen Bank National Marine Sanctuary Region Offshore of Boston, Massachusetts

By  
Page C. Valentine and Leslie B. Gallea  
2015

Any use of trade, firm, or product names is for descriptive purposes only and does not imply endorsement by the U.S. Government.  
Digital file available at <https://doi.org/10.3133/SI3341>  
Suggested citation: Valentine, P.C., and Gallea, L.B., 2015, Sediment mobility, map E of Seabed maps showing topography, ruggedness, backscatter intensity, sediment mobility, and the distribution of geologic substrates in quadrangle 6 of the Stellwagen Bank National Marine Sanctuary region offshore of Boston, Massachusetts: U.S. Geological Survey Scientific Investigations Map 3341, scale 1:25,000, <https://doi.org/10.3133/SI3341>.

ISSN 2228-132X (online)  
<https://doi.org/10.3133/SI3341>