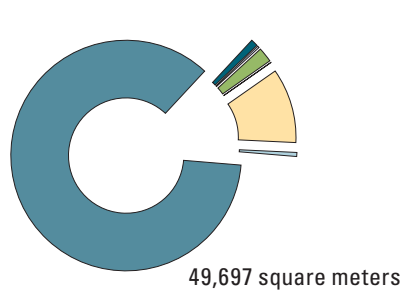
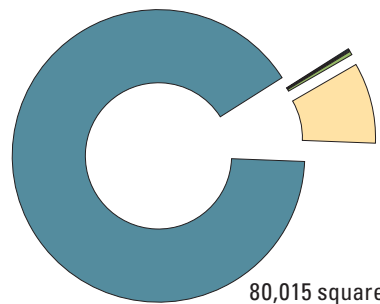
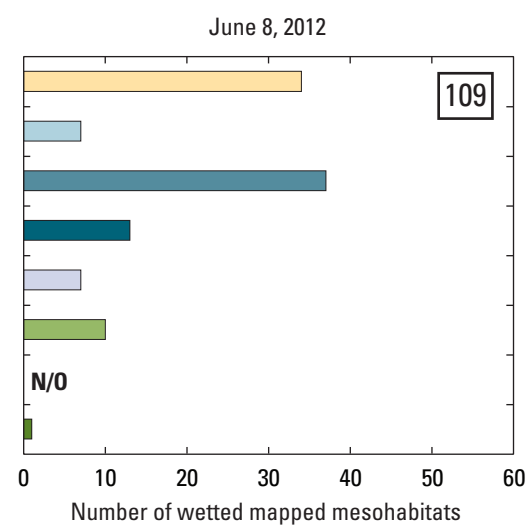
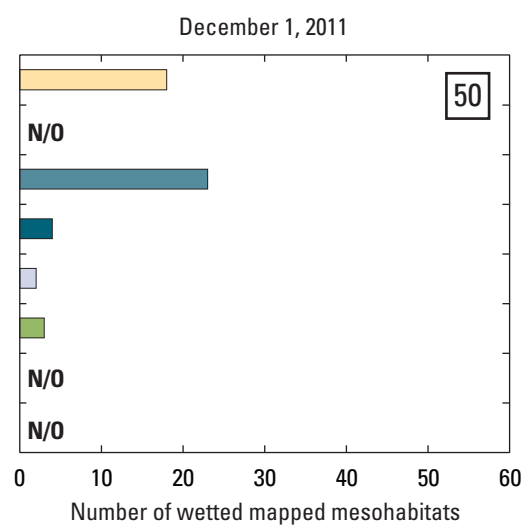
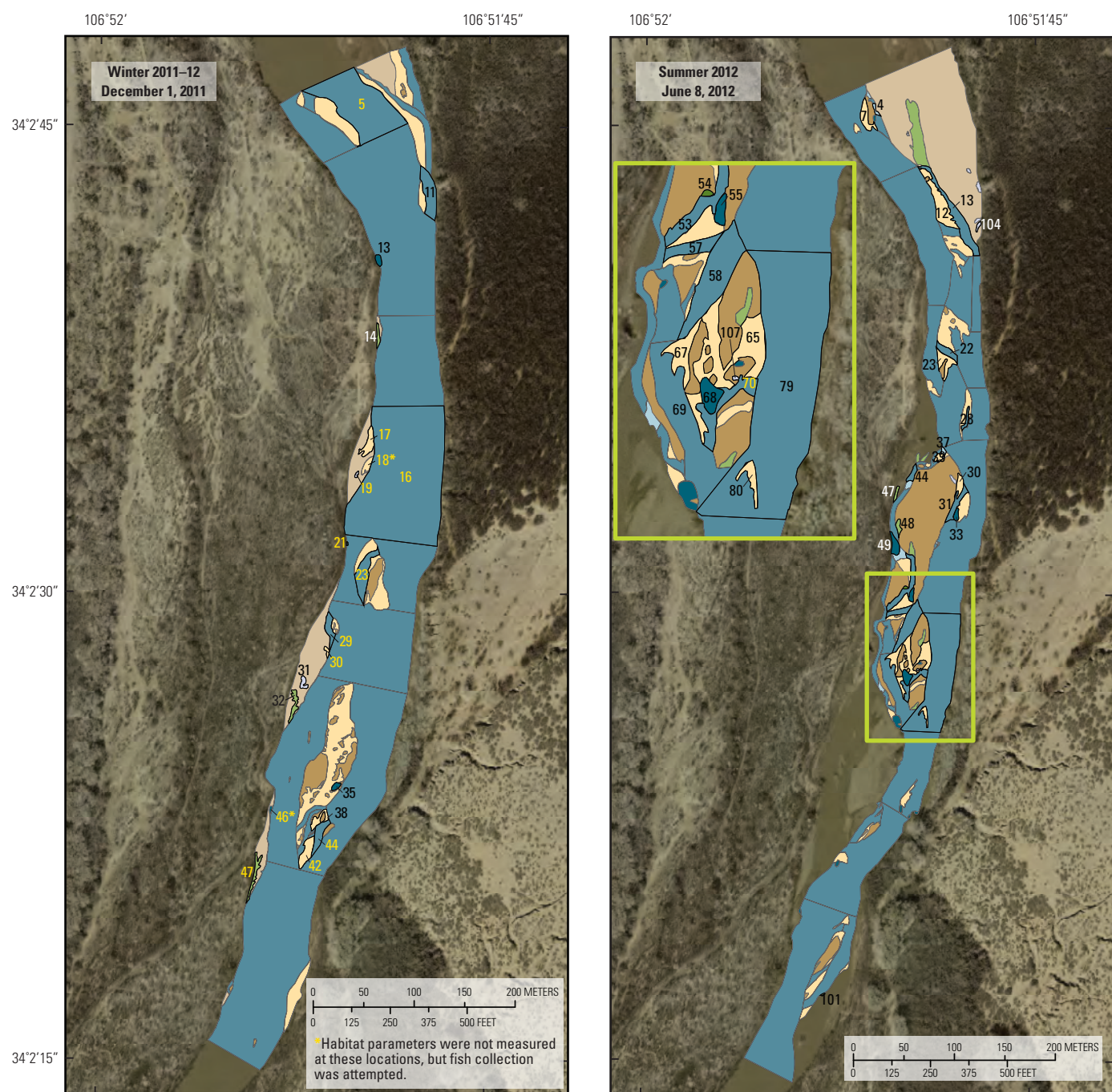
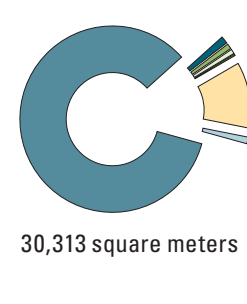
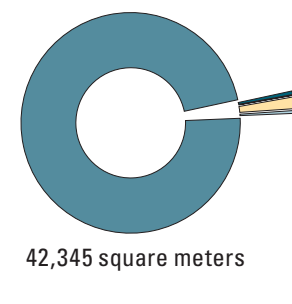
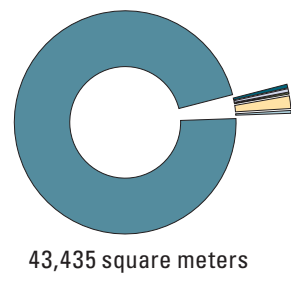
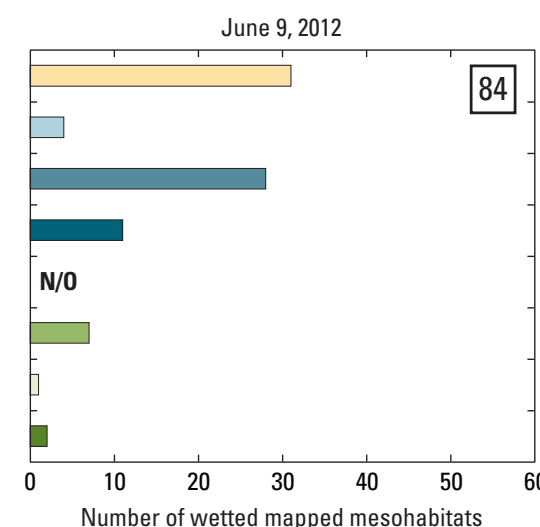
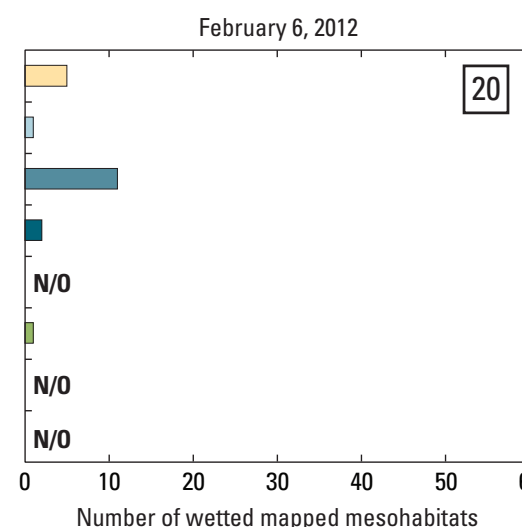
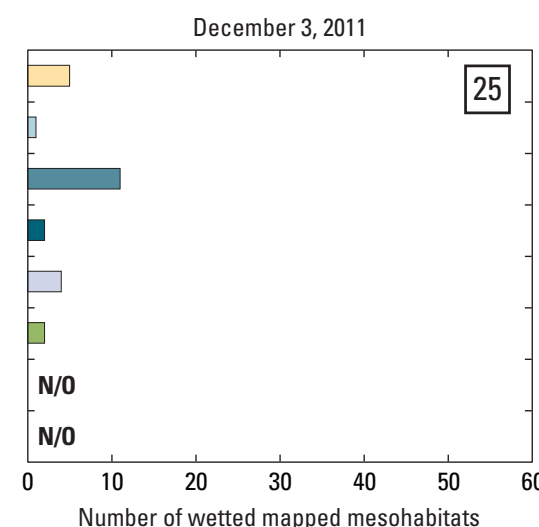
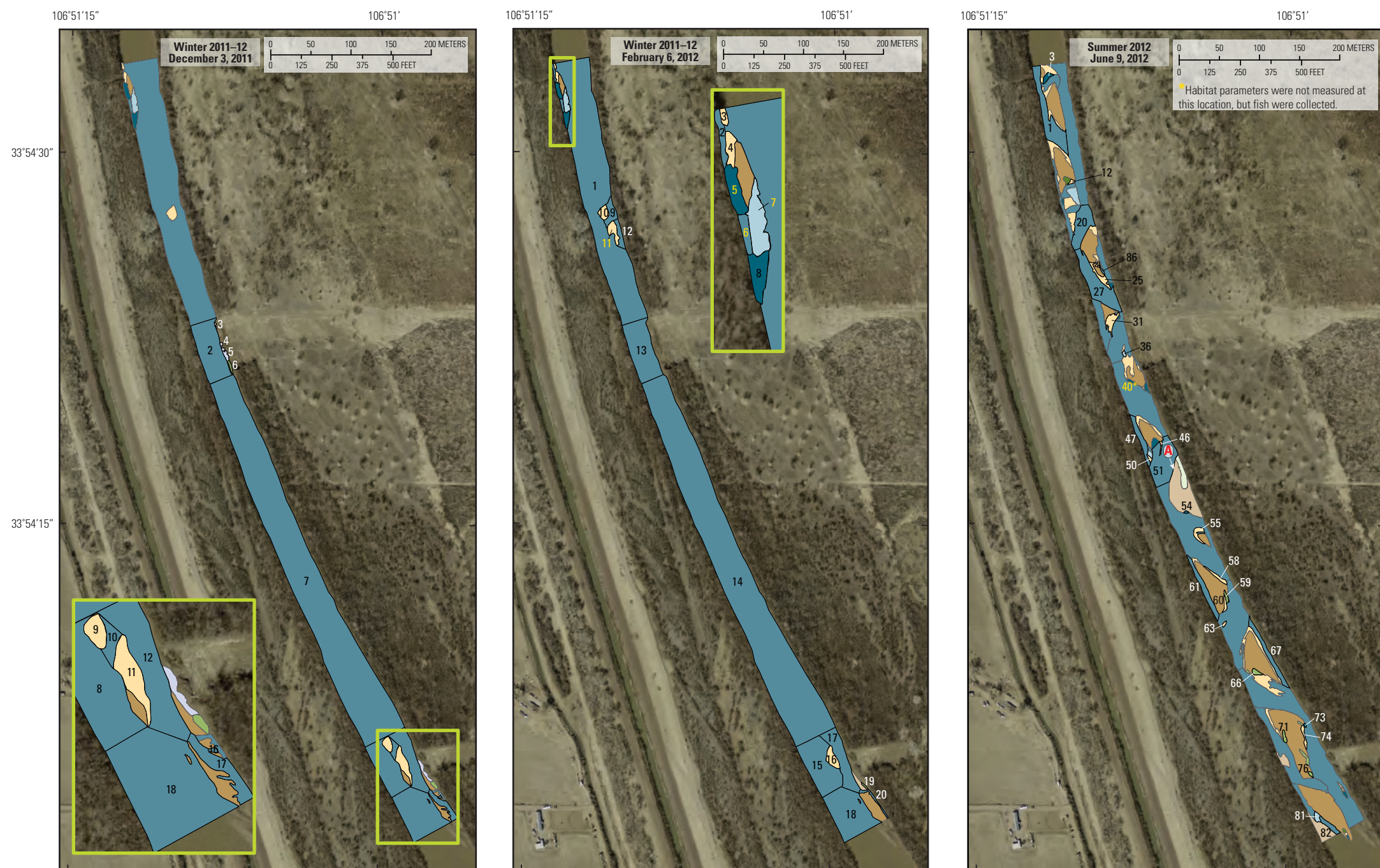


Arroyo del Tajo Sampling Site



Seining by U.S. Fish and Wildlife personnel at unknown location within the Arroyo del Tajo sampling site. Photograph by U.S. Geological Survey on June 9, 2012.

San Pedro Sampling Site

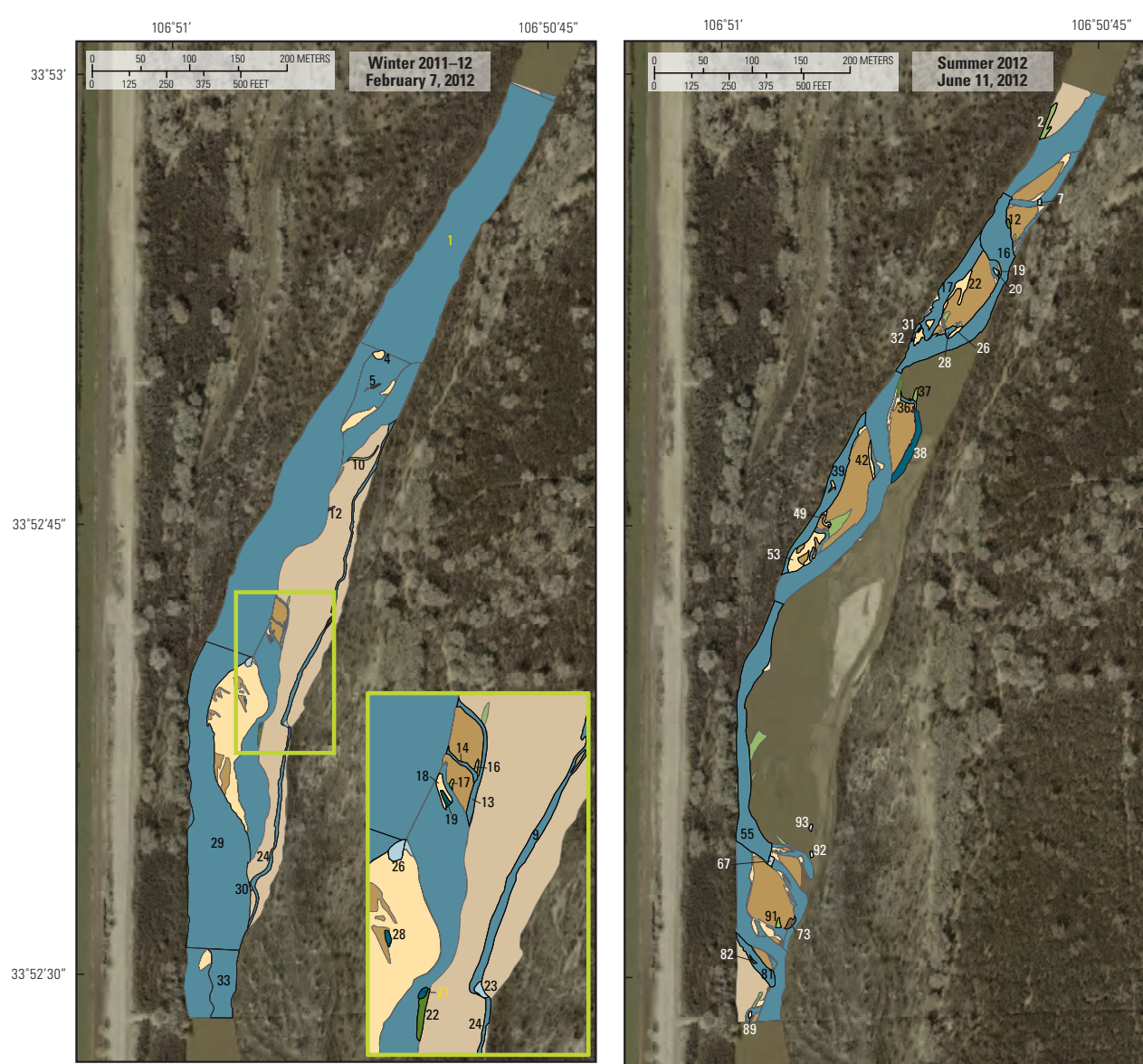


Pumps transferring water from the conveyance channel to the main channel of the Rio Grande near San Pedro; the photograph was taken outside the mapped area shown. Photograph by Daniel K. Pearson, U.S. Geological Survey, June 9, 2012.

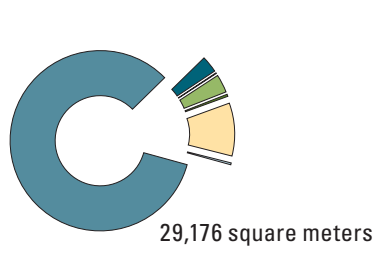
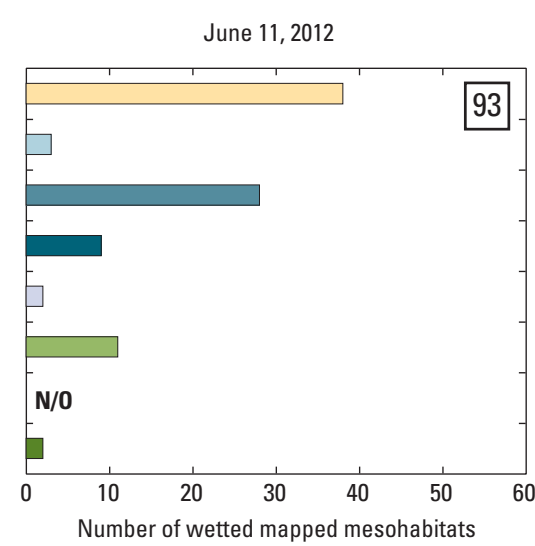
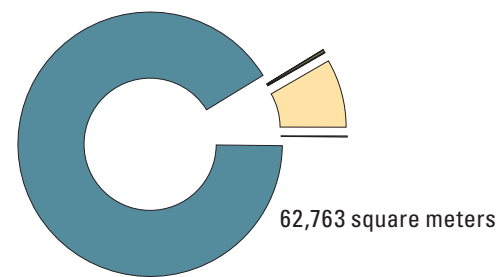
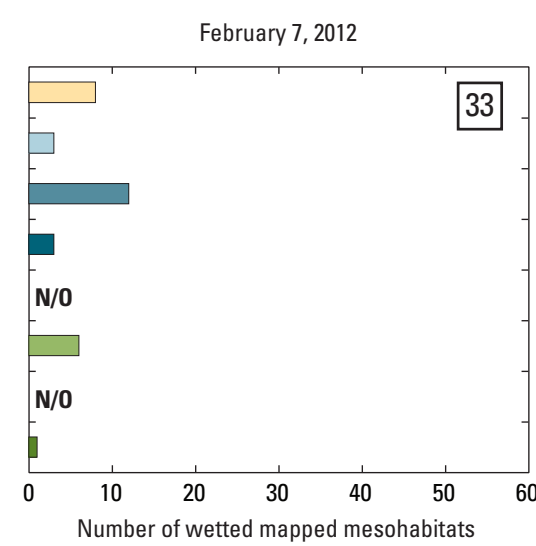


Facing downstream at midchannel and approximately mid-reach in the San Pedro sampling site. Photograph by Daniel K. Pearson, U.S. Geological Survey, June 9, 2012.

Bosque del Apache I Sampling Site



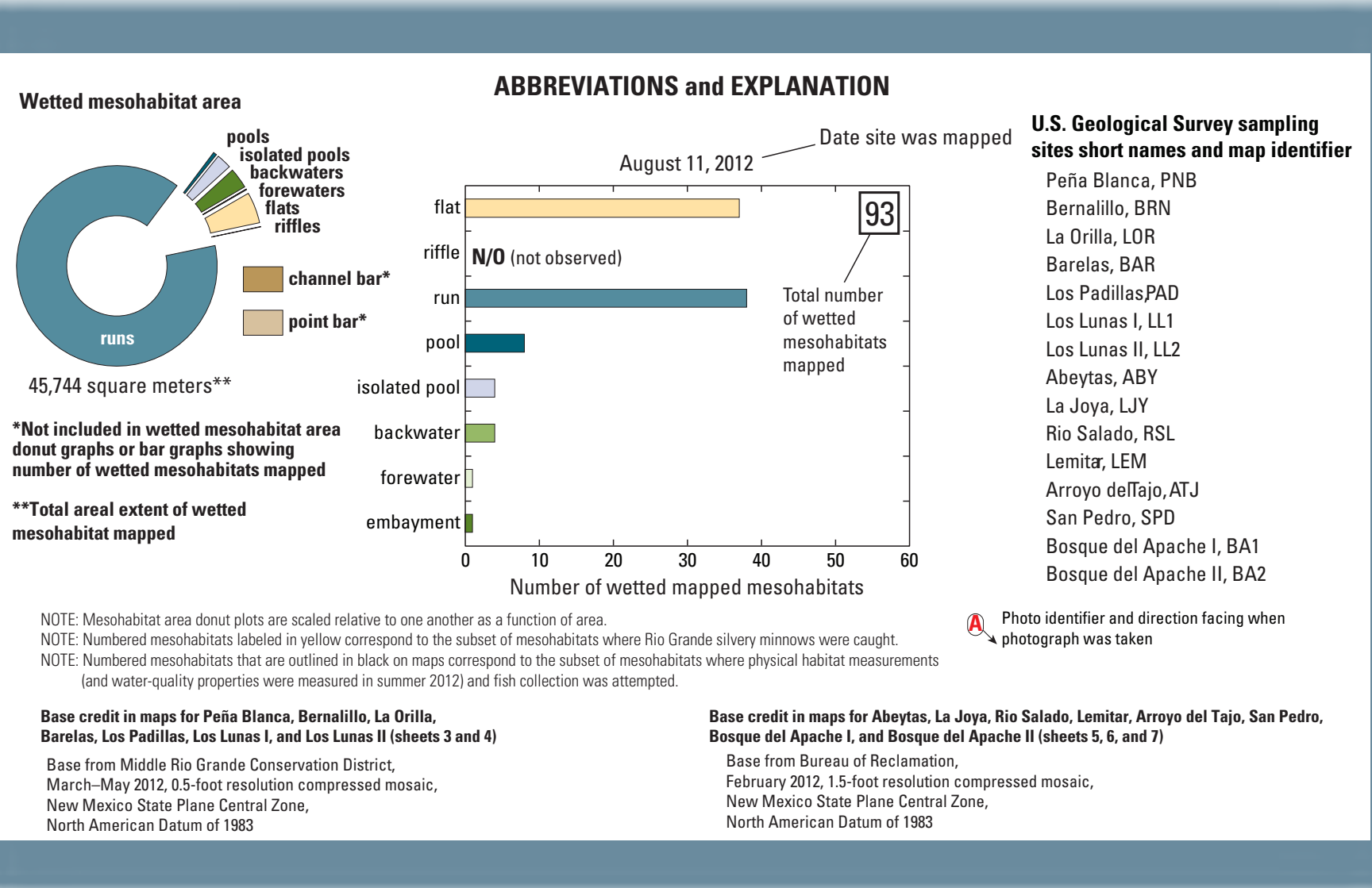
Looking southwest toward the upstream boundary of the Bosque del Apache I sampling site. Photograph taken by Daniel K. Pearson, U.S. Geological Survey, on September 28, 2011, when river bed was nearly dry and diversions for agriculture were still taking place.



Delineation of secondary channel within point bar. Location where photo was taken is not shown on map because the mapping effort at the Bosque del Apache I sampling site on December 7, 2011, could not be completed because snow and ice made determination and delineation of mesohabitat types problematic. Photograph by Daniel K. Pearson, U.S. Geological Survey, December 7, 2011.



Water being transferred from the conveyance channel to the main channel of the Rio Grande approximately 700 feet downstream from the Bosque del Apache I site. Photograph by Daniel K. Pearson, U.S. Geological Survey.



## Fish Assemblage Composition and Mapped Mesohabitat Features Over a Range of Streamflows in the Middle Rio Grande, New Mexico, Winter 2011–12, Summer 2012

By  
Daniel K. Pearson, Christopher L. Braun, and J. Bruce Moring  
2015

Any use of trade, product, or firm names in this publication is for descriptive purposes only and does not imply endorsement by the U.S. Government.  
For sale by U.S. Geological Survey, Information Services, Box 25286, Federal Center, Denver, CO 80225, 1-888-ASK-USGS  
Digital files available at <http://dx.doi.org/10.3133/sim3350>  
Suggested citation: Pearson, D.K., Braun, C.L., and Moring, J.B., 2015, Fish assemblage composition and mapped mesohabitat features over a range of streamflows in the Middle Rio Grande, New Mexico, winter 2011–12, summer 2012: U.S. Geological Survey Scientific Investigations Map 3350, 7 sheets, <http://dx.doi.org/10.3133/sim3350>.

ISSN 2229-1311 (print)  
ISSN 2229-132X (online)  
<http://dx.doi.org/10.3133/sim3350>

