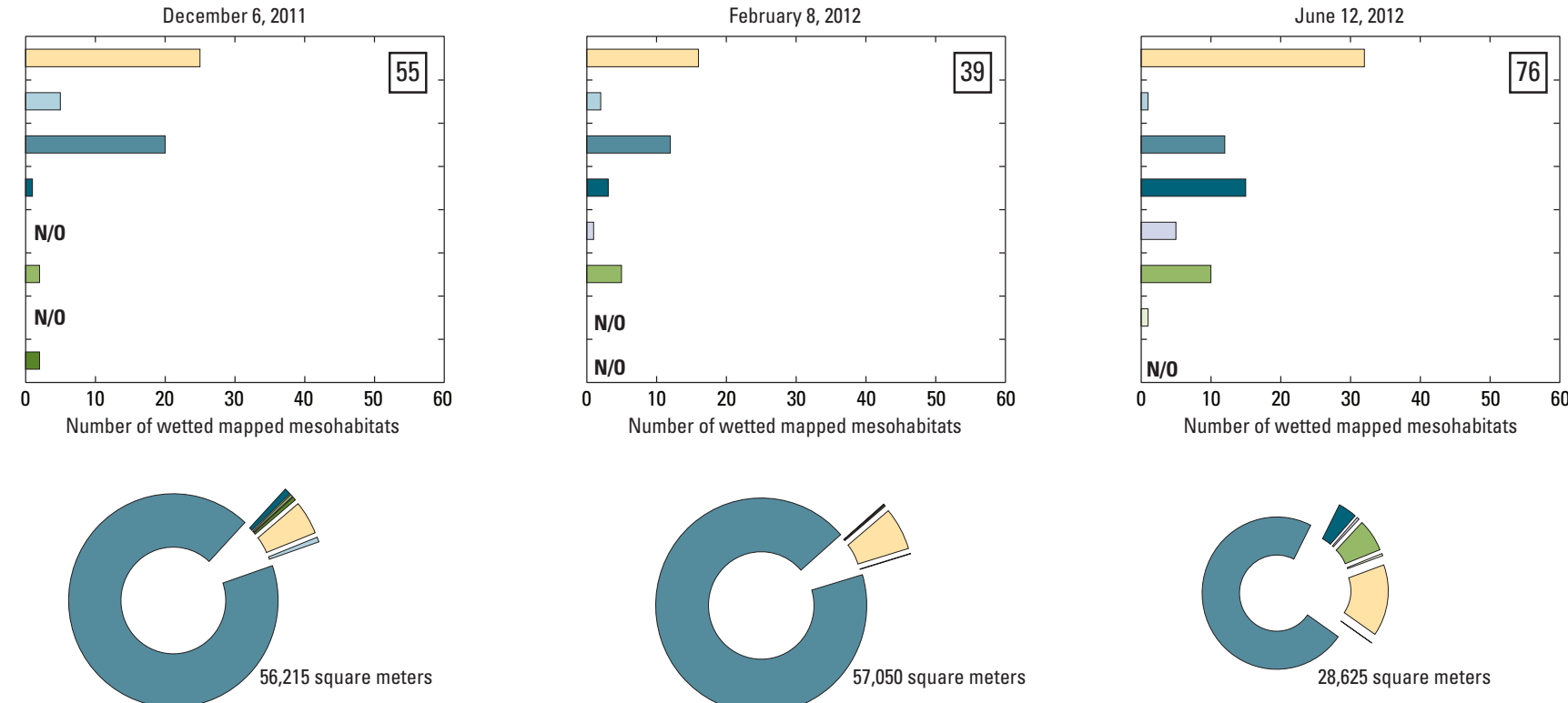
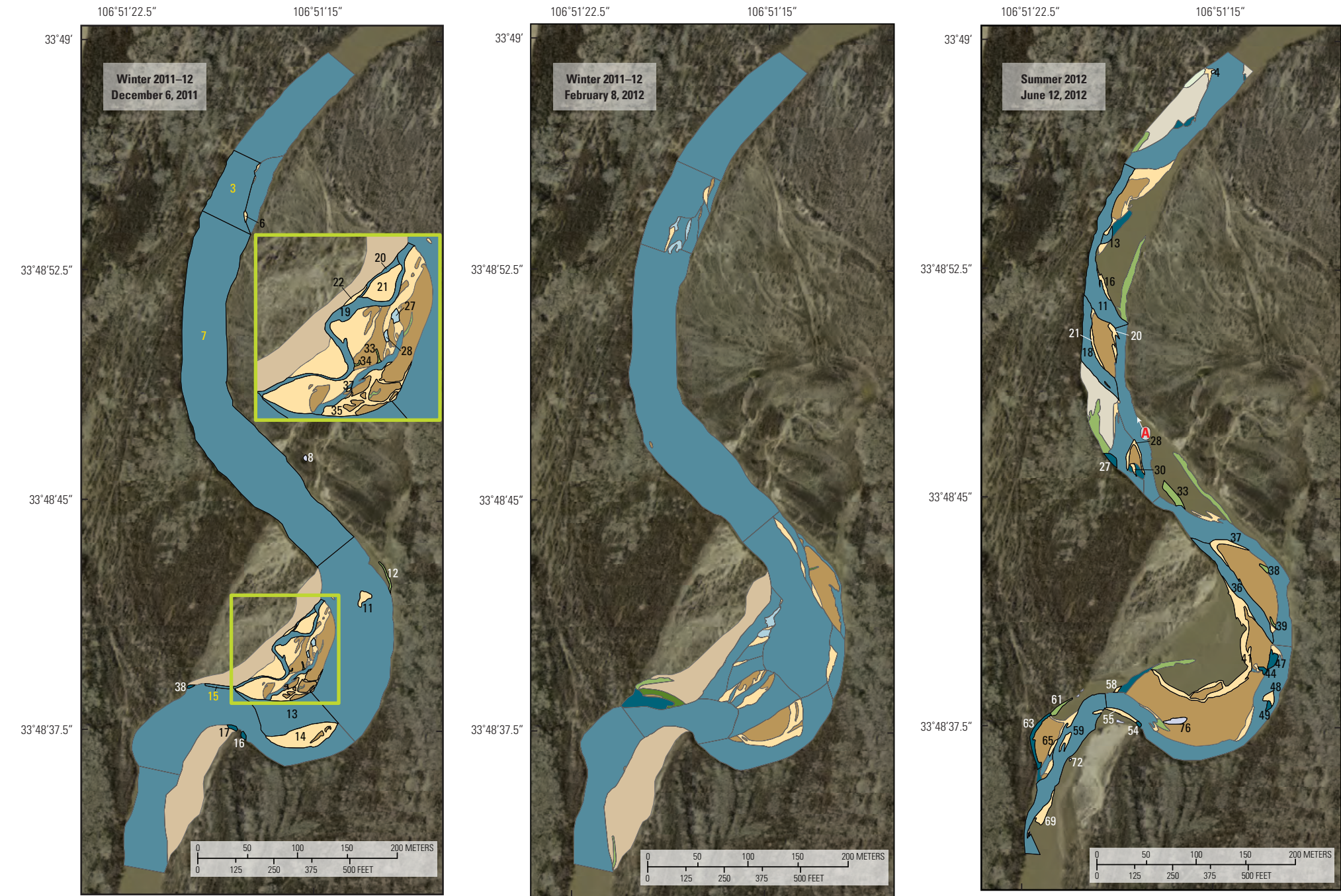


Bosque del Apache II Sampling Site



Delineation of left bank looking upstream in the Bosque del Apache II sampling site. Photograph by Daniel K. Pearson, U.S. Geological Survey.



Selected References

Bovee, K.D., Lamb, B.L., Bartholow, J.M., Stalnaker, C.B., Taylor, Jonathan, and Henriksen, J., 1998, Stream habitat analysis using instream flow incremental methodology: U.S. Geological Survey Biological Resources Division Information Technology Report USGS/BRD 1998-0004, 131 p.

Bovee, K.D., Waddle, T.J., and Spears, J.M., 2008, Streamflow and endangered species habitat in the lower Isleta reach of the Middle Rio Grande: U.S. Geological Survey Open-File Report 2008-1323, 177 p.

Braun, C.L., Pearson, D.K., Porter, M.D., and Moring, J.B., 2015, Physical characteristics and fish assemblage composition at site and mesohabitat scales over a range of streamflows in the Middle Rio Grande, New Mexico, winter 2011–12, summer 2012: U.S. Geological Survey Scientific Investigations Report 2015–5025, 90 p.

Cook, J.A., Bestgen, K.R., Propst, D.L., and Yates, T.L., 1992, Allozymic divergence and systematics of the Rio Grande silvery minnow, *Hybognathus amarus* (Teleostei—Cyprinidae): Copeia, v. 1992, no. 1, p. 36–44.

Cowley, D.E., Alleman, J.C., McShane, R.R., Shirey, P.D., and Sallanave, Rossana, 2005, Effects of salinity and suspended sediment on physical properties of the egg of the Rio Grande silvery minnow (*Hybognathus amarus*): New Mexico Water Resources Research Institute and the Department of Fishery and Wildlife Sciences, New Mexico State University, Las Cruces, New Mexico, 19 p.

Crawford, C.S., Cully, A.C., Leutheuser, R., Sifuentes, M.S., White, L.H., and Wilber, J.P., 1993, Middle Rio Grande Ecosystem—Bosque biological management plan: Report to the U.S. Fish and Wildlife Service, Albuquerque, N. Mex., 291 p.

Dudley, R.K., and Platania, S.P., 1997, Habitat use of Rio Grande silvery minnow: Report submitted to New Mexico Department of Game and Fish and Bureau of Reclamation, 96 p.

Dudley, R.K., and Platania, S.P., 2007, Flow regulation and fragmentation imperil pelagic-spawning riverine fishes: Ecological Applications, v. 17, no. 7, p. 2074–2086.

Dudley, R.K., Platania, S.P., and White, G.C., 2013, Rio Grande silvery minnow population monitoring program results from December 2011 to October 2012: American Southwest Ichthyological Researchers, LLC, Report to the Middle Rio Grande Endangered Species Act Collaborative Program, 160 p.

Dudley, R.K., White, G.C., Platania, S.P., and Helfrich, D.A., 2012, Rio Grande silvery minnow population estimation program results from October 2011: American Southwest Ichthyological Researchers, LLC, Report to the Middle Rio Grande Endangered Species Act Collaborative Program, 87 p.

Edwards, R.J., 2005, Feasibility of reintroducing Rio Grande silvery minnows (*Hybognathus amarus*) to the Rio Grande, Big Bend region, Texas: Final report to the U.S. Fish and Wildlife Service, 54 p.

Esri, 2013, GIS mapping software, solutions, services, map apps, and data: Accessed on May 15, 2013, at <http://www.esri.com>.

Fitzpatrick, F.A., Waite, I.R., D'Arconte, P.J., Meador, M.R., Maupin, M.A., and Gurtz, M.E., 1998, Revised methods for characterizing stream habitat in the National Water-Quality Assessment Program: U.S. Geological Survey Water-Resources Investigations Report 98–4052, 77 p.

Gonzales, E.J., Tave, Douglas, and Haggerty, G.M., 2014, Endangered Rio Grande silvery minnow use constructed floodplain habitat: Ecohydrology, v. 7, p. 1087–1093, accessed January 26, 2015, at <http://onlinelibrary.wiley.com/doi/10.1002/eco.1438/abstract>.

Guy, H.P., 1969, Laboratory theory and methods for sediment analysis: U.S. Geological Survey Techniques of Water Resources Investigations, book 5, chap. C1, 58 p.

Happ, S.C., 1948, Sedimentation in the Middle Rio Grande Valley, New Mexico: Geological Society of America Bulletin, v. 59, no. 12, p. 1191–1216.

Harper, D., and Everard, M., 1998, Why should the habitat-level approach underpin holistic river survey and management: Regulated Rivers, v. 8, p. 395–413.

Helsel, D.R., and Hirsch, R.M., 2002, Statistical methods in water resources: U.S. Geological Survey Techniques of Water-Resources Investigations, book 4, chap. A3, 510 p., available online at <http://pubs.usgs.gov/twri/twri4a3/>.

Iman, R.L., and Conover, W.J., 1983, A modern approach to statistics: New York, John Wiley, 496 p.

Lagasse, P.F., 1980, An assessment of the response of the Rio Grande to dam construction—Cochiti to Isleta reach: Technical report prepared for the U.S. Army Engineer District, Albuquerque Corps of Engineers, Albuquerque, New Mexico, 133 p.

Lapointe, N.W.R., Cooke, S.J., Imhof, J.G., Boisclair, D., Casselman, J.M., Curry, R.A., Langer, O.E., McLaughlin, R.L., Minns, C.K., Post, J.R., Power, M., Rassmussen, J.B., Reynolds, J.D., Richardson, J.S., and Tonn, W.M., 2013, Principles for ensuring healthy and productive freshwater ecosystems that support sustainable fisheries: Environmental Reviews, v. 22, p. 1–25.

Leopold, L.B., Wolman, M.G., and Miller, J.P., 1964, Fluvial processes in geomorphology: New York, New York, Dover Publications, 522 p.

Makar, P., and AuBuchon, J., 2012, Channel conditions and dynamics of the Middle Rio Grande: U.S. Department of the Interior, Bureau of Reclamation, Technical Service Center, Sedimentation and River Hydraulics Group, Denver, Colorado, and Upper Colorado Region, Albuquerque Area Office, Technical Services Division, Albuquerque, N. Mex.

Makar, P.W., and Massong, T.M., 2009, Contemporary physical system: San Acacia—Developing a Vision for a Sustainable Reach Workshop, Middle Rio Grande Endangered Species Collaborative Program.

Medley, C.N., and Shirey, P.D., 2013, Review and interpretation of Rio Grande silvery minnow reproductive ecology using egg biology, life history, hydrology, and geomorphology information: Ecohydrology, v. 6, no. 3, p. 491–505, accessed January 26, 2015, at <http://onlinelibrary.wiley.com/doi/10.1002/eco.1373/abstract>.

Middle Rio Grande Endangered Species Collaborative Program, 2013, Recovery Implementation Program: Final Draft Action Plan, 71 p.

Moring, J.B., Braun, C.L., and Pearson, D.K., 2014, Mesohabitats, fish assemblage composition, and mesohabitat use of the Rio Grande silvery minnow over a range of seasonal flow regimes in the Rio Grande/Rio Bravo del Norte, in and near Big Bend National Park, Texas, 2010–11: U.S. Geological Survey Scientific Investigations Report 2013–5210, 89 p., <http://pubs.usgs.gov/sir/2013/5210/>.

Newson, M.D., and Newson, C.L., 2000, Geomorphology, ecology and river channel habitat—Mesoscale approaches to basin-scale challenges: Progress in Physical Geography, v. 24, no. 2, p. 195–217.

Nielsen, L.A., and Johnson, D.L., 1983, Fisheries techniques: Blacksburg, Va., Southern Printing Company, 468 p.

Parasiewicz, P., 2001, MesoHABSIM—A concept for application of instream flow models in river restoration planning: Fisheries, v. 26, no. 9, p. 6–13.

Parasiewicz, P., and Dunbar, M.J., 2001, Physical habitat modeling for fish—A developing approach: Archives for Hydrobiologia Supplement, v. 135, no. 2–4, p. 1–30.

Pardo, Isabel, and Armitage, P.D., 1997, Species assemblages as descriptors of mesohabitats: Hydrobiologia, v. 344, p. 111–128, accessed May 6, 2013, at <http://link.springer.com/article/10.1023%2FA%3A1002958412237>.

Pease, A.A., Davis, J.J., Edwards, M.S., and Turner, T.F., 2006, Habitat and resource use by larval and juvenile fishes in an arid-land river (Rio Grande, New Mexico): Freshwater Biology, v. 51, p. 475–486.

Platania, S.P., 1993, The fishes of the Rio Grande between Velarde and Elephant Butte Reservoir and their habitat associations: Report to the New Mexico Department of Game and Fish, Santa Fe, and U.S. Bureau of Reclamation (Albuquerque Projects Office), Albuquerque, N. Mex., 188 p.

Rantz, S.E., and others, 1982, Measurement and computation of streamflow—Volumes 1 and 2: U.S. Geological Survey Water-Supply Paper 2175, 631 p.

Remshardt, W.J., and Tashjian, P.L., 2003, Habitat preference of the Rio Grande silvery minnow in relation to fluvial geomorphology and streamflow regime, Middle Rio Grande Valley, New Mexico: U.S. Fish and Wildlife Service Interim Report for Funding Year 2003, 76 p.

Richard, G.A., 2001, Quantification and prediction of lateral channel adjustments downstream from Cochiti Dam, Rio Grande, NM: Ph.D. Dissertation, Colorado State University, Fort Collins, Colo., 276 p., accessed January 30, 2015, at [http://www.engr.colostate.edu/~pierre/cc\\_old/resume/Theses%20and%20Dissertations/Giga%20Richards%20Dissertation.pdf](http://www.engr.colostate.edu/~pierre/cc_old/resume/Theses%20and%20Dissertations/Giga%20Richards%20Dissertation.pdf).

Schmidt, J.C., Everitt, B.L., and Richard, G.A., 2003, Hydrology and geomorphology of the Rio Grande and implications for river rehabilitation, in Garrett, G.P., and Allan, A.L., eds., Aquatic fauna of the northern Chihuahuan Desert—Contributed papers from a special session within the Thirty-Third Annual Symposium of the Desert Fishes Council: Lubbock, Tex., Museum of Texas Tech University, Special Publications no. 46, p. 22–45.

Scurlock, D., 1998, From the Rio to the Sierra—An environmental history of the Middle Rio Grande Basin: U.S. Department of Agriculture General Technical Report RMRS-GTR-5, 454 p.

SonTek, 2013, FlowTracker handheld acoustic Doppler velocimeter: Accessed February 6, 2013, at <http://www.sontek.com/flowtracker/>.

Sublette, J.E., Hatch, M.D., and Sublette, M., 1990, The fishes of New Mexico: Albuquerque, New Mexico, University of New Mexico Press, 393 p.

Tetra Tech, Inc., 2014, Ecohydrological relationships along the Middle Rio Grande of New Mexico for the endangered Rio Grande silvery minnow: Final Report submitted to the U.S. Army Corps of Engineers, Albuquerque District, Albuquerque, New Mexico, 109 p. (Available online from the Middle Rio Grande Collaborative Program at <http://mrgescp.dbstephens.com/Documents.aspx>).

Trimble, 2015a, DSM 232 Support—Documentation: Accessed January 28, 2015, at [http://www.trimble.com/support\\_trf.aspx?Nav=Collection-4061&pt=DSM%20232](http://www.trimble.com/support_trf.aspx?Nav=Collection-4061&pt=DSM%20232).

Trimble, 2015b, Trimble positioning services—OmniSTAR differential GNSS services: Accessed January 28, 2015, at <http://www.trimble.com/positioning-services/omnistar.aspx>.

Turnipseed, D.P., and Sauer, V.B., 2010, Discharge measurements at gaging stations: U.S. Geological Survey Techniques and Methods, book 3, chap. A8, 87 p. [Also available at <http://pubs.usgs.gov/tm/tm3-a8/>].

U.S. Army Corps of Engineers, U.S. Bureau of Reclamation, and New Mexico Interstate Stream Commission, 2007, Upper Rio Grande water operations review—Final environmental impact statement, April 2007, appendices K (Aquatic Habitat Model) and L (Biological Resources): Accessed on November 20, 2014, at <http://www.spa.usace.army.mil/Missions/CivilWorks/URGWOM/URGWOFS.aspx>.

U.S. Bureau of Reclamation, 2012, Middle Rio Grande River maintenance program comprehensive plan and guide: Accessed October 15, 2014, at [http://www.usbr.gov/uc/albuq/envdocs/reports/mrgRivMaint/CompPlan/Plan\\_Guide.pdf](http://www.usbr.gov/uc/albuq/envdocs/reports/mrgRivMaint/CompPlan/Plan_Guide.pdf).

U.S. Fish and Wildlife Service, 1994, Endangered and threatened wildlife and plants—Final rule to list the Rio Grande silvery minnow as an endangered species: Federal Register v. 59, p. 36988–37001.

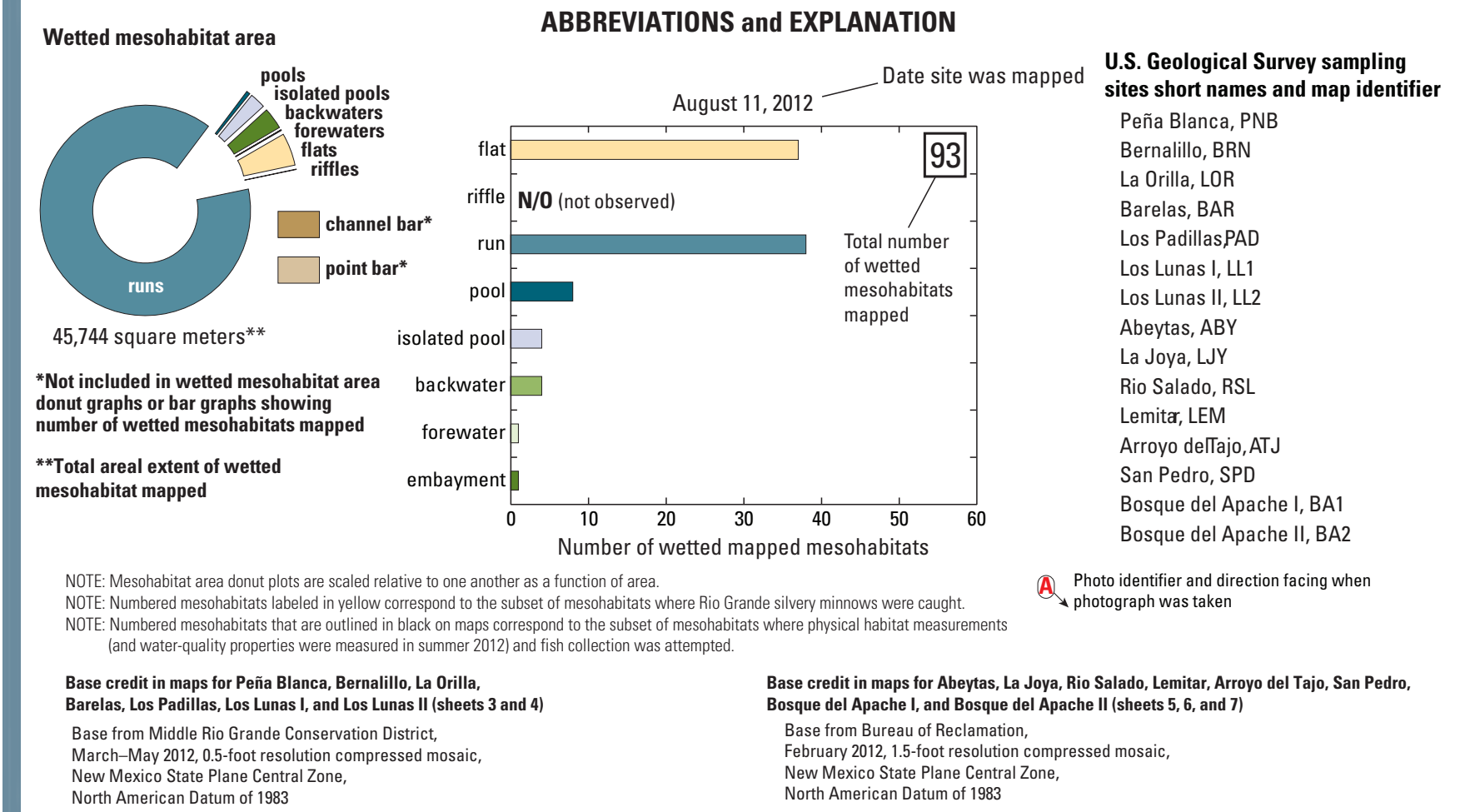
U.S. Fish and Wildlife Service, 2010, Rio Grande silvery minnow (*Hybognathus amarus*) recovery plan, first revision: Albuquerque, N. Mex., 210 p., accessed May 18, 2013, at [http://ecos.fws.gov/docs/recovery\\_plan/022210\\_v2.pdf](http://ecos.fws.gov/docs/recovery_plan/022210_v2.pdf).

U.S. Fish and Wildlife Service, 2014, Middle Rio Grande Bosque Initiative: Accessed October 21, 2004, at <https://web.archive.org/web/20070220040054/http://www.fws.gov/southwest/mrgbi/>.

U.S. Geological Survey, 2014, National Water Information System: Accessed September 22, 2014, at <http://waterdata.usgs.gov/bx/nwis/>.

Vogt, B., 2003, The arroyo problem in the southwestern United States: Accessed February 19, 2014, at <http://geochange.er.usgs.gov/sw/impacts/geology/arroyos/>.

Wentworth, C.K., 1922, A scale of grade and class terms for clastic sediments: The Journal of Geology, v. 30, no. 5, p. 377–392.



Fish Assemblage Composition and Mapped Mesohabitat Features Over a Range of Streamflows  
in the Middle Rio Grande, New Mexico, Winter 2011–12, Summer 2012

By  
Daniel K. Pearson, Christopher L. Braun, and J. Bruce Moring  
2015