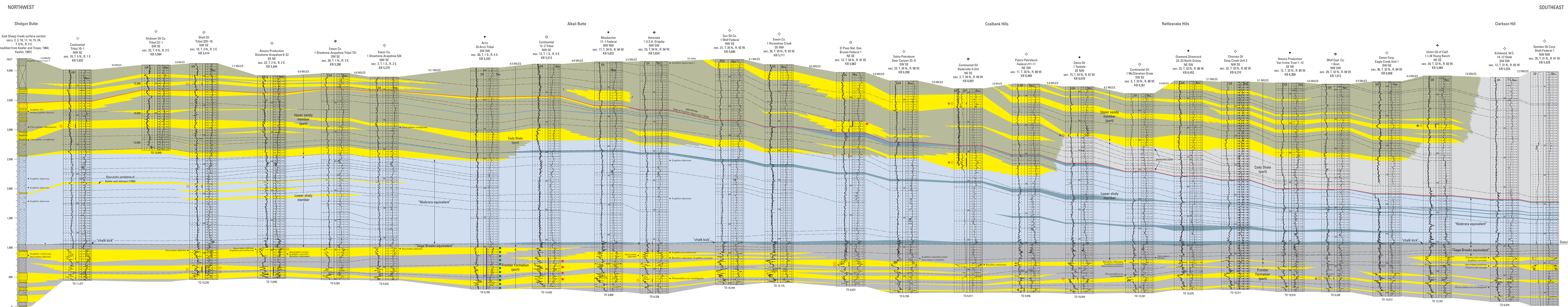


**NORTH LINE—Cross Section of Niobrara Equivalent Strata in the Wind River Basin, Wyoming**



**SOUTH LINE—Cross Section of Niobrara Equivalent Strata in the Wind River Basin, Wyoming**

**Detailed Cross Sections of Niobrara Equivalent Strata in the Wind River Basin, Wyoming**

By  
**Thomas M. Finn**  
2017

This map or plate is offered as an online-only, digital publication. Users should be aware that, because of differences in rendering processes and pixel resolution, some slight distortions of color may occur when viewing it on a computer screen or when printing it on an electronic device, even when it is viewed or printed at its intended publication scale.

For more information concerning this publication, contact:  
Geological Survey, 5050 Central Energy Resources Science Center  
Denver, CO 80225  
303-251-1500  
http://www.usgs.gov

For product and ordering information visit:  
http://energy.usgs.gov

For more information concerning this publication, contact:  
Geological Survey, 5050 Central Energy Resources Science Center  
Denver, CO 80225  
303-251-1500  
http://www.usgs.gov

For product and ordering information visit:  
http://energy.usgs.gov