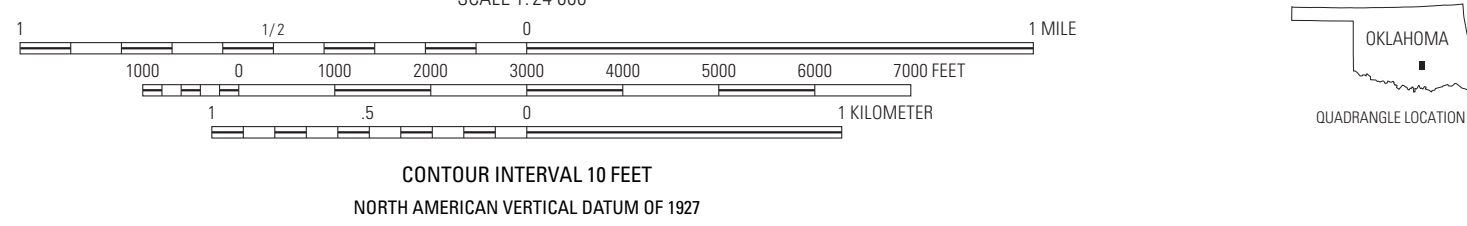


Base from U.S. Geological Survey 24,000-scale Fittstown, Okla. (1967) North American Datum of 1927 (NAD27). 1,000-meter Universal Transverse Mercator Projection grid ticks, zone 14 10,000-foot grid based on Oklahoma Coordinate System, south zone. Shaded-relief base from U.S. Geological Survey National Elevation Dataset (NED) 1/9 arc-second, accessed in 2016 at <http://nationalmap.gov/elevation.htm>

1" = 100,000 FEET  
APPROXIMATE MEAN  
SEA LEVEL, 2011



Any use of trade, firm, or product names is for descriptive purposes only and does not imply endorsement by the U.S. Government.

Although this information product, for the most part, is in the public domain, it also may contain copyrighted materials as noted in the text. Permission to reproduce copyrighted items must be secured from the copyright owner.

This database, identified as SM 3371, has been approved for release and publication by the U.S. Geological Survey (USGS). Although this database has been subjected to rigorous review and is substantially complete, the USGS reserves the right to revise the data pursuant to further analysis and review. Furthermore, it is released on condition that neither the USGS nor the U.S. Government may be held liable for any damages resulting from its authorized or unauthorized use.

Although these data have been processed successfully on a computer system at the U.S. Geological Survey (USGS), no warranty expressed or implied is made regarding the display or utility of the data on any other system or for general or scientific purposes, nor shall the act of distribution constitute any such warranty. The USGS or the U.S. Government shall not be held liable for improper or incorrect use of the data described and/or contained herein.

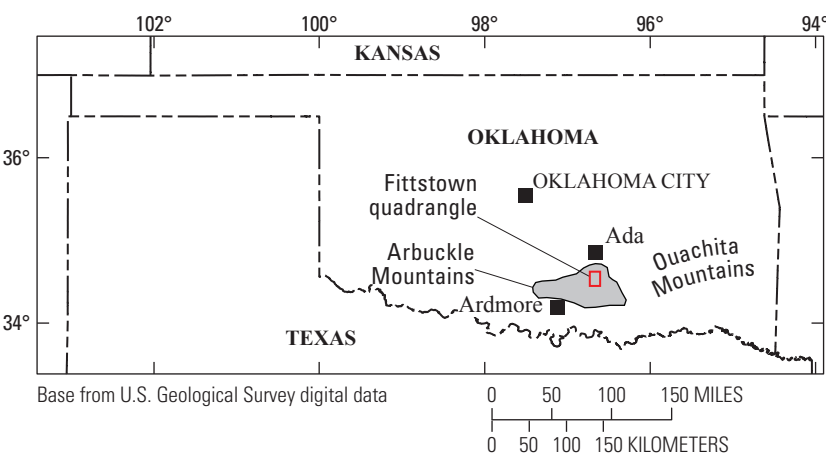
This map or plate is offered as an online-only, digital publication. Users should be aware that, because of differences in rendering processes and pixel resolution, some slight distortion of scale may occur when viewing it on a computer screen or when printing it on an electronic plotter, even when it is viewed or printed at its intended publication scale.

Printing support provided by  
Denver Publishing Service Center  
Edit and digital layout by J.A. Henrich  
Manuscript approved for publication November 21, 2016  
To learn about the USGS and its information products visit  
<http://www.usgs.gov/>  
1-888-ASK-USGS

## Geologic Map of the Fittstown 7.5' Quadrangle, Pontotoc and Johnston Counties, Oklahoma

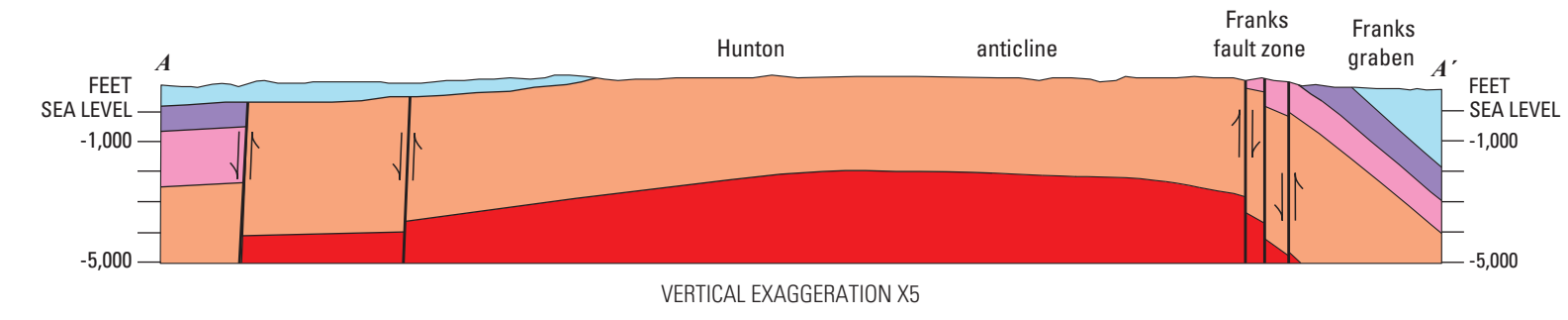
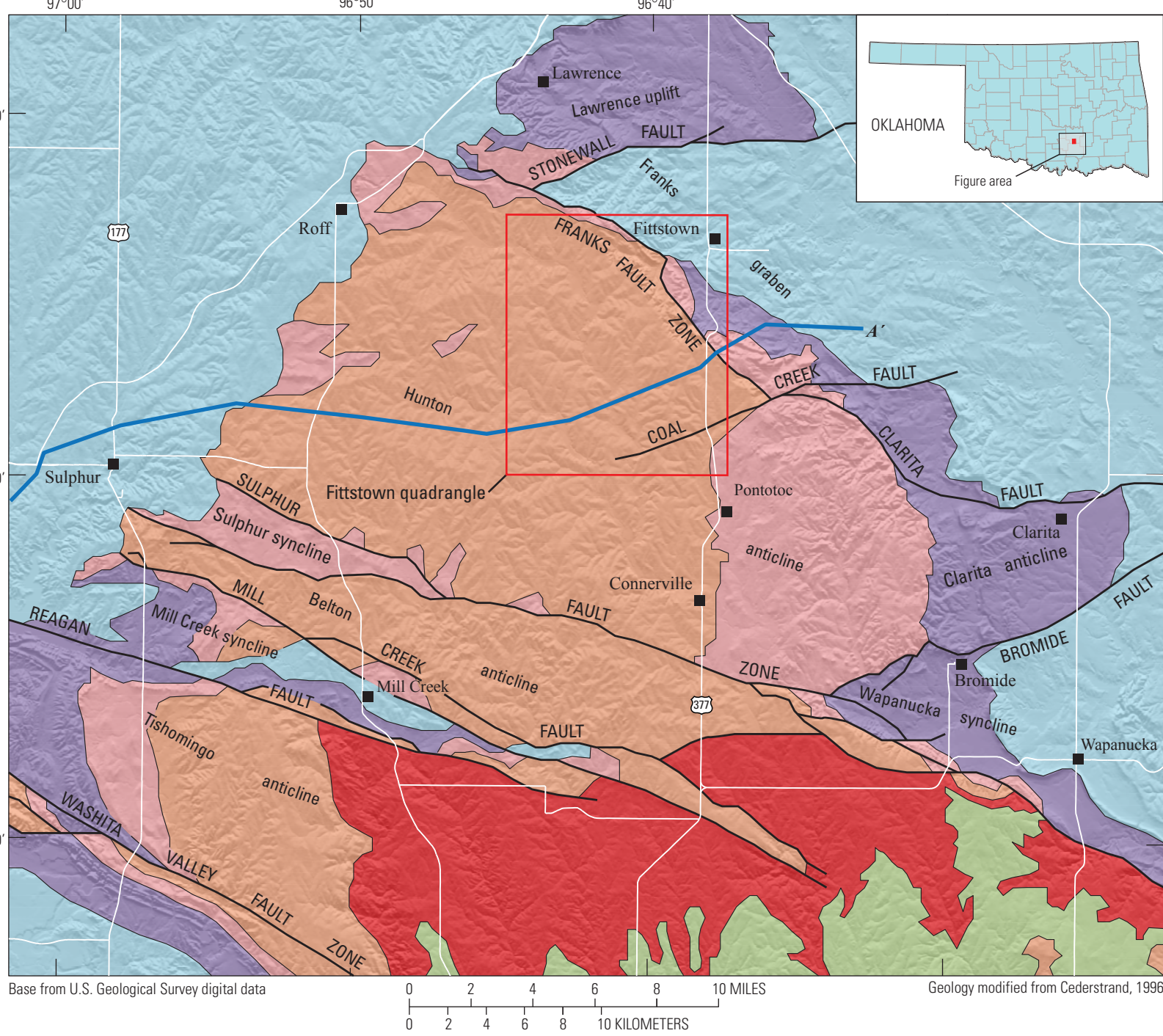
By  
David J. Lidke and Charles D. Blome  
2017

Original geologic compilation by William E. Ham, Myron E. McKinley, and others, 1954, Oklahoma Geological Survey. Revised by Johnson, 1990, Oklahoma Geological Survey. Field work done in 2009–2011 by David J. Lidke and Charles D. Blome. D. Paco Van Sistine edited the digital compilation of the geologic map and the GIS databases. Digital topographic base prepared by Theodore R. Brandt.



Location of Fittstown 7.5' quadrangle, Pontotoc and Johnston Counties, Oklahoma, including approximate outline of the Arbuckle Mountains. Also shown as figure 1 in the pamphlet.

CONVERSION FACTORS		
Multiply	By	To obtain
	Length	
inch (in.)	2.54	centimeter (cm)
inch (in.)	25.4	millimeter (mm)
foot (ft)	0.3048	meter (m)
mile (mi)	1.609	kilometer (km)



EXPLANATION  
Cretaceous units  
Permian and Pennsylvanian units  
Mississippian-Middle Ordovician units  
Proterozoic igneous and metamorphic rock  
Simpson Group (Middle Ordovician)  
Arbuckle and Timbered Hills Group  
Lower Ordovician-Cambrian  
Roads  
Contact  
Fault  
Line of section  
Quadrangle boundary  
Relative fault motion

Generalized geologic sketch map and cross section of the northeastern Arbuckle Mountains, Oklahoma, including outline of the Fittstown 7.5' quadrangle map area (in red). Modified from Christensen and others (their fig. 7, 2011) with geology based on Cederstrand (1996). Also shown as figure 4 in the pamphlet.



Solution cavities and box work breccia in fine-grained sandstone of West Spring Creek Formation (Arbuckle Group) in the central part of the map area. Sandstone beds occur but are uncommon within this formation in the map area.

For more information concerning this publication, contact  
Center Director, USGS Geosciences and Environmental Change Science Center  
Box 20406, Mail Stop 980  
Denver, CO 80202  
303.228.5344

Or visit the Geosciences and Environmental Change Science Center Web site at <http://gec.cr.usgs.gov/>

Suggested citation: Lidke, D.J., and Blome, C.D., 2017, Geologic map of the Fittstown 7.5' quadrangle, Pontotoc and Johnston Counties, Oklahoma: U.S. Geological Survey Scientific Investigations Map 3371, 14 p., 1 sheet, scale 1:24,000, <https://doi.org/10.3133/si3371>.

ScienceBase citation: Lidke, D.J., and Blome, C.D., 2016, Data release for Geologic Map of the Fittstown 7.5' quadrangle, Pontotoc and Johnston Counties, Oklahoma: U.S. Geological Survey data release, <https://doi.org/10.5066/77P9WJN>.

ISBN 1239-123X (online)  
<https://doi.org/10.3133/si3371>