

Base from U.S. Geological Survey Strawberry Butte 1:24,000-scale, 1987
Revised by U.S. Forest Service Strawberry Butte 1:24,000-scale, 1995
Projection and 1000-meter grid
Universal Transverse Mercator ticks, zone 12
10,000-foot ticks, Montana coordinate system, central zone
1983 North American Datum

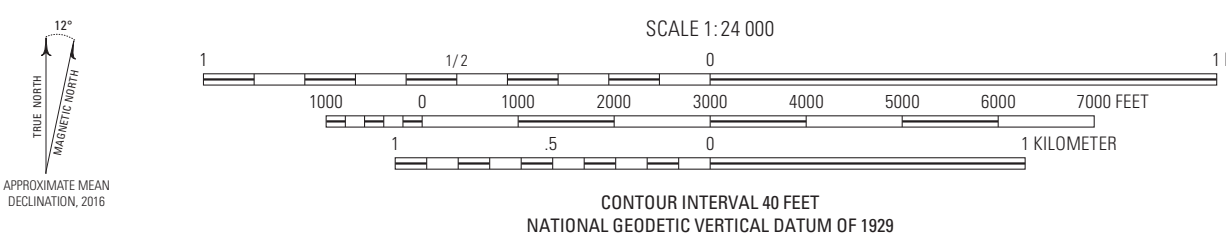
Any use of trade, firm, or product names is for descriptive purposes only and does not imply endorsement by the U.S. Government.

Although this information product, for the most part, is in the public domain, it also may contain copyrighted materials as noted in the text. Permission to reproduce copyrighted items must be secured from the copyright owner.

This database, identified as SIM 3379, has been approved for release and publication by the U.S. Geological Survey (USGS). Although this database has been subjected to rigorous review and is substantially complete, the USGS reserves the right to revise the data pursuant to further analysis and review. Furthermore, the database is released on condition that neither the USGS nor the U.S. Government shall be held liable for any damages resulting from its authorized or unauthorized use.

Although these data have been processed successfully on a computer system at the U.S. Geological Survey (USGS), no warranty expressed or implied is made regarding the display or utility of the data on any other system or for general or scientific purposes, nor shall the act of distribution constitute any such warranty. The USGS or the U.S. Government shall not be held liable for improper or incorrect use of the data described and/or contained herein.

This map or plate is offered as an online-only, digital publication. Users should be aware that, because of differences in rendering processes and pixel resolution, some slight distortion of scale or color may occur when viewing it on a computer screen or when printing it on an electronic plotter, even when it is viewed or printed as its intended publication scale.



Geology mapped by Mitchell W. Reynolds in July 1998 and July 1999, assisted by Sandra A. Reynolds
Digital topographic base map, digital compilation, and geographic information systems (GIS) database prepared by Theodore R. Brandt
Color design of map and figures by Mitchell W. Reynolds

CONVERSION FACTORS

U.S. Customary Units to International System		
Multiply	By	To obtain
inch (in.)	2.54	centimeter (cm)
inch (in.)	25.4	millimeter (mm)
foot (ft)	0.3048	meter (m)
mile (mi)	1.609	kilometer (km)

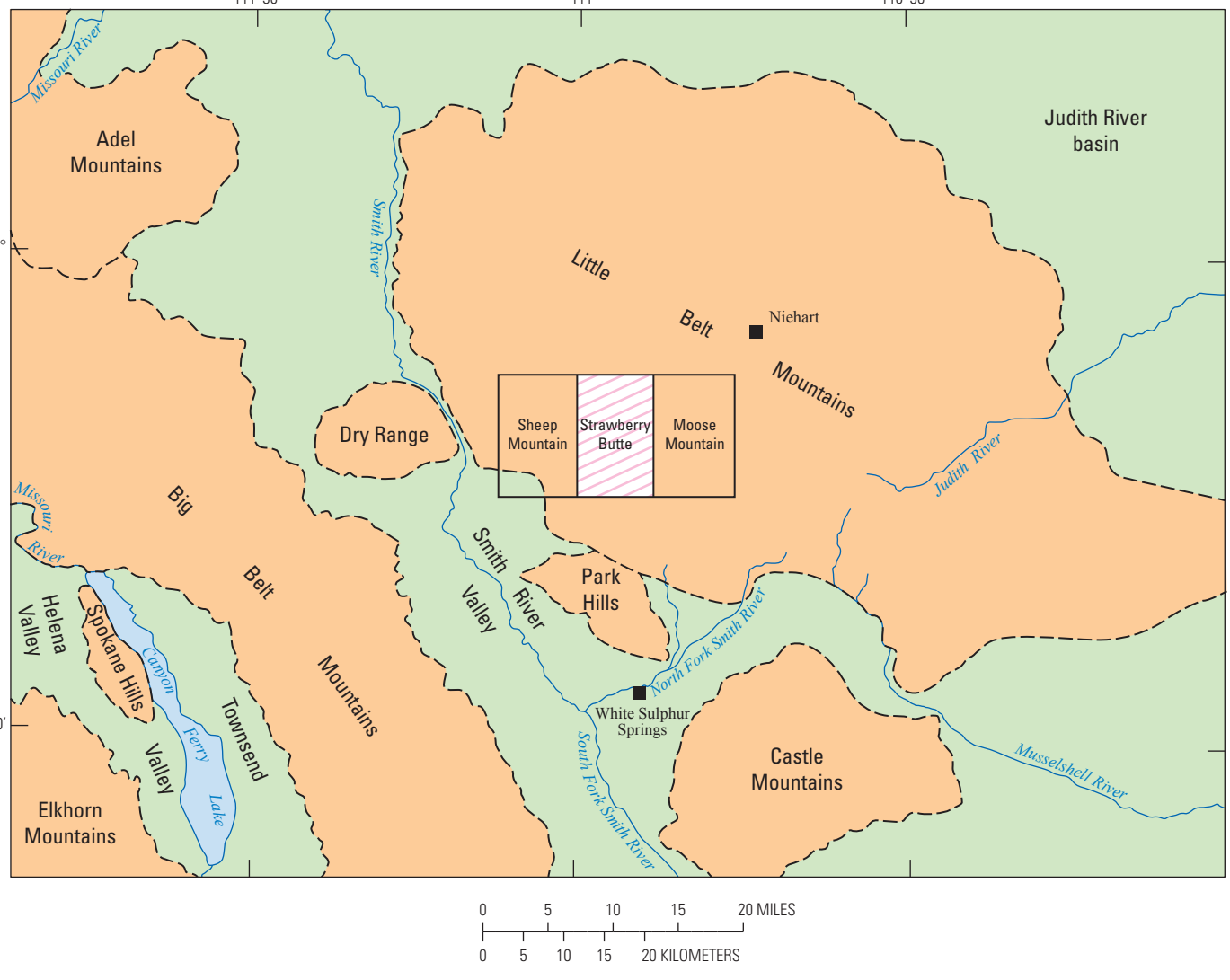
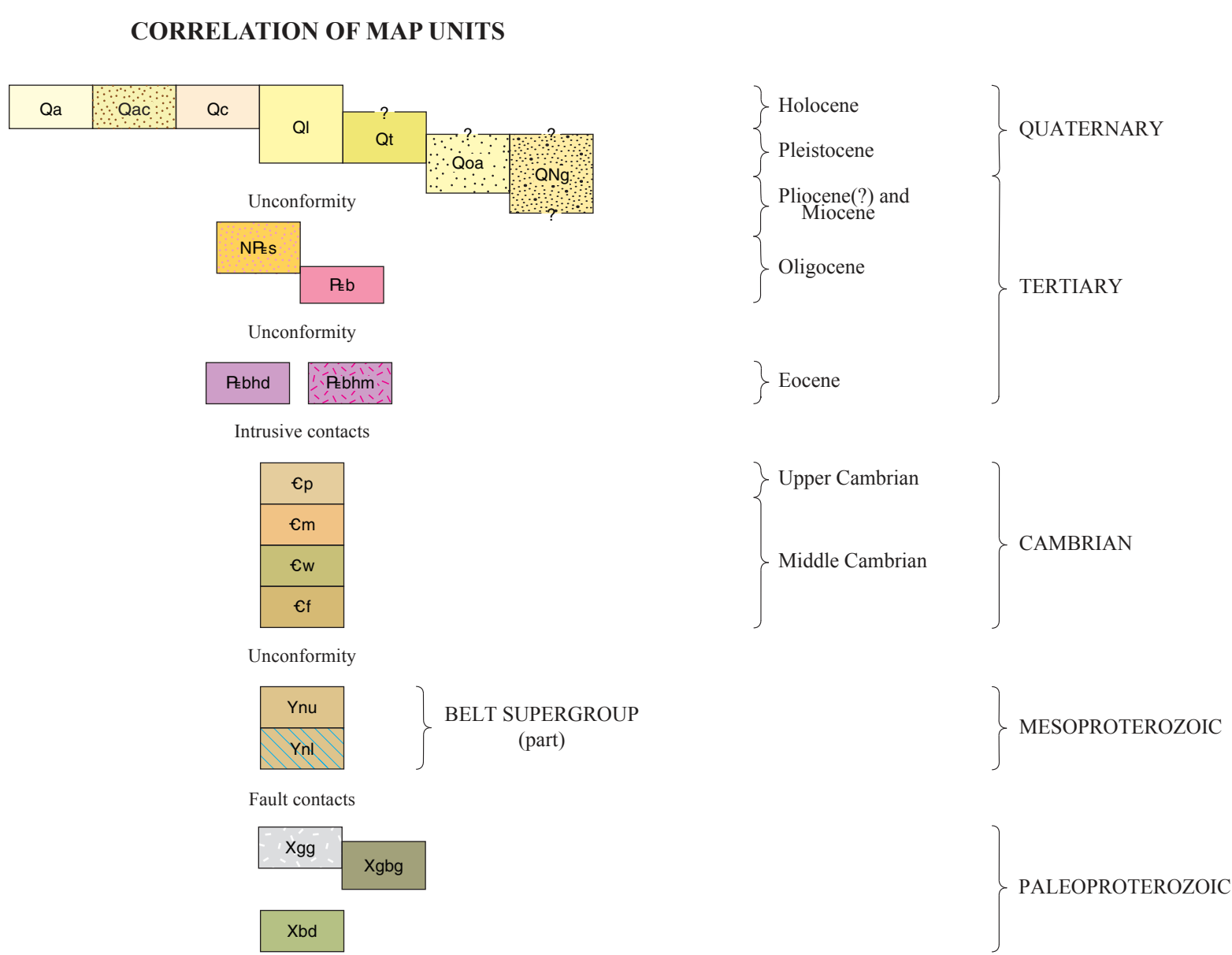


Figure 1. Generalized physiography of west-central Montana, showing location of the Strawberry Butte and adjacent 7.5' quadrangles referred to in the text and annotated with names of selected topographic and cultural features; orange shading indicates highlands and green indicates lowlands.

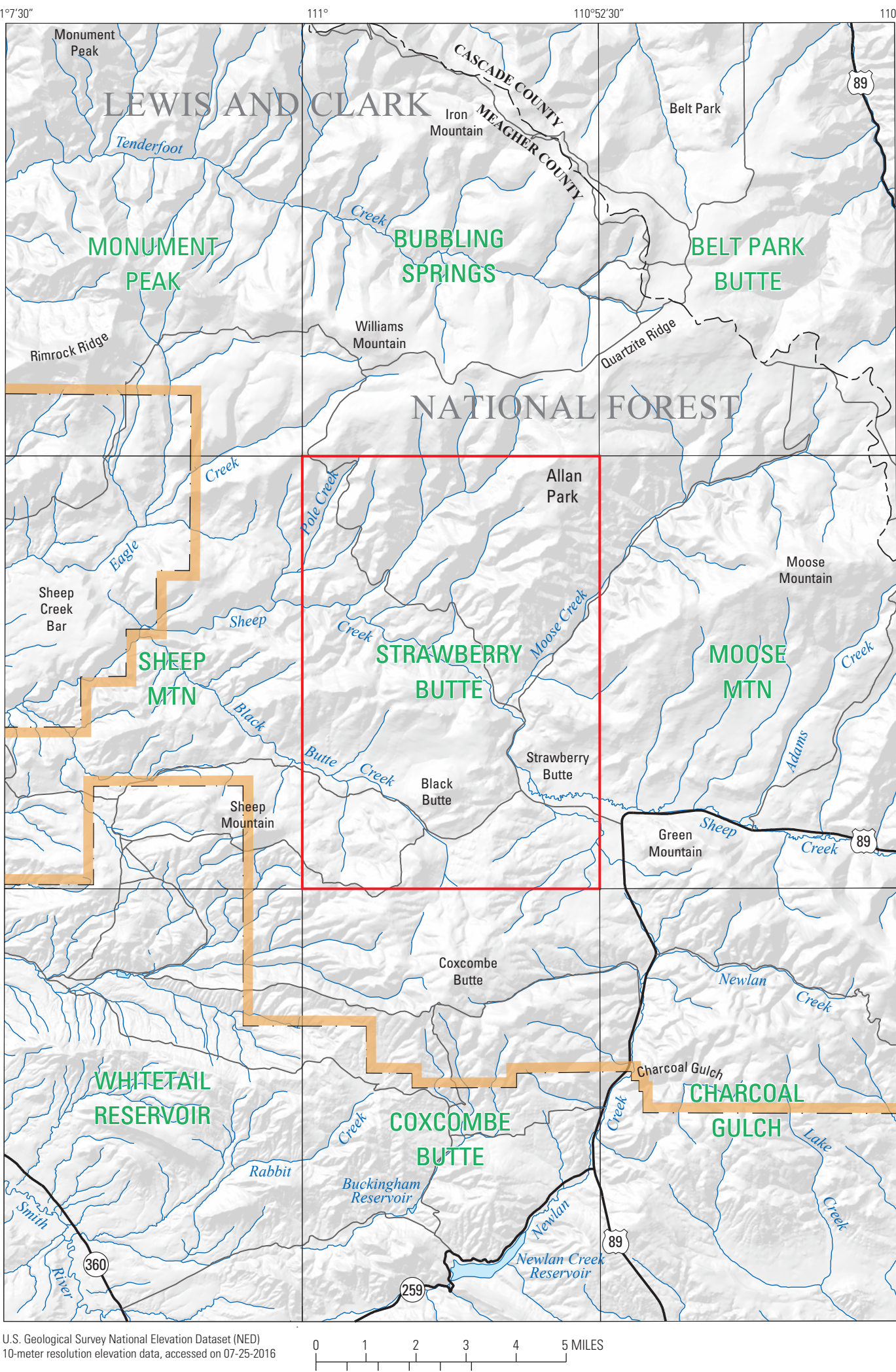


Figure 2. Shaded relief map of the Strawberry Butte 7.5' quadrangle (red rectangle) and adjacent areas showing features referred to in the accompanying pamphlet. Selected streams, blue; roads and vehicle trails, black and gray lines respectively. Quadrangle names, green. Lewis and Clark National Forest exterior boundary, dashed and orange lines. There are private inholdings within the boundaries of the National Forest shown on this map.

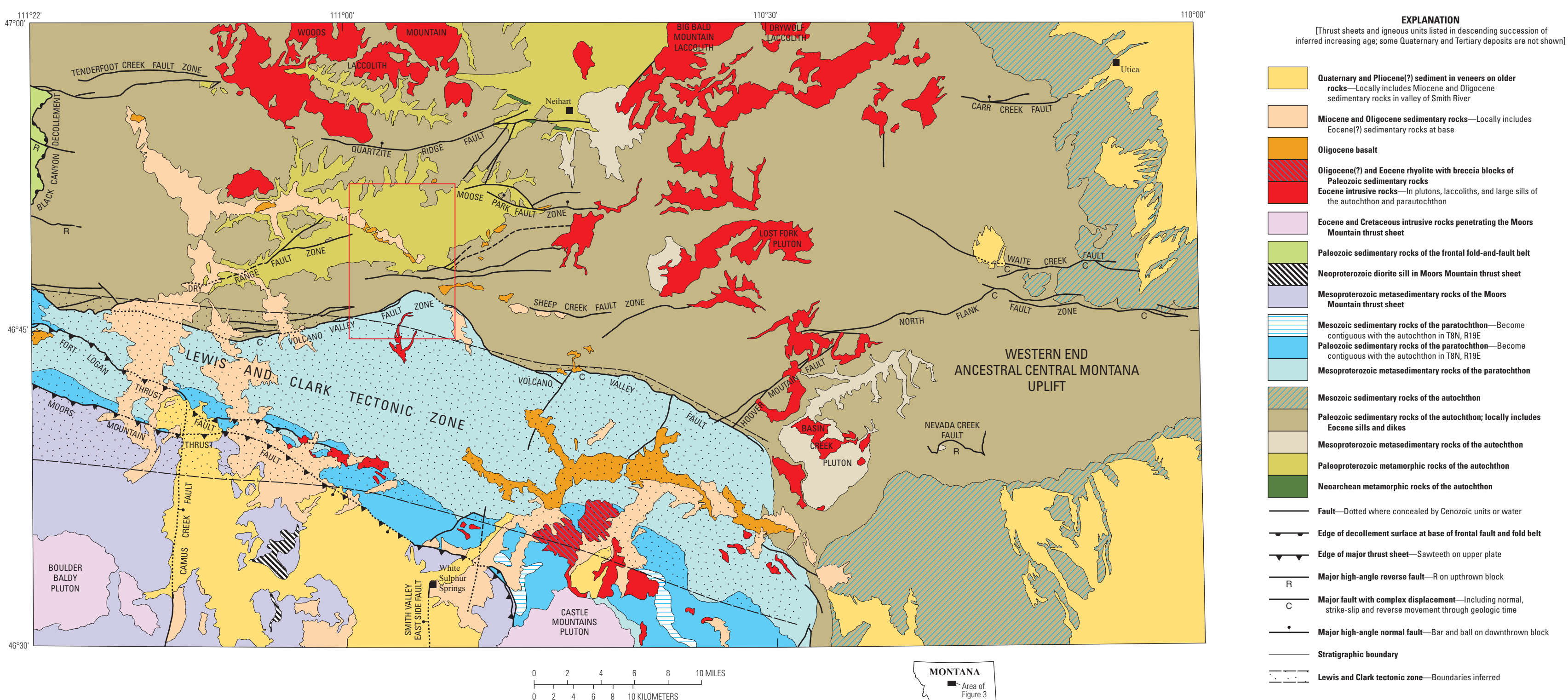


Figure 3. Tectonic map of west-central Montana showing principal faults, major tectonic elements, and major areas of Quaternary sediments. Thrust sheets and igneous units listed in descending succession of inferred increasing age within tectonic elements (for example, autochthon and parautochthon). Red rectangular outline shows the location of the Strawberry Butte 7.5' quadrangle (modified from Reynolds and Brandt, 2005, figure 2, sheet 1).

For more information concerning this publication, contact
Carter Director, USGS Science and Environmental Change Science Center
Box 25046, Mail Stop 980
Denver, CO 80225
(303) 236-5544

© U.S. Geological Survey and Environmental Change Science Center Web site at <http://pub.cr.usgs.gov/>
Source: Reynolds, M.W., and Brandt, T.R., 2007. Data release for the geologic map of the Strawberry Butte 7.5' quadrangle, Meagher County, Montana. U.S. Geological Survey data release, <https://doi.org/10.5060/7133881>.
Suggested citation: Reynolds, M.W., and Brandt, T.R., 2017. Geologic map of the Strawberry Butte 7.5' quadrangle, Meagher County, Montana. U.S. Geological Survey Scientific Investigations Map 3379, pamphlet No. 2, sheet 1, scale 1:24,000, <https://doi.org/10.3133/si3379>.

Geologic Map of the Strawberry Butte 7.5' Quadrangle, Meagher County, Montana

By
Mitchell W. Reynolds and Theodore R. Brandt
2017

Publishing support provided by
Printer: Publishing Service Center
Edit and digital layout by J.A. Harbeck
Manuscript prepared for publication March 15, 2017
To learn about the USGS and the information products visit
<http://www.usgs.gov/>
1-888-ASK-USGS