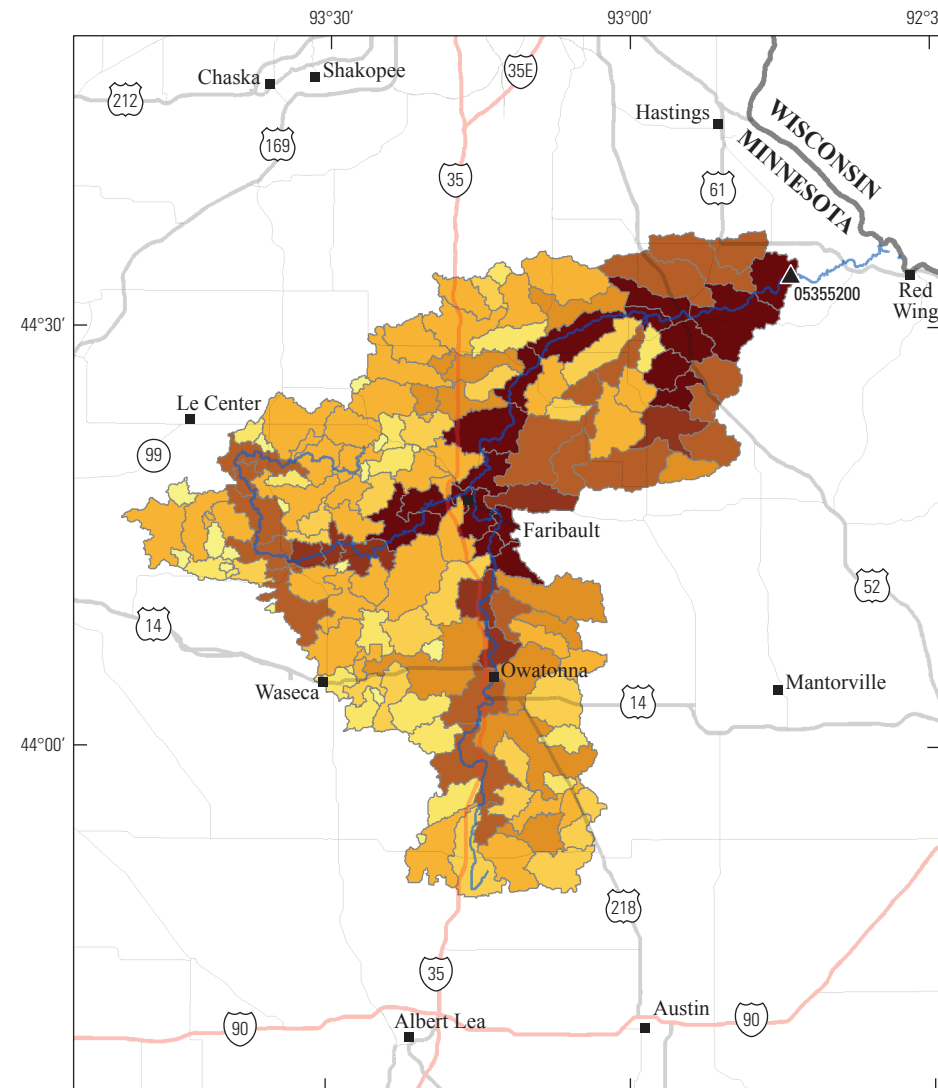


Base map modified from U.S. Geological Survey, Minnesota Department of Natural Resources and other digital data, various scales
Universal Transverse Mercator projection, zone 15 North
North American Datum of 1983

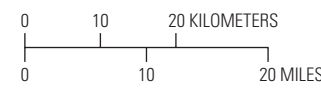


EXPLANATION

Estimated flow, in cubic feet per second, exceeded 95 percent of the time	Interstate highway
0.000262 to 0.0100	U.S. highway
0.0101 to 0.0500	Minnesota State highway
0.0501 to 0.100	U.S. Geological Survey streamgage and number (table 1)
0.101 to 0.500	
0.501 to 1.00	
1.01 to 5.00	
5.01 to 10.0	
10.1 to 45.0	

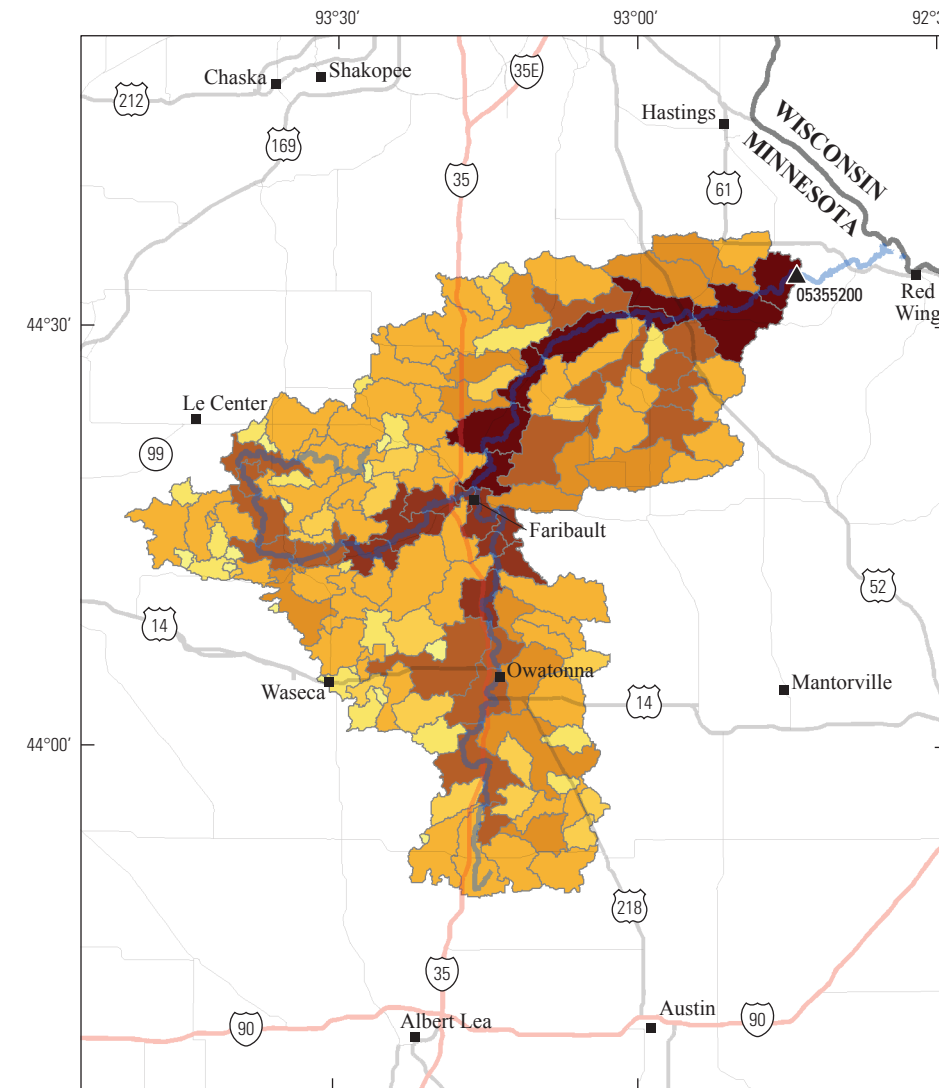


Base map modified from U.S. Geological Survey, Minnesota Department of Natural Resources and other digital data, various scales
Universal Transverse Mercator projection, zone 15 North
North American Datum of 1983

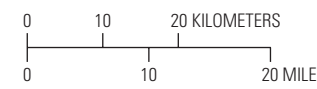


EXPLANATION

Estimated flow, in cubic feet per second, exceeded 90 percent of the time	Interstate highway
0.000569 to 0.0100	U.S. highway
0.0101 to 0.0500	Minnesota State highway
0.0501 to 0.100	U.S. Geological Survey streamgage and number (table 1)
0.101 to 0.500	
0.501 to 1.00	
1.01 to 5.00	
5.01 to 10.0	
10.1 to 79.5	

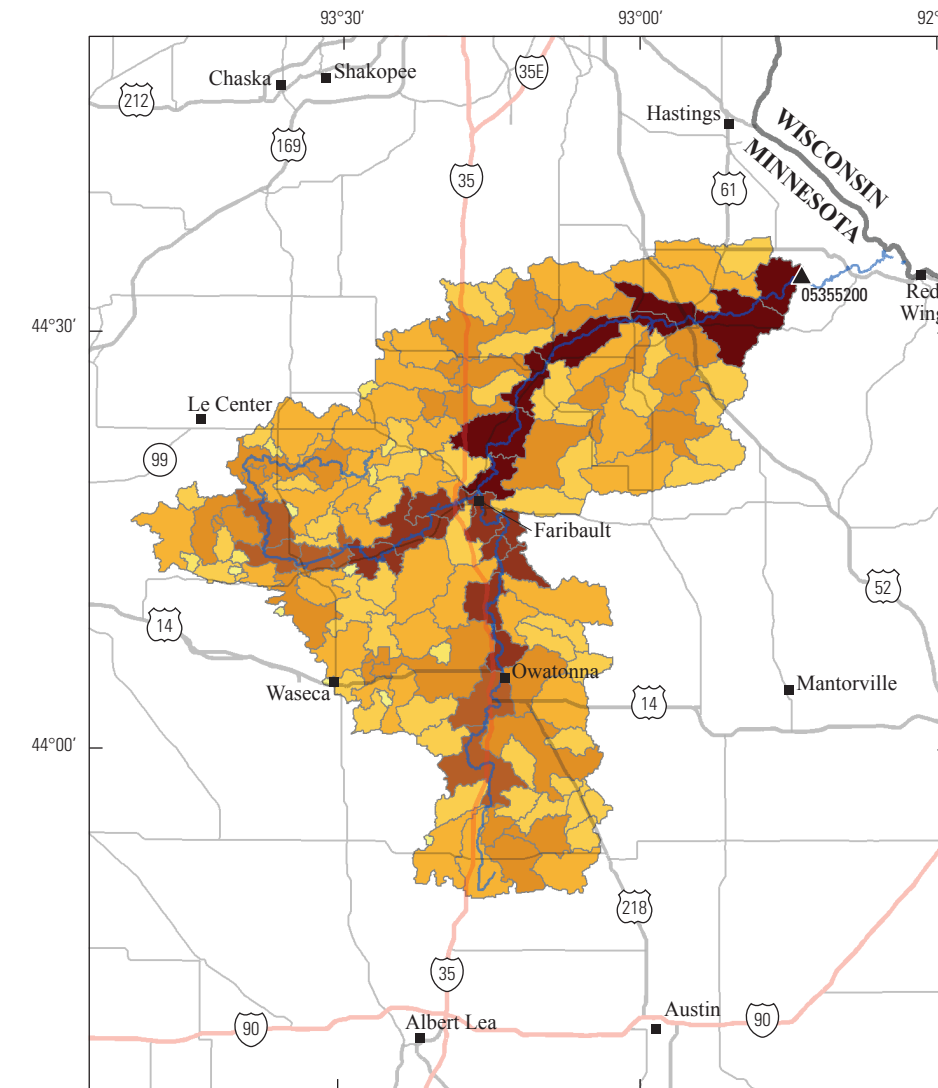


Base map modified from U.S. Geological Survey, Minnesota Department of Natural Resources and other digital data, various scales
Universal Transverse Mercator projection, zone 15 North
North American Datum of 1983

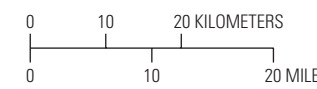


EXPLANATION

Estimated flow, in cubic feet per second, exceeded 50 percent of the time	Interstate highway
0.0143 to 0.100	U.S. highway
0.101 to 0.500	Minnesota State highway
0.501 to 1.00	U.S. Geological Survey streamgage and number (table 1)
1.01 to 5.00	
5.01 to 10.0	
10.1 to 50.0	
50.1 to 100	
101 to 404	



Base map modified from U.S. Geological Survey, Minnesota Department of Natural Resources and other digital data, various scales
Universal Transverse Mercator projection, zone 15 North
North American Datum of 1983



EXPLANATION

Estimated flow, in cubic feet per second, exceeded 2 percent of the time	Interstate highway
1.91 to 5.00	U.S. highway
5.01 to 10.0	Minnesota State highway
10.1 to 50.0	U.S. Geological Survey streamgage and number (table 1)
50.1 to 100	
101 to 500	
501 to 1,000	
1,010 to 2,000	
2,010 to 4,600	

For more information concerning this publication, contact:
Director, USGS Minnesota Water Science Center
2280 Wooddale Drive
Mounds View, MN 55112
(763) 783-3100
For additional information visit <https://mn.water.usgs.gov>
Publishing support provided by the Rolla Publishing Service Center

The streamflow distribution maps should not be used for regulatory, permitting, or other legal purposes. The USGS provides these maps "as-is" for a quick-reference, but assumes no legal liability or responsibility resulting from the use of this information.

Selected Streamflow Distribution Maps for the Cannon River Drainage Basin above U.S. Geological Survey Streamgage 05355200 at Welch, Minnesota