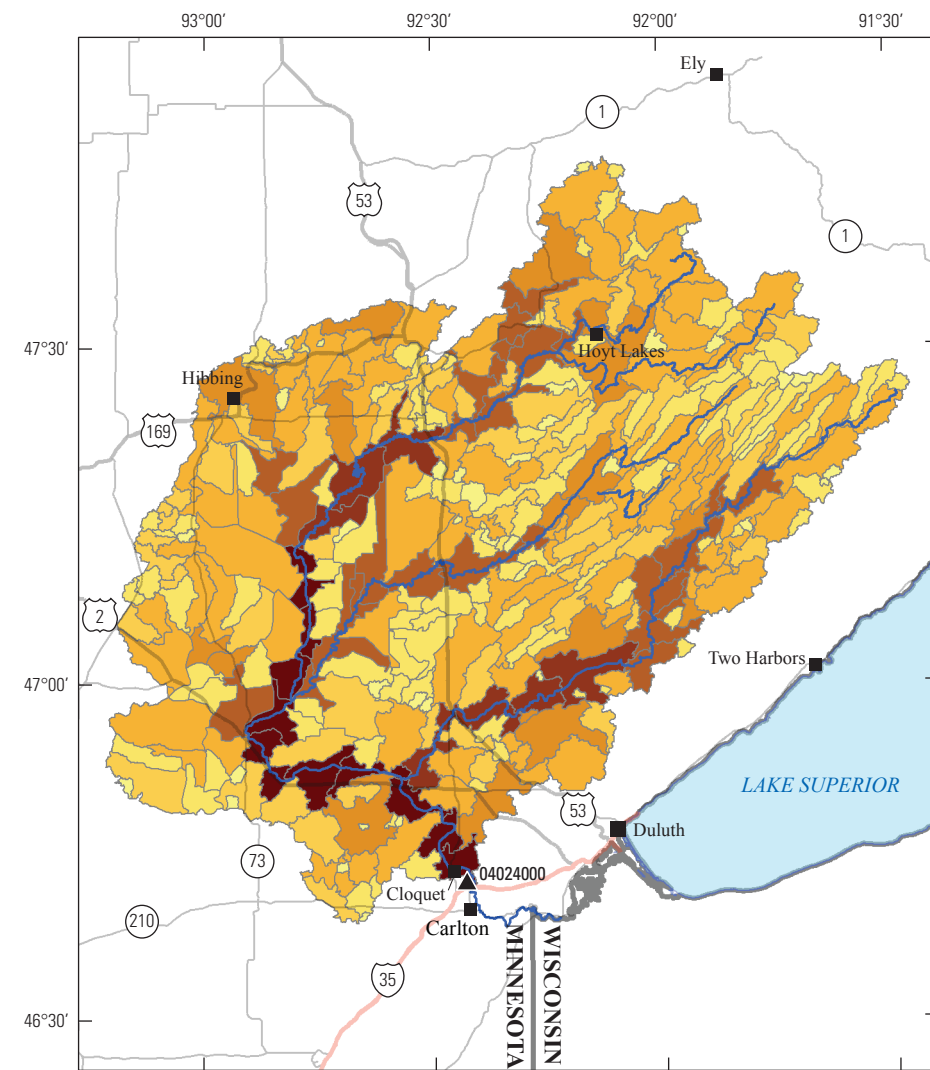


Base map modified from U.S. Geological Survey, Minnesota Department of Natural Resources and other digital data, various scales  
Universal Transverse Mercator projection, zone 15 North  
North American Datum of 1983

**EXPLANATION**

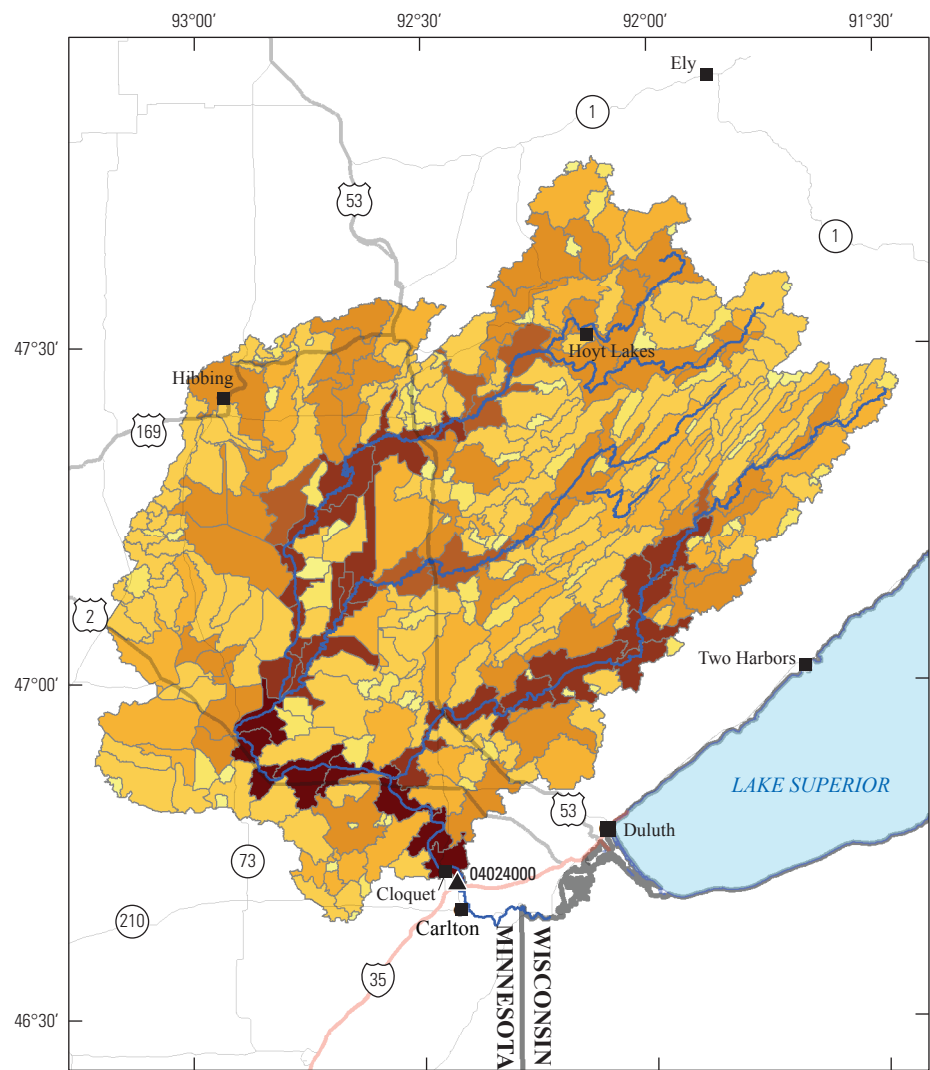
Estimated flow, in cubic feet per second, exceeded 95 percent of the time	Interstate highway
0.00877 to 0.100	U.S. highway
0.101 to 0.500	Minnesota State highway
0.501 to 1.00	U.S. Geological Survey streamgage and number (table 1)
1.01 to 5.00	
5.01 to 10.0	
10.1 to 50.0	
50.1 to 100	
101 to 261	



Base map modified from U.S. Geological Survey, Minnesota Department of Natural Resources and other digital data, various scales  
Universal Transverse Mercator projection, zone 15 North  
North American Datum of 1983

**EXPLANATION**

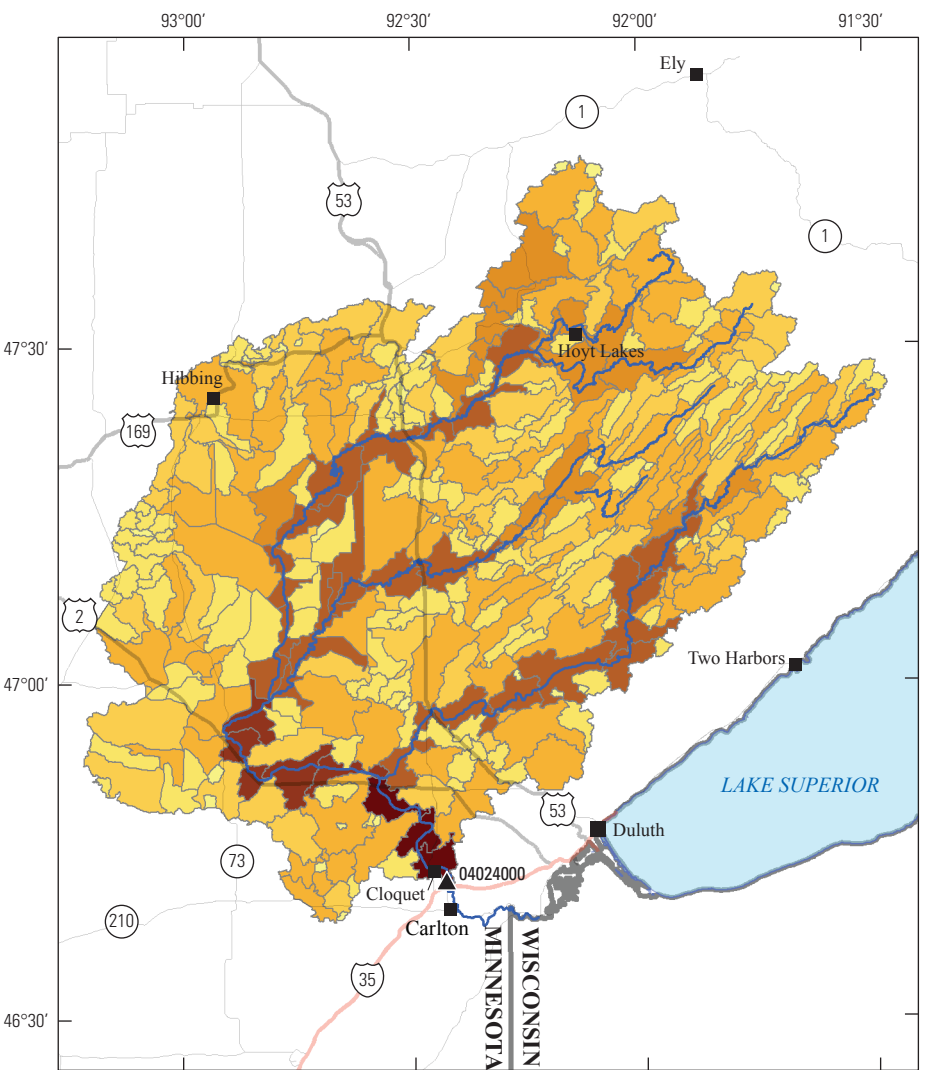
Estimated flow, in cubic feet per second, exceeded 90 percent of the time	Interstate highway
0.0191 to 0.100	U.S. highway
0.101 to 0.500	Minnesota State highway
0.501 to 1.00	U.S. Geological Survey streamgage and number (table 1)
1.01 to 5.00	
5.01 to 10.0	
10.1 to 50.0	
50.1 to 100	
101 to 346	



Base map modified from U.S. Geological Survey, Minnesota Department of Natural Resources and other digital data, various scales  
Universal Transverse Mercator projection, zone 15 North  
North American Datum of 1983

**EXPLANATION**

Estimated flow, in cubic feet per second, exceeded 50 percent of the time	Interstate highway
0.116 to 0.500	U.S. highway
0.501 to 1.00	Minnesota State highway
1.01 to 5.00	U.S. Geological Survey streamgage and number (table 1)
5.01 to 10.0	
10.1 to 50.0	
50.1 to 100	
101 to 500	
501 to 1,110	



Base map modified from U.S. Geological Survey, Minnesota Department of Natural Resources and other digital data, various scales  
Universal Transverse Mercator projection, zone 15 North  
North American Datum of 1983

**EXPLANATION**

Estimated flow, in cubic feet per second, exceeded 2 percent of the time	Interstate highway
2.35 to 10.0	U.S. highway
10.1 to 50.0	Minnesota State highway
50.1 to 100	U.S. Geological Survey streamgage and number (table 1)
101 to 500	
501 to 1,000	
1,010 to 5,000	
5,010 to 10,000	
10,100 to 11,500	

For more information concerning this publication, contact:  
Director, USGS Minnesota Water Science Center  
2280 Wooddale Drive  
Mounds View, MN 55112  
(763) 783-3100  
For additional information visit <https://mn.water.usgs.gov>  
Publishing support provided by the Rolla Publishing Service Center

The streamflow distribution maps should not be used for regulatory, permitting, or other legal purposes. The USGS provides these maps "as-is" for a quick-reference, but assumes no legal liability or responsibility resulting from the use of this information.

**Selected Streamflow Distribution Maps for the St. Louis River Drainage Basin above U.S. Geological Survey Streamgage 04024000 at Scanlon, Minnesota**