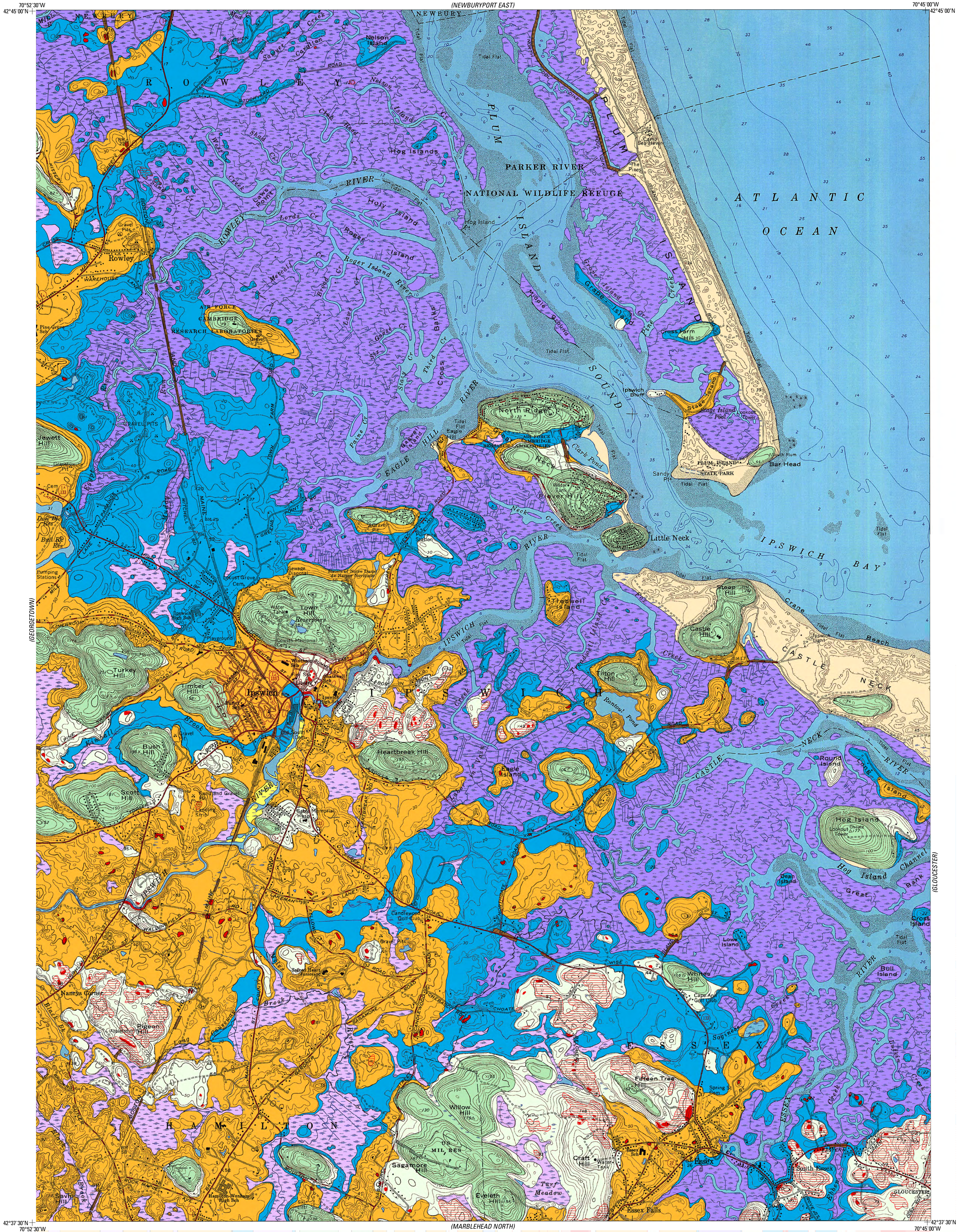




U.S. Department of the Interior
U.S. Geological Survey

Prepared in cooperation with the
Commonwealth of Massachusetts
Massachusetts Geological Survey
and Executive Office for Administration and Finance

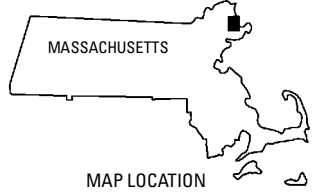
Scientific Investigations Map 3402
Quadrangle 147—Ipswich
Discussion of surficial materials and
description of map units available at
<https://doi.org/10.3133/sim3402>



Base from U.S. Geological Survey, 1966
Map was scanned, processed, georeferenced,
rectified, and cropped by the Massachusetts
Geological Survey
Lambert Conformal Conic projection, North American
Datum of 1983
Massachusetts state plane coordinate system,
mainland zone
Hydrographic information is not intended for
navigational purposes

15°
TRUE NORTH
APPROXIMATE MEAN
DECLINATION, 2018

SCALE 1:24 000
1 0.5 0 0.5 1 MILE
1000 0 1000 2000 3000 4000 5000 6000 7000 FEET
1 0.5 0 0.5 1 KILOMETER
CONTOUR INTERVAL 10 FEET
NATIONAL GEODETIC VERTICAL DATUM OF 1929



Map units were reproduced from Sammel (1963). Some
units were mapped or revised from analysis of
topographic (lidar) data and 2005 orthophoto images.

Surficial Materials Map of the Ipswich Quadrangle, Massachusetts

Compiled by
Byron D. Stone, Janet R. Stone, and Mary L. DiGiacomo-Cohen
2018

Any use of trade, firm, or product names is for descriptive purposes only and
does not imply endorsement by the U.S. Government

For sale by U.S. Geological Survey, Box 25286, Denver Federal Center,
Denver, CO 80225; <https://store.usgs.gov>; 1-888-ASK-USGS (1-888-275-8747)

Suggested citation: Stone, B.D., Stone, J.R., and DiGiacomo-Cohen, M.L.,
comps., 2018, Surficial materials map of the Ipswich quadrangle,
Massachusetts, quadrangle 147 in Stone, J.R., Stone, B.D., DiGiacomo-Cohen,
M.L., and Mabey, S.B., comps., Surficial materials of Massachusetts—A
1:24,000-scale geologic map database: U.S. Geological Survey Scientific
Investigations Map 3402, 1 sheet, scale 1:24,000, <https://doi.org/10.3133/sim3402>

ISSN 2329-132X (online)
<https://doi.org/10.3133/sim3402>