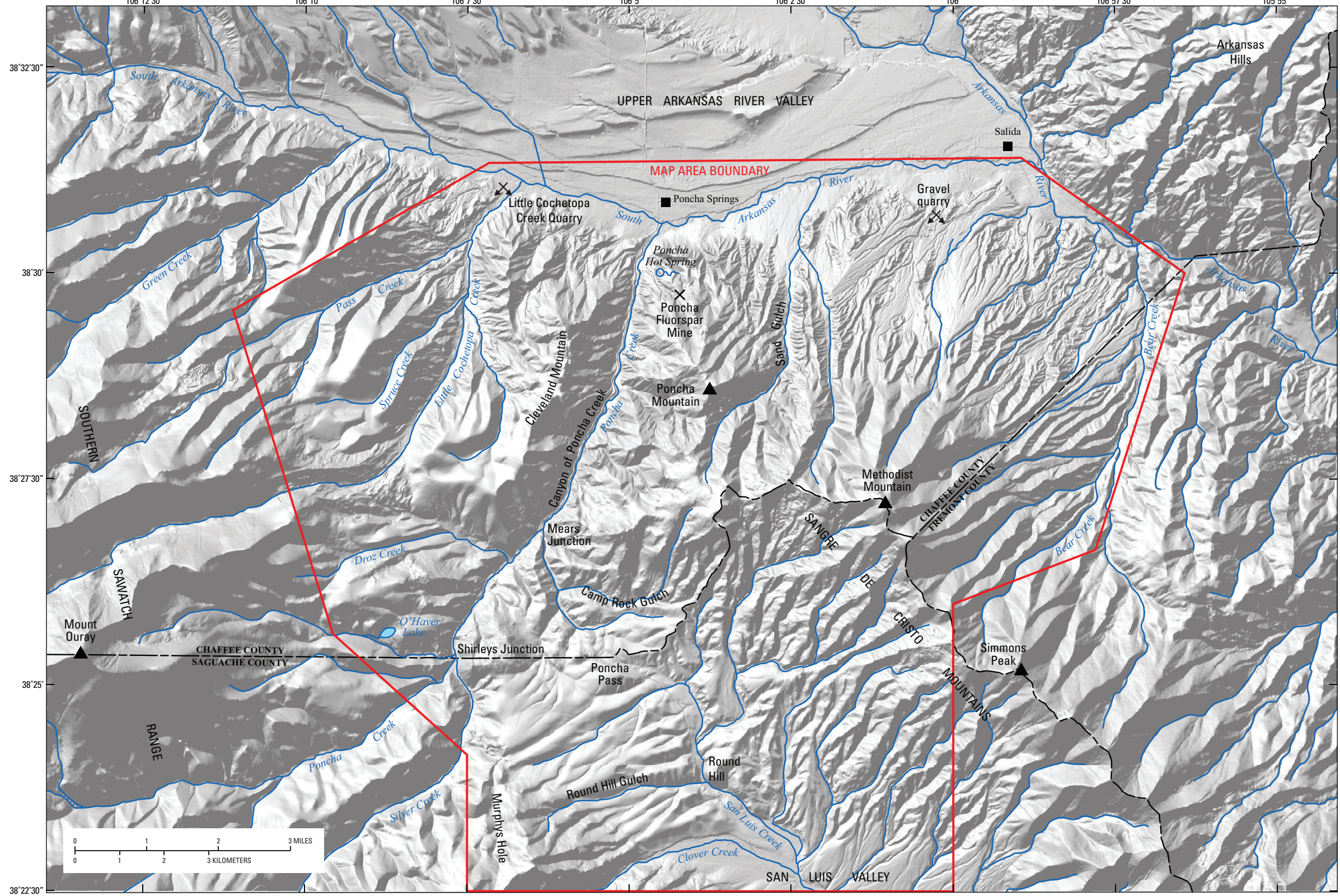
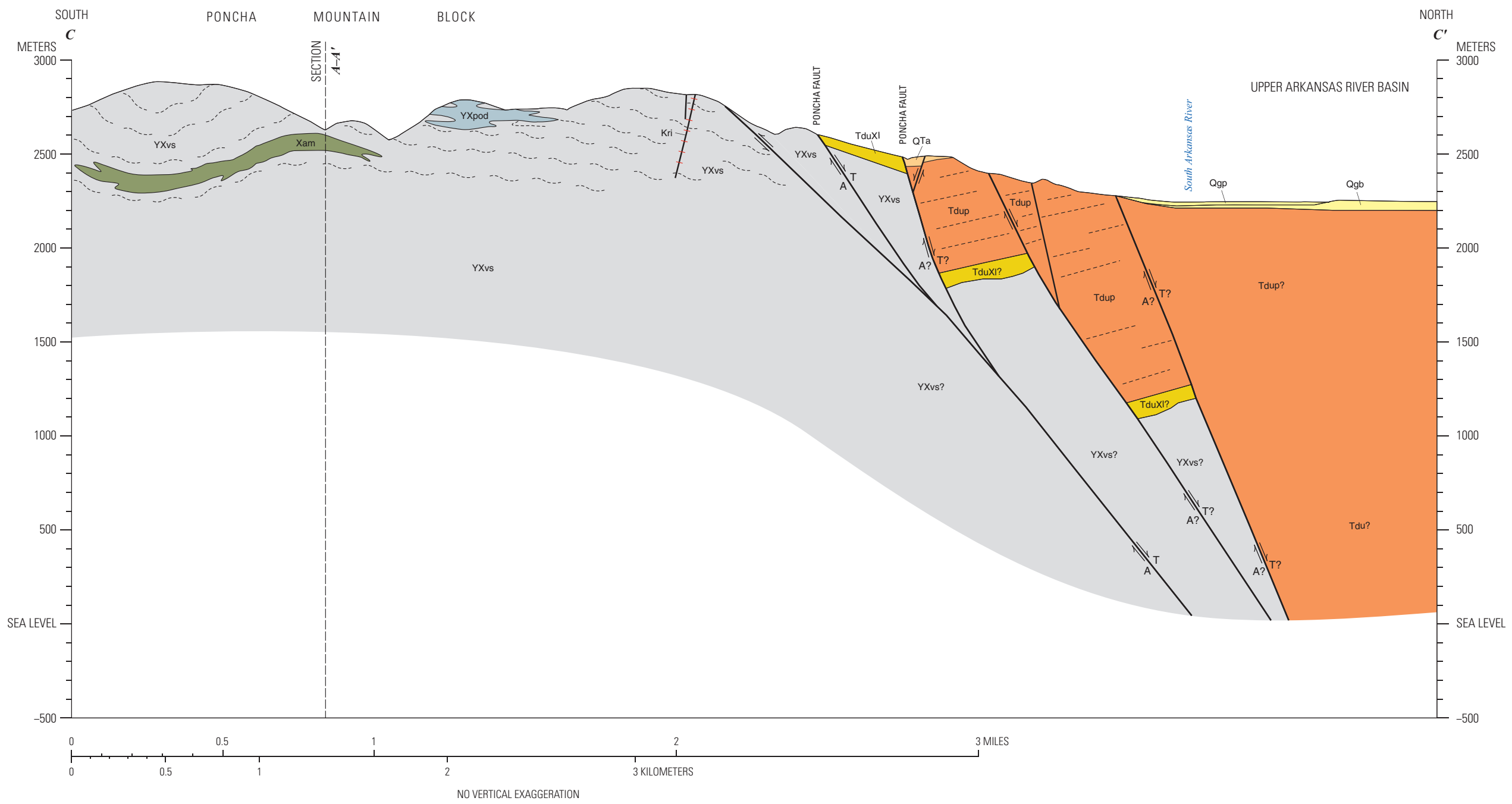
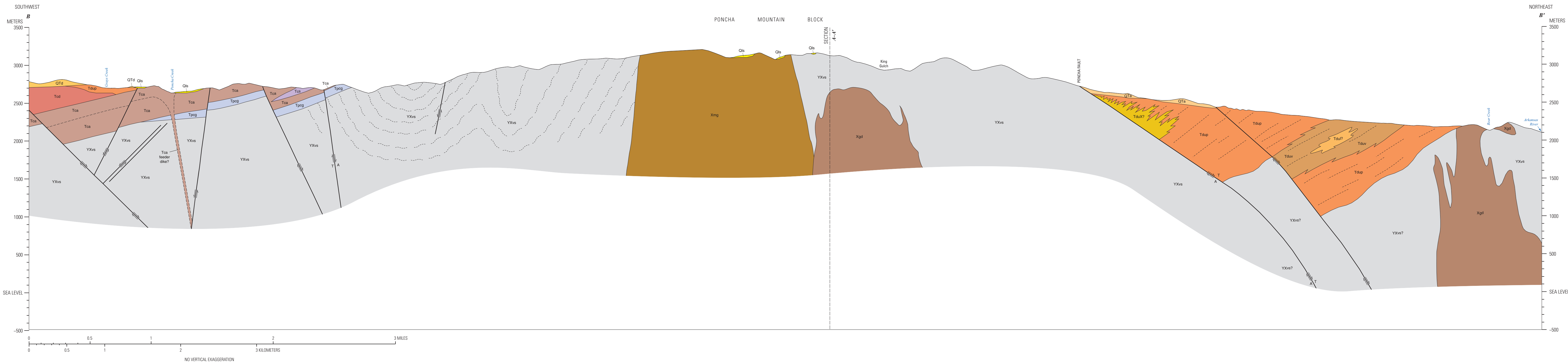


Mapped surficial Quaternary units are not shown in the cross sections, with the exception of units Qls, Qgp, Qgb, QTa, and QTd.
All geologic features shown in the subsurface are inferred. Wavy, short-dashed lines in unit YXvs depict inferred subsurface foliation patterns, where reasonably constrained by surface observations.
A = fault block movement away from observer; T = fault block movement towards observer.



Map of the Poncha Pass area place names and physiography; red outline indicates extent of geologic mapping at 1:24,000 (extent of this Scientific Investigations Map). Shaded-relief base from U.S. Geological Survey National Elevation Dataset (accessed in 2018 at <https://viewer.nationalmap.gov/basic/>), 10-meter resolution elevation data; North American Datum 1983 (NAD83).

Geologic Map of the Poncha Pass Area, Chaffee, Fremont, and Saguache Counties, Colorado

By
Scott A. Minor, Jonathan Saul Caine, Chester A. Ruleman, Christopher J. Fridrich, Christine F. Chan, Theodore R. Brandt,
Christopher S. Holm-Denoma, Leah E. Morgan, Michael A. Cosca, and V.J.S. Grauch
2019

For more information concerning this publication, contact the
Center Director, USGS Sciences and Environmental Change Science Center
Box 25060, Mail Stop 980
Denver, CO 80225
(303) 226-5344
Or visit the Geosciences and Environmental Change Science Center website at
<https://www.usgs.gov/centers/geoscience>

Digital files available at <https://doi.org/10.3133/sim3436>

ScienceBase data release GIS and other files that support this report are available at
<https://doi.org/10.5066/950Y1Y4F>

Publishing support provided by Denver Publishing Service Center
Digital cartographic production and editing by J.A. Henrick and L.J. Binder
Manuscript approved for publication July 26, 2019

To learn about the USGS and its information products visit
<https://www.usgs.gov>
1-888-ASK-USGS
This report is available at <https://doi.org/10.3133/sim3436>

Any use of trade, firm, or product names is for descriptive purposes only and does not imply endorsement by the U.S. Government.
Although this information product, for the most part, is in the public domain, it also contains copyrighted materials as noted in the text. Permission to reproduce copyrighted items must be secured from the copyright owner.

Although these data have been processed successfully on a computer system at the USGS, no warranty expressed or implied is made regarding the display or utility of the data in any other system or for general or scientific purposes, nor shall the act of distribution constitute any such warranty. The USGS or the U.S. Government shall not be held liable for improper or incorrect use of the data described and/or contained herein.

153N 229-120X (online)
<https://doi.org/10.3133/sim3436>

Suggested citation: Minor, S.A., Caine, J.S., Ruleman, C.A., Fridrich, C.J., Chan, C.F., Brandt, T.R., Holm-Denoma, C.S., Morgan, L.E., Cosca, M.A., and Grauch, V.J.S., 2019, Geologic map of the Poncha Pass area, Chaffee, Fremont, and Saguache Counties, Colorado: U.S. Geological Survey Scientific Investigations Map 3436, 3 sheets, scale 1:24,000, <https://doi.org/10.3133/sim3436>.