

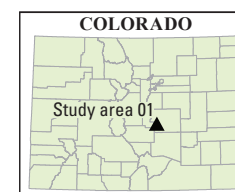
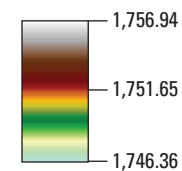


**INTERACTIVE
DATA LAYERS**

- Elevation map 2015
- Elevation map 2019
- Elevation-change map with 95% confidence limit
- Elevation-change map with 68% confidence limit

EXPLANATION

Elevation, in meters—Datum is North American Vertical Datum of 1988, Geoid 2012B



Publishing support provided by the
Science Publishing Network,
Denver Publishing Service Center
Manuscript approved for
publication April 15, 2020

Any use of trade, product, or firm names in this publication is for descriptive purposes only and does not imply endorsement by the U.S. Government

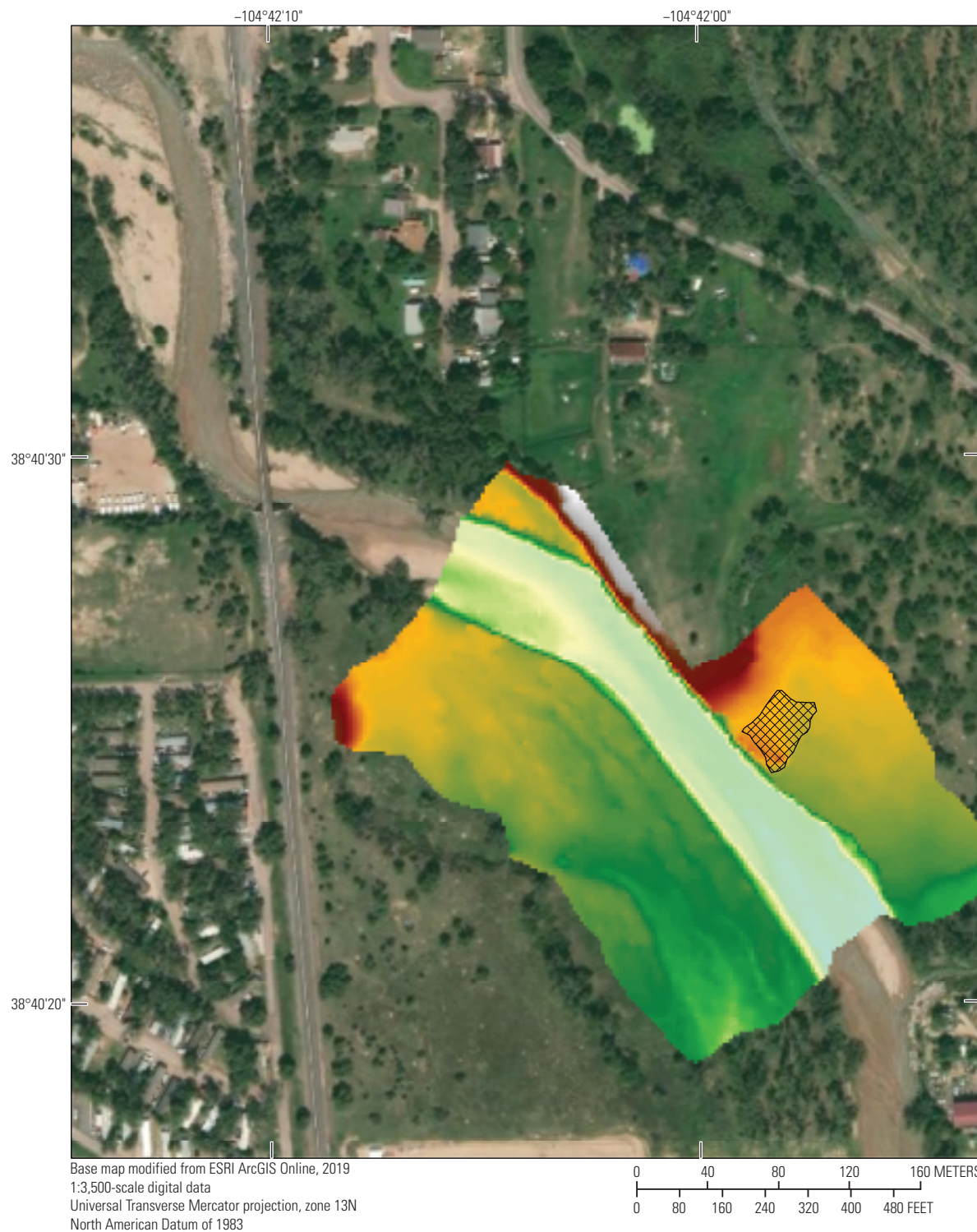
This map or plate is offered as an online-only, digital publication. Users should be aware that, because of differences in rendering processes and pixel resolution, some slight distortion of scale may occur when viewing it on a computer screen or when printing it on an electronic plotter, even when it is viewed or printed at its intended publication scale

Digital files available at <https://doi.org/10.3133/sim3456> and <https://doi.org/10.5066/P9R00MWF>

Suggested citation: Hempel, L.A., 2020, Elevation (2015, 2019) and elevation-change (2015–19) maps—Study area 01, sheet 1 in Elevation-change maps of Fountain Creek, southeastern Colorado, 2015–19: U.S. Geological Survey Scientific Investigations Map 3456, 10 sheets, 9 p., <https://doi.org/10.3133/sim3456>.

Associated data for this publication: Hempel, L.A., Clawges, R.M., and Bauer, M., 2020, Topographic and sediment size data from Fountain Creek between Colorado Springs and the confluence with the Arkansas River, Colorado, 2019: U.S. Geological Survey data release, <https://doi.org/10.5066/P9R00MWF>.

**Elevation (2015, 2019) and
Elevation-Change (2015–19) Maps—Study Area 01**
By
Laura A. Hempel
2020

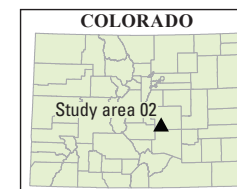
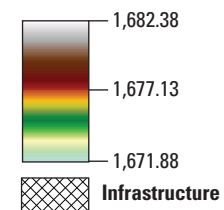


**INTERACTIVE
DATA LAYERS**

- Elevation map 2015
- Elevation map 2019
- Elevation-change map with 95% confidence limit
- Elevation-change map with 68% confidence limit

EXPLANATION

Elevation, in meters—Datum is North American Vertical Datum of 1988, Geoid 2012B



Publishing support provided by the
Science Publishing Network,
Denver Publishing Service Center
Manuscript approved for
publication April 15, 2020

Any use of trade, product, or firm names in this publication is for descriptive purposes only and does not imply endorsement by the U.S. Government

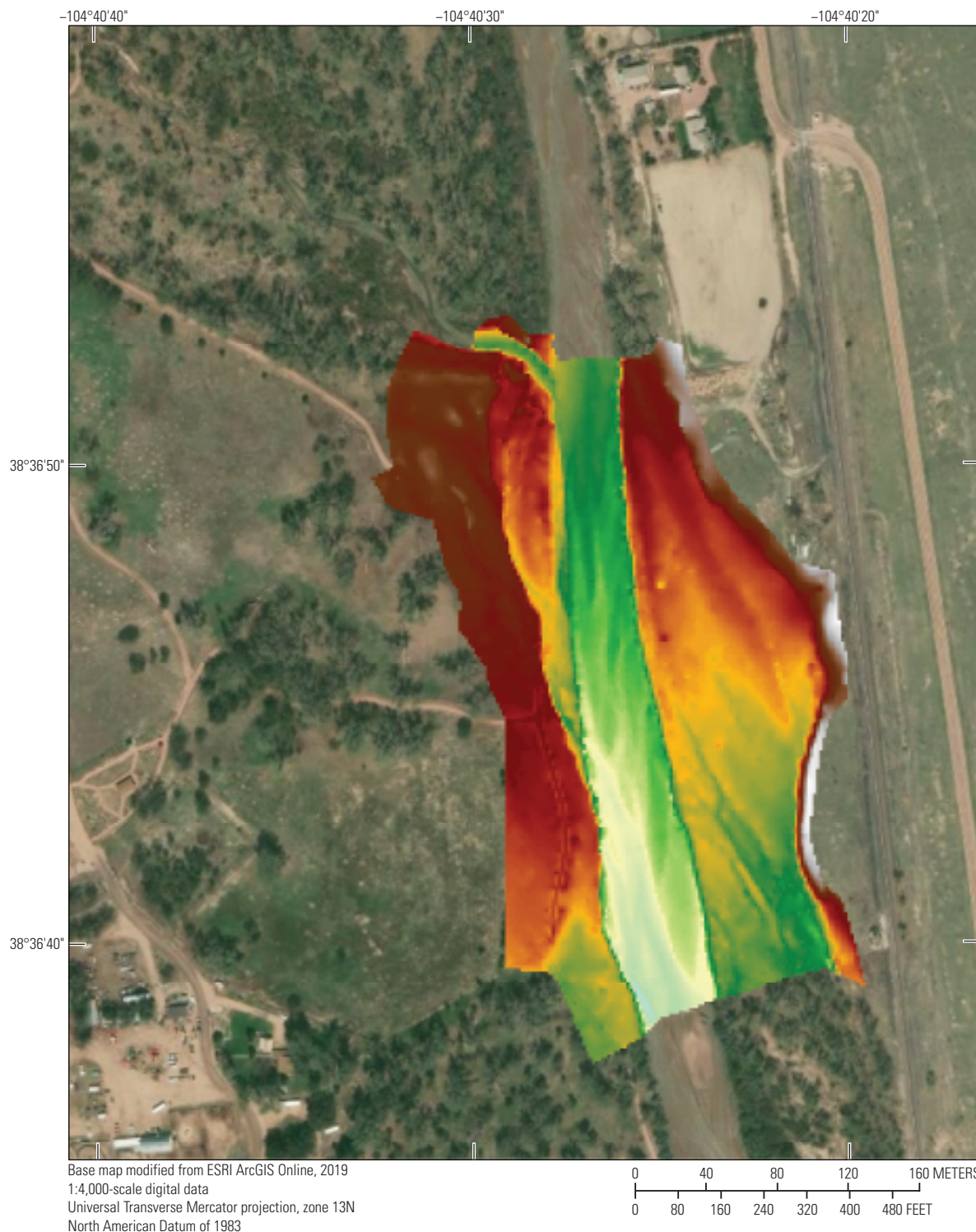
This map or plate is offered as an online-only, digital publication. Users should be aware that, because of differences in rendering processes and pixel resolution, some slight distortion of scale may occur when viewing it on a computer screen or when printing it on an electronic plotter, even when it is viewed or printed at its intended publication scale

Digital files available at <https://doi.org/10.3133/sim3456> and <https://doi.org/10.5066/P9R00MWF>

Suggested citation: Hempel, L.A., 2020, Elevation (2015, 2019) and elevation-change (2015–19) maps—Study area 02, sheet 2 in Elevation-change maps of Fountain Creek, southeastern Colorado, 2015–19: U.S. Geological Survey Scientific Investigations Map 3456, 10 sheets, 9 p., <https://doi.org/10.3133/sim3456>.

Associated data for this publication: Hempel, L.A., Clawges, R.M., and Bauer, M., 2020, Topographic and sediment size data from Fountain Creek between Colorado Springs and the confluence with the Arkansas River, Colorado, 2019: U.S. Geological Survey data release, <https://doi.org/10.5066/P9R00MWF>.

**Elevation (2015, 2019) and
Elevation-Change (2015–19) Maps—Study Area 02**
By
Laura A. Hempel
2020

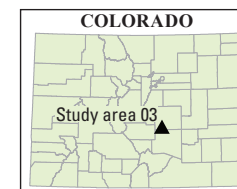
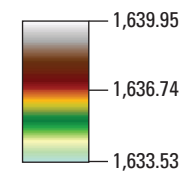


**INTERACTIVE
DATA LAYERS**

- Elevation map 2015
- Elevation map 2019
- Elevation-change map with 95% confidence limit
- Elevation-change map with 68% confidence limit

EXPLANATION

Elevation, in meters—Datum is North American Vertical Datum of 1988, Geoid 2012B



Publishing support provided by the
Science Publishing Network,
Denver Publishing Service Center
Manuscript approved for
publication April 15, 2020

Any use of trade, product, or firm names in this publication is for descriptive purposes only and does not imply endorsement by the U.S. Government

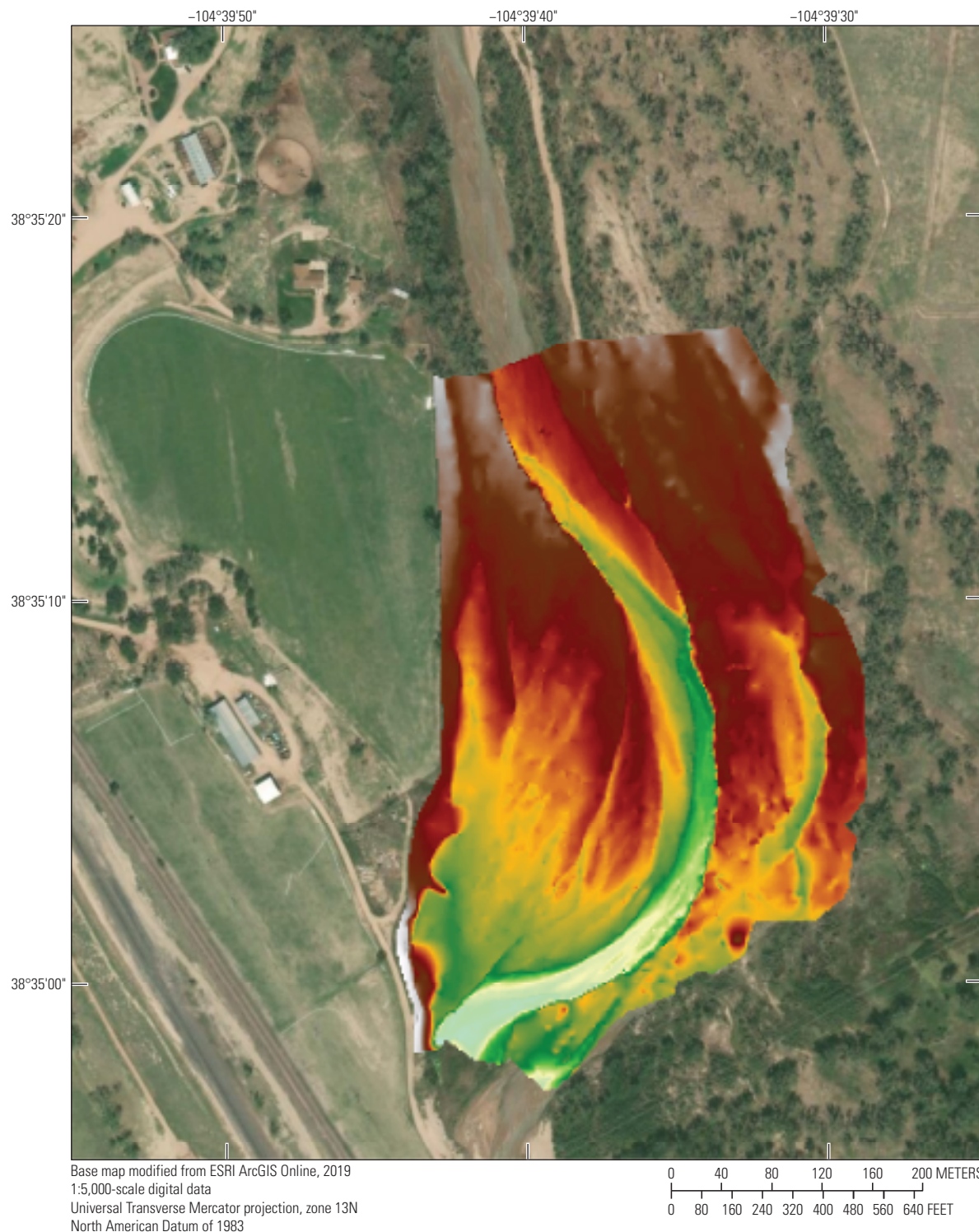
This map or plate is offered as an online-only, digital publication. Users should be aware that, because of differences in rendering processes and pixel resolution, some slight distortion of scale may occur when viewing it on a computer screen or when printing it on an electronic plotter, even when it is viewed or printed at its intended publication scale

Digital files available at <https://doi.org/10.3133/sim3456> and <https://doi.org/10.5066/P9R00MWF>

Suggested citation: Hempel, L.A., 2020, Elevation (2015, 2019) and elevation-change (2015–19) maps—Study area 03, sheet 3 in Elevation-change maps of Fountain Creek, southeastern Colorado, 2015–19: U.S. Geological Survey Scientific Investigations Map 3456, 10 sheets, 9 p., <https://doi.org/10.3133/sim3456>.

Associated data for this publication: Hempel, L.A., Clawges, R.M., and Bauer, M., 2020, Topographic and sediment size data from Fountain Creek between Colorado Springs and the confluence with the Arkansas River, Colorado, 2019: U.S. Geological Survey data release, <https://doi.org/10.5066/P9R00MWF>.

**Elevation (2015, 2019) and
Elevation-Change (2015–19) Maps—Study Area 03**
By
Laura A. Hempel
2020



Base map modified from ESRI ArcGIS Online, 2019
1:5,000-scale digital data
Universal Transverse Mercator projection, zone 13N
North American Datum of 1983

0 40 80 120 160 200 METERS
0 80 160 240 320 400 480 560 640 FEET

Elevation (2015, 2019) and Elevation-Change (2015–19) Maps—Study Area 04

By
Laura A. Hempel
2020

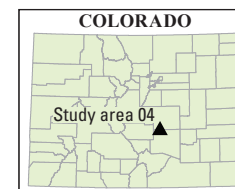
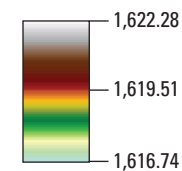
ISSN 2329-132X (online)
<https://doi.org/10.3133/sim3456>

INTERACTIVE DATA LAYERS

- Elevation map 2015
- Elevation map 2019
- Elevation-change map with 95% confidence limit
- Elevation-change map with 68% confidence limit

EXPLANATION

Elevation, in meters—Datum is North American
Vertical Datum of 1988, Geoid 2012B



Publishing support provided by the
Science Publishing Network,
Denver Publishing Service Center
Manuscript approved for
publication April 15, 2020

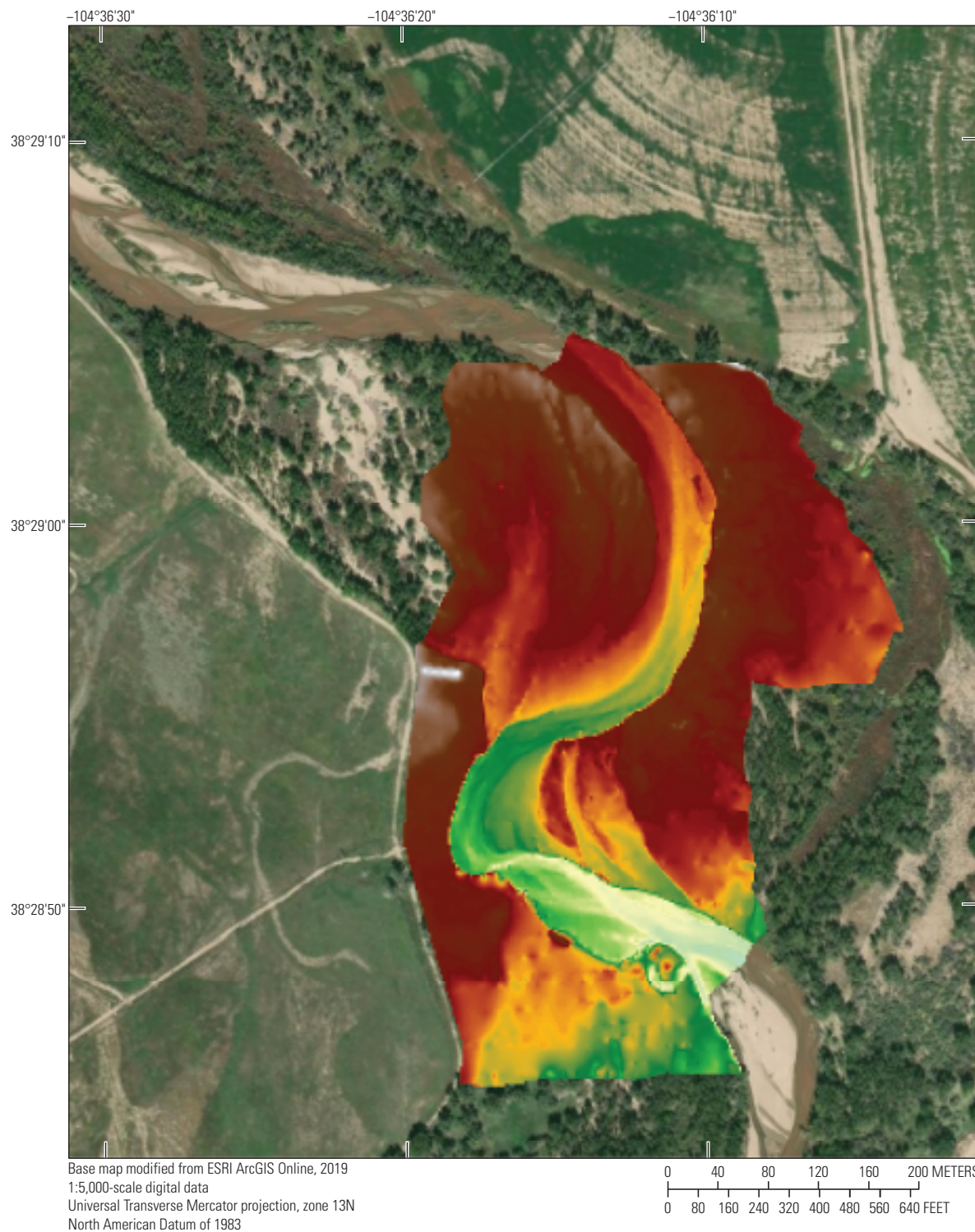
Any use of trade, product, or firm names in this publication is for
descriptive purposes only and does not imply endorsement by the
U.S. Government

This map or plate is offered as an online-only, digital publication.
Users should be aware that, because of differences in rendering
processes and pixel resolution, some slight distortion of scale may
occur when viewing it on a computer screen or when printing it on
an electronic plotter, even when it is viewed or printed at its intended
publication scale

Digital files available at <https://doi.org/10.3133/sim3456> and
<https://doi.org/10.5066/P9R00MWF>

Suggested citation: Hempel, L.A., 2020, Elevation (2015, 2019) and
elevation-change (2015–19) maps—Study area 04, sheet 4 in
Elevation-change maps of Fountain Creek, southeastern Colorado,
2015–19: U.S. Geological Survey Scientific Investigations Map 3456,
10 sheets, 9 p., <https://doi.org/10.3133/sim3456>.

Associated data for this publication: Hempel, L.A., Clawges, R.M., and
Bauer, M., 2020, Topographic and sediment size data from Fountain
Creek between Colorado Springs and the confluence with the
Arkansas River, Colorado, 2019: U.S. Geological Survey data release,
<https://doi.org/10.5066/P9R00MWF>.

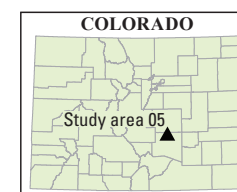
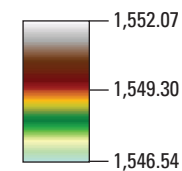


**INTERACTIVE
DATA LAYERS**

- Elevation map 2015
- Elevation map 2019
- Elevation-change map with 95% confidence limit
- Elevation-change map with 68% confidence limit

EXPLANATION

Elevation, in meters—Datum is North American Vertical Datum of 1988, Geoid 2012B



Publishing support provided by the
Science Publishing Network,
Denver Publishing Service Center
Manuscript approved for
publication April 15, 2020

Any use of trade, product, or firm names in this publication is for descriptive purposes only and does not imply endorsement by the U.S. Government

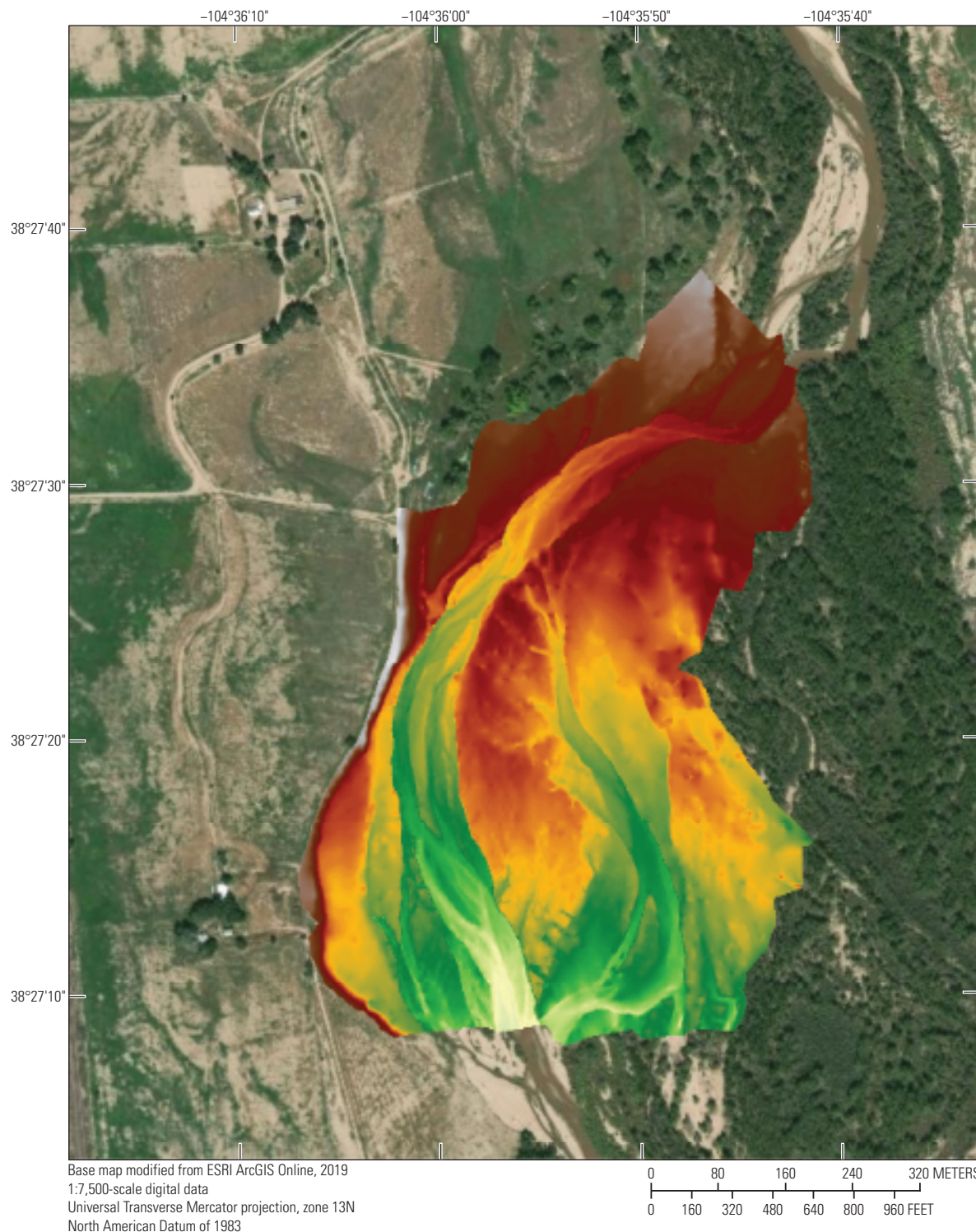
This map or plate is offered as an online-only, digital publication. Users should be aware that, because of differences in rendering processes and pixel resolution, some slight distortion of scale may occur when viewing it on a computer screen or when printing it on an electronic plotter, even when it is viewed or printed at its intended publication scale

Digital files available at <https://doi.org/10.3133/sim3456> and <https://doi.org/10.5066/P9R00MWF>

Suggested citation: Hempel, L.A., 2020, Elevation (2015, 2019) and elevation-change (2015–19) maps—Study area 05, sheet 5 in Elevation-change maps of Fountain Creek, southeastern Colorado, 2015–19: U.S. Geological Survey Scientific Investigations Map 3456, 10 sheets, 9 p., <https://doi.org/10.3133/sim3456>.

Associated data for this publication: Hempel, L.A., Clawges, R.M., and Bauer, M., 2020, Topographic and sediment size data from Fountain Creek between Colorado Springs and the confluence with the Arkansas River, Colorado, 2019: U.S. Geological Survey data release, <https://doi.org/10.5066/P9R00MWF>.

**Elevation (2015, 2019) and
Elevation-Change (2015–19) Maps—Study Area 05**
By
Laura A. Hempel
2020

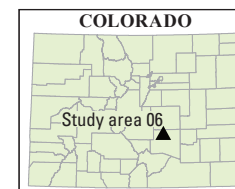
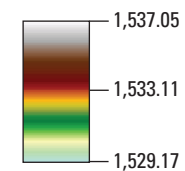


**INTERACTIVE
DATA LAYERS**

- Elevation map 2015
- Elevation map 2019
- Elevation-change map with 95% confidence limit
- Elevation-change map with 68% confidence limit

EXPLANATION

Elevation, in meters—Datum is North American Vertical Datum of 1988, Geoid 2012B



Publishing support provided by the
Science Publishing Network,
Denver Publishing Service Center
Manuscript approved for
publication April 15, 2020

Any use of trade, product, or firm names in this publication is for descriptive purposes only and does not imply endorsement by the U.S. Government

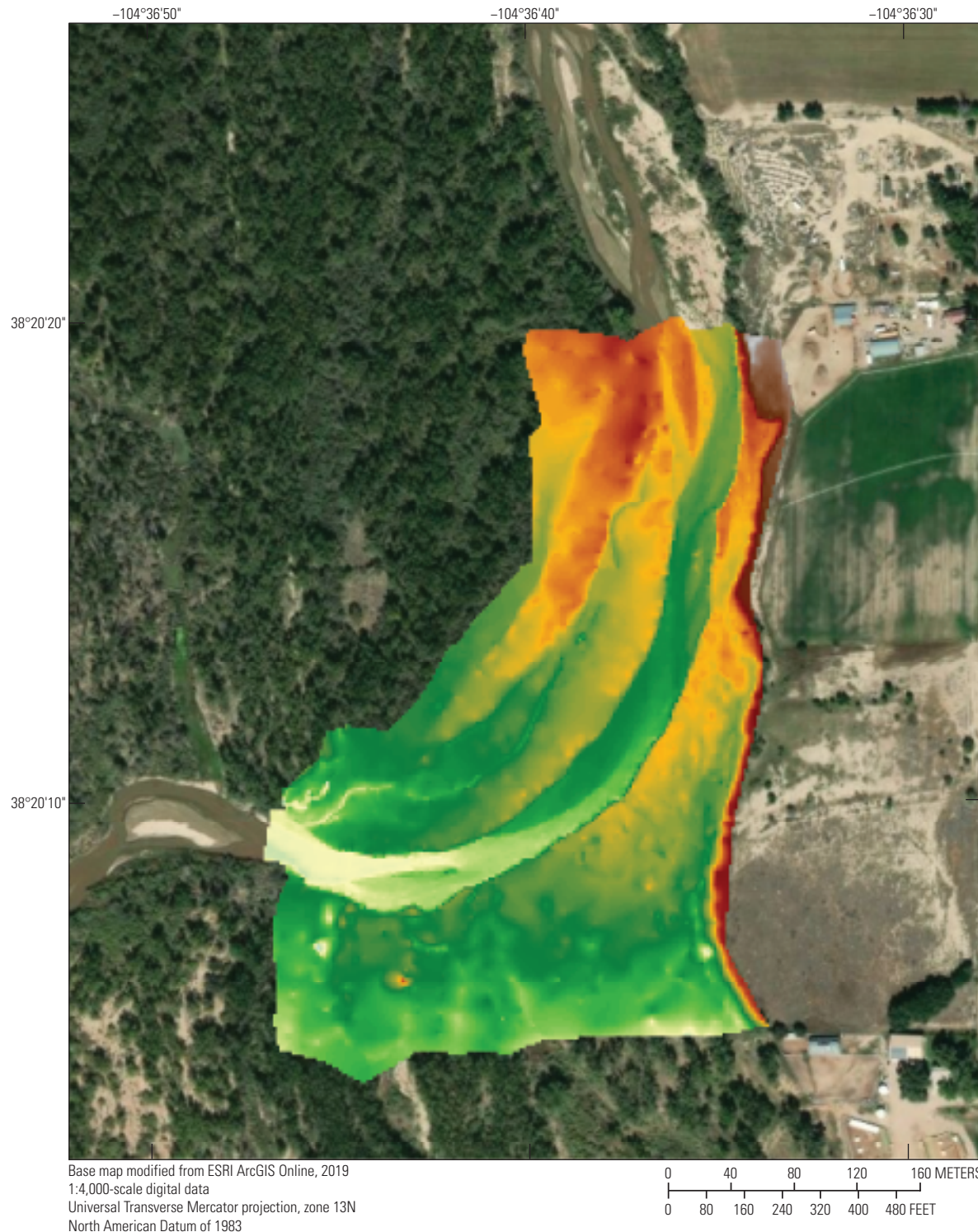
This map or plate is offered as an online-only, digital publication. Users should be aware that, because of differences in rendering processes and pixel resolution, some slight distortion of scale may occur when viewing it on a computer screen or when printing it on an electronic plotter, even when it is viewed or printed at its intended publication scale

Digital files available at <https://doi.org/10.3133/sim3456> and <https://doi.org/10.5066/P9R00MWF>

Suggested citation: Hempel, L.A., 2020, Elevation (2015, 2019) and elevation-change (2015–19) maps—Study area 06, sheet 6 in Elevation-change maps of Fountain Creek, southeastern Colorado, 2015–19: U.S. Geological Survey Scientific Investigations Map 3456, 10 sheets, 9 p., <https://doi.org/10.3133/sim3456>.

Associated data for this publication: Hempel, L.A., Clawges, R.M., and Bauer, M., 2020, Topographic and sediment size data from Fountain Creek between Colorado Springs and the confluence with the Arkansas River, Colorado, 2019: U.S. Geological Survey data release, <https://doi.org/10.5066/P9R00MWF>.

**Elevation (2015, 2019) and
Elevation-Change (2015–19) Maps—Study Area 06**
By
Laura A. Hempel
2020

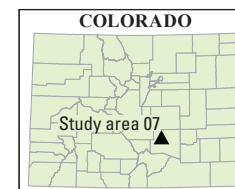
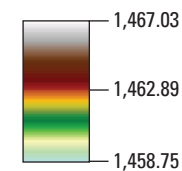


**INTERACTIVE
DATA LAYERS**

- Elevation map 2015
- Elevation map 2019
- Elevation-change map with 95% confidence limit
- Elevation-change map with 68% confidence limit

EXPLANATION

Elevation, in meters—Datum is North American Vertical Datum of 1988, Geoid 2012B



Publishing support provided by the
Science Publishing Network,
Denver Publishing Service Center
Manuscript approved for
publication April 15, 2020

**Elevation (2015, 2019) and
Elevation-Change (2015–19) Maps—Study Area 07**
By
Laura A. Hempel
2020

ISSN 2329-132X (online)
<https://doi.org/10.3133/sim3456>

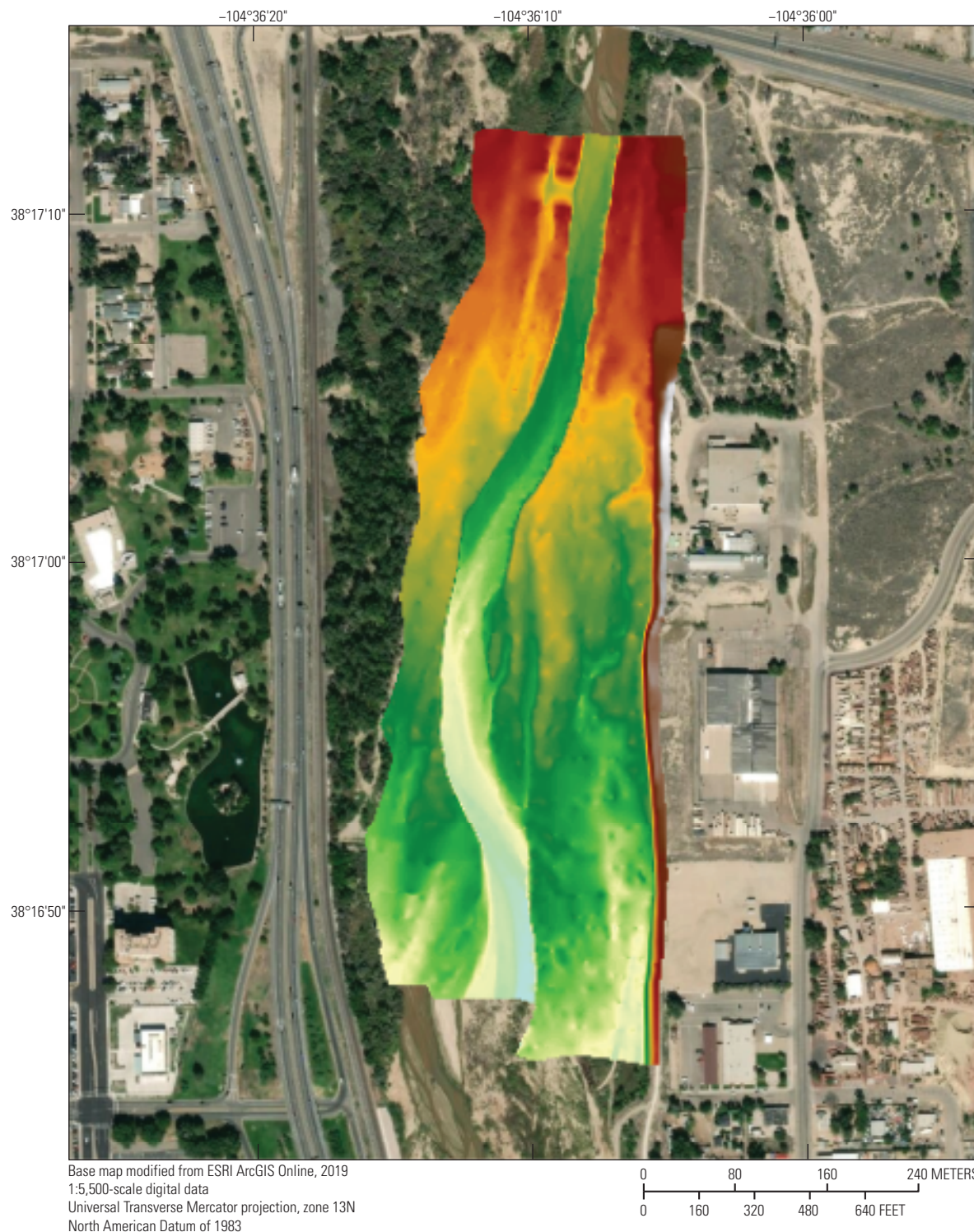
Any use of trade, product, or firm names in this publication is for descriptive purposes only and does not imply endorsement by the U.S. Government

This map or plate is offered as an online-only, digital publication. Users should be aware that, because of differences in rendering processes and pixel resolution, some slight distortion of scale may occur when viewing it on a computer screen or when printing it on an electronic plotter, even when it is viewed or printed at its intended publication scale

Digital files available at <https://doi.org/10.3133/sim3456> and <https://doi.org/10.5066/P9R00MWF>

Suggested citation: Hempel, L.A., 2020, Elevation (2015, 2019) and elevation-change (2015–19) maps—Study area 07, sheet 7 in Elevation-change maps of Fountain Creek, southeastern Colorado, 2015–19: U.S. Geological Survey Scientific Investigations Map 3456, 10 sheets, 9 p., <https://doi.org/10.3133/sim3456>.

Associated data for this publication: Hempel, L.A., Clawges, R.M., and Bauer, M., 2020, Topographic and sediment size data from Fountain Creek between Colorado Springs and the confluence with the Arkansas River, Colorado, 2019: U.S. Geological Survey data release, <https://doi.org/10.5066/P9R00MWF>.

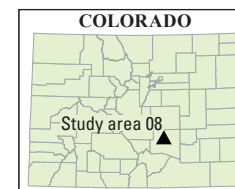
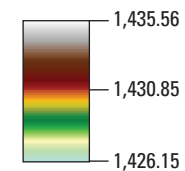


**INTERACTIVE
DATA LAYERS**

- Elevation map 2015
- Elevation map 2019
- Elevation-change map with 95% confidence limit
- Elevation-change map with 68% confidence limit

EXPLANATION

Elevation, in meters—Datum is North American
Vertical Datum of 1988, Geoid 2012B



Publishing support provided by the
Science Publishing Network,
Denver Publishing Service Center
Manuscript approved for
publication April 15, 2020

Any use of trade, product, or firm names in this publication is for
descriptive purposes only and does not imply endorsement by the
U.S. Government

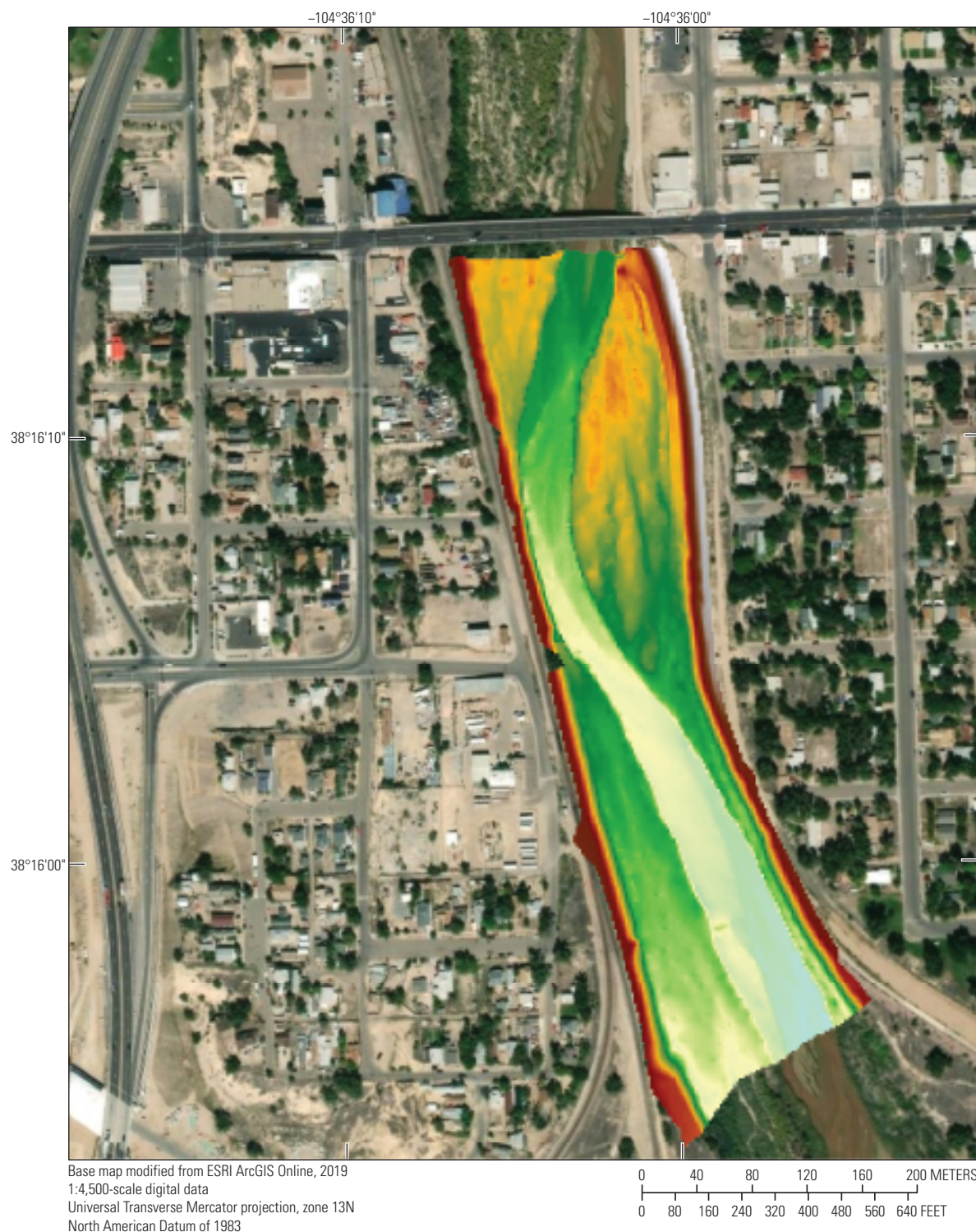
This map or plate is offered as an online-only, digital publication.
Users should be aware that, because of differences in rendering
processes and pixel resolution, some slight distortion of scale may
occur when viewing it on a computer screen or when printing it on
an electronic plotter, even when it is viewed or printed at its intended
publication scale

Digital files available at <https://doi.org/10.3133/sim3456> and
<https://doi.org/10.5066/P9R00MWF>

Suggested citation: Hempel, L.A., 2020, Elevation (2015, 2019) and
elevation-change (2015–19) maps—Study area 08, sheet 8 *in*
Elevation-change maps of Fountain Creek, southeastern Colorado,
2015–19: U.S. Geological Survey Scientific Investigations Map 3456,
10 sheets, 9 p., <https://doi.org/10.3133/sim3456>.

Associated data for this publication: Hempel, L.A., Clawges, R.M., and
Bauer, M., 2020, Topographic and sediment size data from Fountain
Creek between Colorado Springs and the confluence with the
Arkansas River, Colorado, 2019: U.S. Geological Survey data release,
<https://doi.org/10.5066/P9R00MWF>.

**Elevation (2015, 2019) and
Elevation-Change (2015–19) Maps—Study Area 08**
By
Laura A. Hempel
2020

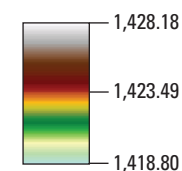


INTERACTIVE DATA LAYERS

- Elevation map 2015
- Elevation map 2019
- Elevation-change map with 95% confidence limit
- Elevation-change map with 68% confidence limit

EXPLANATION

Elevation, in meters—Datum is North American Vertical Datum of 1988, Geoid 2012B



Publishing support provided by the
Science Publishing Network,
Denver Publishing Service Center
Manuscript approved for
publication April 15, 2020

Any use of trade, product, or firm names in this publication is for descriptive purposes only and does not imply endorsement by the U.S. Government

This map or plate is offered as an online-only, digital publication. Users should be aware that, because of differences in rendering processes and pixel resolution, some slight distortion of scale may occur when viewing it on a computer screen or when printing it on an electronic plotter, even when it is viewed or printed at its intended publication scale

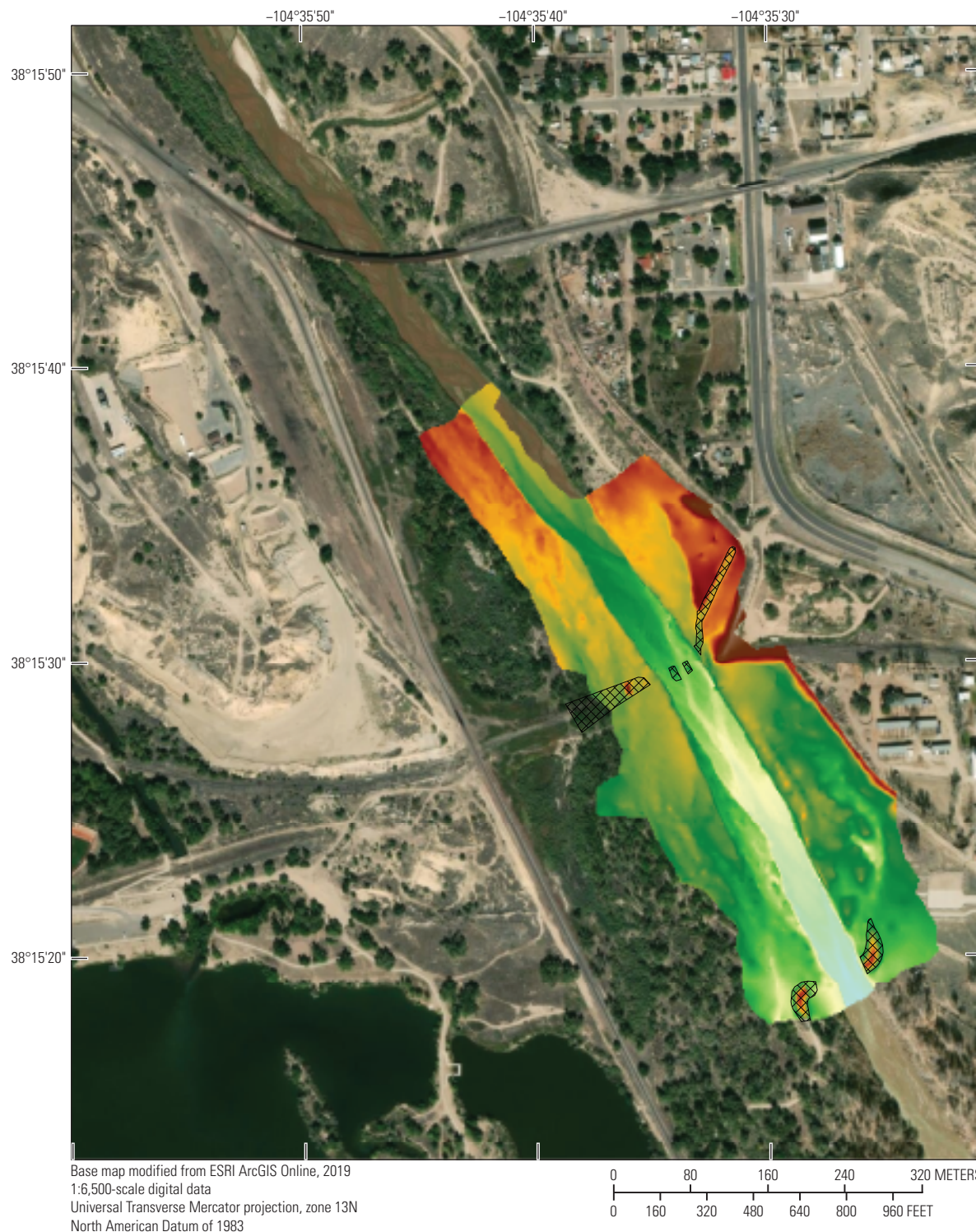
Digital files available at <https://doi.org/10.3133/sim3456> and <https://doi.org/10.5066/P9R00MWF>

Suggested citation: Hempel, L.A., 2020, Elevation (2015, 2019) and elevation-change (2015–19) maps—Study area 09, sheet 9 in Elevation-change maps of Fountain Creek, southeastern Colorado, 2015–19: U.S. Geological Survey Scientific Investigations Map 3456, 10 sheets, 9 p., <https://doi.org/10.3133/sim3456>.

Associated data for this publication: Hempel, L.A., Clawges, R.M., and Bauer, M., 2020, Topographic and sediment size data from Fountain Creek between Colorado Springs and the confluence with the Arkansas River, Colorado, 2019: U.S. Geological Survey data release, <https://doi.org/10.5066/P9R00MWF>.

Elevation (2015, 2019) and Elevation-Change (2015–19) Maps—Study Area 09

By
Laura A. Hempel
2020

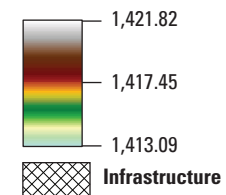


**INTERACTIVE
DATA LAYERS**

- Elevation map 2015
- Elevation map 2019
- Elevation-change map with 95% confidence limit
- Elevation-change map with 68% confidence limit

EXPLANATION

Elevation, in meters—Datum is North American Vertical Datum of 1988, Geoid 2012B



Publishing support provided by the
Science Publishing Network,
Denver Publishing Service Center
Manuscript approved for
publication April 15, 2020

Any use of trade, product, or firm names in this publication is for descriptive purposes only and does not imply endorsement by the U.S. Government

This map or plate is offered as an online-only, digital publication. Users should be aware that, because of differences in rendering processes and pixel resolution, some slight distortion of scale may occur when viewing it on a computer screen or when printing it on an electronic plotter, even when it is viewed or printed at its intended publication scale

Digital files available at <https://doi.org/10.3133/sim3456> and <https://doi.org/10.5066/P9R00MWF>

Suggested citation: Hempel, L.A., 2020, Elevation (2015, 2019) and elevation-change (2015–19) maps—Study area 10, sheet 10 in Elevation-change maps of Fountain Creek, southeastern Colorado, 2015–19: U.S. Geological Survey Scientific Investigations Map 3456, 10 sheets, 9 p., <https://doi.org/10.3133/sim3456>.

Associated data for this publication: Hempel, L.A., Clawges, R.M., and Bauer, M., 2020, Topographic and sediment size data from Fountain Creek between Colorado Springs and the confluence with the Arkansas River, Colorado, 2019: U.S. Geological Survey data release, <https://doi.org/10.5066/P9R00MWF>.

**Elevation (2015, 2019) and
Elevation-Change (2015–19) Maps—Study Area 10**
By
Laura A. Hempel
2020

ISSN 2329-132X (online)
<https://doi.org/10.3133/sim3456>