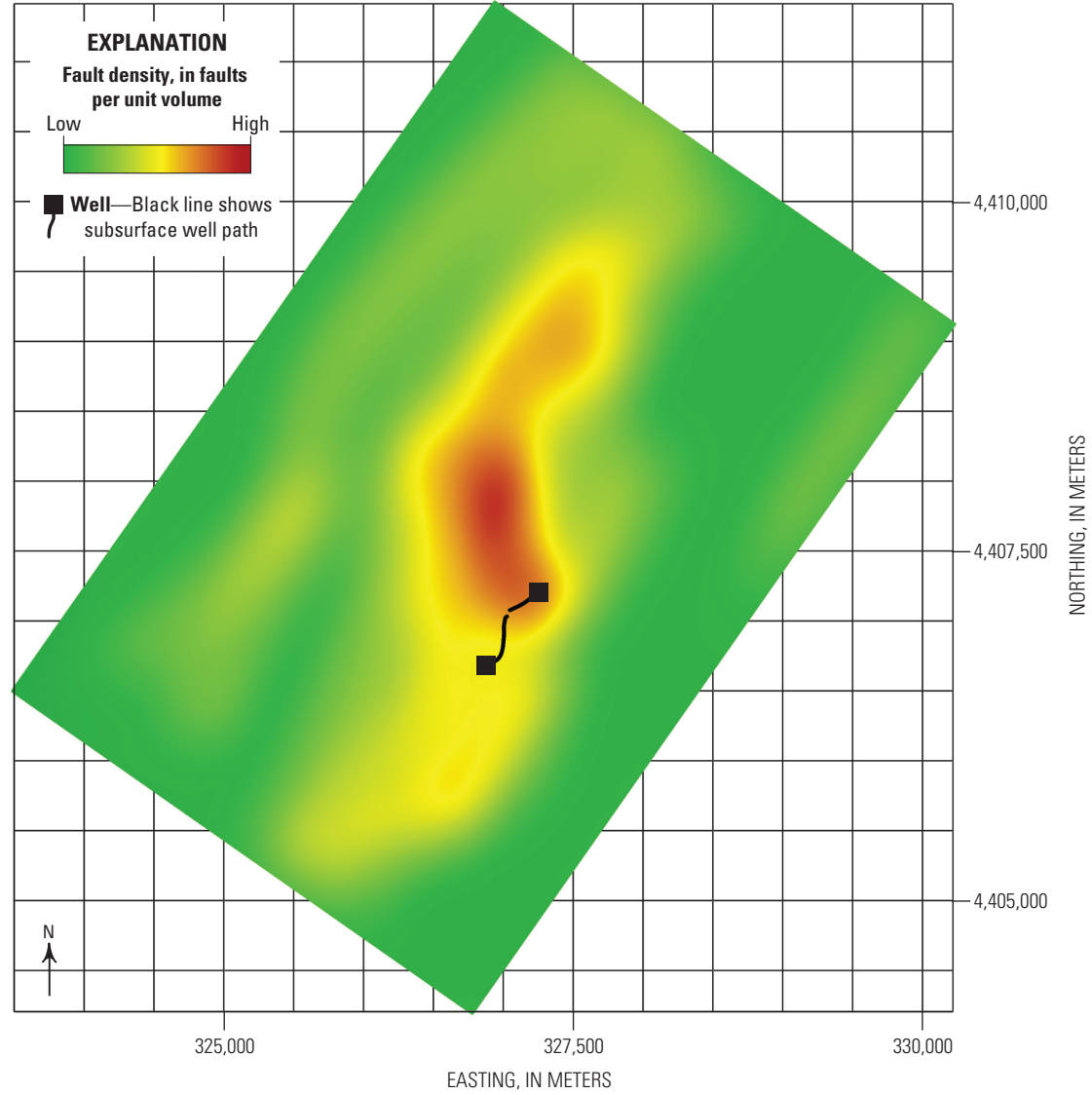
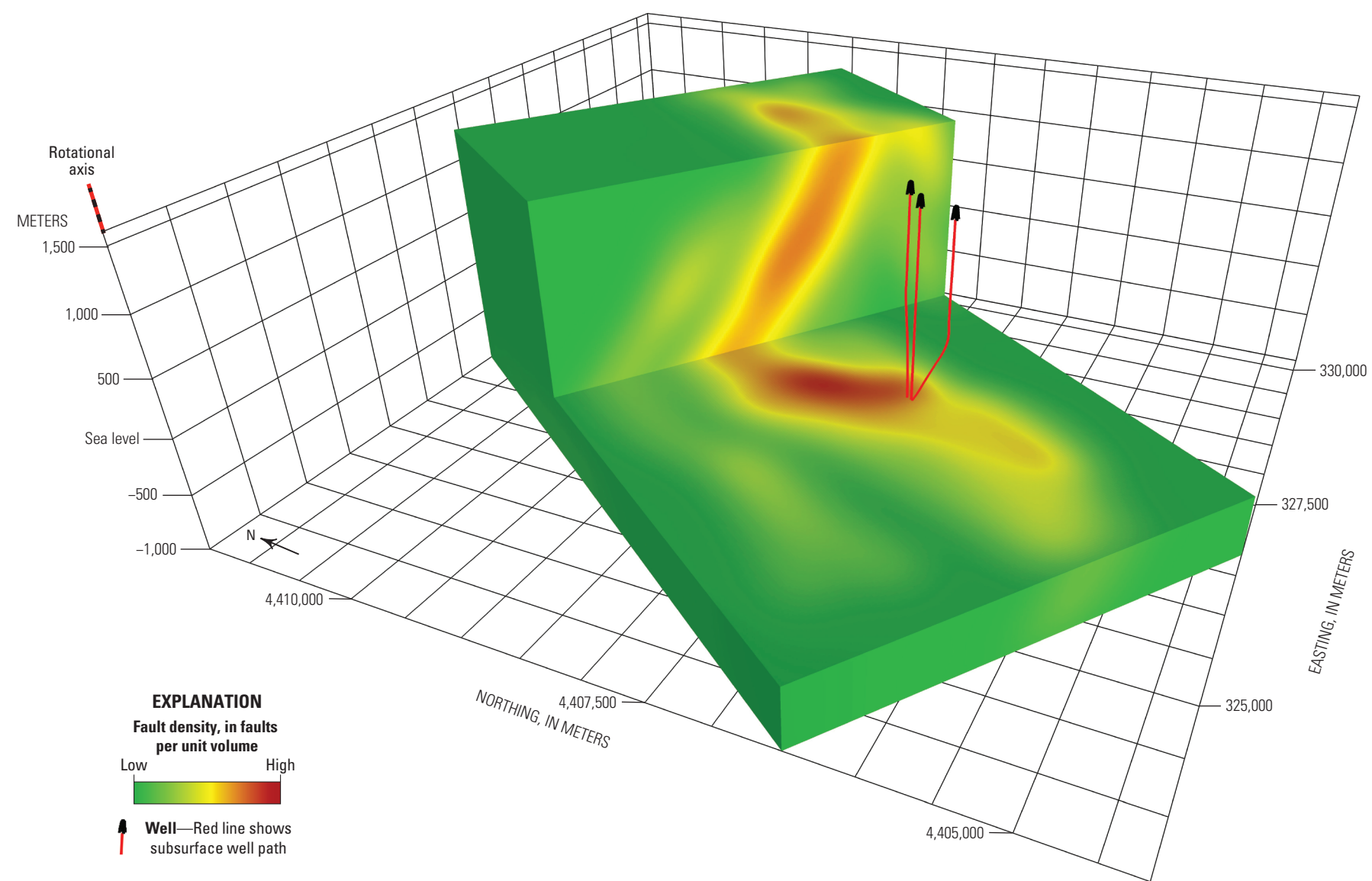
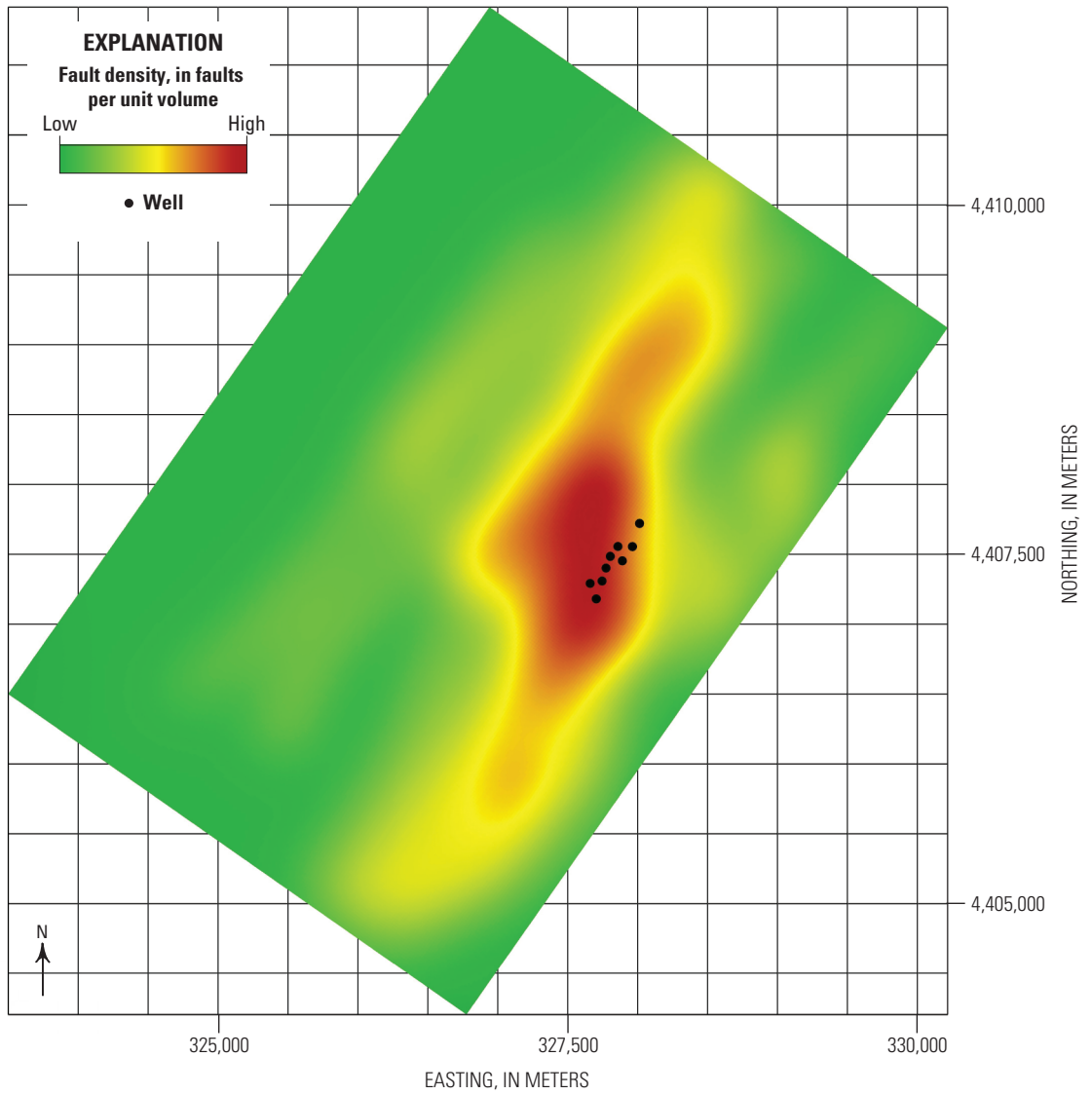
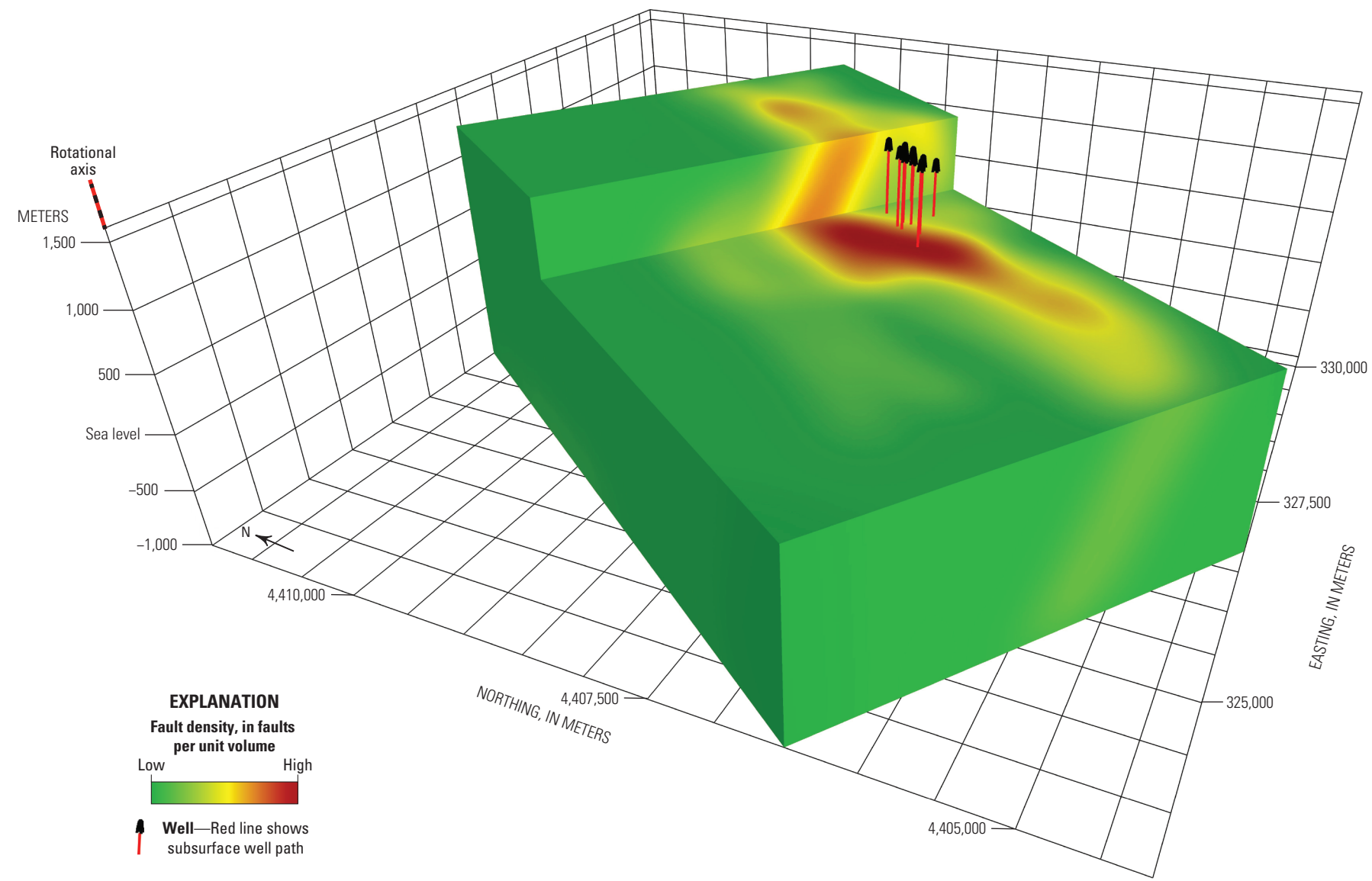
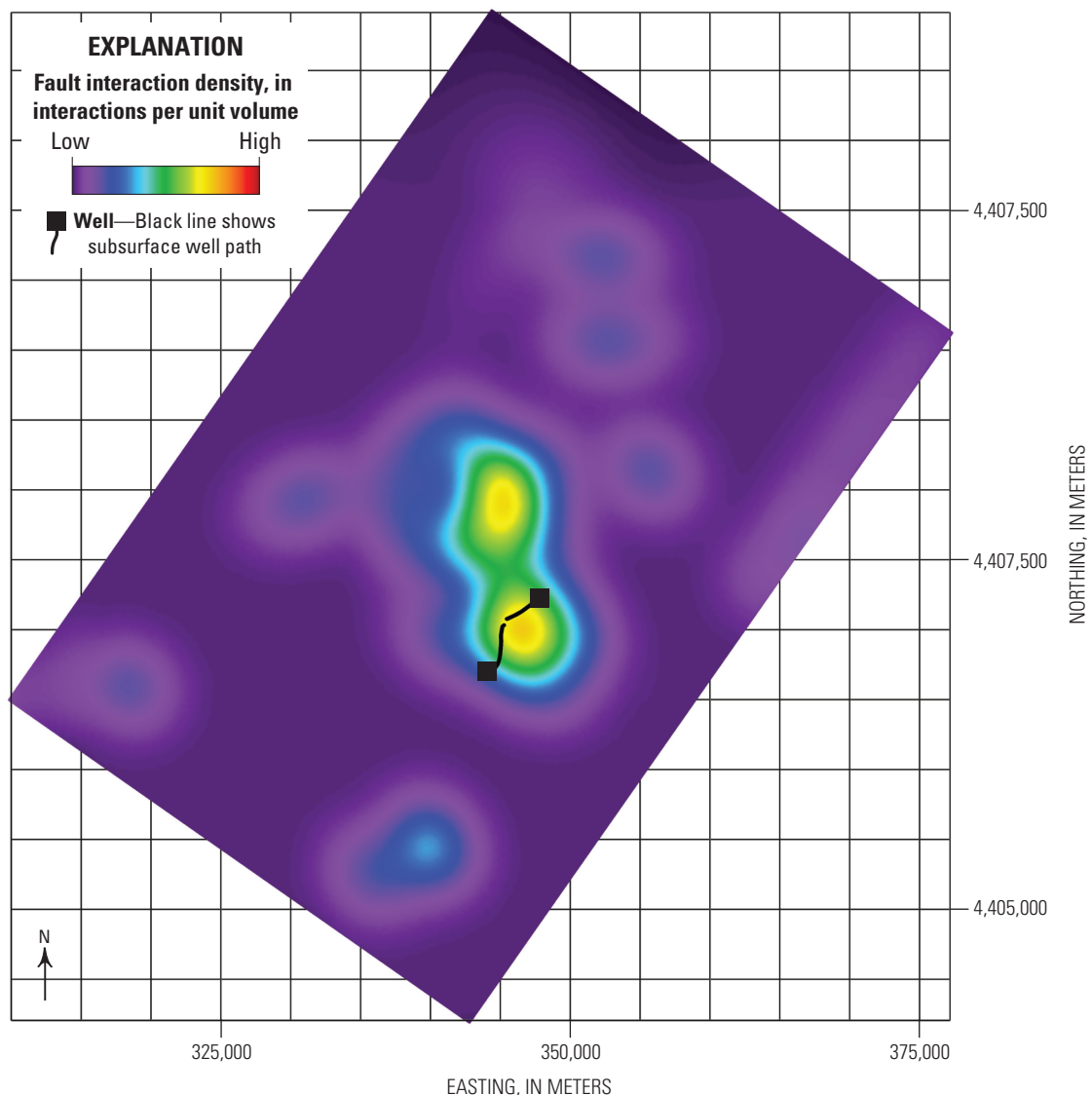
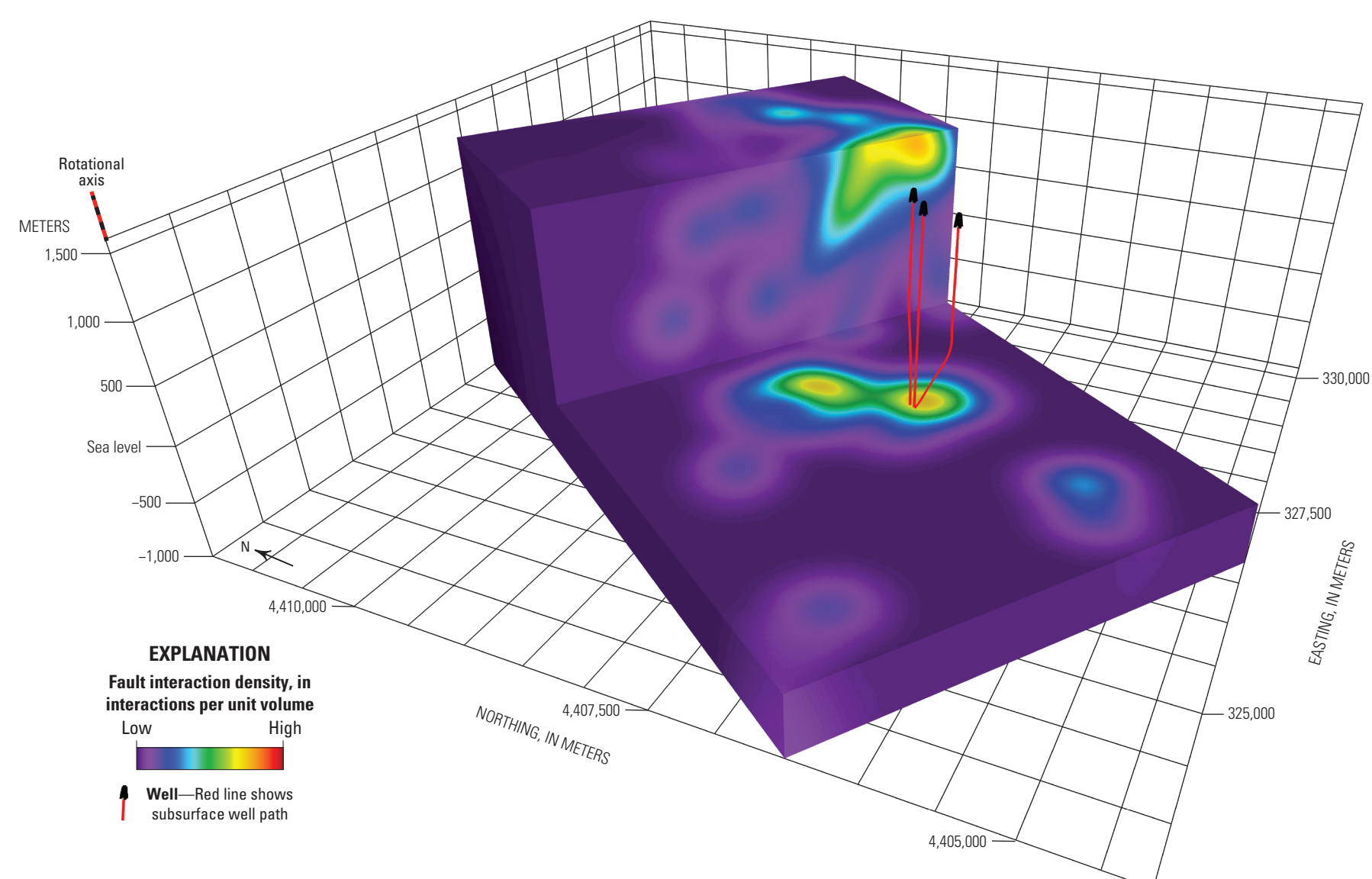
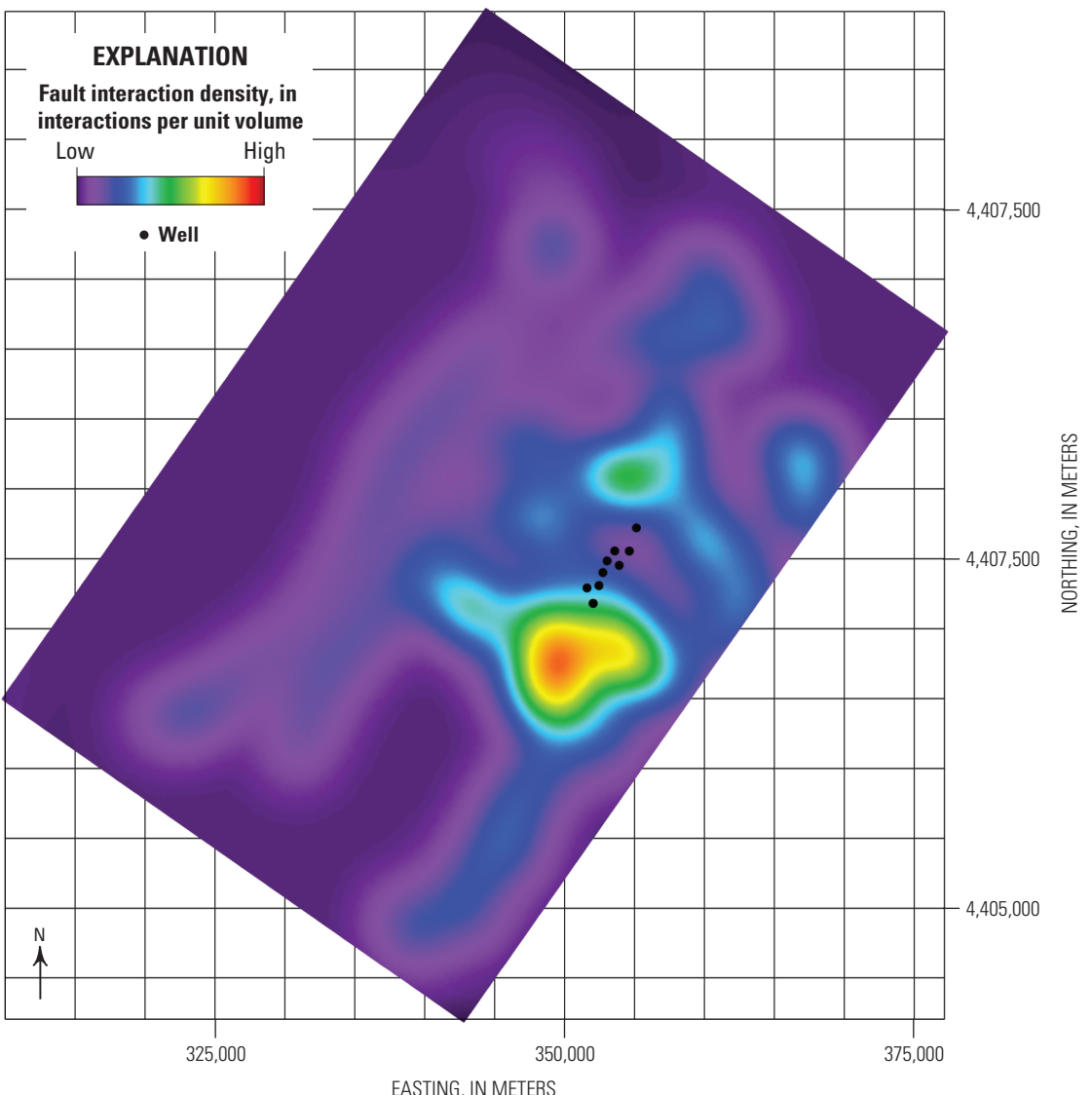
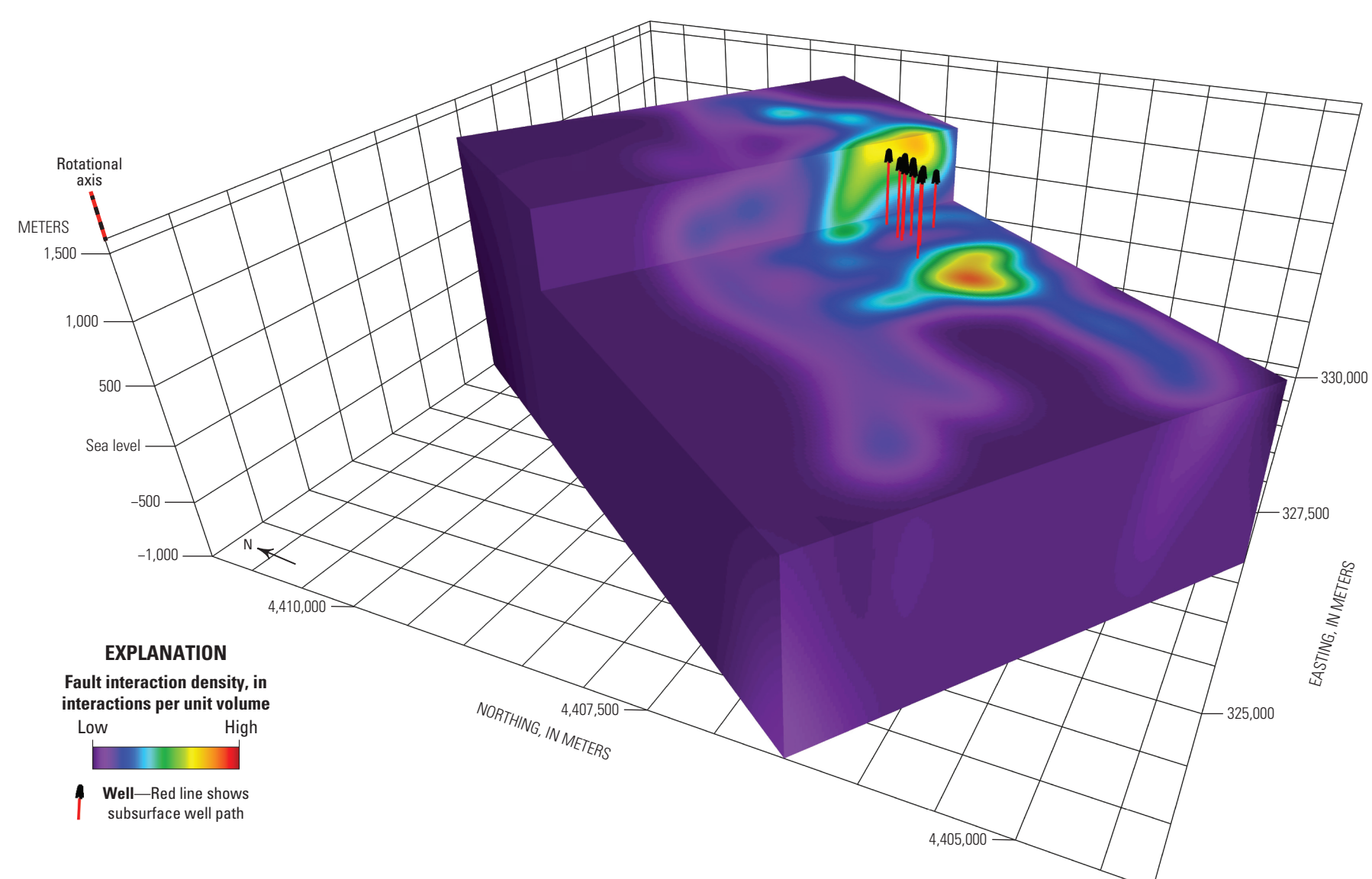


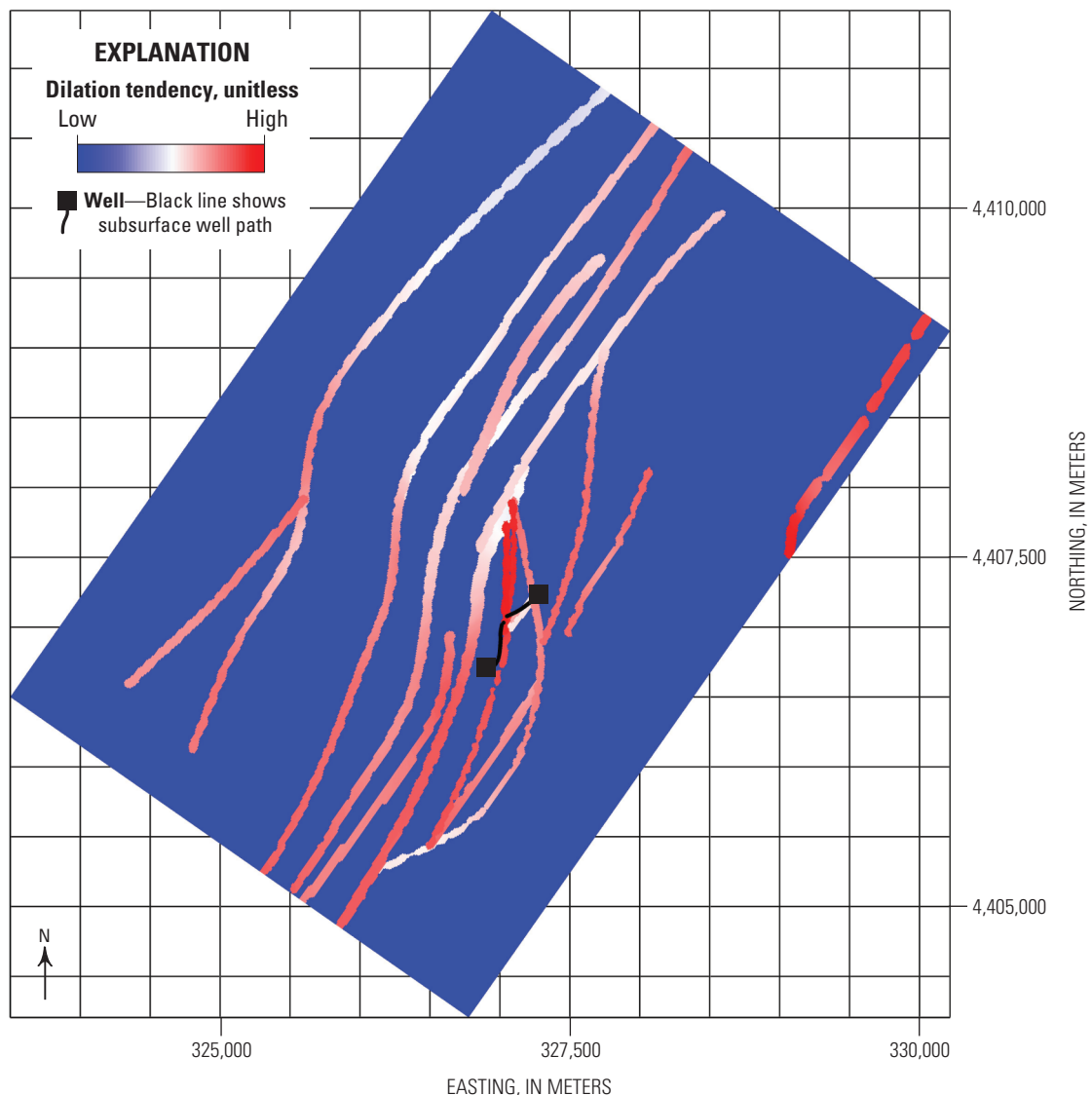
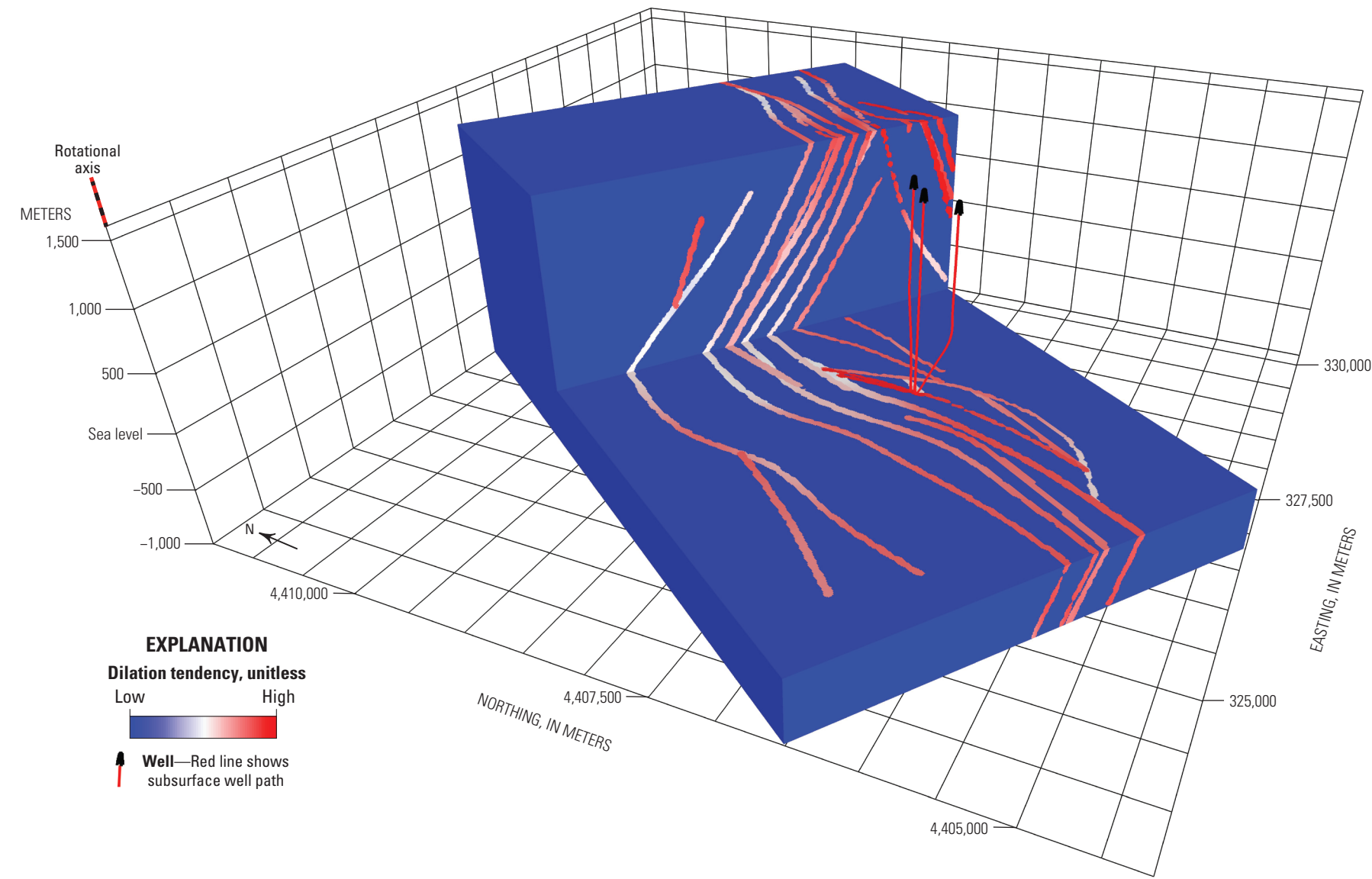
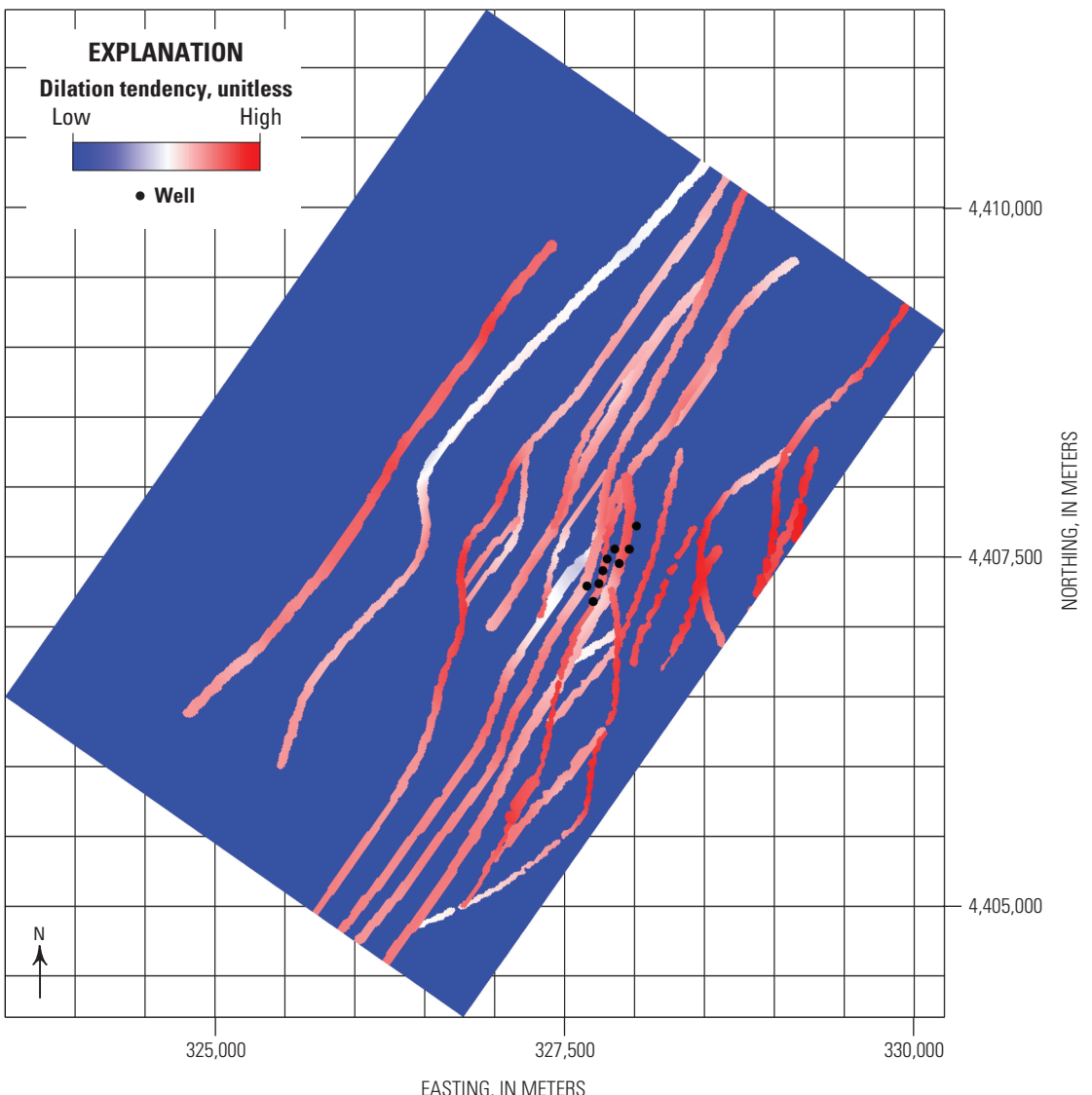
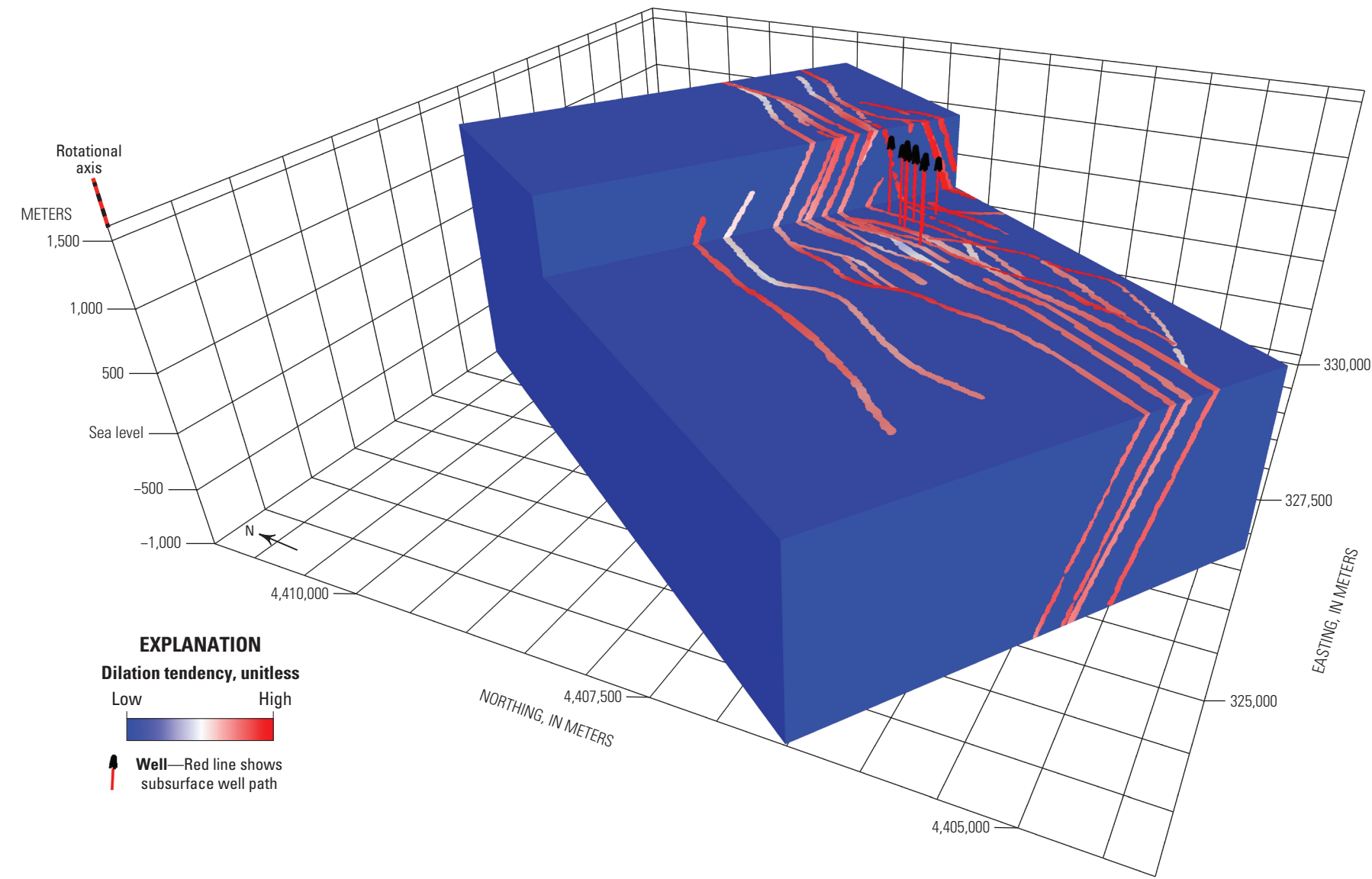
Spatial Density of Faults



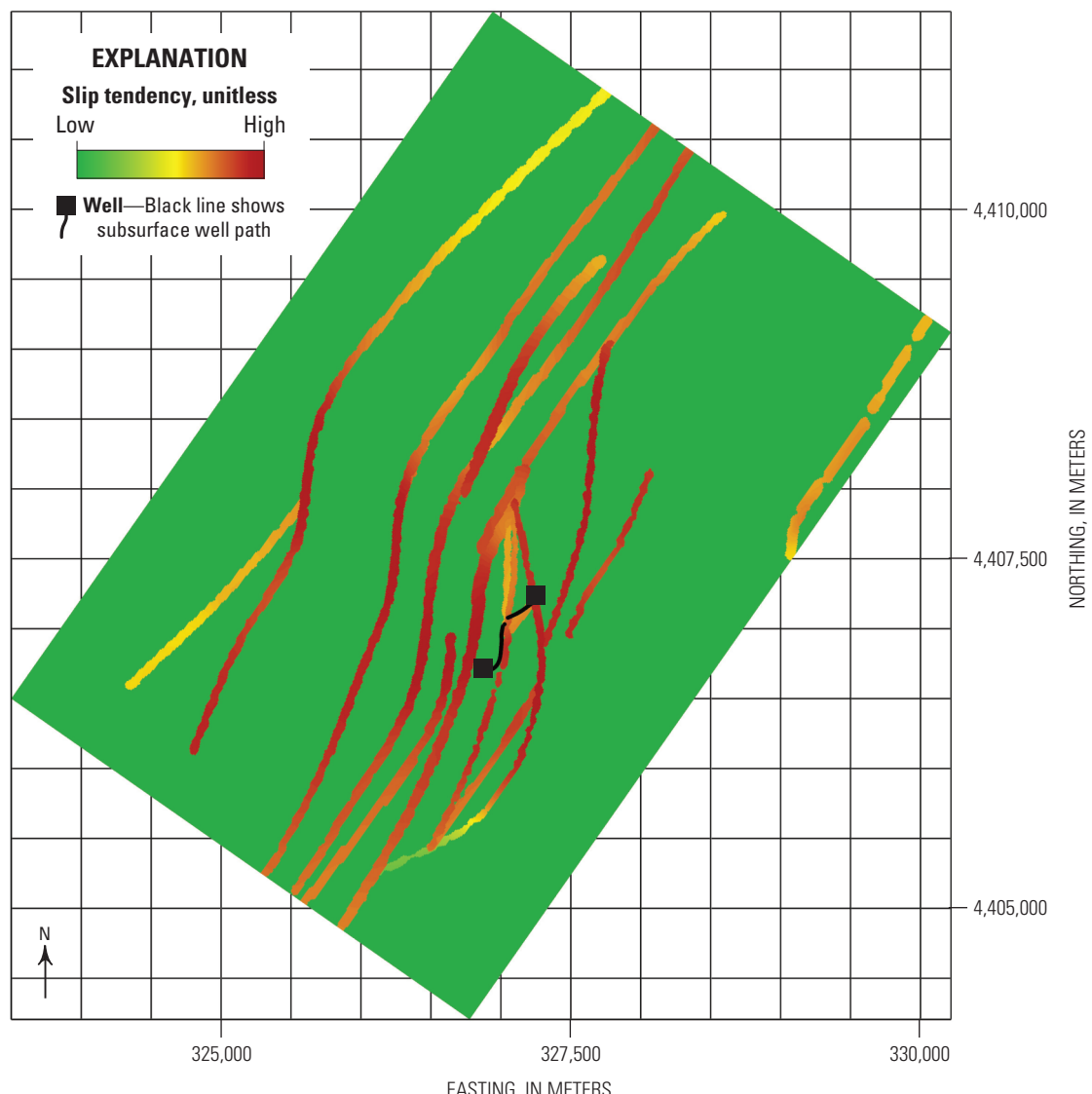
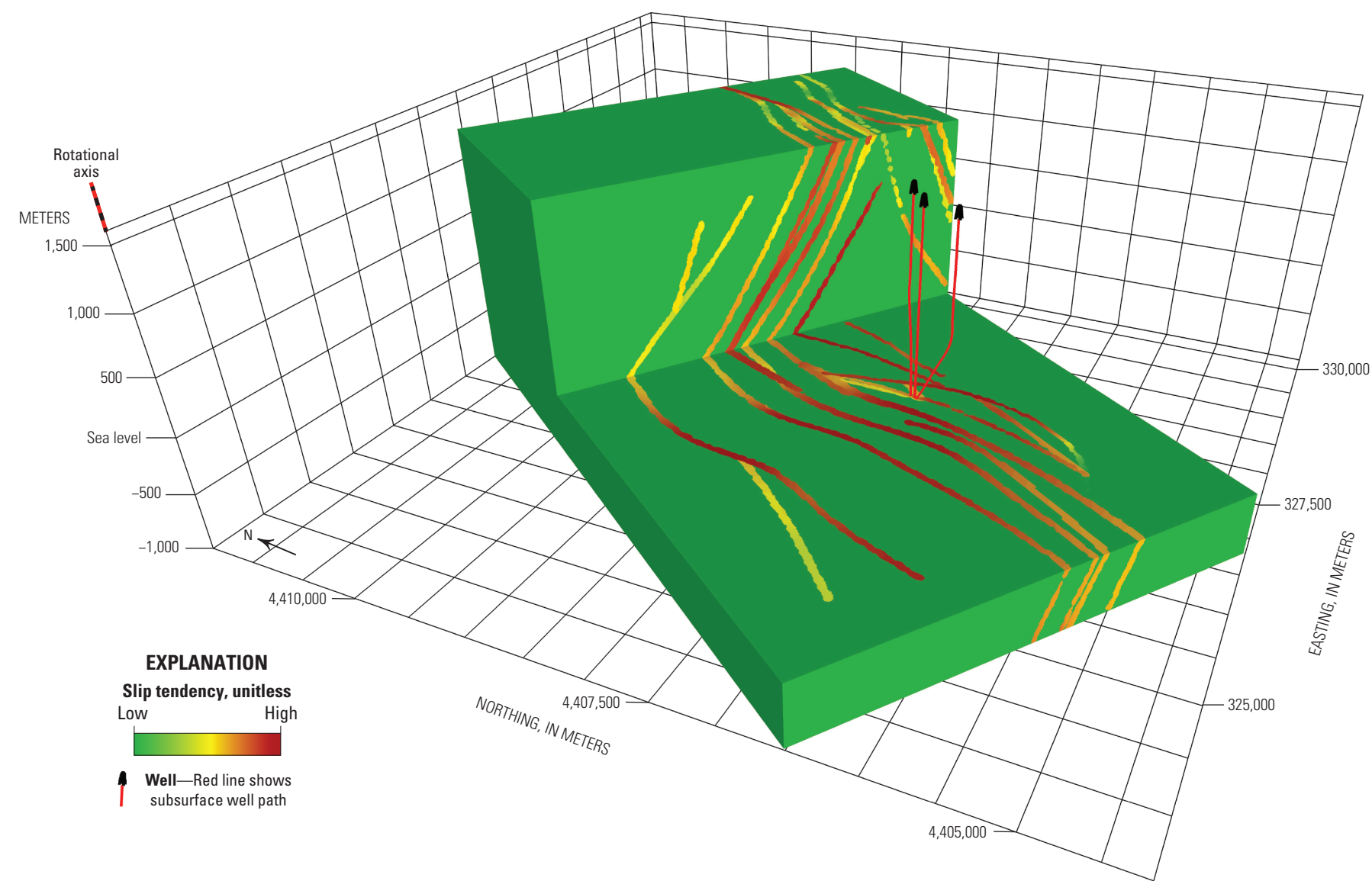
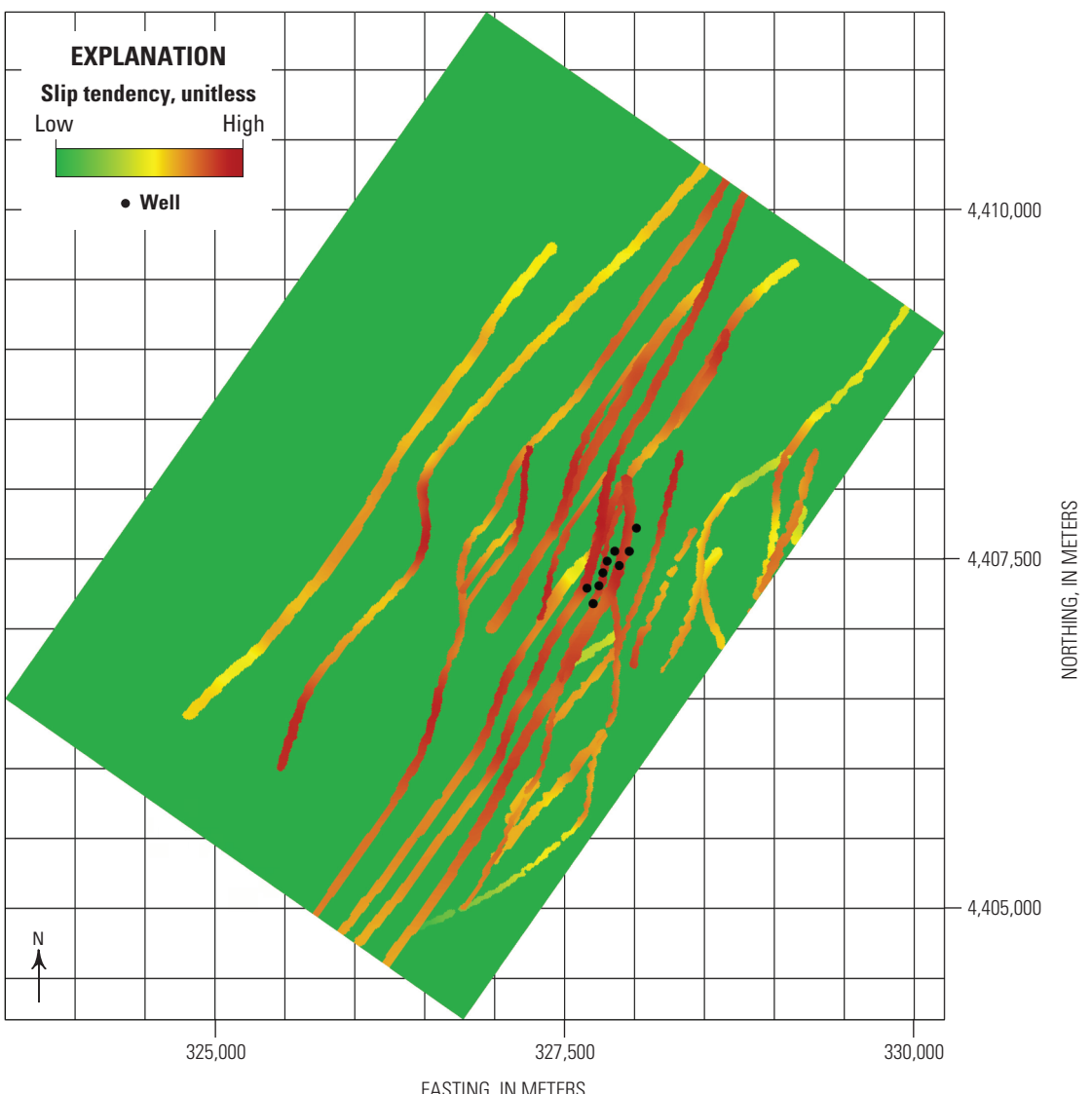
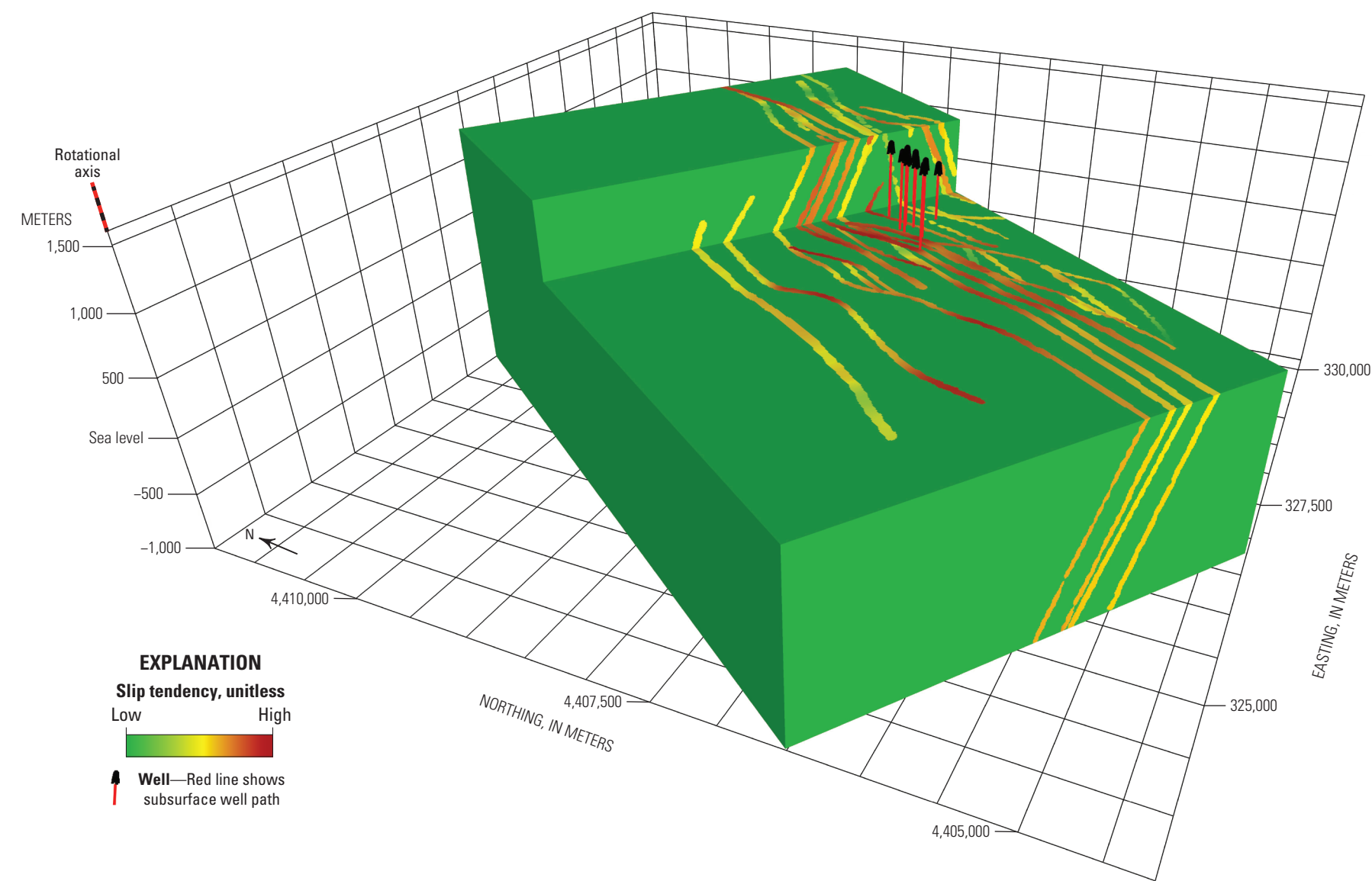
Spatial Density of Fault Intersections and Terminations



Dilation Tendency on Faults



Slip Tendency on Faults



Three-Dimensional Views of Structural Factors and Geothermal Production Wells in the Brady Geothermal Area, Nevada

By
Drew L. Siler,¹ James E. Faulds,² Nicholas H. Hinz,³ and John H. Queen⁴
2021

¹U.S. Geological Survey
²Nevada Bureau of Mines and Geology
³Geospatial Geothermal Group, Inc.
⁴W.G. Geophysical, Inc.

Any use of trade, product, or firm names in this publication is for descriptive purposes only and does not imply endorsement by the U.S. Government.
This map is posted online as an electronic-only, digital publication. Users should be aware that, because of differences in rendering processes and pixel resolution, some slight distortions of scale may occur when viewing it on a computer screen or when printing it on an electronic device, even when it is viewed or printed at its intended publication scale.
Digital files available at <https://doi.org/10.3133/SI3469>
Suggested citation: Siler, D.L., Faulds, J.E., Hinz, N.H., and Queen, J.H., 2021, Three-dimensional views of structural factors and geothermal production wells in the Brady geothermal area, Nevada, sheet 2 of 2, in Siler, D.L., Faulds, J.E., Hinz, N.H., and Queen, J.H., Three-dimensional geologic map of the Brady geothermal area, Nevada, U.S. Geological Survey Scientific Investigations Map 3469, 2 sheets, pamphlet 2 p., <https://doi.org/10.3133/SI3469>
ISBN 2251-1023 (online)
<https://doi.org/10.3133/SI3469>