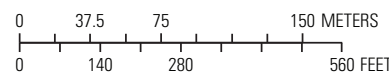


Base map modified from ESRI ArcGIS Online, accessed 2019 and 2021
1:4,000-scale digital data
Universal Transverse Mercator projection, zone 13N
North American Datum of 1983



INTERACTIVE DATA LAYERS

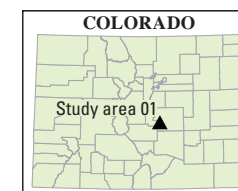
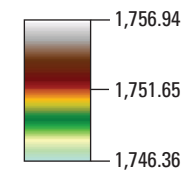
Elevation map 2015 (Hempel and
others, 2020b)

Elevation map 2020

Elevation-change map with
95% confidence limit

EXPLANATION

Elevation, in meters—Datum is North American
Vertical Datum of 1988, Geoid 2012B



Publishing support provided by the
Science Publishing Network,
Denver Publishing Service Center
Manuscript approved for
publication September 17, 2021

Any use of trade, product, or firm names in this publication is for
descriptive purposes only and does not imply endorsement by the
U.S. Government

This map or plate is offered as an online-only, digital publication.
Users should be aware that, because of differences in rendering
processes and pixel resolution, some slight distortion of scale may
occur when viewing it on a computer screen or when printing it on an
electronic plotter, even when it is viewed or printed at its intended
publication scale

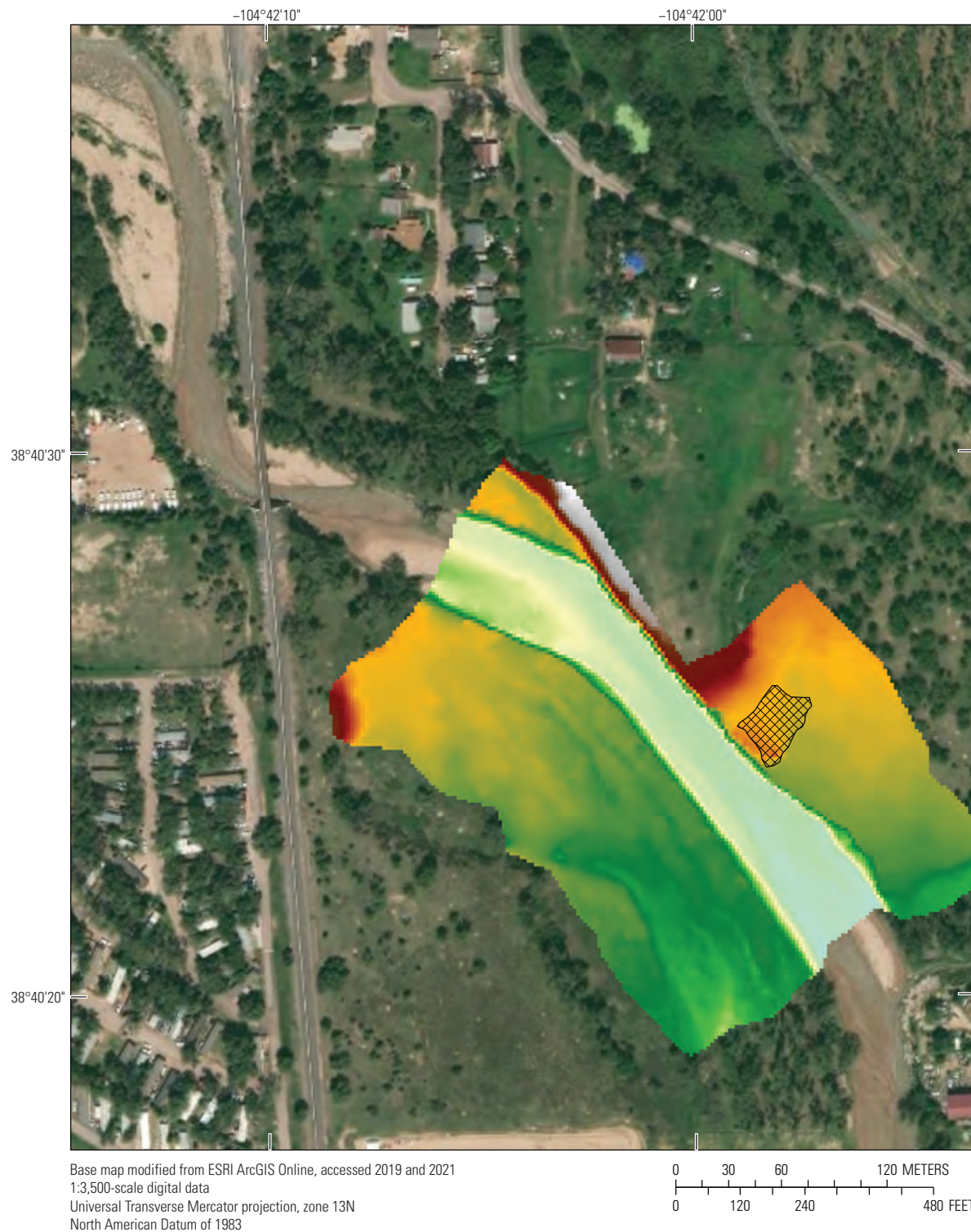
Digital files available at <https://doi.org/10.3133/sim3481> and
<https://doi.org/10.5066/P98J7DRO>

Suggested citation: Hempel, L.A., Creighton, A.L.,
and Bock, A.R., 2021, Elevation (2015, 2020) and
elevation-change (2015–20) map—Study area 01,
sheet 1 *in* Elevation and elevation-change maps of
Fountain Creek, southeastern Colorado, 2015–20:
U.S. Geological Survey Scientific Investigations
Map 3481, 10 sheets, 12-p. pamphlet,
<https://doi.org/10.3133/sim3481>.

Associated data for this publication: Hempel, L.A.,
Creighton, A.L., and Kisfalusi, Z.D., 2020, Elevation
data from Fountain Creek between Colorado
Springs and the confluence of Fountain Creek at the
Arkansas River, Colorado, 2020 (ver 2.0, May 2021):
U.S. Geological Survey data release,
<https://doi.org/10.5066/P98J7DRO>.

Elevation (2015, 2020) and Elevation-Change (2015–20) Map—Study Area 01

By
Laura A. Hempel, Andrea L. Creighton, and Andrew R. Bock
2021

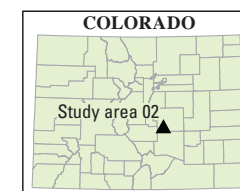
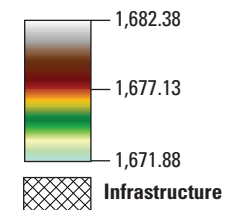


INTERACTIVE DATA LAYERS

Elevation map 2015 (Hempel and
others, 2020b)
Elevation map 2020
Elevation-change map with
95% confidence limit

EXPLANATION

Elevation, in meters—Datum is North American
Vertical Datum of 1988, Geoid 2012B



Publishing support provided by the
Science Publishing Network,
Denver Publishing Service Center
Manuscript approved for
publication September 17, 2021

Any use of trade, product, or firm names in this publication is for
descriptive purposes only and does not imply endorsement by the
U.S. Government

This map or plate is offered as an online-only, digital publication.
Users should be aware that, because of differences in rendering
processes and pixel resolution, some slight distortion of scale may
occur when viewing it on a computer screen or when printing it on an
electronic plotter, even when it is viewed or printed at its intended
publication scale

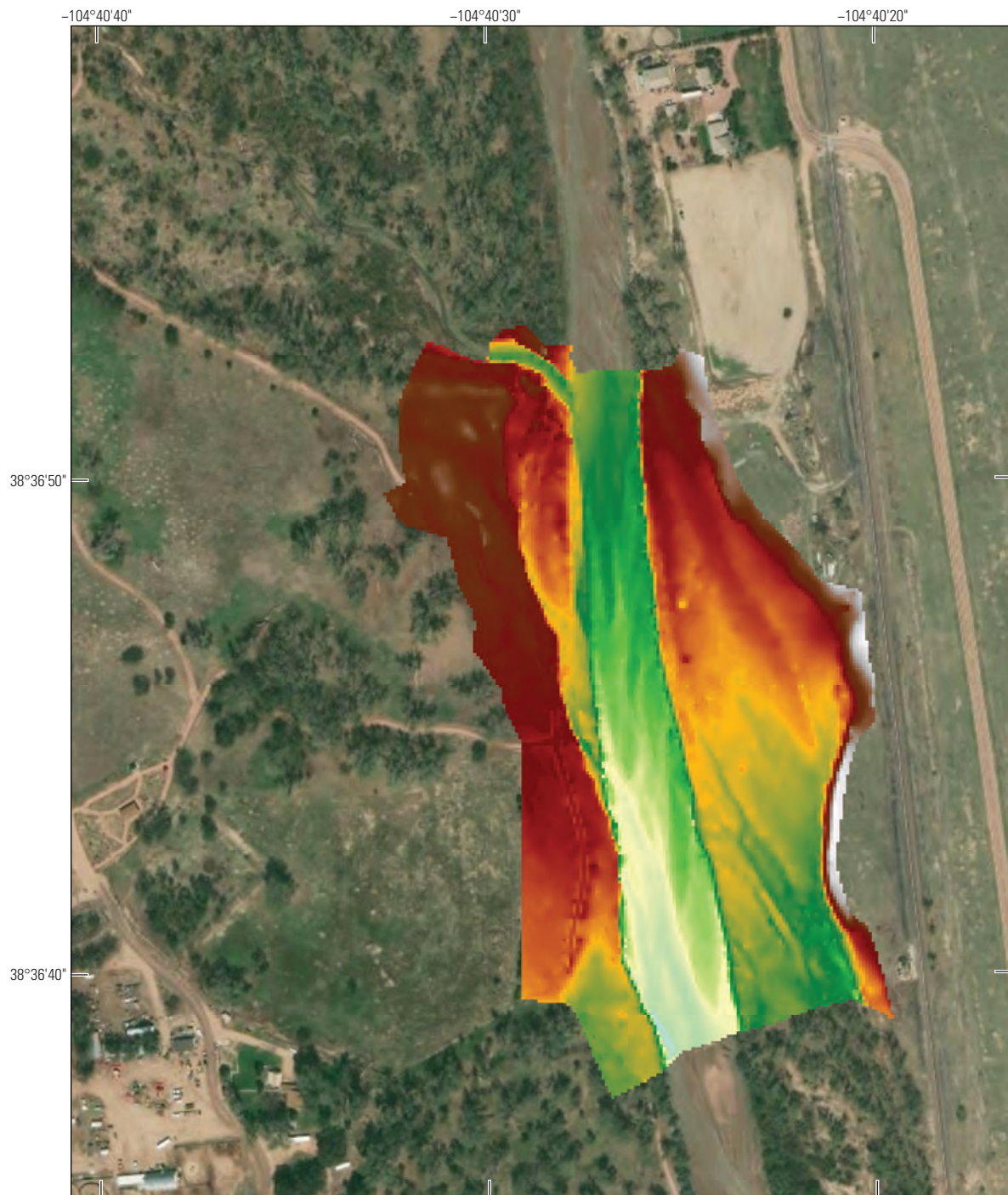
Digital files available at <https://doi.org/10.3133/sim3481> and
<https://doi.org/10.5066/P98J7DR0>

Suggested citation: Hempel, L.A., Creighton, A.L.,
and Bock, A.R., 2021, Elevation (2015, 2020) and
elevation-change (2015–20) map—Study area 02,
sheet 2 in Elevation and elevation-change maps of
Fountain Creek, southeastern Colorado, 2015–20:
U.S. Geological Survey Scientific Investigations
Map 3481, 10 sheets, 12-p. pamphlet,
<https://doi.org/10.3133/sim3481>.

Associated data for this publication: Hempel, L.A.,
Creighton, A.L., and Kisfalusi, Z.D., 2020, Elevation
data from Fountain Creek between Colorado
Springs and the confluence of Fountain Creek at the
Arkansas River, Colorado, 2020 (ver 2.0, May 2021):
U.S. Geological Survey data release,
<https://doi.org/10.5066/P98J7DR0>.

Elevation (2015, 2020) and Elevation-Change (2015–20) Map—Study Area 02

By
Laura A. Hempel, Andrea L. Creighton, and Andrew R. Bock
2021



Base map modified from ESRI ArcGIS Online, accessed 2019 and 2021
1:4,000-scale digital data
Universal Transverse Mercator projection, zone 13N
North American Datum of 1983

0 37.5 75 150 METERS
0 140 280 560 FEET

INTERACTIVE DATA LAYERS

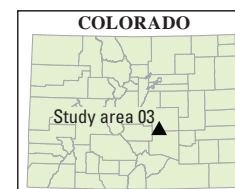
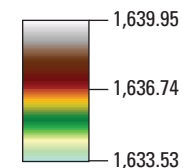
Elevation map 2015 (Hempel and
others, 2020b)

Elevation map 2020

Elevation-change map with
95% confidence limit

EXPLANATION

Elevation, in meters—Datum is North American
Vertical Datum of 1988, Geoid 2012B



Publishing support provided by the
Science Publishing Network,
Denver Publishing Service Center
Manuscript approved for
publication September 17, 2021

Any use of trade, product, or firm names in this publication is for
descriptive purposes only and does not imply endorsement by the
U.S. Government

This map or plate is offered as an online-only, digital publication.
Users should be aware that, because of differences in rendering
processes and pixel resolution, some slight distortion of scale may
occur when viewing it on a computer screen or when printing it on an
electronic plotter, even when it is viewed or printed at its intended
publication scale

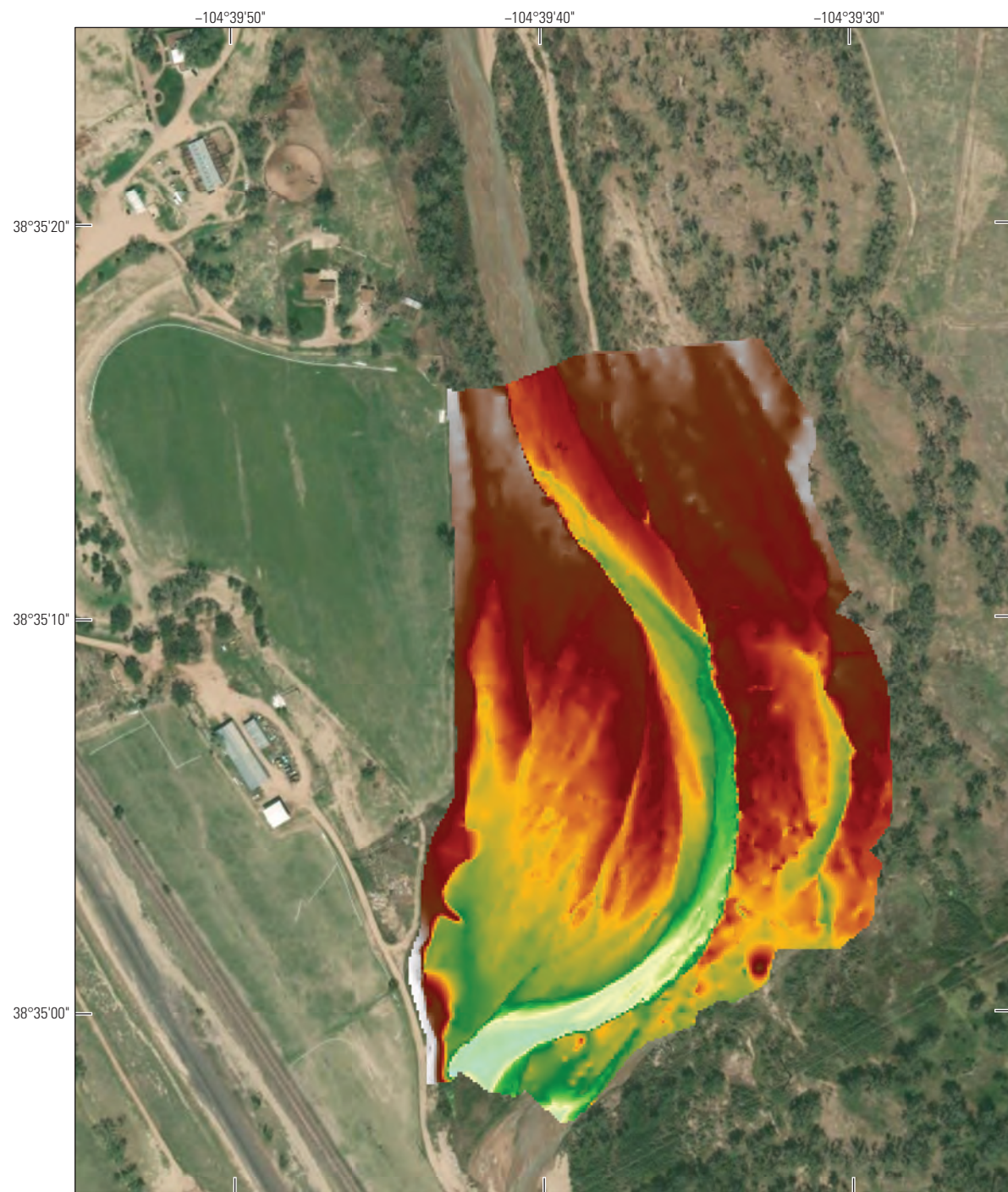
Digital files available at <https://doi.org/10.3133/sim3481> and
<https://doi.org/10.5066/P98J7DRO>

Suggested citation: Hempel, L.A., Creighton, A.L.,
and Bock, A.R., 2021, Elevation (2015, 2020) and
elevation-change (2015–20) map—Study area 03,
sheet 3 in Elevation and elevation-change maps of
Fountain Creek, southeastern Colorado, 2015–20:
U.S. Geological Survey Scientific Investigations
Map 3481, 10 sheets, 12-p. pamphlet,
<https://doi.org/10.3133/sim3481>.

Associated data for this publication: Hempel, L.A.,
Creighton, A.L., and Kisfalusi, Z.D., 2020, Elevation
data from Fountain Creek between Colorado
Springs and the confluence of Fountain Creek at the
Arkansas River, Colorado, 2020 (ver 2.0, May 2021):
U.S. Geological Survey data release,
<https://doi.org/10.5066/P98J7DRO>.

Elevation (2015, 2020) and Elevation-Change (2015–20) Map—Study Area 03

By
Laura A. Hempel, Andrea L. Creighton, and Andrew R. Bock
2021



Base map modified from ESRI ArcGIS Online, accessed 2019 and 2021
1:5,000-scale digital data
Universal Transverse Mercator projection, zone 13N
North American Datum of 1983

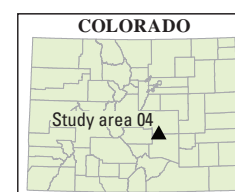
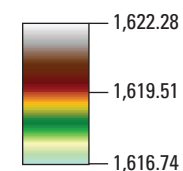
0 45 90 180 METERS
0 175 350 700 FEET

INTERACTIVE DATA LAYERS

Elevation map 2015 (Hempel and others, 2020b)
Elevation map 2020
Elevation-change map with 95% confidence limit

EXPLANATION

Elevation, in meters—Datum is North American Vertical Datum of 1988, Geoid 2012B



Publishing support provided by the
Science Publishing Network,
Denver Publishing Service Center
Manuscript approved for
publication September, 17, 2021

Any use of trade, product, or firm names in this publication is for descriptive purposes only and does not imply endorsement by the U.S. Government

This map or plate is offered as an online-only, digital publication. Users should be aware that, because of differences in rendering processes and pixel resolution, some slight distortion of scale may occur when viewing it on a computer screen or when printing it on an electronic plotter, even when it is viewed or printed at its intended publication scale

Digital files available at <https://doi.org/10.3133/sim3481> and <https://doi.org/10.5066/P98J7DRO>

Suggested citation: Hempel, L.A., Creighton, A.L., and Bock, A.R., 2021, Elevation (2015, 2020) and elevation-change (2015–20) map—Study area 04, sheet 4 in Elevation and elevation-change maps of Fountain Creek, southeastern Colorado, 2015–20: U.S. Geological Survey Scientific Investigations Map 3481, 10 sheets, 12-p. pamphlet, <https://doi.org/10.3133/sim3481>.

Associated data for this publication: Hempel, L.A., Creighton, A.L., and Kisfalusi, Z.D., 2020, Elevation data from Fountain Creek between Colorado Springs and the confluence of Fountain Creek at the Arkansas River, Colorado, 2020 (ver 2.0, May 2021): U.S. Geological Survey data release, <https://doi.org/10.5066/P98J7DRO>.

Elevation (2015, 2020) and Elevation-Change (2015–20) Map—Study Area 04

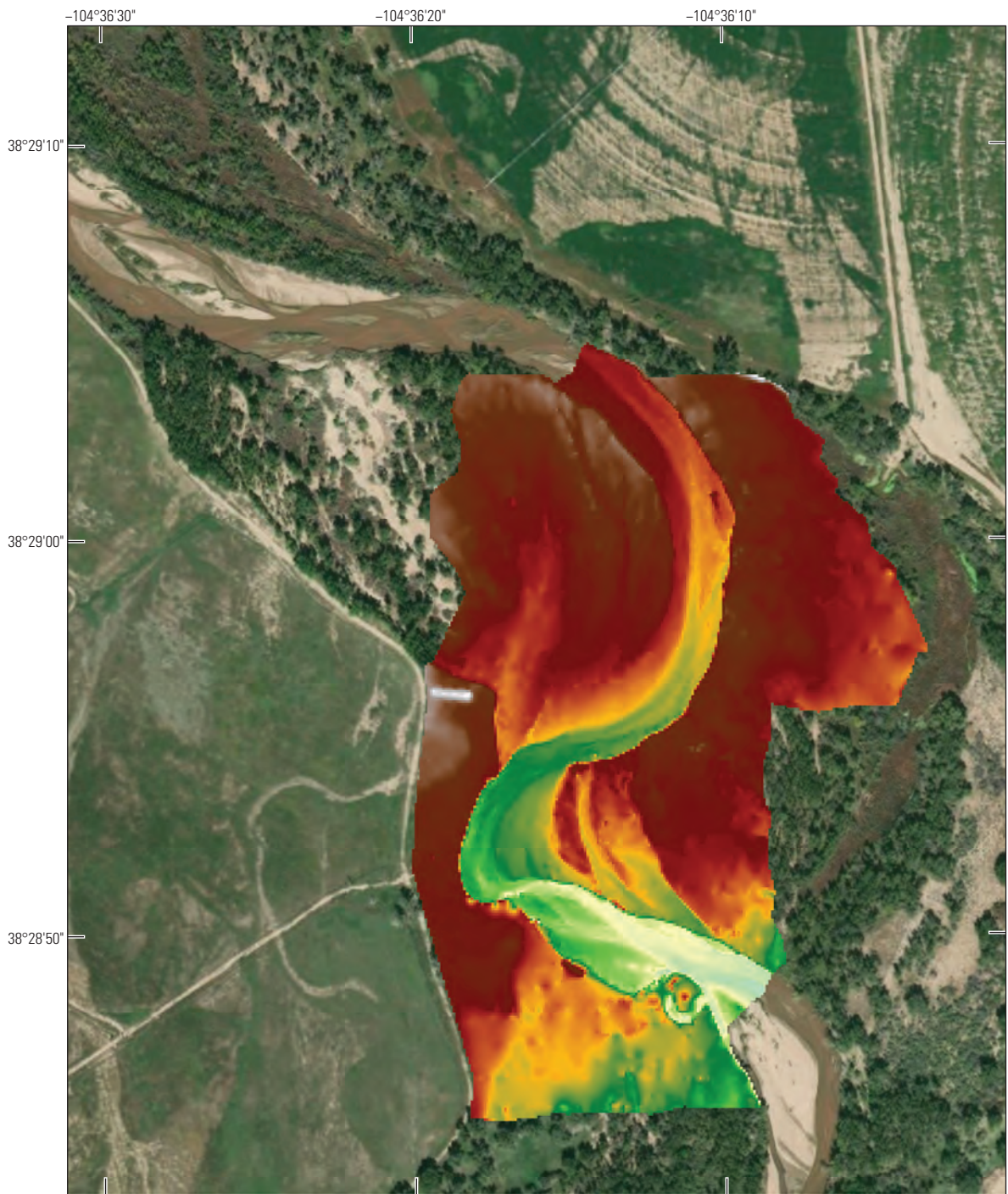
By
Laura A. Hempel, Andrea L. Creighton, and Andrew R. Bock
2021



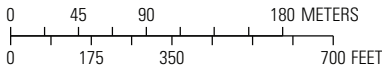
U.S. Department of the Interior
U.S. Geological Survey

Prepared in cooperation with
Colorado Springs Utilities

Scientific Investigations Map 3481
Sheet 5 of 10
Pamphlet accompanies map



Base map modified from ESRI ArcGIS Online, accessed 2019 and 2021
1:5,000-scale digital data
Universal Transverse Mercator projection, zone 13N
North American Datum of 1983

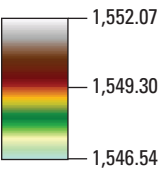


INTERACTIVE DATA LAYERS

Elevation map 2015 (Hempel and
others, 2020b)
Elevation map 2020
Elevation-change map with
95% confidence limit

EXPLANATION

Elevation, in meters—Datum is North American
Vertical Datum of 1988, Geoid 2012B



Publishing support provided by the
Science Publishing Network,
Denver Publishing Service Center
Manuscript approved for
publication September 17, 2021

Any use of trade, product, or firm names in this publication is for
descriptive purposes only and does not imply endorsement by the
U.S. Government

This map or plate is offered as an online-only, digital publication.
Users should be aware that, because of differences in rendering
processes and pixel resolution, some slight distortion of scale may
occur when viewing it on a computer screen or when printing it on an
electronic plotter, even when it is viewed or printed at its intended
publication scale

Digital files available at <https://doi.org/10.3133/sim3481> and
<https://doi.org/10.5066/P98J7DR0>

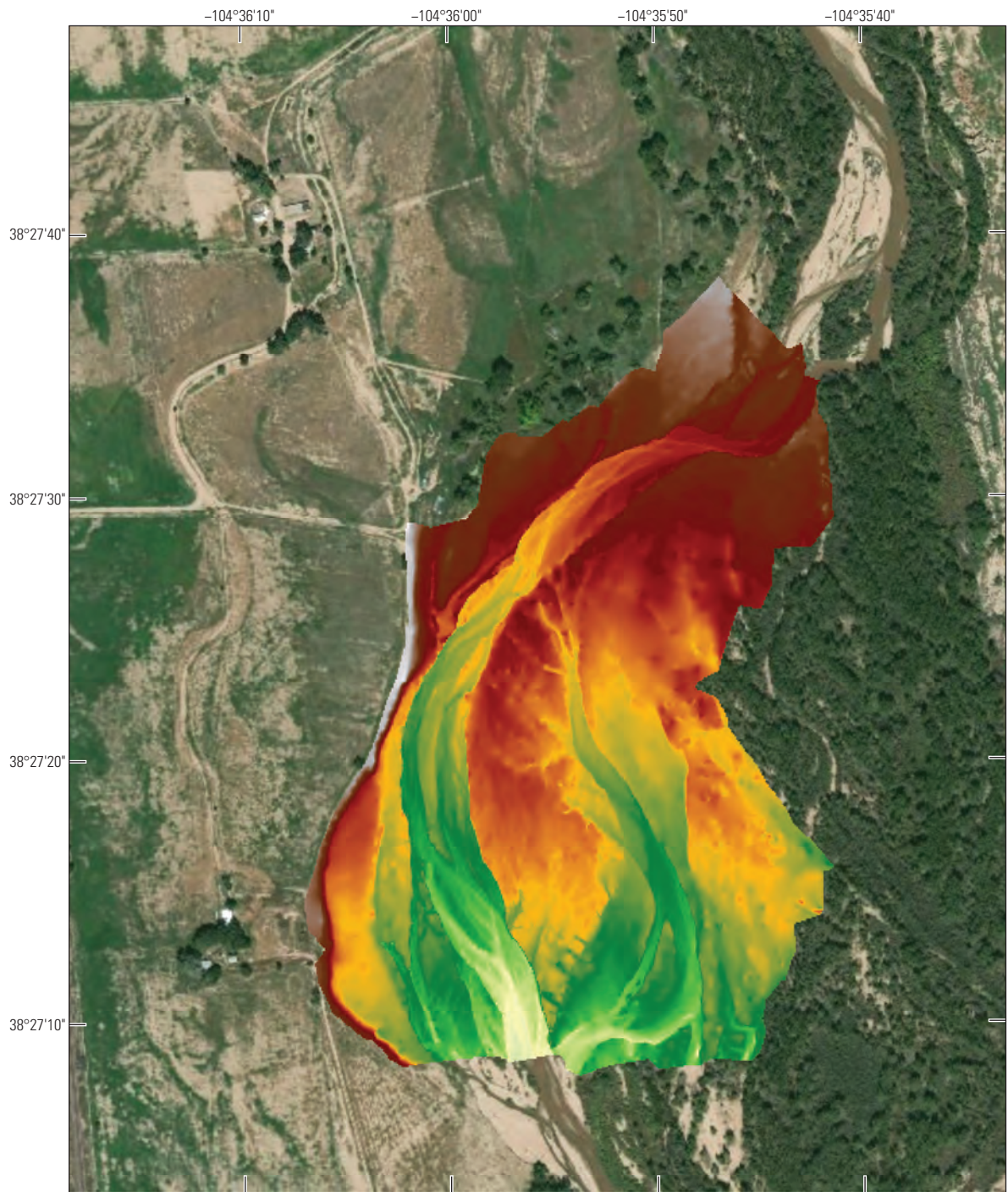
Suggested citation: Hempel, L.A., Creighton, A.L.,
and Bock, A.R., 2021, Elevation (2015, 2020) and
elevation-change (2015–20) map—Study area 05,
sheet 5 *in* Elevation and elevation-change maps of
Fountain Creek, southeastern Colorado, 2015–20:
U.S. Geological Survey Scientific Investigations
Map 3481, 10 sheets, 12-p. pamphlet,
<https://doi.org/10.3133/sim3481>.

Associated data for this publication: Hempel, L.A.,
Creighton, A.L., and Kisfalusi, Z.D., 2020, Elevation
data from Fountain Creek between Colorado
Springs and the confluence of Fountain Creek at the
Arkansas River, Colorado, 2020 (ver 2.0, May 2021):
U.S. Geological Survey data release,
<https://doi.org/10.5066/P98J7DR0>.

Elevation (2015, 2020) and Elevation-Change (2015–20) Map—Study Area 05

By
Laura A. Hempel, Andrea L. Creighton, and Andrew R. Bock
2021

ISSN 2329-132X (online)
<https://doi.org/10.3133/sim3481>



Base map modified from ESRI ArcGIS Online, accessed 2019 and 2021
1:7,500-scale digital data
Universal Transverse Mercator projection, zone 13N
North American Datum of 1983

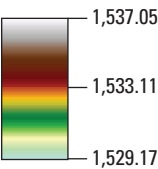
0 70 140 280 METERS
0 260 520 1,040 FEET

**INTERACTIVE
DATA LAYERS**

Elevation map 2015 (Hempel and
others, 2020b)
Elevation map 2020
Elevation-change map with
95% confidence limit

EXPLANATION

Elevation, in meters—Datum is North American
Vertical Datum of 1988, Geoid 2012B



Publishing support provided by the
Science Publishing Network,
Denver Publishing Service Center
Manuscript approved for
publication September 17, 2021

Any use of trade, product, or firm names in this publication is for
descriptive purposes only and does not imply endorsement by the
U.S. Government

This map or plate is offered as an online-only, digital publication.
Users should be aware that, because of differences in rendering
processes and pixel resolution, some slight distortion of scale may
occur when viewing it on a computer screen or when printing it on an
electronic plotter, even when it is viewed or printed at its intended
publication scale

Digital files available at <https://doi.org/10.3133/sim3481> and
<https://doi.org/10.5066/P98J7DR0>

Suggested citation: Hempel, L.A., Creighton, A.L.,
and Bock, A.R., 2021, Elevation (2015, 2020) and
elevation-change (2015–20) map—Study area 06,
sheet 6 in Elevation and elevation-change maps of
Fountain Creek, southeastern Colorado, 2015–20:
U.S. Geological Survey Scientific Investigations
Map 3481, 10 sheets, 12-p. pamphlet,
<https://doi.org/10.3133/sim3481>.

Associated data for this publication: Hempel, L.A.,
Creighton, A.L., and Kisfalusi, Z.D., 2020, Elevation
data from Fountain Creek between Colorado
Springs and the confluence of Fountain Creek at the
Arkansas River, Colorado, 2020 (ver 2.0, May 2021):
U.S. Geological Survey data release,
<https://doi.org/10.5066/P98J7DR0>.

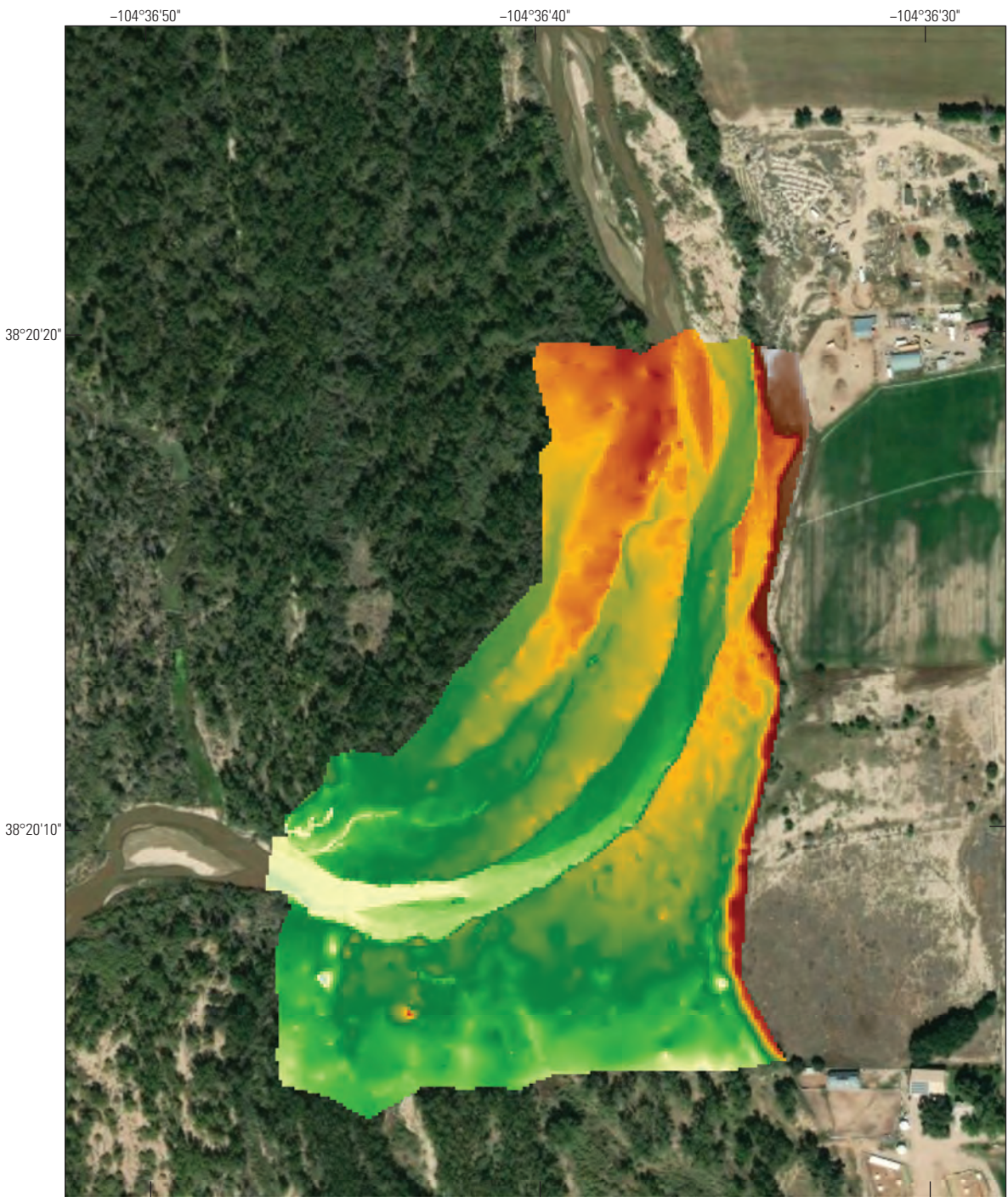
**Elevation (2015, 2020) and
Elevation-Change (2015–20) Map—Study Area 06**
By
Laura A. Hempel, Andrea L. Creighton, and Andrew R. Bock
2021



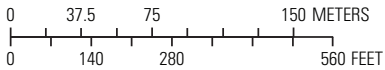
U.S. Department of the Interior
U.S. Geological Survey

Prepared in cooperation with
Colorado Springs Utilities

Scientific Investigations Map 3481
Sheet 7 of 10
Pamphlet accompanies map



Base map modified from ESRI ArcGIS Online, accessed 2019 and 2021
1:4,000-scale digital data
Universal Transverse Mercator projection, zone 13N
North American Datum of 1983

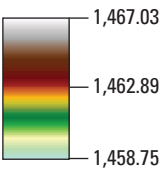


INTERACTIVE DATA LAYERS

Elevation map 2015 (Hempel and
others, 2020b)
Elevation map 2020
Elevation-change map with
95% confidence limit

EXPLANATION

Elevation, in meters—Datum is North American
Vertical Datum of 1988, Geoid 2012B



Publishing support provided by the
Science Publishing Network,
Denver Publishing Service Center
Manuscript approved for
publication September 17, 2021

Any use of trade, product, or firm names in this publication is for
descriptive purposes only and does not imply endorsement by the
U.S. Government

This map or plate is offered as an online-only, digital publication.
Users should be aware that, because of differences in rendering
processes and pixel resolution, some slight distortion of scale may
occur when viewing it on a computer screen or when printing it on an
electronic plotter, even when it is viewed or printed at its intended
publication scale

Digital files available at <https://doi.org/10.3133/sim3481> and
<https://doi.org/10.5066/P98J7DRO>

Suggested citation: Hempel, L.A., Creighton, A.L.,
and Bock, A.R., 2021, Elevation (2015, 2020) and
elevation-change (2015–20) map—Study area 07,
sheet 7 in Elevation and elevation-change maps of
Fountain Creek, southeastern Colorado, 2015–20:
U.S. Geological Survey Scientific Investigations
Map 3481, 10 sheets, 12-p. pamphlet,
<https://doi.org/10.3133/sim3481>.

Associated data for this publication: Hempel, L.A.,
Creighton, A.L., and Kisfalusi, Z.D., 2020, Elevation
data from Fountain Creek between Colorado
Springs and the confluence of Fountain Creek at the
Arkansas River, Colorado, 2020 (ver 2.0, May 2021):
U.S. Geological Survey data release,
<https://doi.org/10.5066/P98J7DRO>.

Elevation (2015, 2020) and Elevation-Change (2015–20) Map—Study Area 07

By
Laura A. Hempel, Andrea L. Creighton, and Andrew R. Bock
2021

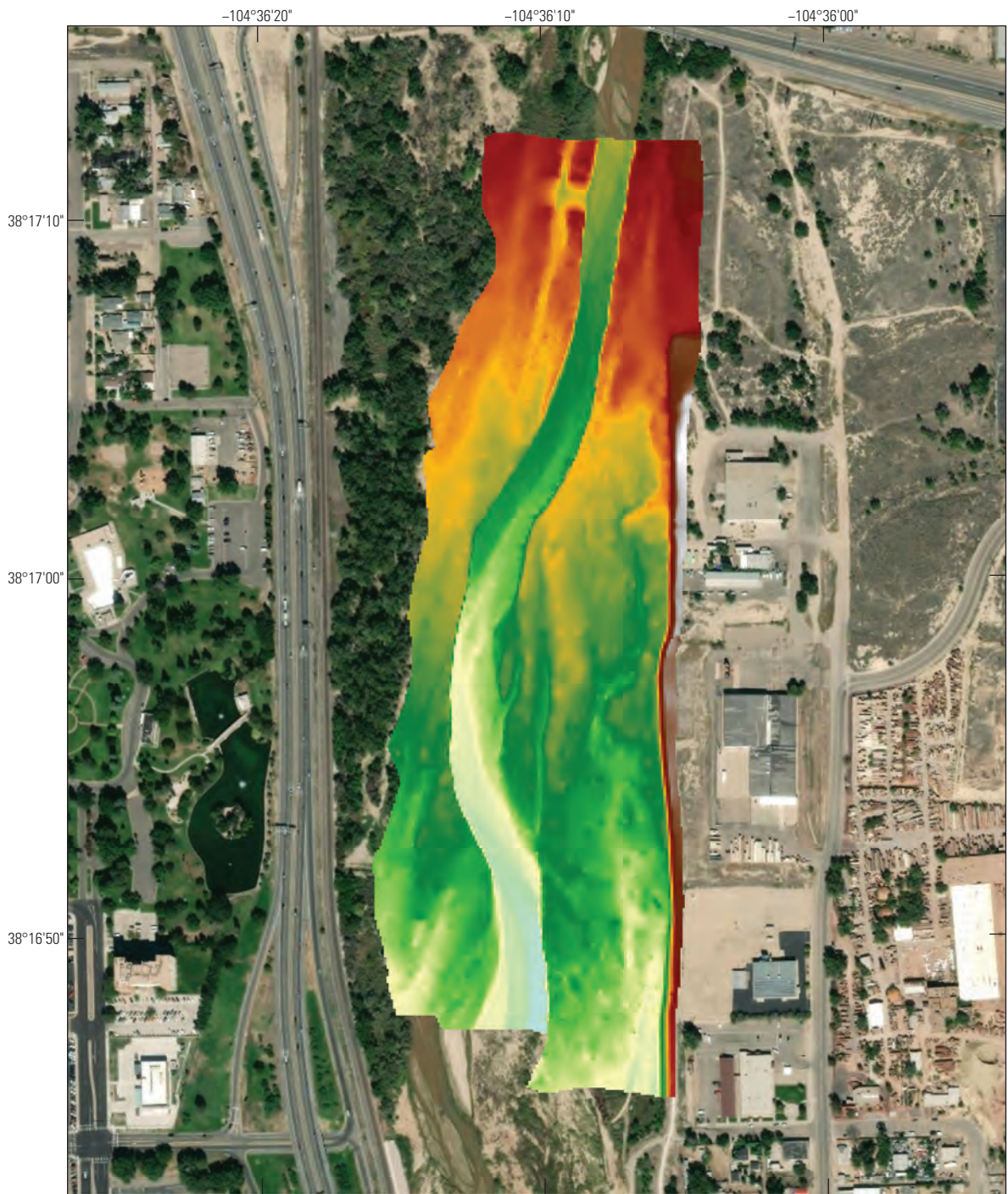
ISSN 2329-132X (online)
<https://doi.org/10.3133/sim3481>



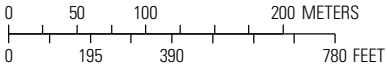
U.S. Department of the Interior
U.S. Geological Survey

Prepared in cooperation with
Colorado Springs Utilities

Scientific Investigations Map 3481
Sheet 8 of 10
Pamphlet accompanies map



Base map modified from ESRI ArcGIS Online, accessed 2019 and 2021
1:5,500-scale digital data
Universal Transverse Mercator projection, zone 13N
North American Datum of 1983

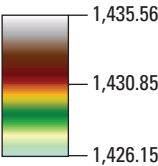


INTERACTIVE DATA LAYERS

- Elevation map 2015 (Hempel and others, 2020b)
- Elevation map 2020
- Elevation-change map with 95% confidence limit

EXPLANATION

Elevation, in meters—Datum is North American Vertical Datum of 1988, Geoid 2012B



Publishing support provided by the
Science Publishing Network,
Denver Publishing Service Center
Manuscript approved for
publication September 17, 2021

Any use of trade, product, or firm names in this publication is for
descriptive purposes only and does not imply endorsement by the
U.S. Government

This map or plate is offered as an online-only, digital publication.
Users should be aware that, because of differences in rendering
processes and pixel resolution, some slight distortion of scale may
occur when viewing it on a computer screen or when printing it on an
electronic plotter, even when it is viewed or printed at its intended
publication scale

Digital files available at <https://doi.org/10.3133/sim3481> and
<https://doi.org/10.5066/P98J7DRO>

Suggested citation: Hempel, L.A., Creighton, A.L.,
and Bock, A.R., 2021, Elevation (2015, 2020) and
elevation-change (2015–20) map—Study area 08,
sheet 8 *in* Elevation and elevation-change maps of
Fountain Creek, southeastern Colorado, 2015–20:
U.S. Geological Survey Scientific Investigations
Map 3481, 10 sheets, 12-p. pamphlet,
<https://doi.org/10.3133/sim3481>.

Associated data for this publication: Hempel, L.A.,
Creighton, A.L., and Kisfalusi, Z.D., 2020, Elevation
data from Fountain Creek between Colorado
Springs and the confluence of Fountain Creek at the
Arkansas River, Colorado, 2020 (ver 2.0, May 2021):
U.S. Geological Survey data release,
<https://doi.org/10.5066/P98J7DRO>.

Elevation (2015, 2020) and Elevation-Change (2015–20) Map—Study Area 08

By
Laura A. Hempel, Andrea L. Creighton, and Andrew R. Bock
2021

ISSN 2329-132X (online)
<https://doi.org/10.3133/sim3481>



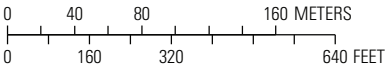
U.S. Department of the Interior
U.S. Geological Survey

Prepared in cooperation with
Colorado Springs Utilities

Scientific Investigations Map 3481
Sheet 9 of 10
Pamphlet accompanies map



Base map modified from ESRI ArcGIS Online, accessed 2019 and 2021
1:4,500-scale digital data
Universal Transverse Mercator projection, zone 13N
North American Datum of 1983

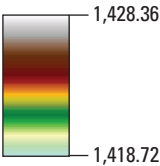


INTERACTIVE DATA LAYERS

Elevation map 2015 (Hempel and
others, 2020b)
Elevation map 2020
Elevation-change map with
95% confidence limit

EXPLANATION

Elevation, in meters—Datum is North American
Vertical Datum of 1988, Geoid 2012B



Publishing support provided by the
Science Publishing Network,
Denver Publishing Service Center
Manuscript approved for
publication September 17, 2021

Any use of trade, product, or firm names in this publication is for
descriptive purposes only and does not imply endorsement by the
U.S. Government

This map or plate is offered as an online-only, digital publication.
Users should be aware that, because of differences in rendering
processes and pixel resolution, some slight distortion of scale may
occur when viewing it on a computer screen or when printing it on an
electronic plotter, even when it is viewed or printed at its intended
publication scale

Digital files available at <https://doi.org/10.3133/sim3481> and
<https://doi.org/10.5066/P98J7DRO>

Suggested citation: Hempel, L.A., Creighton, A.L.,
and Bock, A.R., 2021, Elevation (2015, 2020) and
elevation-change (2015–20) map—Study area 09,
sheet 9 in Elevation and elevation-change maps of
Fountain Creek, southeastern Colorado, 2015–20:
U.S. Geological Survey Scientific Investigations
Map 3481, 10 sheets, 12-p. pamphlet,
<https://doi.org/10.3133/sim3481>.

Associated data for this publication: Hempel, L.A.,
Creighton, A.L., and Kisfalusi, Z.D., 2020, Elevation
data from Fountain Creek between Colorado
Springs and the confluence of Fountain Creek at the
Arkansas River, Colorado, 2020 (ver 2.0, May 2021):
U.S. Geological Survey data release,
<https://doi.org/10.5066/P98J7DRO>.

Elevation (2015, 2020) and Elevation-Change (2015–20) Map—Study Area 09

By
Laura A. Hempel, Andrea L. Creighton, and Andrew R. Bock
2021

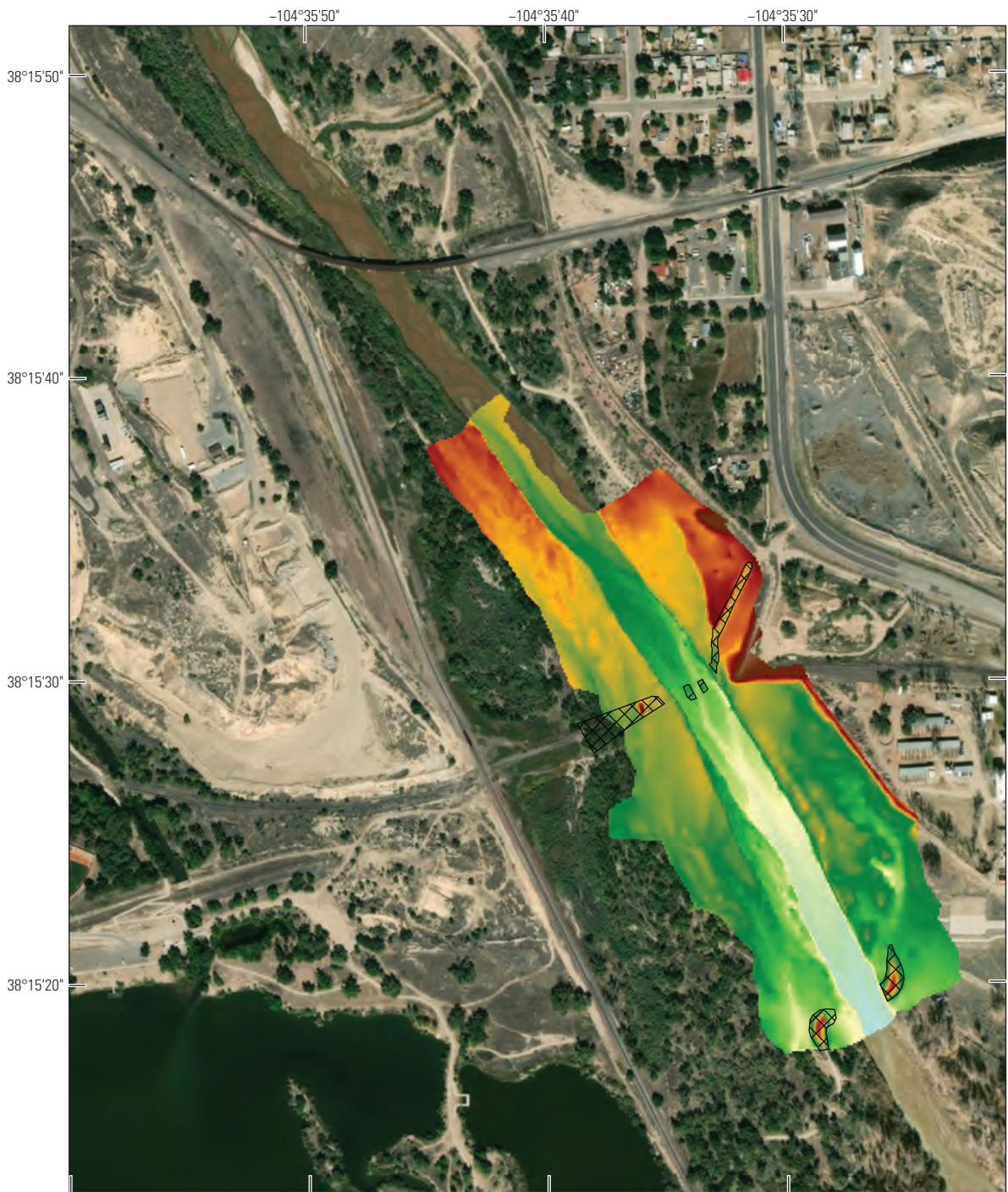
ISSN 2329-132X (online)
<https://doi.org/10.3133/sim3481>



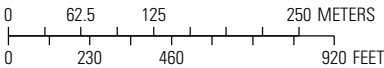
U.S. Department of the Interior
U.S. Geological Survey

Prepared in cooperation with
Colorado Springs Utilities

Scientific Investigations Map 3481
Sheet 10 of 10
Pamphlet accompanies map



Base map modified from ESRI ArcGIS Online, accessed 2019 and 2021
1:6,500-scale digital data
Universal Transverse Mercator projection, zone 13N
North American Datum of 1983

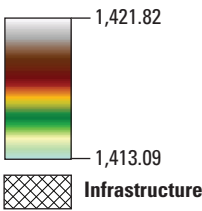


INTERACTIVE DATA LAYERS

Elevation map 2015 (Hempel and
others, 2020b)
Elevation map 2020
Elevation-change map with
95% confidence limit

EXPLANATION

Elevation, in meters—Datum is North American
Vertical Datum of 1988, Geoid 2012B



Publishing support provided by the
Science Publishing Network,
Denver Publishing Service Center
Manuscript approved for
publication September 17, 2021

Any use of trade, product, or firm names in this publication is for
descriptive purposes only and does not imply endorsement by the
U.S. Government

This map or plate is offered as an online-only, digital publication.
Users should be aware that, because of differences in rendering
processes and pixel resolution, some slight distortion of scale may
occur when viewing it on a computer screen or when printing it on an
electronic plotter, even when it is viewed or printed at its intended
publication scale

Digital files available at <https://doi.org/10.3133/sim3481> and
<https://doi.org/10.5066/P98J7DRO>

Suggested citation: Hempel, L.A., Creighton, A.L.,
and Bock, A.R., 2021, Elevation (2015, 2020) and
elevation-change (2015–20) map—Study area 10,
sheet 10 in Elevation and elevation-change maps of
Fountain Creek, southeastern Colorado, 2015–20:
U.S. Geological Survey Scientific Investigations
Map 3481, 10 sheets, 12-p. pamphlet,
<https://doi.org/10.3133/sim3481>.

Associated data for this publication: Hempel, L.A.,
Creighton, A.L., and Kisfalusi, Z.D., 2020, Elevation
data from Fountain Creek between Colorado
Springs and the confluence of Fountain Creek at the
Arkansas River, Colorado, 2020 (ver 2.0, May 2021):
U.S. Geological Survey data release,
<https://doi.org/10.5066/P98J7DRO>.

Elevation (2015, 2020) and Elevation-Change (2015–20) Map—Study Area 10

By
Laura A. Hempel, Andrea L. Creighton, and Andrew R. Bock
2021

ISSN 2329-132X (online)
<https://doi.org/10.3133/sim3481>