

Figure 44. Location of Maysville Reservoir near Maysville, Missouri.

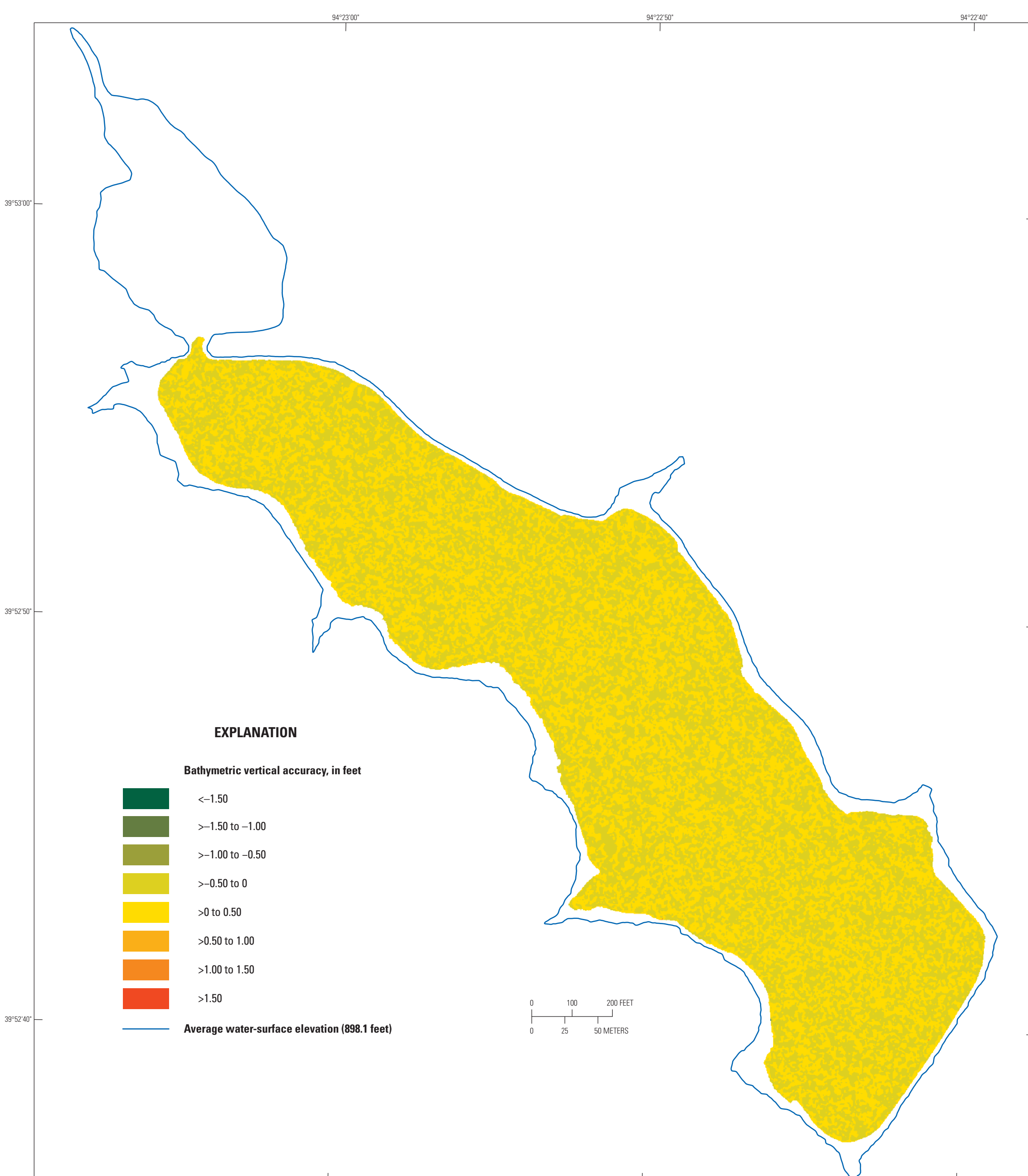


Figure 46. Vertical accuracy of the bathymetric surface of Maysville Reservoir near Maysville, Missouri, 2019.

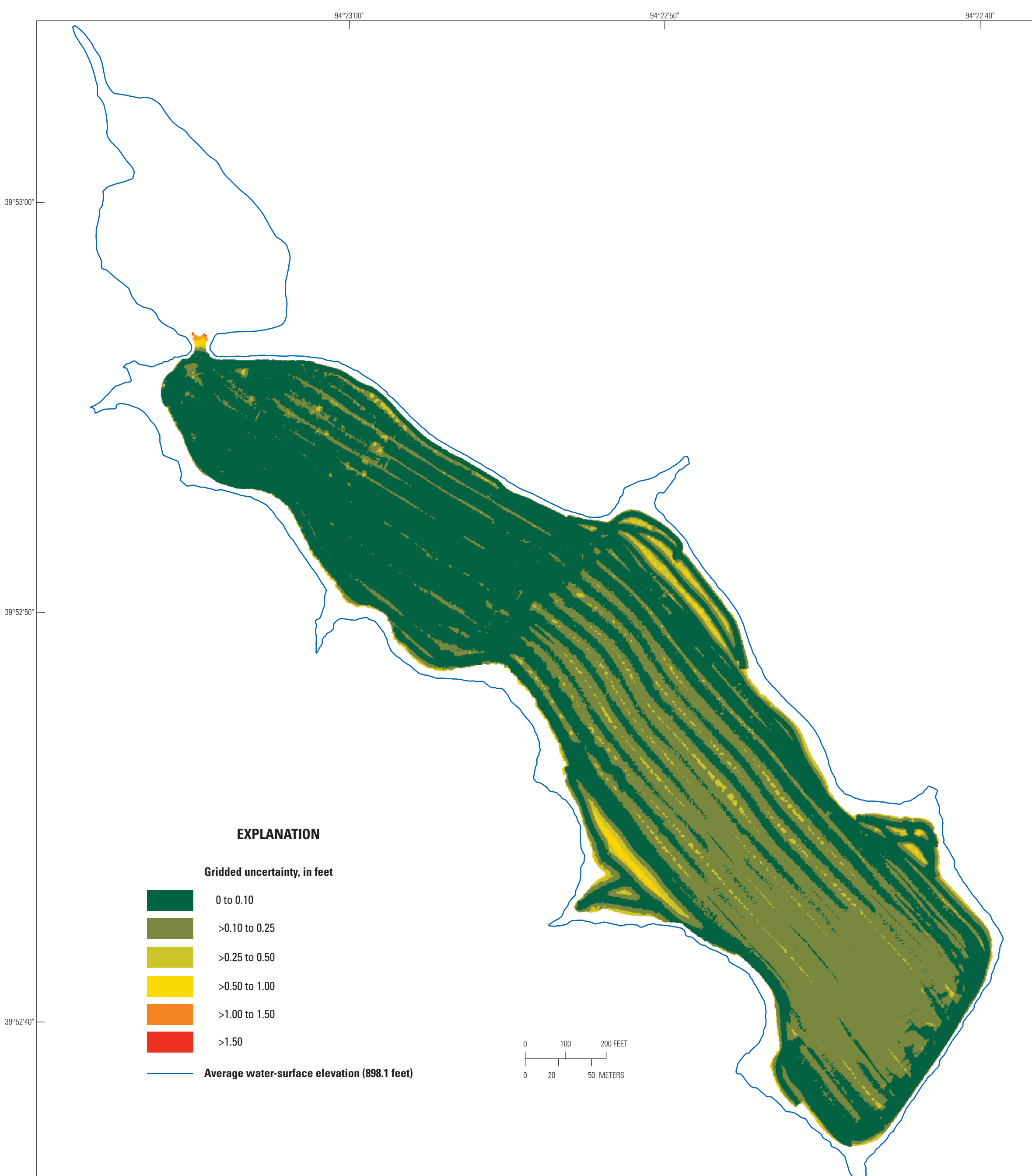


Figure 47. Gridded uncertainty of the bathymetric surface of Maysville Reservoir near Maysville, Missouri, 2019.



Figure 45. Bathymetric contours for Maysville Reservoir (lake 10; fig. 1; table 1) near Maysville, Missouri, resulting from a survey on September 7, 2019.

Table 14. Surface area and capacity at specified water-surface elevations for Maysville Reservoir near Maysville, Missouri, September 7, 2019.

[Spillway elevation is about 898.6 feet (fig. 45); the average water-surface elevation during the survey was about 898.1 feet (row shaded in the table)]

Water-surface elevation, ^a in feet	Surface area, in acres	Capacity ^b in acre-feet
888.0	0.20	0.00
890.0	6.40	5.90
892.0	16.8	30.5
894.0	28.3	74.6
896.0	31.3	134
898.0	35.5	201
898.1	35.8	204
898.6	37.8	223

^aElevations are referenced to the North American Vertical Datum of 1988 using the geoid model GEOID12b.

^bCapacities were calculated from surface testing at 0.09-foot vertical accuracy as a 95-percent confidence level. An explanation of the vertical accuracy calculation can be found in the "Bathymetric Surface, Contour Map, and Bathymetric Change Quality Assurance" section of the report of which this sheet is a part.

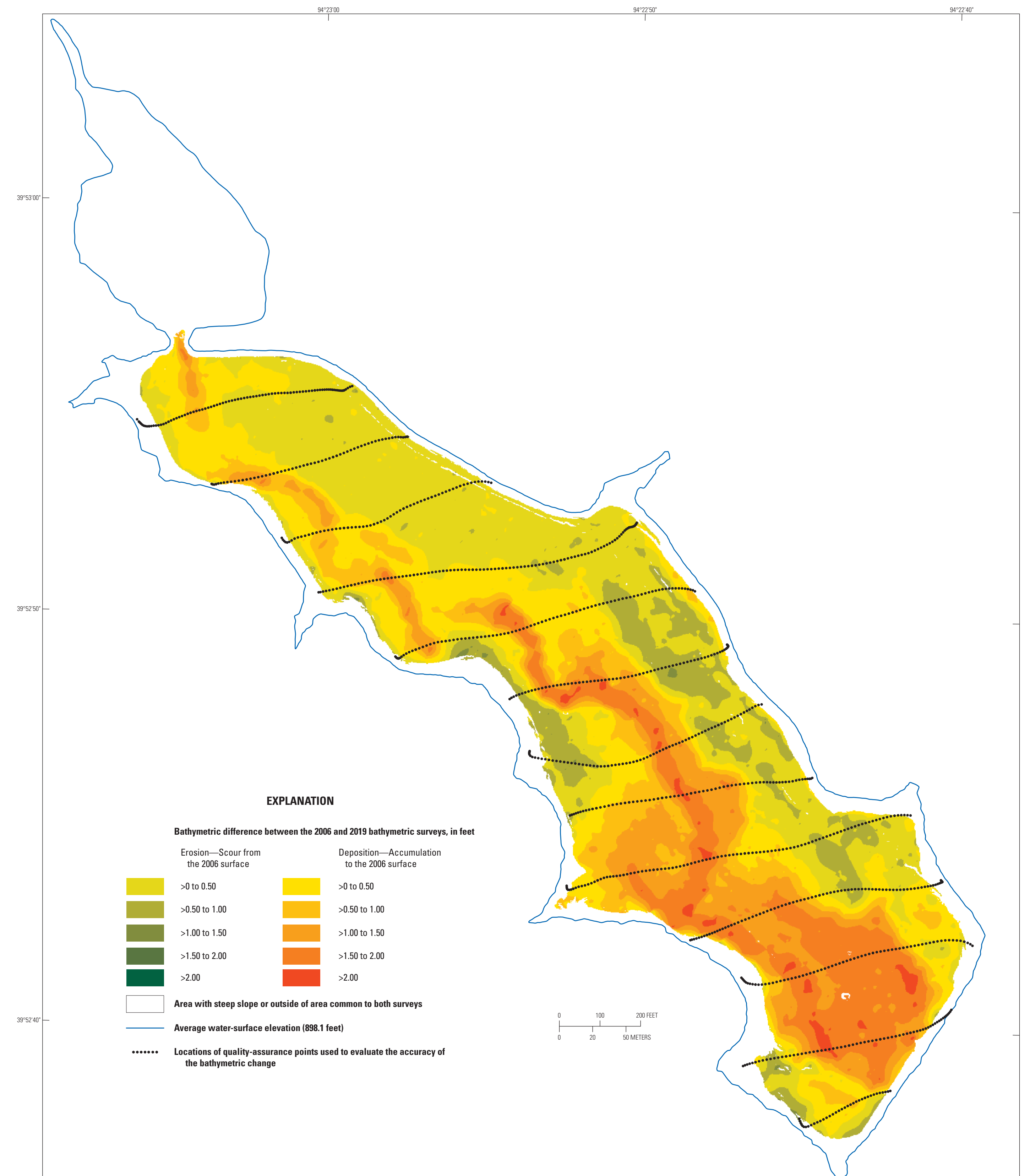


Figure 48. Bathymetric change between the 2006 survey and the 2019 survey of Maysville Reservoir near Maysville, Missouri.

Bathymetric Contour Map, Surface Area and Capacity Table, and Bathymetric Change Map for Maysville Reservoir near Maysville, Missouri, 2019

By
Richard J. Huizinga, Lindi D. Oyley, and Benjamin C. Rivers
2022