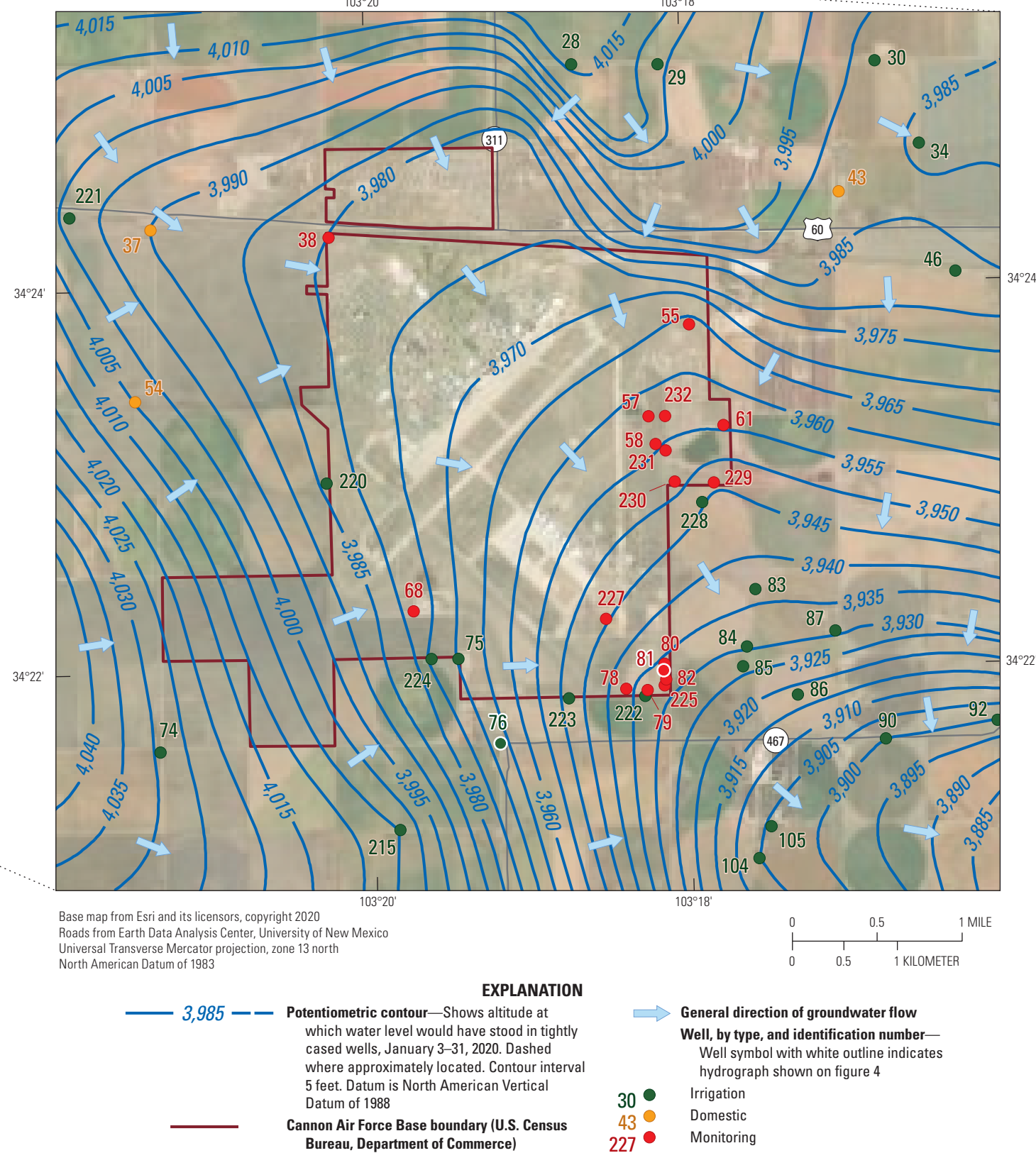
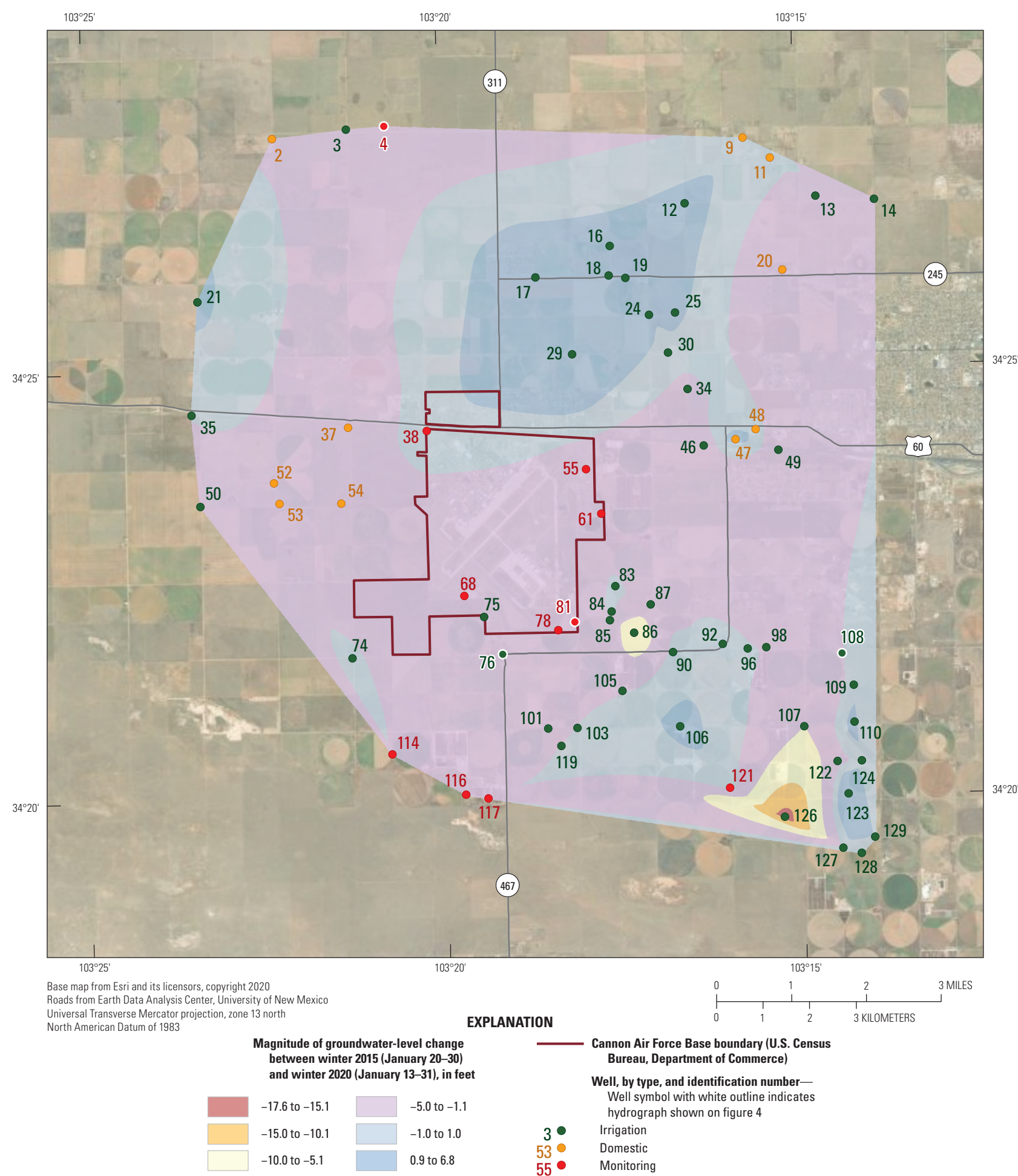


**Figure 6.** Potentiometric surface of winter groundwater conditions in the Cannon Air Force Base area, January 13-31, 2020, Curry County, New Mexico. Data shown in table 1.



**Figure 7.** Potentiometric surface of winter groundwater conditions on, and in close proximity to, Cannon Air Force Base, January 13-31, 2020, Curry County, New Mexico. Data shown in table 1.



**Figure 8.** Groundwater-level change between winter 2015 (January 20–30) and winter 2020 (January 13–31) in the Cannon Air Force Base area, Curry County, New Mexico. Data shown in table 1.



# Potentiometric Surface of Winter 2020 Groundwater Conditions and Groundwater-level Change Between Winter 2015 and Winter 2020 in the Cannon Air Force Base Area, Curry County, New Mexico

By  
**Blake A. Goodwin and Meghan T. Bell**  
2023

Any use of trade, product, or firm names in this publication is for descriptive purposes only and does not imply endorsement by the U.S. Government.

This map or plate is offered as an online-only, digital publication. Users should be aware that because of the differences in rendering processes and pixel resolution, some slight distortion of scale may occur when it is viewed or printed at its intended publication scale.

Digital files available at <https://doi.org/10.3133/sim3504> and <https://pubs.er.usgs.gov/publication/sim3504>

Suggested citation: Goodwin, B.A., and Bell, M.T., 2023, Potentiometric Surface Map of the Southern High Plains Aquifer in the Cannon Air Force Base Area, Curry County, New Mexico, 2020: U.S. Geological Survey Scientific Investigations Map 3504, 1 sheet, 18-p. pamphlet, <https://doi.org/10.3133/sim3504>

Associated data for this publication: U.S. Geological Survey, 2020, USGS water data for the Nation: U.S. Geological Survey National Water Information System database, <https://doi.org/10.5066/77P5KJN>