

Figure 2. Shaded-relief map showing map area and locations of Lake Berryessa, Berryessa Snow Mountain National Monument, and Cache Creek Wilderness. Also shown are major roads (red and gray lines), small lakes (white), and a scale bar.

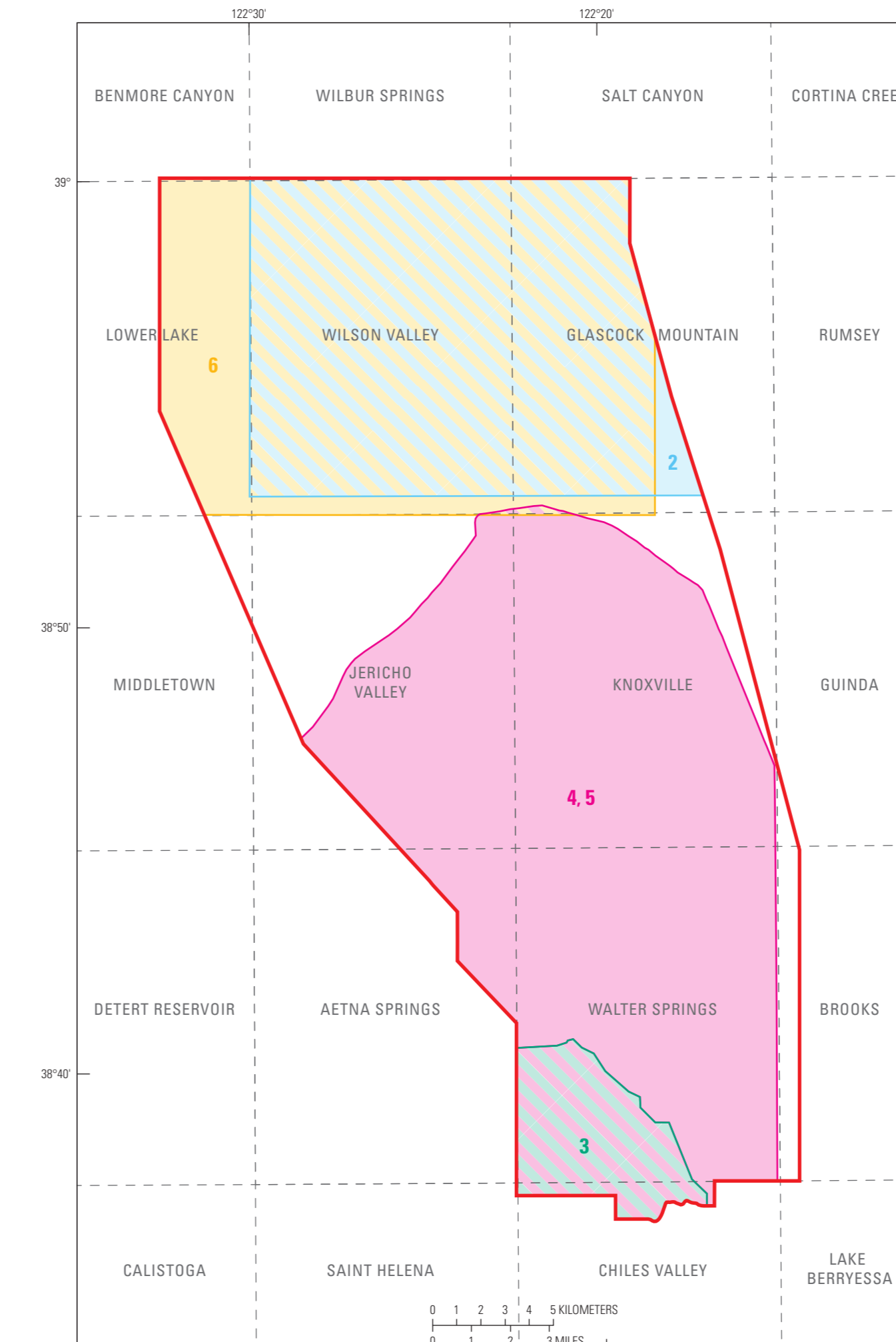


Figure 3. Map showing map area in relation to 75-minute U.S. Geological Survey topographic quadrangles and around map area. Also shown are sources of previously published geologic map data (S-45) not shown in new mapping from this report (white areas inside thick red line).

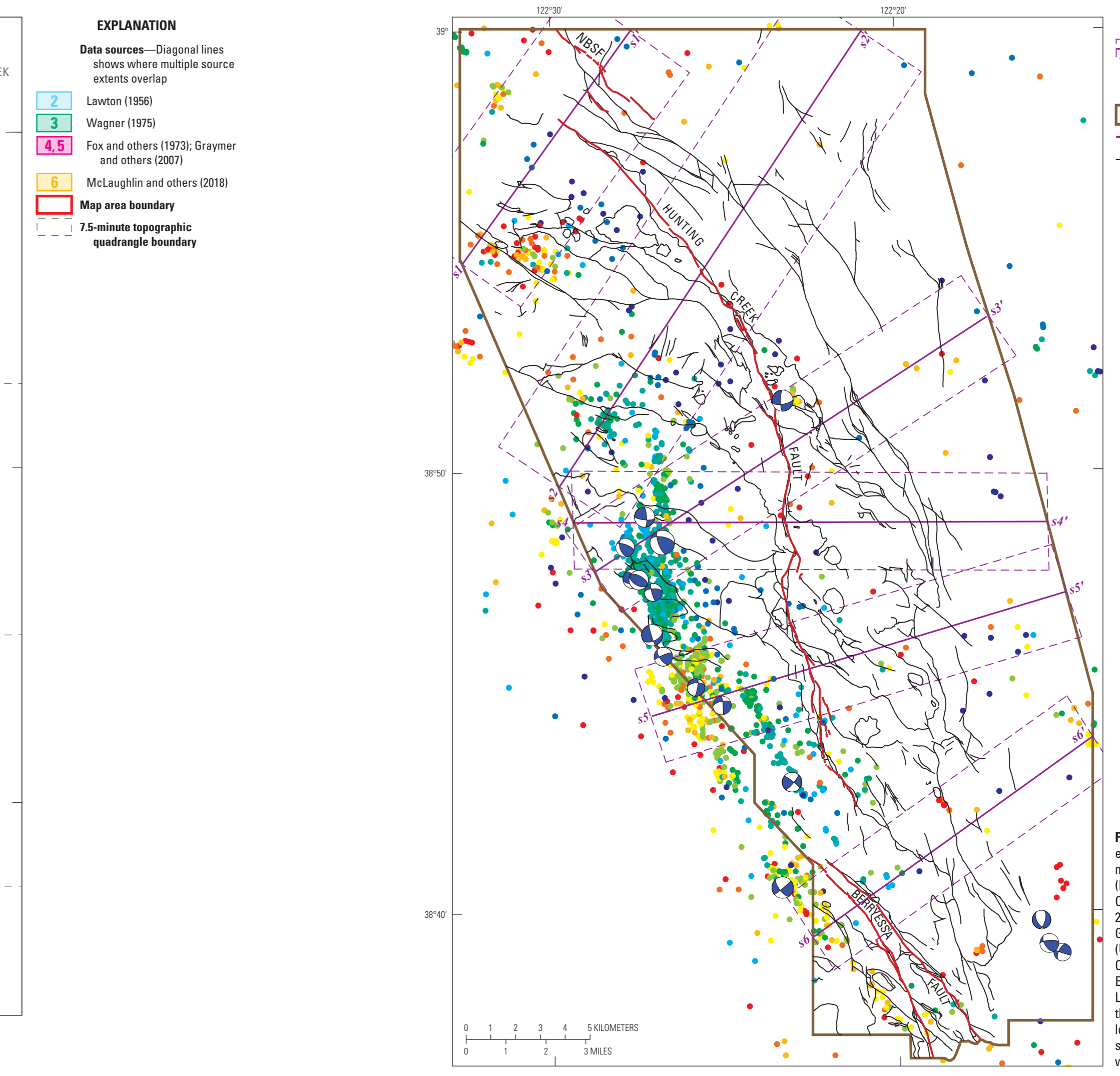
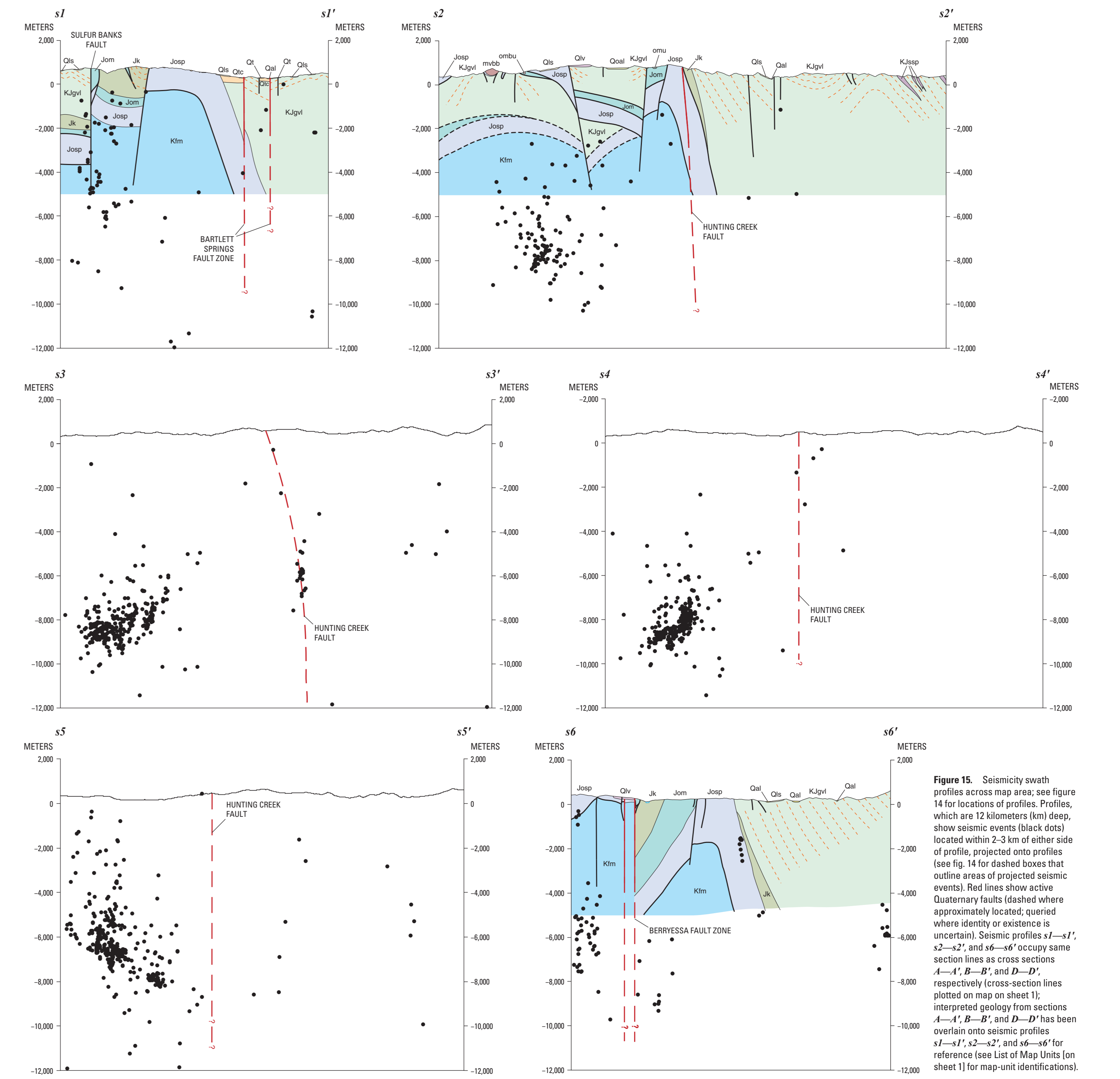
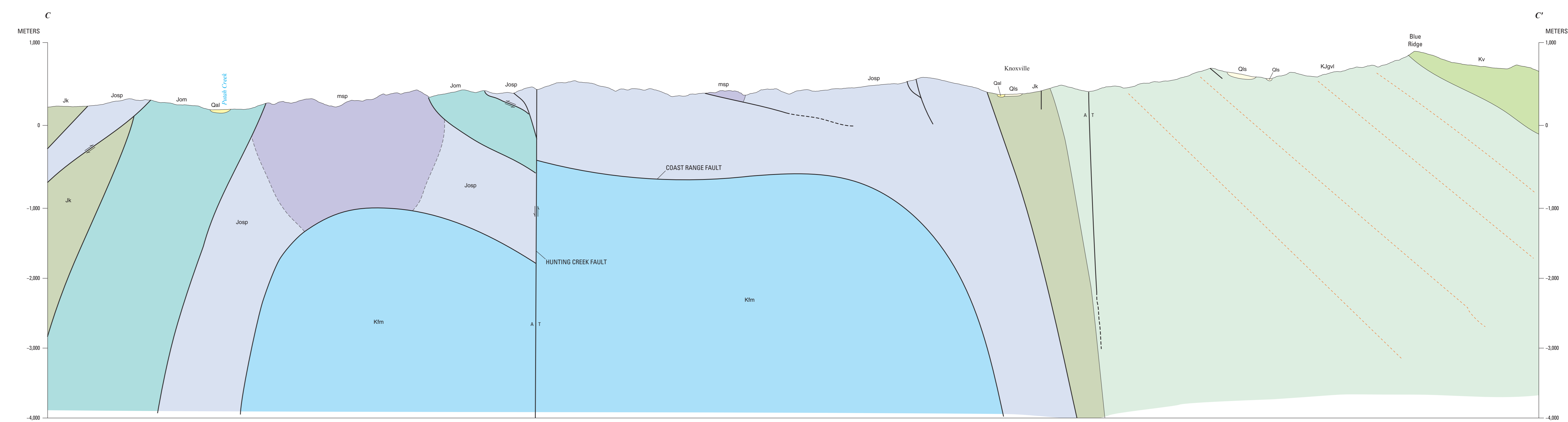
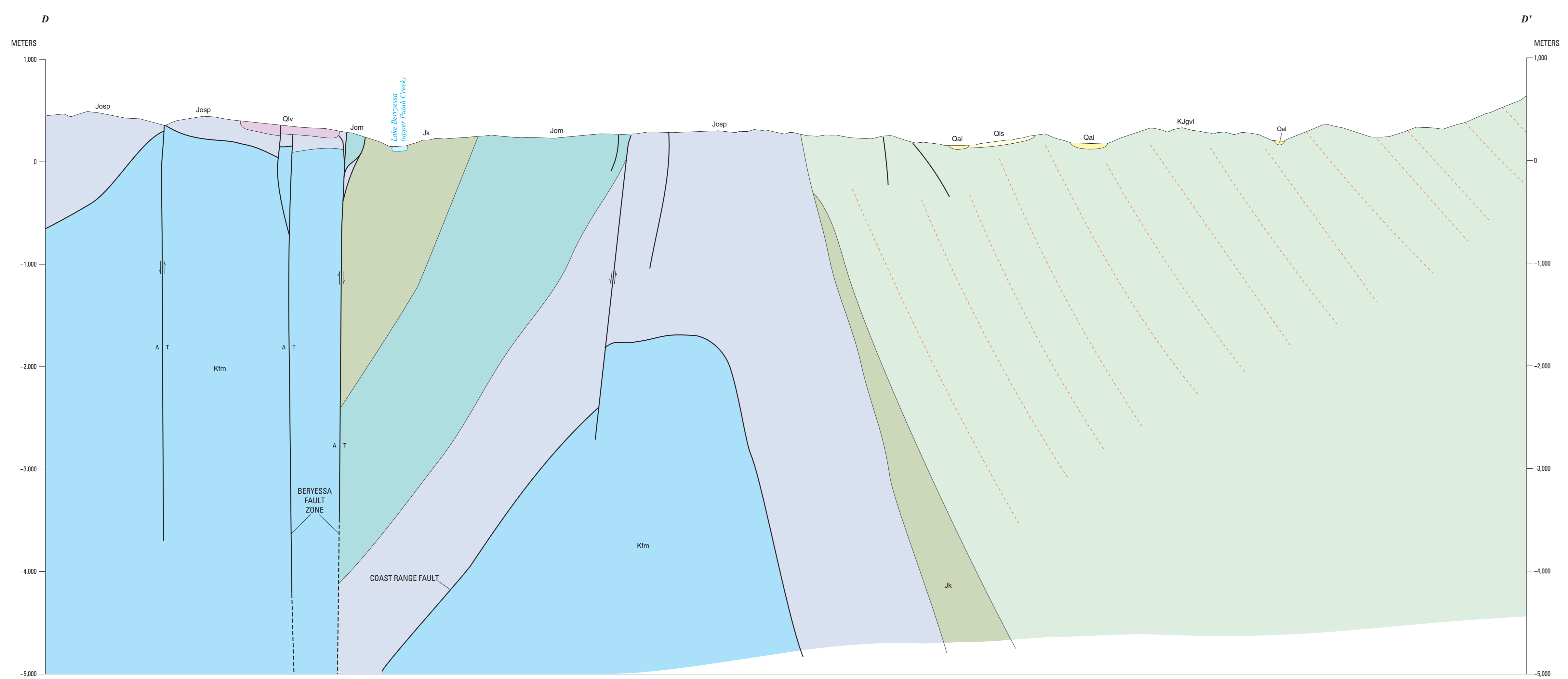
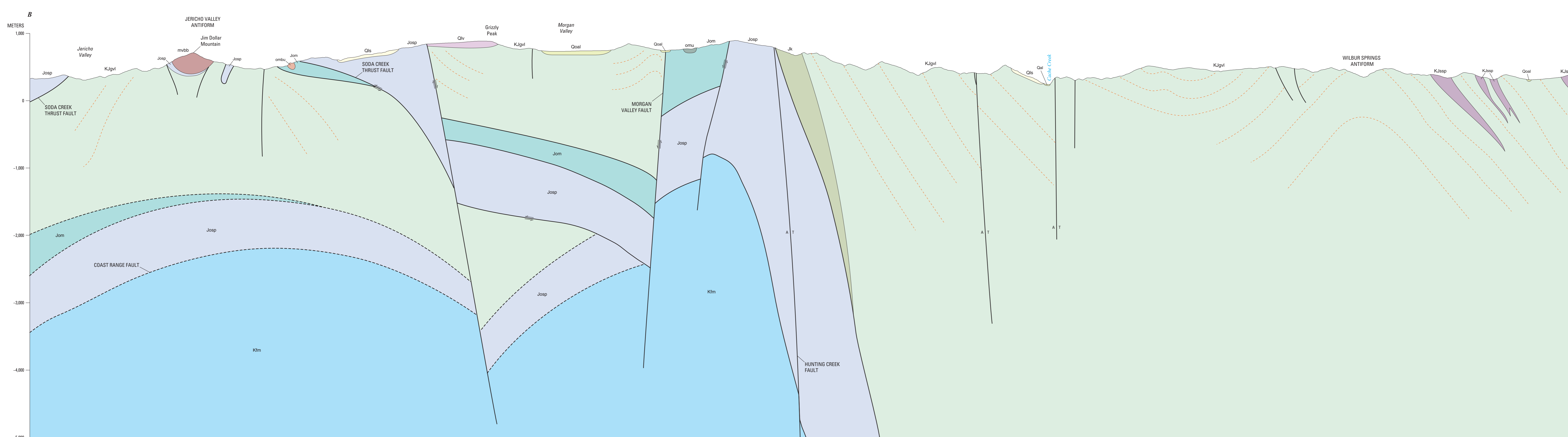


Figure 4. Map of seismicity in map area, showing earthquake epicenters (dots, colored by depth) and focal mechanisms (for earthquakes that have moment magnitude M_L values larger than 3). Earthquake data are from northern California double-difference catalog (Waldhauser and Schaff, 2006; Waldhauser, 2006); focal-mechanism data are from U.S. Geological Survey (USGS) comprehensive earthquake catalog (USGS, 2013). Thick red lines show active faults: Hartley Creek Fault, Berryessa Fault, and southern part of northern Bartlett Springs Fault (NSF). Fault traces are from Lienkaemper (2010, 2012). Thin black lines show other faults that have unspecified sense of slip. Solid purple lines show locations of seismicity swath profiles (for example, A-A' in Figure 15). Dashed purple lines outline areas from which seismic events have been projected onto profiles.



Geologic Map and Structure Sections Along Part of the Southern Bartlett Springs Fault Zone and Adjacent Areas from Cache Creek to Lake Berryessa, Northern Coast Ranges, California

By
Benjamin L. Melosh, Jackson Bodtke, and Zenon Valin
2024

This report is a product of the U.S. Geological Survey's Earthquake Hazards Program and was prepared by the U.S. Geological Survey, Northern California Division, Menlo Park, California. The U.S. Geological Survey is a bureau of the U.S. Department of the Interior. The U.S. Geological Survey is an equal opportunity institution. This report is a product of the U.S. Geological Survey's Earthquake Hazards Program and was prepared by the U.S. Geological Survey, Northern California Division, Menlo Park, California. The U.S. Geological Survey is a bureau of the U.S. Department of the Interior. The U.S. Geological Survey is an equal opportunity institution. This report is a product of the U.S. Geological Survey's Earthquake Hazards Program and was prepared by the U.S. Geological Survey, Northern California Division, Menlo Park, California. The U.S. Geological Survey is a bureau of the U.S. Department of the Interior. The U.S. Geological Survey is an equal opportunity institution.