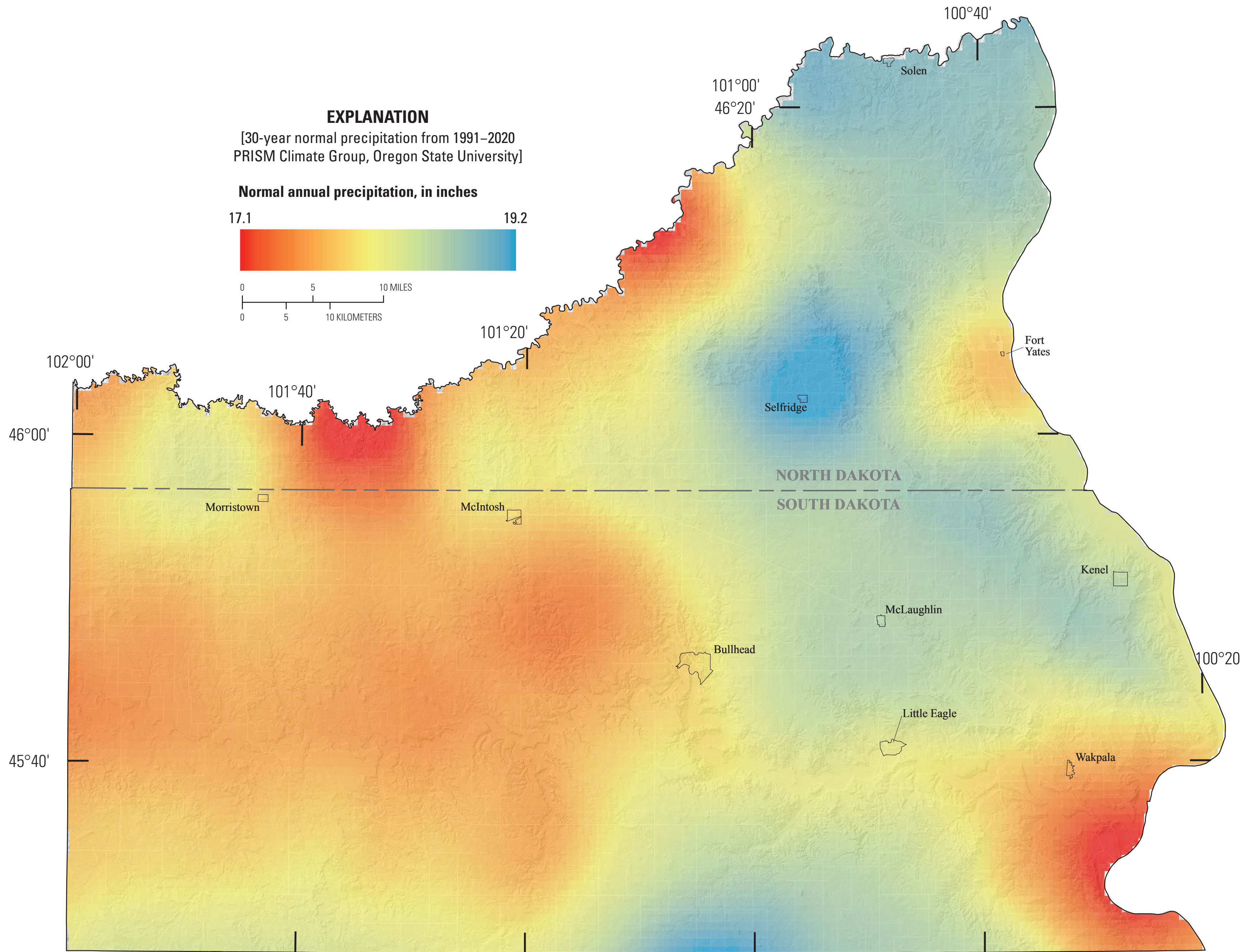
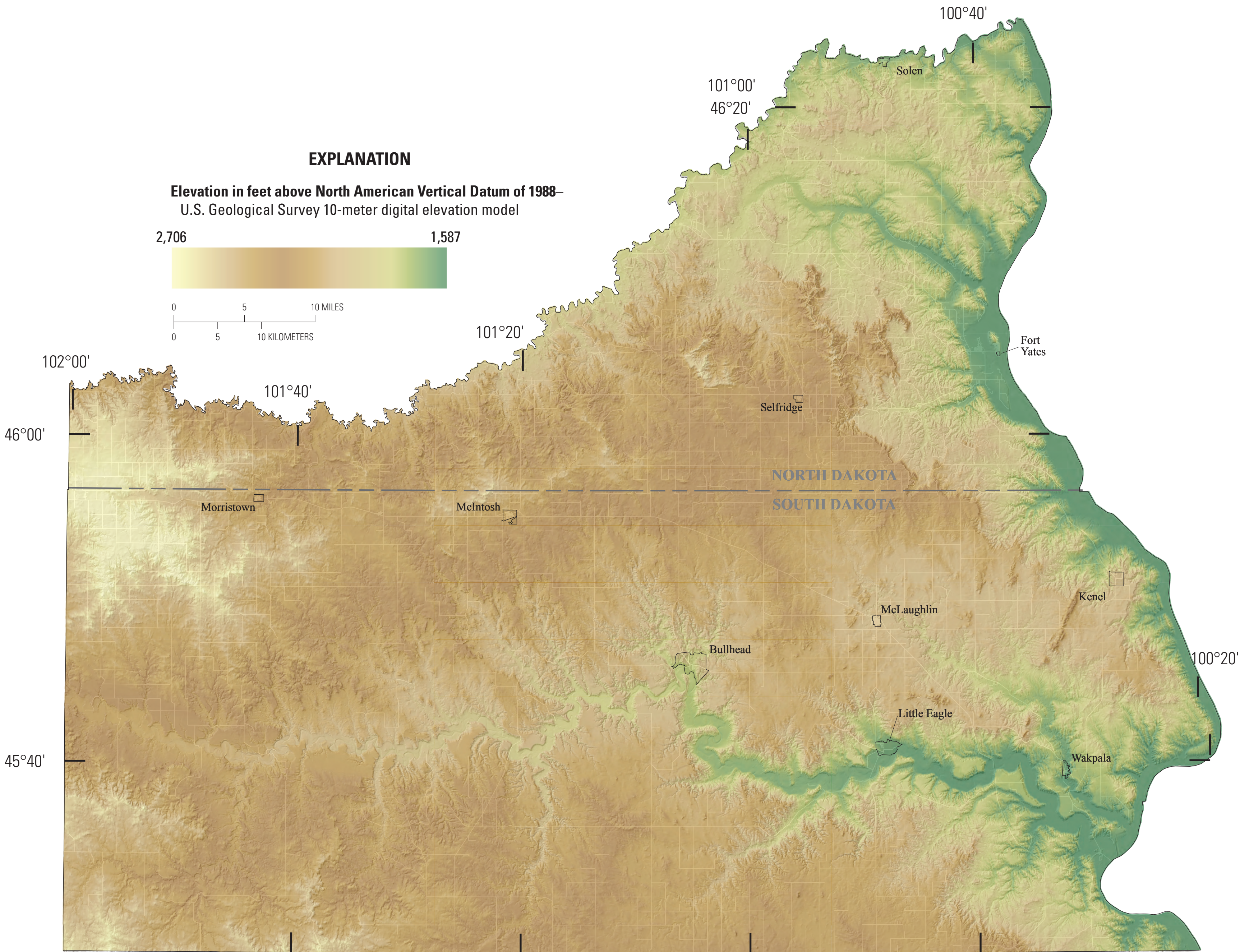
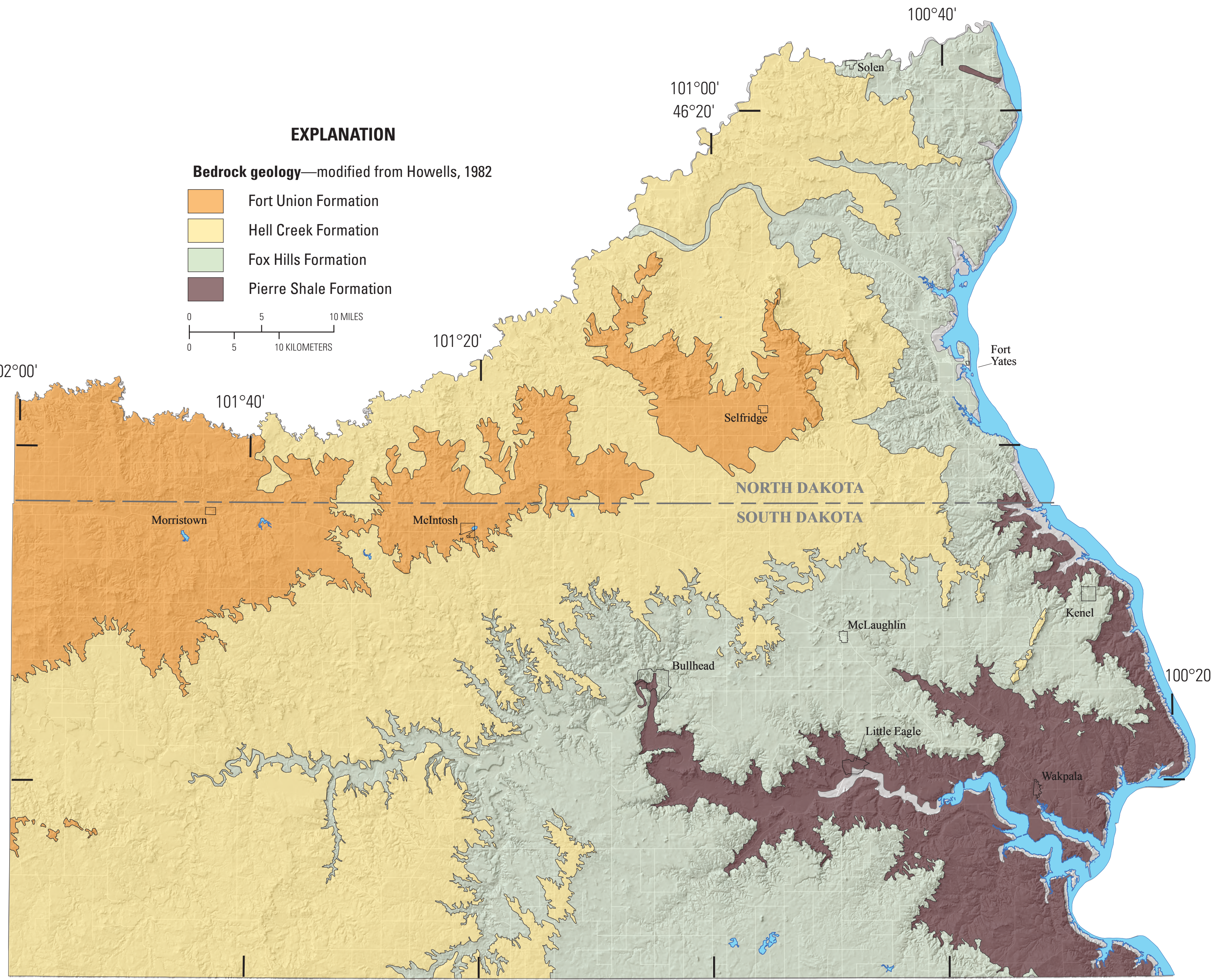


Base from U.S. Geological Survey digital data and the U.S. Census Bureau
Shaded relief from U.S. Geological Survey digital elevation model
North American Datum of 1983, Universal Transverse Mercator, Zone 14 North



Hydrogeologic Maps of the Standing Rock Reservation

By
Todd M. Anderson, and Robert F. Lundgren
2024

Any use of trade, firm, or product names is for descriptive purposes only and does not imply endorsement by the U.S. Government. Although this information product, for the most part, is in the public domain, it also may contain copyrighted materials as noted in the text.
Permission to reproduce copyrighted items must be secured from the copyright owner.
Suggested citation: Anderson, T.M., Lundgren, R.F., 2024, Generalized Paleogeographic Maps of the Principal Aquifers of the Standing Rock Reservation, U.S. Geological Survey Scientific Investigations Map 3516, 4 sheets, 1:50,000 scale, <https://doi.org/10.3133/SI3516>.
Associated data for this publication: Anderson, T.M., 2024, Data Used in the Construction of Generalized Paleogeographic Maps of the Principal Aquifers of the Standing Rock Reservation, U.S. Geological Survey data release, <https://doi.org/10.3133/D15087PMS0101>.
This map is offered as an online-only, digital publication. Users should be aware that, because of differences in rendering processes and pixel resolution, some slight distortion of scale may occur when viewing it on a computer screen or when printing it on an electronic device, even when it is viewed or printed at its intended publication scale. ISSN 2228-1529 (online)