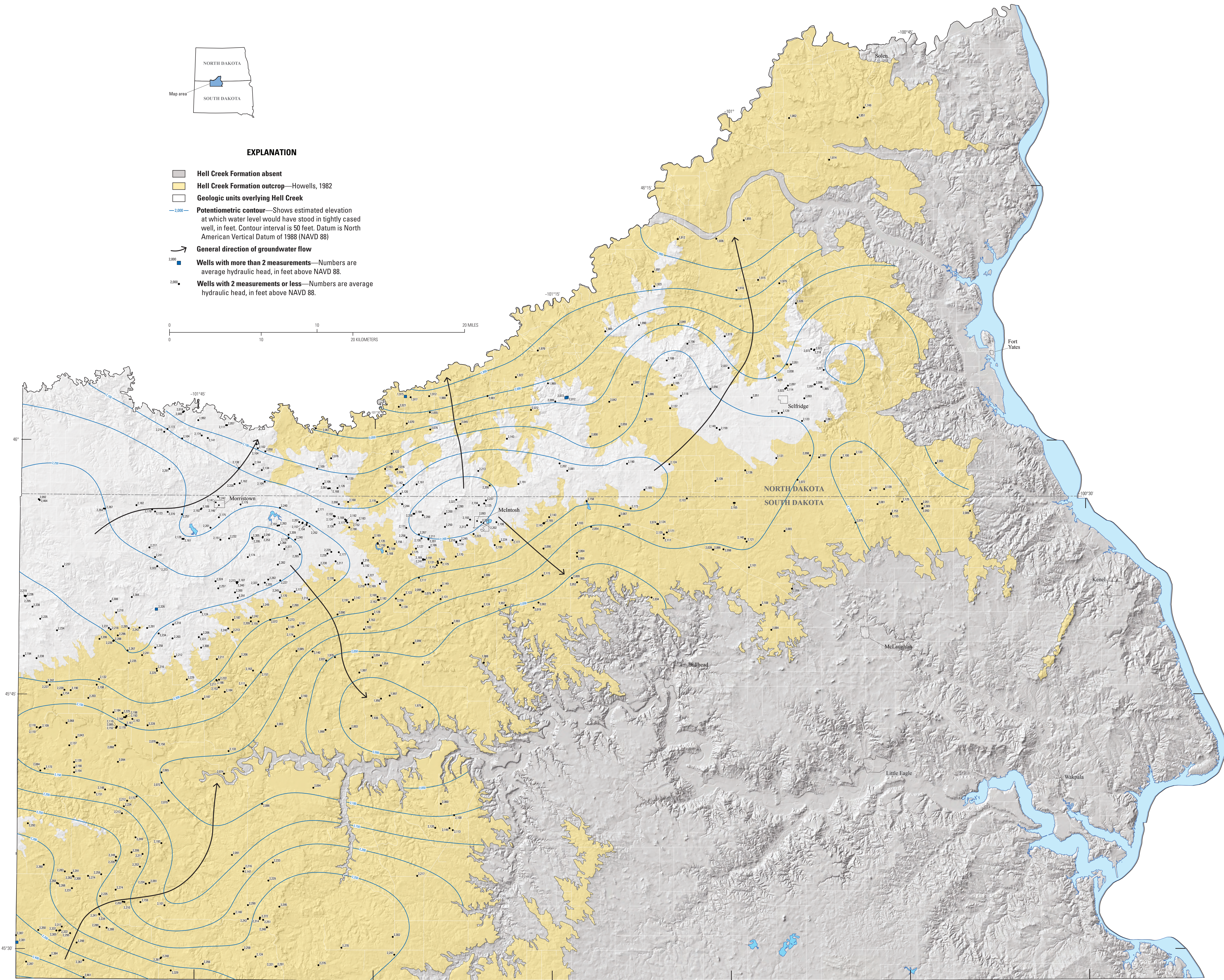
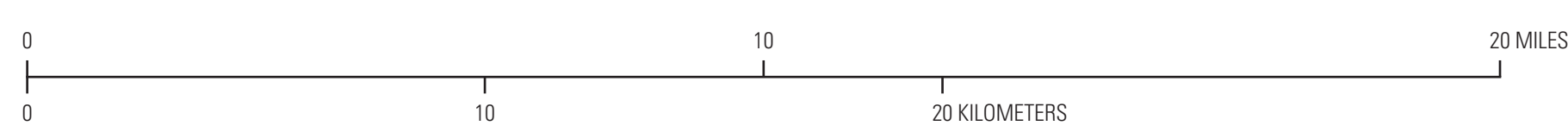


EXPLANATION

- Hell Creek Formation absent
- Hell Creek Formation outcrop—Howells, 1982
- Geologic units overlying Hell Creek
- Potentiometric contour—Shows estimated elevation at which water level would have stood in tightly cased well, in feet. Contour interval is 50 feet. Datum is North American Vertical Datum of 1988 (NAVD 88)
- General direction of groundwater flow
- Wells with more than 2 measurements—Numbers are average hydraulic head, in feet above NAVD 88.
- Wells with 2 measurements or less—Numbers are average hydraulic head, in feet above NAVD 88.



Base from U.S. Geological Survey digital data and the U.S. Census Bureau
Shaded relief from U.S. Geological Survey digital elevation model
North American Datum of 1983, Universal Transverse Mercator, Zone 14 North

Generalized potentiometric surface of the Hell Creek Formation within the Standing Rock Reservation

By
Todd M. Anderson, and Robert F. Lundgren
2024

Any use of trade, firm, or product names is for descriptive purposes only and does not imply endorsement by the U.S. Government. Although this information product is for the most part in the public domain, it also may contain copyrighted materials as noted in the text.
Permission to reproduce copyright items must be secured from the copyright owner.
Suggested citation: Anderson, T.M., Lundgren, R.F., 2024, Generalized Potentiometric Maps of the Principal Aquifers of the Standing Rock Reservation, U.S. Geological Survey Scientific Investigations Map 3516, 4 sheets, 17 p. pamphlet, <https://doi.org/10.3133/SI3516>.
Associated data for this publication: Anderson, T.M., 2023, Data Used in the Construction of Generalized Potentiometric Maps of the Principal Aquifers of the Standing Rock Reservation, U.S. Geological Survey data release 10001001, <https://doi.org/10.3133/D10001001>.
This map is offered as an online-only, digital publication. Users should be aware that, because of differences in rendering processes and pixel resolution, some slight distortion of scale may occur when viewing a map on a computer screen or when printing it on an electronic platform, even when it is viewed or printed at its intended publication scale (1:500,000).