

Figure 2. Structural fabric diagrams for the Bellows Falls 7.5 x 15-minute quadrangle according to structural domains I through V shown in figure 1; deformation history follows Walsh and others (2012). Stereonets are equal-area, lower-hemisphere projections plotted and contoured using the computer program Stereonet version 9.2.3 (Allmendinger and others, 2013; Cardon and Allmendinger, 2013). Planar data were converted to poles except for some S₁ structures. Contour interval is 2 percent percent of area. The number of structural measurements in each dataset is indicated by "n" below each diagram. In the "T-motion" row, contours are on the intersection lineation in structural domain I; in domains II-V, contours are on the mineral lineation. In the "Folds" row, the numbers below each diagram represent the number of folds in each deformation category shown.

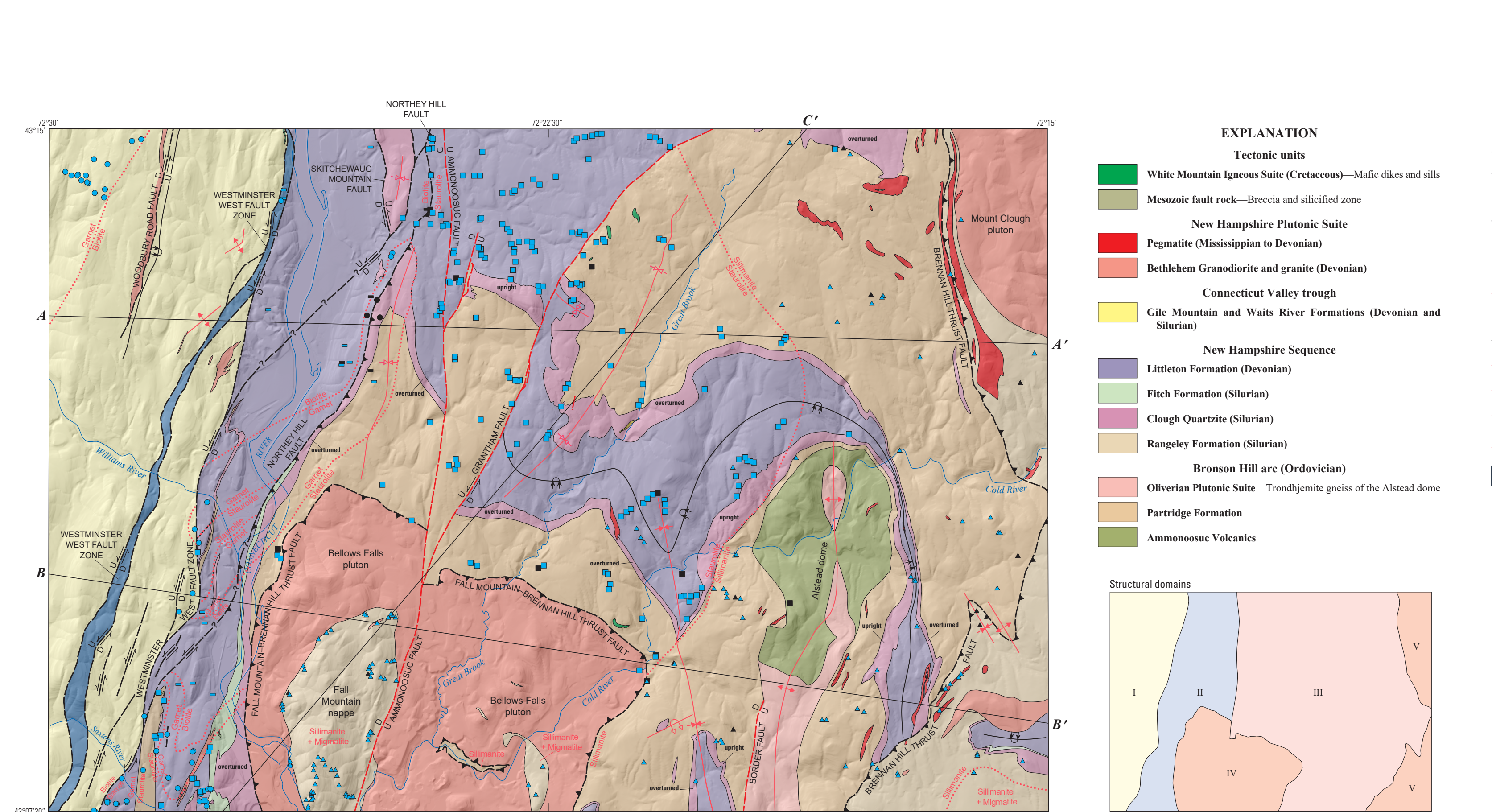


Figure 3. Bedrock geologic map of the Bellows Falls 7.5 x 15-minute quadrangle. The map shows the distribution of geological units, faults, and structural features. The legend includes symbols for dominant foliation, schistosity, T-motion toward observer, and structural domains. The map is color-coded to show different geological units and structural features. The legend includes symbols for dominant foliation, schistosity, T-motion toward observer, and structural domains. The map is color-coded to show different geological units and structural features.

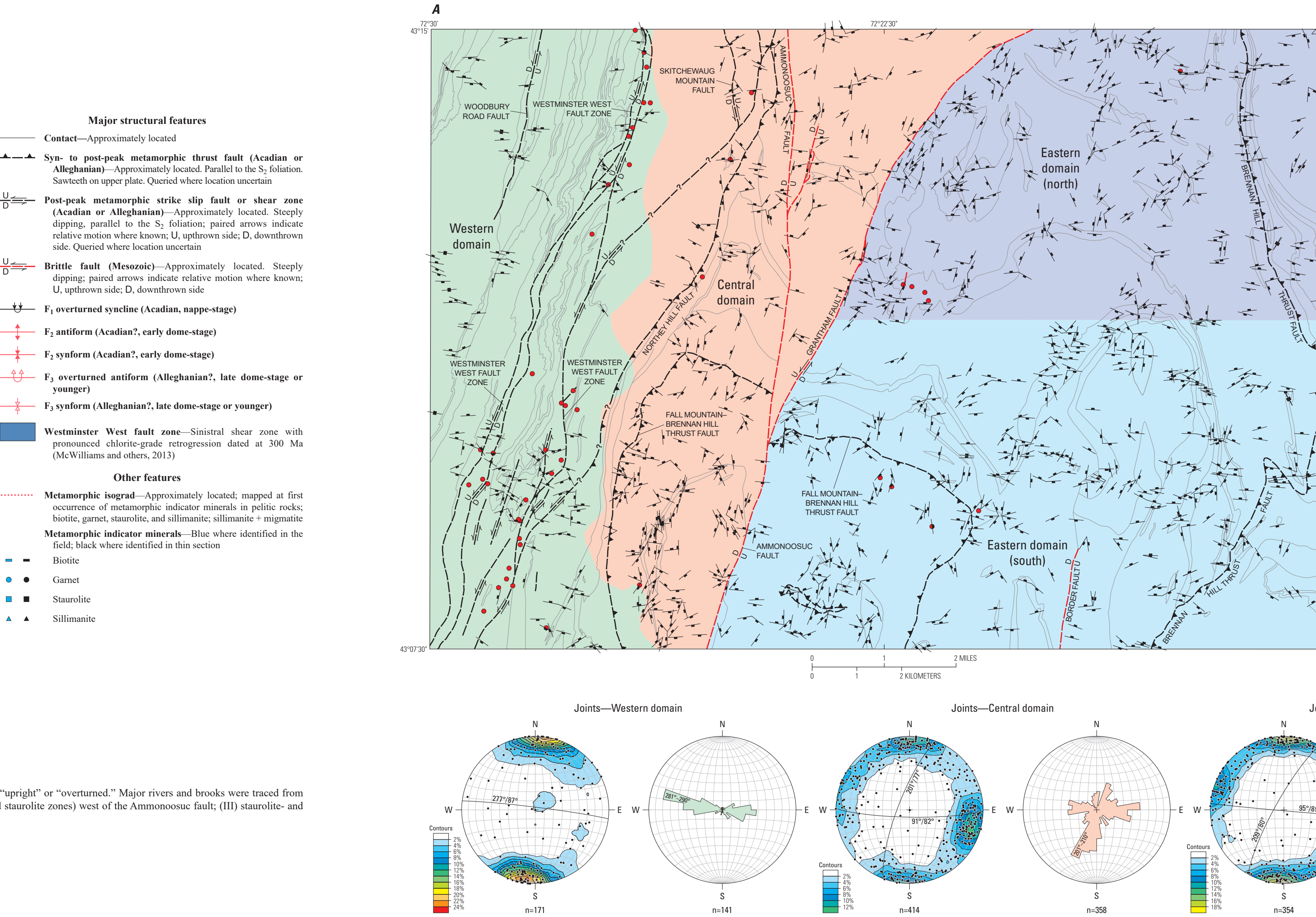


Figure 4. Bedrock geologic map of the Bellows Falls 7.5 x 15-minute quadrangle. The map shows the distribution of geological units, faults, and structural features. The legend includes symbols for dominant foliation, schistosity, T-motion toward observer, and structural domains. The map is color-coded to show different geological units and structural features. The legend includes symbols for dominant foliation, schistosity, T-motion toward observer, and structural domains. The map is color-coded to show different geological units and structural features.

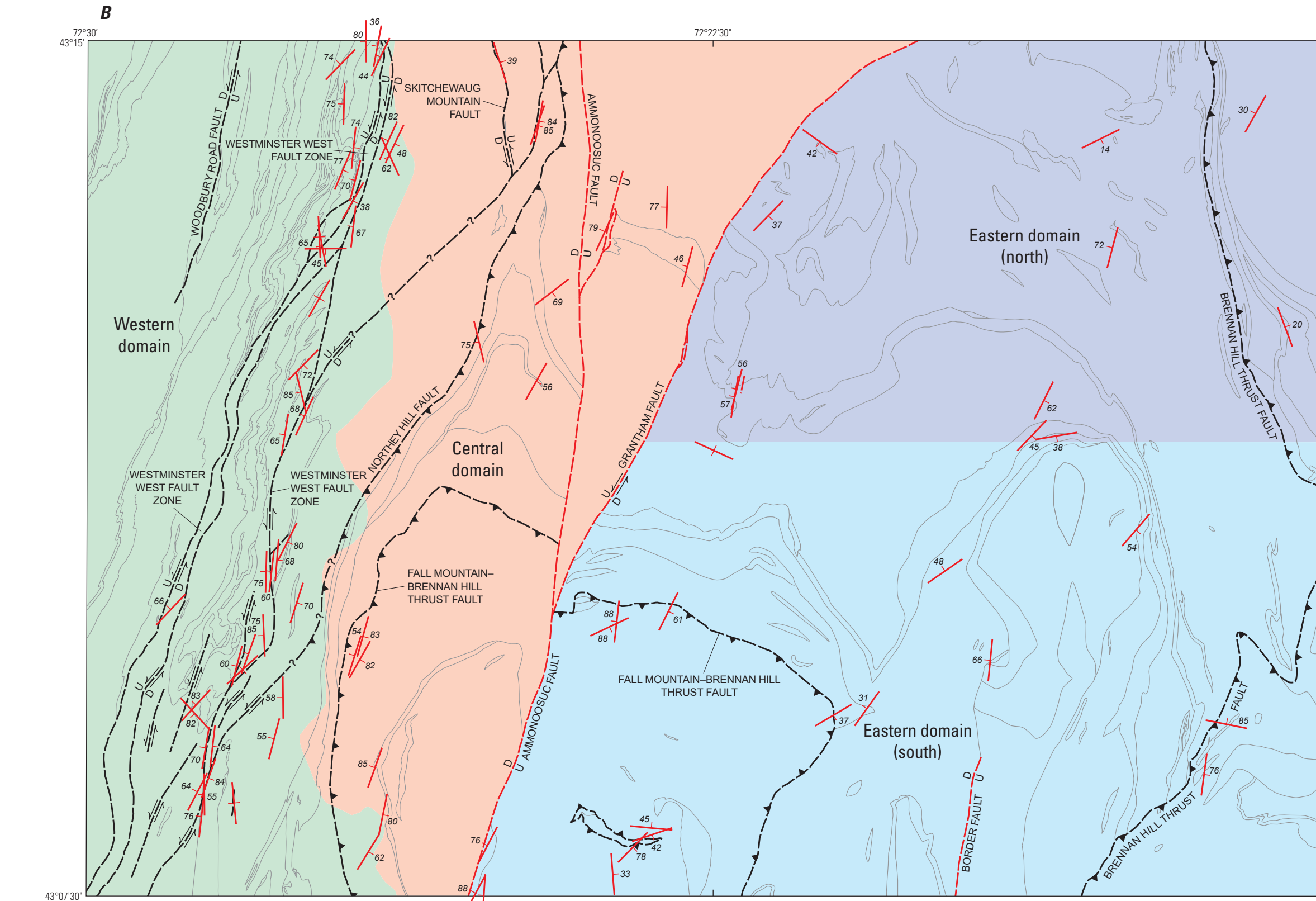


Figure 5. Bedrock geologic map of the Bellows Falls 7.5 x 15-minute quadrangle. The map shows the distribution of geological units, faults, and structural features. The legend includes symbols for dominant foliation, schistosity, T-motion toward observer, and structural domains. The map is color-coded to show different geological units and structural features. The legend includes symbols for dominant foliation, schistosity, T-motion toward observer, and structural domains. The map is color-coded to show different geological units and structural features.

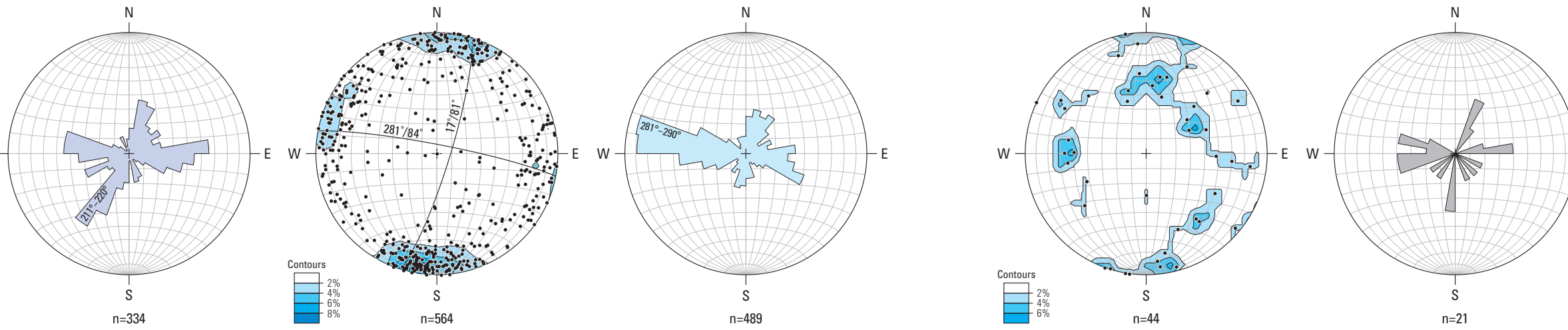


Figure 6. Bedrock geologic map of the Bellows Falls 7.5 x 15-minute quadrangle. The map shows the distribution of geological units, faults, and structural features. The legend includes symbols for dominant foliation, schistosity, T-motion toward observer, and structural domains. The map is color-coded to show different geological units and structural features. The legend includes symbols for dominant foliation, schistosity, T-motion toward observer, and structural domains. The map is color-coded to show different geological units and structural features.

REFERENCES CITED

Almshoff, J.N., and Karklow, P., 1990. Zoned U-Pb data for the Mesozoic and Barred Volcanic Members of the Mesozoic Formation and a dike cutting the Standing Pool Volcanics, southeastern Vermont, in Slack, J.F., ed., Summary results of the Glen Falls CSMAP project, New York, Vermont, and New Hampshire: U.S. Geological Survey Bulletin 1887, p. D1-D10. [Also available at <https://doi.org/10.3133/b1887>.]

Allmendinger, R.W., Cardon, N.C., and Fisher, D., 2013. Structural geology algorithms: Vector & tensor. Cambridge, United Kingdom: Cambridge University Press, 289 p.

Armstrong, R.L., 1997. Preliminary bedrock geologic map of the Vermont part of the Bellows Falls 7.5 x 15-minute quadrangle, Windham and Windsor Counties, Vermont: U.S. Geological Survey Open-File Report 97-284, 1 sheet, scale 1:24,000, 8 1/2 x 11 in., pamphlet. [Also available at <https://doi.org/10.3133/ofr97284>.]

Bradley, D.C., Stone, E., Bachwald, R., Browning, S., Brownell, J., O'Sullivan, P., and McCauley, A., 2016. Geochronology and tectonic context of Illimistocan metamorphic granulites in the Appalachians. Canadian Mineralogist, v. 54, no. 4, p. 945-969. [Also available at <https://doi.org/10.3749/canmin.1600053>.]

Cardon, N., and Allmendinger, R.W., 2013. Spherical projections with OXSStereoNet. Computers & Geosciences, v. 51, p. 193-205. [Also available at <https://doi.org/10.1016/j.cageo.2012.07.021>.]

Chamberlain, C.P., Thompson, J.B., Jr., and Allen, T., 1988. Stratigraphy and structure of the Fall Mountain and Skitchewick nappes, southwestern New Hampshire, in Bolter, W.A., ed., Guidebook for field trips in southeastern New Hampshire, southwestern Vermont, and north-central Massachusetts: New England Intercollegiate Geological Conference, 88th Annual Meeting, Keene, N.H., p. 32-39.

Holmes, F.M., Bolter, W.A., Hack, N.L., Jr., Finney, S.C., and Alenikoff, J.N., 1990. Devonian plants from southern Quebec and northern New Hampshire and the age of the Connecticut Valley Trough. American Journal of Science, v. 290, no. 4, p. 360-395. [Also available at <https://doi.org/10.2475/ajsc.290.4.360>.]

Kruger, F.C., 1946. Structure and metamorphism of the Bellows Falls quadrangle of New Hampshire and Vermont. Geological Society of America Bulletin, v. 57, no. 2, p. 101-206. [Also available at [https://doi.org/10.1130/0016-7606\(1946\)57\[101:SAKQDQ\]2.0.CO;2](https://doi.org/10.1130/0016-7606(1946)57[101:SAKQDQ]2.0.CO;2).]

Lynn, J.B., Bolter, W.A., Moore, R.H., and Thompson, J.B., 1997. Bedrock geologic map of New Hampshire: U.S. Geological Survey State Geologic Map 1:250,000, scale 1:250,000 and 1:500,000.

McAleer, R.J., 2016. Constraining crystal chemical and argon isotopic data to date deformation: New constraints on the tectonic history of New Hampshire. Indiana University, Ph.D. dissertation, 324 p. [Also available at (U-Pb) zircon crystallization age of 455.11 million years before present (Ma, map-view) (Merschat and others, 2015; Walsh and others, 2015, 2020). Geochronology of the Obolens Plutonite Suite are separated into two bodies: a smaller body to the north (<13 kilometers (km) long) and a larger body extending southwest beyond the quadrangle border. SHRIMP U-Pb zircon crystallization ages from these bodies are 485.1 Ma and 465.1 Ma, respectively (Merschat and others, 2015; Walsh and others, 2015, 2020). Map-scale truncations, a metamorphic break (stratigraphic zone) against biotite and garnet, and a biotite isograd (biotite isograd) in the west side of the Skitchewick nappe, is flanked by the Fall Mountain-Brennan Hill thrust fault and contains sillimanite-zone and higher grade Silurian Rangely Formation rocks intruded by the ~400-Ma Bethlehem-Granodiorite (Dg) (Merschat and others, 2015, 2025). The Fall Mountain-Brennan Hill thrust fault truncates units of the Skitchewick nappe and juxtaposes the Bethlehem Granodiorite and migmatite, sillimanite + peridotite (H) foliages zone. Rangely Formation rocks over stratigraphic zone of the Skitchewick nappe. Reduction in grain size and increase in the west of biotite and muscovite in the Bethlehem Granodiorite occur near the Fall Mountain-Brennan Hill thrust fault. Mineral inclusions plunge southwest, and kinematic indicators and fold patterns support northward-directed transport. The Fall Mountain nappe may be a west-directed shear fold, similar to the Skitchewick nappe and other F₁ nappe-scale folds (Walsh and others, 2020).

"Aragon (Ar)" Ar muscovite and amphibole ages across the Monroe, Skitchewick and Fall Mountain nappes suggest Devonian to Mississippian cooling of the Brennan Hill anticlinorium. Amphibole from the Skitchewick nappe, exposed in a window through the Fall Mountain nappe, yields the oldest age at ~380 Ma, while amphibole from the Aistad dome yields ages of <330 Ma. Muscovite from the Fall Mountain nappe and the Littleton Formation in the Monroe nappe in Vermont yields ages of 335 Ma, while muscovite ages near the Aistad dome are younger, about 300 Ma. Collectively, the "Ar" Ar data suggest peak metamorphism in the Skitchewick nappe prior to ~380 Ma. Followed by emplacement of the Fall Mountain nappes between 335 and 380 Ma. The Aistad dome may be formed at ~330 Ma later, and local late foliation and younger muscovite ages are probably related to late Alleghenian sinistral tectonics. "Ar" Ar muscovite ages of ~300 Ma from the Westminster West fault zone indicate a late sinistral Alleghenian fault (McWilliams and others, 2013). Extensional Mesozoic faults cut all structural levels. Mesozoic faults have normal dip-slip and strike-slip kinematics. Apatite fission track (AFT) data indicate that the brittle Ammonoosuc fault was active prior to about 100 Ma. Brittle faults and independent foliation surfaces in the vicinity of the Westminster West fault zone, especially along intersecting F₁ and F₂ faults, suggest some Mesozoic activity on regional brittle faults, like the Granitic fault, and that may have continued into the Paleocene (Scholar and others, 2015). Brittle faults and independent foliation surfaces in the vicinity of the Westminster West fault zone, especially along intersecting F₁ and F₂ faults, suggest some Mesozoic activity on regional brittle faults, like the Granitic fault, and that may have continued into the Paleocene (Scholar and others, 2015).

Bolter, W.A., 1990. Bedrock geologic map of the Bellows Falls 7.5 x 15-minute quadrangle, Windham and Windsor Counties, Vermont, and Sullivan and Cheshire Counties, New Hampshire: U.S. Geological Survey data release, <https://doi.org/10.3133/d15006>.

Bolter, W.A., 1990. Bedrock geologic map of the Bellows Falls 7.5 x 15-minute quadrangle, Windham and Windsor Counties, Vermont, and Sullivan and Cheshire Counties, New Hampshire: U.S. Geological Survey data release, <https://doi.org/10.3133/d15006>.

Bolter, W.A., 1990. Bedrock geologic map of the Bellows Falls 7.5 x 15-minute quadrangle, Windham and Windsor Counties, Vermont, and Sullivan and Cheshire Counties, New Hampshire: U.S. Geological Survey data release, <https://doi.org/10.3133/d15006>.

Bolter, W.A., 1990. Bedrock geologic map of the Bellows Falls 7.5 x 15-minute quadrangle, Windham and Windsor Counties, Vermont, and Sullivan and Cheshire Counties, New Hampshire: U.S. Geological Survey data release, <https://doi.org/10.3133/d15006>.

Bolter, W.A., 1990. Bedrock geologic map of the Bellows Falls 7.5 x 15-minute quadrangle, Windham and Windsor Counties, Vermont, and Sullivan and Cheshire Counties, New Hampshire: U.S. Geological Survey data release, <https://doi.org/10.3133/d15006>.

Bolter, W.A., 1990. Bedrock geologic map of the Bellows Falls 7.5 x 15-minute quadrangle, Windham and Windsor Counties, Vermont, and Sullivan and Cheshire Counties, New Hampshire: U.S. Geological Survey data release, <https://doi.org/10.3133/d15006>.

Bolter, W.A., 1990. Bedrock geologic map of the Bellows Falls 7.5 x 15-minute quadrangle, Windham and Windsor Counties, Vermont, and Sullivan and Cheshire Counties, New Hampshire: U.S. Geological Survey data release, <https://doi.org/10.3133/d15006>.

Bolter, W.A., 1990. Bedrock geologic map of the Bellows Falls 7.5 x 15-minute quadrangle, Windham and Windsor Counties, Vermont, and Sullivan and Cheshire Counties, New Hampshire: U.S. Geological Survey data release, <https://doi.org/10.3133/d15006>.

Bolter, W.A., 1990. Bedrock geologic map of the Bellows Falls 7.5 x 15-minute quadrangle, Windham and Windsor Counties, Vermont, and Sullivan and Cheshire Counties, New Hampshire: U.S. Geological Survey data release, <https://doi.org/10.3133/d15006>.

Bolter, W.A., 1990. Bedrock geologic map of the Bellows Falls 7.5 x 15-minute quadrangle, Windham and Windsor Counties, Vermont, and Sullivan and Cheshire Counties, New Hampshire: U.S. Geological Survey data release, <https://doi.org/10.3133/d15006>.

Bolter, W.A., 1990. Bedrock geologic map of the Bellows Falls 7.5 x 15-minute quadrangle, Windham and Windsor Counties, Vermont, and Sullivan and Cheshire Counties, New Hampshire: U.S. Geological Survey data release, <https://doi.org/10.3133/d15006>.

Bolter, W.A., 1990. Bedrock geologic map of the Bellows Falls 7.5 x 15-minute quadrangle, Windham and Windsor Counties, Vermont, and Sullivan and Cheshire Counties, New Hampshire: U.S. Geological Survey data release, <https://doi.org/10.3133/d15006>.

Bolter, W.A., 1990. Bedrock geologic map of the Bellows Falls 7.5 x 15-minute quadrangle, Windham and Windsor Counties, Vermont, and Sullivan and Cheshire Counties, New Hampshire: U.S. Geological Survey data release, <https://doi.org/10.3133/d15006>.

Bolter, W.A., 1990. Bedrock geologic map of the Bellows Falls 7.5 x 15-minute quadrangle, Windham and Windsor Counties, Vermont, and Sullivan and Cheshire Counties, New Hampshire: U.S. Geological Survey data release, <https://doi.org/10.3133/d15006>.

Bolter, W.A., 1990. Bedrock geologic map of the Bellows Falls 7.5 x 15-minute quadrangle, Windham and Windsor Counties, Vermont, and Sullivan and Cheshire Counties, New Hampshire: U.S. Geological Survey data release, <https://doi.org/10.3133/d15006>.

Bolter, W.A., 1990. Bedrock geologic map of the Bellows Falls 7.5 x 15-minute quadrangle, Windham and Windsor Counties, Vermont, and Sullivan and Cheshire Counties, New Hampshire: U.S. Geological Survey data release, <https://doi.org/10.3133/d15006>.

Bolter, W.A., 1990. Bedrock geologic map of the Bellows Falls 7.5 x 15-minute quadrangle, Windham and Windsor Counties, Vermont, and Sullivan and Cheshire Counties, New Hampshire: U.S. Geological Survey data release, <https://doi.org/10.3133/d15006>.

Bolter, W.A., 1990. Bedrock geologic map of the Bellows Falls 7.5 x 15-minute quadrangle, Windham and Windsor Counties, Vermont, and Sullivan and Cheshire Counties, New Hampshire: U.S. Geological Survey data release, <https://doi.org/10.3133/d15006>.

Bolter, W.A., 1990. Bedrock geologic map of the Bellows Falls 7.5 x 15-minute quadrangle, Windham and Windsor Counties, Vermont, and Sullivan and Cheshire Counties, New Hampshire: U.S. Geological Survey data release, <https://doi.org/10.3133/d15006>.

Bolter, W.A., 1990. Bedrock geologic map of the Bellows Falls 7.5 x 15-minute quadrangle, Windham and Windsor Counties, Vermont, and Sullivan and Cheshire Counties, New Hampshire: U.S. Geological Survey data release, <https://doi.org/10.3133/d15006>.

Bolter, W.A., 1990. Bedrock geologic map of the Bellows Falls 7.5 x 15-minute quadrangle, Windham and Windsor Counties, Vermont, and Sullivan and Cheshire Counties, New Hampshire: U.S. Geological Survey data release, <https://doi.org/10.3133/d15006>.

Bolter, W.A., 1990. Bedrock geologic map of the Bellows Falls 7.5 x 15-minute quadrangle, Windham and Windsor Counties, Vermont, and Sullivan and Cheshire Counties, New Hampshire: U.S. Geological Survey data release, <https://doi.org/10.3133/d15006>.

Bolter, W.A., 1990. Bedrock geologic map of the Bellows Falls 7.5 x 15-minute quadrangle, Windham and Windsor Counties, Vermont, and Sullivan and Cheshire Counties, New Hampshire: U.S. Geological Survey data release, <https://doi.org/10.3133/d15006>.

Bolter, W.A., 1990. Bedrock geologic map of the Bellows Falls 7.5 x 15-minute quadrangle, Windham and Windsor Counties, Vermont, and Sullivan and Cheshire Counties, New Hampshire: U.S. Geological Survey data release, <https://doi.org/10.3133/d15006>.

Bolter, W.A., 1990. Bedrock geologic map of the Bellows Falls 7.5 x 15-minute quadrangle, Windham and Windsor Counties, Vermont, and Sullivan and Cheshire Counties, New Hampshire: U.S. Geological Survey data release, <https://doi.org/10.3133/d15006>.

Bolter, W.A., 1990. Bedrock geologic map of the Bellows Falls 7.5 x 15-minute quadrangle, Windham and Windsor Counties, Vermont, and Sullivan and Cheshire Counties, New Hampshire: U.S. Geological Survey data release, <https://doi.org/10.3133/d15006>.

Bolter, W.A., 1990. Bedrock geologic map of the Bellows Falls 7.5 x 15-minute quadrangle, Windham and Windsor Counties, Vermont, and Sullivan and Cheshire Counties, New Hampshire: U.S. Geological Survey data release, <https://doi.org/10.3133/d15006>.

Bolter, W.A., 1990. Bedrock geologic map of the Bellows Falls 7.5 x 15-minute quadrangle, Windham and Windsor Counties, Vermont, and Sullivan and Cheshire Counties, New Hampshire: U.S. Geological Survey data release, <https://doi.org/10.3133/d15006>.

Bolter, W.A., 1990. Bedrock geologic map of the Bellows Falls 7.5 x 15-minute quadrangle, Windham and Windsor Counties, Vermont, and Sullivan and Cheshire Counties, New Hampshire: U.S. Geological Survey data release, <https://doi.org/10.3133/d15006>.

Bolter, W.A., 1990. Bedrock geologic map of the Bellows Falls 7.5 x 15-minute quadrangle, Windham and Windsor Counties, Vermont, and Sullivan and Cheshire Counties, New Hampshire: U.S. Geological Survey data release, <https://doi.org/10.3133/d15006>.

Bolter, W.A., 1990. Bedrock geologic map of the Bellows Falls 7.5 x 15-minute quadrangle, Windham and Windsor Counties, Vermont, and Sullivan and Cheshire Counties, New Hampshire: U.S. Geological Survey data release, <https://doi.org/10.3133/d15006>.

Bolter, W.A., 1990. Bedrock geologic map of the Bellows Falls 7.5 x 15-minute quadrangle, Windham and Windsor Counties, Vermont, and Sullivan and Cheshire Counties, New Hampshire: U.S. Geological Survey data release, <https://doi.org/10.3133/d15006>.

Bolter, W.A., 1990. Bedrock geologic map of the Bellows Falls 7.5 x 15-minute quadrangle, Windham and Windsor Counties, Vermont, and Sullivan and Cheshire Counties, New Hampshire: U.S. Geological Survey data release, <https://doi.org/10.3133/d15006>.

Bolter, W.A., 1990. Bedrock geologic map of the Bellows Falls 7.5 x 15-minute quadrangle, Windham and Windsor Counties, Vermont, and Sullivan and Cheshire Counties, New Hampshire: U.S. Geological Survey data release, <https://doi.org/10.3133/d15006>.

Bolter, W.A., 1990. Bedrock geologic map of the Bellows Falls 7.5 x 15-minute quadrangle, Windham and Windsor Counties, Vermont, and Sullivan and Cheshire Counties, New Hampshire: U.S. Geological Survey data release, <https://doi.org/10.3133/d15006>.

Bolter, W.A., 1990. Bedrock geologic map of the Bellows Falls 7.5 x 15-minute quadrangle, Windham and Windsor Counties, Vermont, and Sullivan and Cheshire Counties, New Hampshire: U.S. Geological Survey data release, <https://doi.org/10.3133/d15006>.

Bolter, W.A., 1990. Bedrock geologic map of the Bellows Falls 7.5 x 15-minute quadrangle, Windham and Windsor Counties, Vermont, and Sullivan and Cheshire Counties, New Hampshire: U.S. Geological Survey data release, <https://doi.org/10.3133/d15006>.

Bolter, W.A., 1990. Bedrock geologic map of the Bellows Falls 7.5 x 15-minute quadrangle, Windham and Windsor Counties, Vermont, and Sullivan and Cheshire Counties, New Hampshire: U.S. Geological Survey data release, <https://doi.org/10.3133/d15006>.

Bolter, W.A., 1990. Bedrock geologic map of the Bellows Falls 7.5 x 15-minute quadrangle, Windham and Windsor Counties, Vermont, and Sullivan and Cheshire Counties, New Hampshire: U.S. Geological Survey data release, <https://doi.org/10.3133/d15006>.

Bolter, W.A., 1990. Bedrock geologic map of the Bellows Falls 7.5 x 15-minute quadrangle, Windham and Windsor Counties, Vermont, and Sullivan and Cheshire Counties, New Hampshire: U.S. Geological Survey data release, <https://doi.org/10.3133/d15006>.

Bolter, W.A., 1990. Bedrock geologic map of the Bellows Falls 7.5 x 15-minute quadrangle, Windham and Windsor Counties, Vermont, and Sullivan and Cheshire Counties, New Hampshire: U.S. Geological Survey data release, <https://doi.org/10.3133/d15006>.

Bolter, W.A., 1990. Bedrock geologic map of the Bellows Falls 7.5 x 15-minute quadrangle, Windham and Windsor Counties, Vermont, and Sullivan and Cheshire Counties, New Hampshire: U.S. Geological Survey data release, <https://doi.org/10.3133/d15006>.

Bolter, W.A., 1990. Bedrock geologic map of the Bellows Falls 7.5 x 15-minute quadrangle, Windham and Windsor Counties, Vermont, and Sullivan and Cheshire Counties, New Hampshire: U.S. Geological Survey data release, <https://doi.org/10.3133/d15006>.

Bolter, W.A., 1990. Bedrock geologic map of the Bellows Falls 7.5 x 15-minute quadrangle, Windham and Windsor Counties, Vermont, and Sullivan and Cheshire Counties, New Hampshire: U.S. Geological Survey data release, <https://doi.org/10.3133/d15006>.

Bolter, W.A., 1990. Bedrock geologic map of the Bellows Falls 7.5 x 15-minute quadrangle, Windham and Windsor Counties, Vermont, and Sullivan and Cheshire Counties, New Hampshire: U.S. Geological Survey data release, <https://doi.org/10.3133/d15006>.

Bolter, W.A., 1990. Bedrock geologic map of the Bellows Falls 7.5 x 15-minute quadrangle, Windham and Windsor Counties, Vermont, and Sullivan and Cheshire Counties, New Hampshire: U.S. Geological Survey data release, <https://doi.org/10.3133/d15006>.

Bolter, W.A., 1990. Bedrock geologic map of the Bellows Falls 7.5 x 15-minute quadrangle, Windham and Windsor Counties, Vermont, and Sullivan and Cheshire Counties, New Hampshire: U.S. Geological Survey data release, <https://doi.org/10.3133/d15006>.

Bolter, W.A., 1990. Bedrock geologic map of the Bellows Falls 7.5 x 15-minute quadrangle, Windham and Windsor Counties, Vermont, and Sullivan and Cheshire Counties, New Hampshire: U.S. Geological Survey data release, <https://doi.org/10.3133/d15006>.

Bolter, W.A., 1990. Bedrock geologic map of the Bellows Falls 7.5 x 15-minute quadrangle, Windham and Windsor Counties, Vermont, and Sullivan and Cheshire Counties, New Hampshire: U.S. Geological Survey data release, <https://doi.org/10.3133/d15006>.

Bolter, W.A., 1990. Bedrock geologic map of the Bellows Falls 7.5 x 15-minute quadrangle, Windham and Windsor Counties, Vermont, and Sullivan and Cheshire Counties, New Hampshire: U.S. Geological Survey data release, <https://doi.org/10.3133/d15006>.

Bolter, W.A., 1990. Bedrock geologic map of the Bellows Falls 7.5 x 15-minute quadrangle, Windham and Windsor Counties, Vermont, and Sullivan and Cheshire Counties, New Hampshire: U.S. Geological Survey data release, <https://doi.org/10.3133/d15006>.

Bolter, W.A., 1990. Bedrock geologic map of the Bellows Falls 7.5 x 15-minute quadrangle, Windham and Windsor Counties, Vermont, and Sullivan and Cheshire Counties, New Hampshire: U.S. Geological Survey data release, <https://doi.org/10.3133/d15006>.

Bolter, W.A., 1990. Bedrock geologic map of the Bellows Falls 7.5 x 15-minute quadrangle, Windham and Windsor Counties, Vermont, and Sullivan and Cheshire Counties, New Hampshire: U.S. Geological Survey data release, <https://doi.org/10.3133/d15006>.

Bolter, W.A., 1990. Bedrock geologic map of the Bellows Falls 7.5 x 15-minute quadrangle, Windham and Windsor Counties, Vermont, and Sullivan and Cheshire Counties, New Hampshire: U.S. Geological Survey data release, <https://doi.org/10.3133/d15006>.

Bolter, W.A., 1990. Bedrock geologic map of the Bellows Falls 7.5 x 15-minute quadrangle, Windham and Windsor Counties, Vermont, and Sullivan and Cheshire Counties, New Hampshire: U.S. Geological Survey data release, <https://doi.org/10.3133/d15006>.

Bolter, W.A., 1990. Bedrock geologic map of the Bellows Falls 7.5 x 15-minute quadrangle, Windham and Windsor Counties, Vermont, and Sullivan and Cheshire Counties, New Hampshire: U.S. Geological Survey data release, <https://doi.org/10.3133/d15006>.

Bolter, W.A., 1990. Bedrock geologic map of the Bellows Falls 7.5 x 15-minute quadrangle, Windham and Windsor Counties, Vermont, and Sullivan and Cheshire Counties, New Hampshire: U.S. Geological Survey data release, <https://doi.org/10.3133/d15006>.

Bolter, W.A., 1990. Bedrock geologic map of the Bellows Falls 7.5 x 15-minute quadrangle, Windham and Windsor Counties, Vermont, and Sullivan and Cheshire Counties, New Hampshire: U.S. Geological Survey data release, <https://doi.org/10.3133/d15006>.

Bolter, W.A., 1990. Bedrock geologic map of the Bellows Falls 7.5 x 15-minute quadrangle, Windham and Windsor Counties, Vermont, and Sullivan and Cheshire Counties, New Hampshire: U.S. Geological Survey data release, <https://doi.org/10.3133/d15006>.

Bolter, W.A., 1990. Bedrock geologic map of the Bellows Falls 7.5 x 15-minute quadrangle, Windham and Windsor Counties, Vermont, and Sullivan and Cheshire Counties, New Hampshire: U.S. Geological Survey data release, <https://doi.org/10.3133/d15006>.

Bolter, W.A., 1990. Bedrock geologic map of the Bellows Falls 7.5 x 15-minute quadrangle, Windham and Windsor Counties, Vermont, and Sullivan and Cheshire Counties, New Hampshire: U.S. Geological Survey data release, <https://doi.org/10.3133/d15006>.

Bolter, W.A., 1990. Bedrock geologic map of the Bellows Falls 7.5 x 15-minute quadrangle, Windham and Windsor Counties, Vermont, and Sullivan and Cheshire Counties, New Hampshire: U.S. Geological Survey data release, <https://doi.org/10.3133/d15006>.

Bolter, W.A., 1990. Bedrock geologic map of the Bellows Falls 7.5 x 15-minute quadrangle, Windham and Windsor Counties, Vermont, and Sullivan and Cheshire Counties, New Hampshire: U.S. Geological Survey data release, <https://doi.org/10.3133/d15006>.

Bolter, W.A., 1990. Bedrock geologic map of the Bellows Falls 7.5 x 15-minute quadrangle, Windham and Windsor Counties, Vermont, and Sullivan and Cheshire Counties, New Hampshire: U.S. Geological Survey data release, <https://doi.org/10.3133/d15006>.

Bolter, W.A., 1990. Bedrock geologic map of the Bellows Falls 7.5 x 15-minute quadrangle, Windham and Windsor Counties, Vermont, and Sullivan and Cheshire Counties, New Hampshire: U.S. Geological Survey data release, <https://doi.org/10.3133/d15006>.

Bolter, W.A., 1990. Bedrock geologic map of the Bellows Falls 7.5 x 15-minute quadrangle, Windham and Windsor Counties, Vermont, and Sullivan and Cheshire Counties, New Hampshire: U.S. Geological Survey data release, <https://doi.org/10.3133/d15006>.

Bolter, W.A., 1990. Bedrock geologic map of the Bellows Falls 7.5 x 15-minute quadrangle, Windham and Windsor Counties, Vermont, and Sullivan and Cheshire Counties, New Hampshire: U.S. Geological Survey data release, <https://doi.org/10.3133/d15006>.

Bolter, W.A., 1990. Bedrock geologic map of the Bellows Falls 7.5 x 15-minute quadrangle, Windham and Windsor Counties, Vermont, and Sullivan and Cheshire Counties, New Hampshire: U.S. Geological Survey data release, <https://doi.org/10.3133/d15006>.

Bolter, W.A., 1990. Bedrock geologic map of the Bellows Falls 7.5 x 15-minute quadrangle, Windham and Windsor Counties, Vermont, and Sullivan and Cheshire Counties, New Hampshire: U.S. Geological Survey data release, <https://doi.org/10.3133/d15006>.

Bolter, W.A., 1990. Bedrock geologic map of the Bellows Falls 7.5 x 15-minute quadrangle, Windham and Windsor Counties, Vermont, and Sullivan and Cheshire Counties, New Hampshire: U.S. Geological Survey data release, <https://doi.org/10.3133/d15006>.

Bolter, W.A., 1990. Bedrock geologic map of the Bellows Falls 7.5 x 15-minute quadrangle, Windham and Windsor Counties, Vermont, and Sullivan and Cheshire Counties, New Hampshire: U.S. Geological Survey data release, <https://doi.org/10.3133/d15006>.

Bolter, W.A., 1990. Bedrock geologic map of the Bellows Falls 7.5 x 15-minute quadrangle, Windham and Windsor Counties, Vermont, and Sullivan and Cheshire Counties, New Hampshire: U.S. Geological Survey data release, <https://doi.org/10.3133/d15006>.

Bolter, W.A., 1990. Bedrock geologic map of the Bellows Falls 7.5 x 15-minute quadrangle, Windham and Windsor Counties, Vermont, and Sullivan and Cheshire Counties, New Hampshire: U.S. Geological Survey data release, <https://doi.org/10.3133/d15006>.

Bolter, W.A., 1990. Bedrock geologic map of the Bellows Falls 7.5 x 15-minute quadrangle, Windham and Windsor Counties, Vermont, and Sullivan and Cheshire Counties, New Hampshire: U.S. Geological Survey data release, <https://doi.org/10.3133/d15006>.

Bolter, W.A., 1990. Bedrock geologic map of the Bellows Falls 7.5 x 15-minute quadrangle, Windham and Windsor Counties, Vermont, and Sullivan and Cheshire Counties, New Hampshire: U.S. Geological Survey data release,