

## Bedrock Geologic Map of the Eagle Lake Quadrangle, Essex County, New York

By  
Gregory J. Walsh,<sup>1</sup> Sean P. Regan,<sup>1,2</sup> Phillip S. Geer,<sup>1,3</sup> Arthur J. Merschat,<sup>1</sup> Kaitlyn A. Suarez,<sup>2</sup> Ryan J. McAleer,<sup>1</sup> Matt S. Walton, Jr.,<sup>1</sup> and E. Allen Crider, Jr.<sup>1</sup>  
2026

<sup>1</sup>U.S. Geological Survey,  
University of Alaska, Fairbanks, Alaska  
<sup>2</sup>University of Massachusetts, Amherst, Mass.  
<sup>3</sup>Yale University, New Haven, Conn., declined

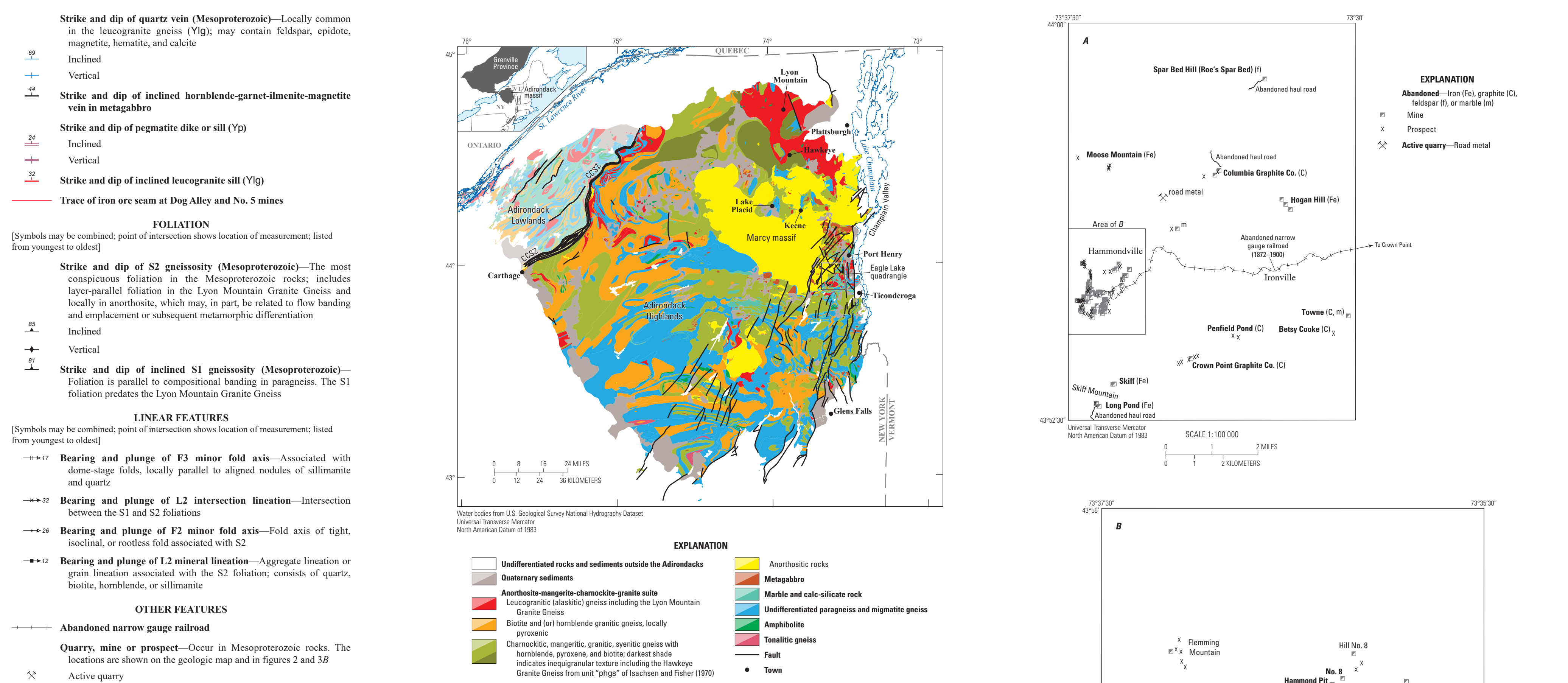


Figure 2. Map of the Eagle Lake quadrangle, Essex County, New York, showing the location of the Eagle Lake quadrangle within the larger context of the Adirondacks. The map highlights the location of the Eagle Lake quadrangle within the larger context of the Adirondacks. The map highlights the location of the Eagle Lake quadrangle within the larger context of the Adirondacks.

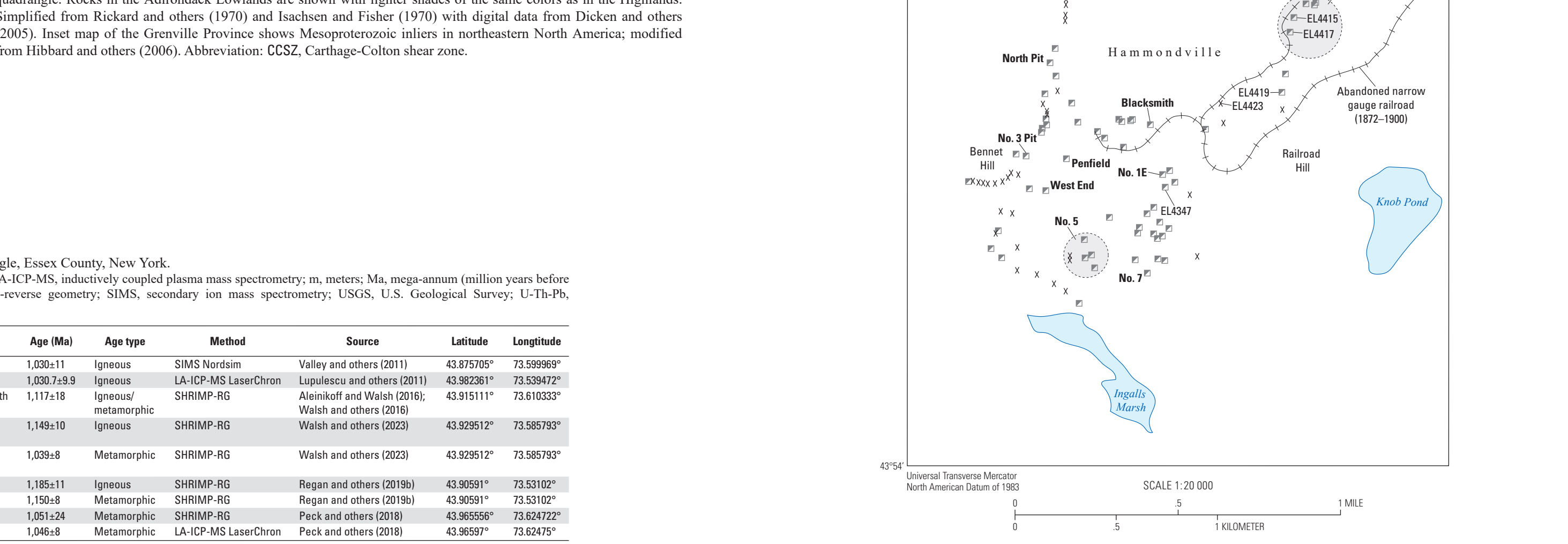


Figure 2. Map of the Eagle Lake quadrangle, Essex County, New York, showing the location of the Eagle Lake quadrangle within the larger context of the Adirondacks. The map highlights the location of the Eagle Lake quadrangle within the larger context of the Adirondacks. The map highlights the location of the Eagle Lake quadrangle within the larger context of the Adirondacks.

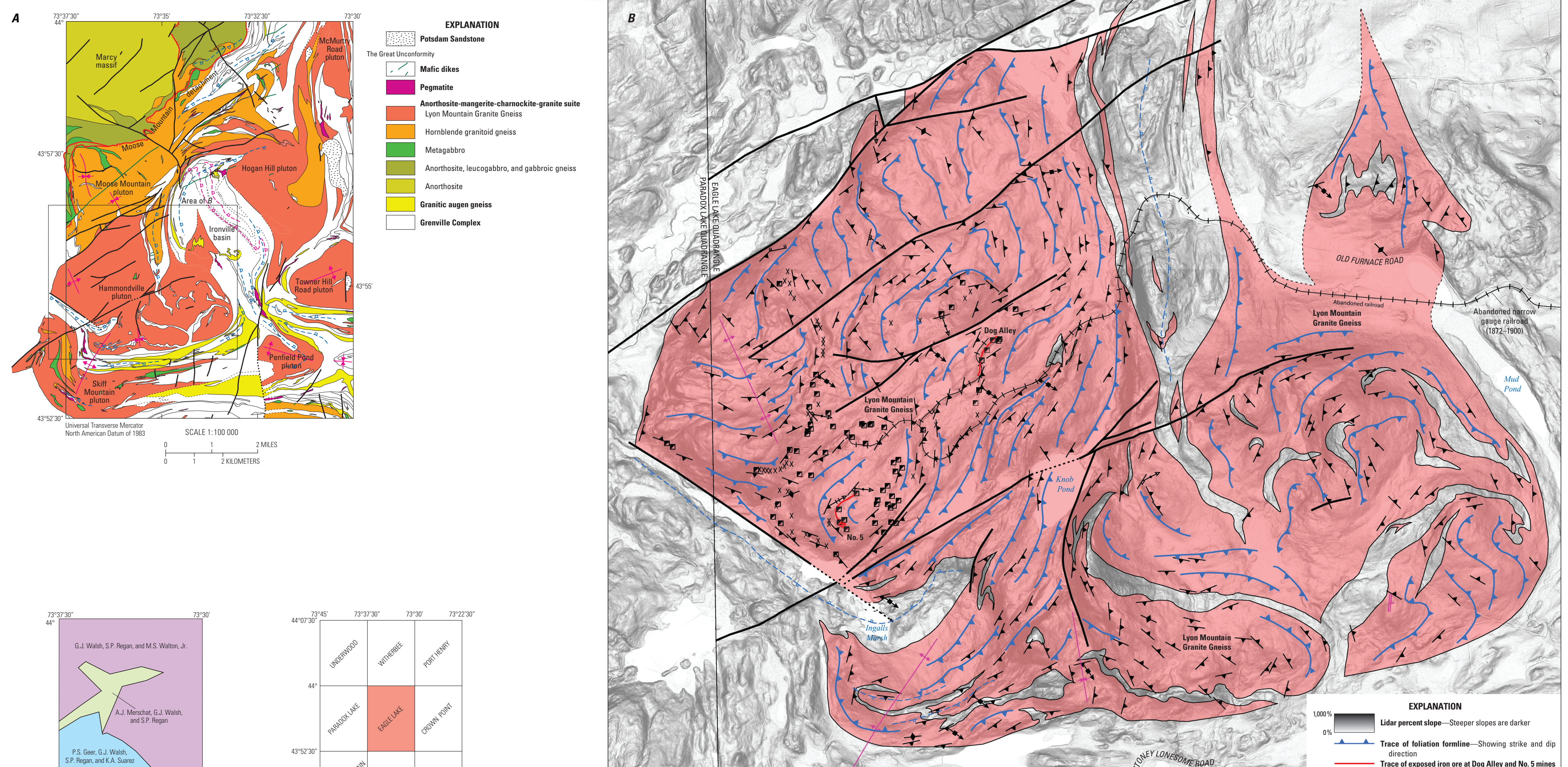


Figure 3. A geologic map of the Eagle Lake quadrangle and part of the adjacent Paradox Lake quadrangle, Essex County, New York, showing major faults and structures. The map highlights the location of the Eagle Lake quadrangle within the larger context of the Adirondacks. The map highlights the location of the Eagle Lake quadrangle within the larger context of the Adirondacks.

Any use of trade, firm, or product names in this publication is for descriptive purposes only and does not imply endorsement or approval by the U.S. Geological Survey. The U.S. Geological Survey is an Equal Opportunity Employer. Minorities and women are encouraged to apply. The U.S. Geological Survey is an Equal Opportunity Employer. Minorities and women are encouraged to apply. The U.S. Geological Survey is an Equal Opportunity Employer. Minorities and women are encouraged to apply.