

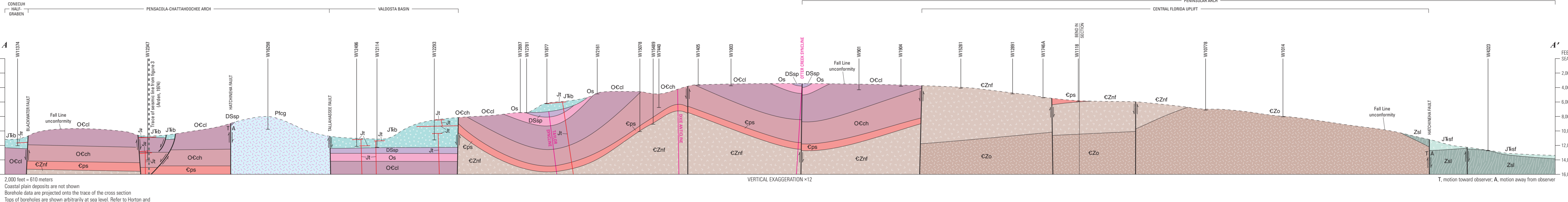
- ### LIST OF MAP UNITS
- [See Description of Map Units in pamphlet for complete unit descriptions]
- EARLY MESOZOIC RIFT-RELATED ROCKS**
    - Jrb North Florida tholeiites (Early Jurassic)—Shown in cross section only
    - Jrfd Southwest Florida volcanic province (Early Jurassic to Late Triassic)
    - Jsb Clastic sedimentary rocks and porphyritic rhyolites, undifferentiated (Jurassic and Triassic)
  - ALLEGHANIAN GRANITOIDS**
    - Plog Fox Creek granite (Permian)
    - Pg Granodiorite (Permian)
  - SUWANNEE TERRANE**
    - Du Marine and terrestrial strata, undifferentiated (Middle Devonian)
    - DSap San Pedro Bay shale (Lower Devonian to middle Silurian [Wenlock])
    - Os Smith formation (Ordovician)
    - OCcl Cherry Lake formation (Ordovician to Cambrian)
    - OCch Cooks Hammock formation (Ordovician to Cambrian)
    - Cps Pumpkin Swamp formation (Cambrian)
  - OSCEOLA ARC**
    - CZnf North Florida volcanic series (Cambrian to Neoproterozoic)
    - CZo Osceola intrusive complex (Cambrian to Neoproterozoic)
  - ST. LUCIE METAMORPHIC COMPLEX**
    - Zs St. Lucie Metamorphic Complex (Neoproterozoic?)
  - GASKIN INTRUSIVE COMPLEX**
    - Zp Gaskin intrusive complex (Neoproterozoic)

- ### EXPLANATION OF MAP SYMBOLS
- Contact—Intrusive or stratigraphic. Approximately located. All contacts are concealed; inferred beneath coastal plain strata from borehole data and from interpretation of gravity and aeromagnetic data.
- FAULTS**  
[Strike-slip faults may also have a component of normal fault movement. All faults are approximately located and concealed; inferred beneath coastal plain strata from borehole data and from interpretation of gravity and aeromagnetic data. On cross section, arrows indicate relative direction of vertical movement; strike-slip movement is indicated by A, away from observer; T, toward observer.]
- Normal fault—Ball and bar on downthrown block
  - Oblique-slip fault—Arrows show relative motion; ball and bar on downthrown block
  - Strike-slip fault—Arrows show relative motion
- FOLDS**  
[Showing trace of axial surface, direction of dip of limbs, and direction of plunges. Folds are approximately located and are inferred beneath coastal plain strata from borehole data and from interpretation of gravity and aeromagnetic data.]
- Anticline
  - Syncline
- BOREHOLES**  
[Symbol denotes type of basement rock encountered. Symbols may be combined where multiple basement rock types were encountered. Borehole designations marked with an asterisk are described in the companion data report (Deasy and others, 2026b).]
- W1811 Dike, sill, or lava flow of the North Florida tholeiites (map unit Jb)
  - W1201 Lower Mesozoic sedimentary rock
  - W999 Paleozoic sedimentary rock
  - W1321 Felsic volcanic rock
  - W1537 Intermediate volcanic rock
  - W1487 Mafic volcanic rock
  - W1014 Granite or granodiorite
  - W1890 Metamorphic rock
- OTHER FEATURES**
- 3,000 Structure contour on top of basement rocks—Showing elevation in feet below sea level; contour interval is 1,000 feet
  - Trace of seismic line—From figure 3 (see Arden, 1974)

Base modified from U.S. Geological Survey, The National Map, 2021, and other digital data.  
Florida Albers Equal-Area Conic projection (linear), standard parallels 24° and 31°30' N, central meridian 84° W.  
North American Datum of 1983 (NAD83)

SCALE 1:1 000 000  
NORTH AMERICAN VERTICAL DATUM OF 1988

Geology interpreted from core and cuttings samples by Deasy and Lupo 2020-2022. Location of faults and contacts were informed by aeromagnetic and gravity maps that were reprocessed by Deasy. Compilation and database by Crider and Deasy. Edited by James R. Estabrook and Zachary P. Younger. Cartography by D. Paul Mathews.



## Geologic Map of Pre-Middle Jurassic Basement Rocks Beneath the Atlantic and Gulf Coastal Plains in Florida

By  
Ryan T. Deasy,<sup>1</sup> J. Wright Horton, Jr.,<sup>2</sup> Shannon N. Glock,<sup>3</sup> Mary E. Lupo,<sup>4</sup> E. Allen Crider, Jr.,<sup>1</sup> and David L. Daniels<sup>5</sup>  
2026

<sup>1</sup>U.S. Geological Survey, retired (email).  
<sup>2</sup>Geo-Technology Associates, Inc.  
<sup>3</sup>Florida Geological Survey.  
<sup>4</sup>U.S. Geological Survey, retired.

Any use of trade, firm, or product names is for descriptive purposes only and does not imply endorsement by the U.S. Government.  
For sale by U.S. Geological Survey, Box 25288, Denver Federal Center, Denver, CO 80225.  
https://doi.org/10.3133/SI3543  
Suggested citation: Deasy, R.T., Horton, J.W., Jr., Glock, S.N., Lupo, M.E., Crider, E.A., Jr., and Daniels, D.L., 2026, Geologic map of pre-Middle Jurassic basement rocks beneath the Atlantic and Gulf Coastal Plains in Florida: U.S. Geological Survey Scientific Investigations Map 3543, 1 sheet, scale 1:1,000,000, 37 p., available at <https://doi.org/10.3133/SI3543>.  
Associated data for this publication: Deasy, R.T., Horton, J.W., Jr., Glock, S.N., and Lupo, M.E., 2025, Geomorphological data from selected pre-Middle Jurassic basement rocks beneath the Atlantic and Gulf Coastal Plains in Florida and Alabama: U.S. Geological Survey data release, <https://doi.org/10.3133/D1500001>.  
Associated data for this publication: Deasy, R.T., Horton, J.W., Jr., Glock, S.N., and Lupo, M.E., 2024, Mineral abundance of selected pre-Middle Jurassic basement rocks beneath the Atlantic and Gulf Coastal Plains in Florida and Alabama from whole-rock geochemical data: U.S. Geological Survey data release, <https://doi.org/10.3133/D1500002>.  
Associated data for this publication: Deasy, R.T., Horton, J.W., Jr., Glock, S.N., Lupo, M.E., Crider, E.A., Jr., and Daniels, D.L., 2020, Database for the geologic map of pre-Middle Jurassic basement rocks beneath the Atlantic and Gulf Coastal Plains in Florida: U.S. Geological Survey data release, <https://doi.org/10.3133/D1500003>.  
Associated data for this publication: Deasy, R.T., Horton, J.W., Jr., Glock, S.N., Daniels, D.L., and Deasy, R.T., 2023, Borehole logs for pre-Middle Jurassic basement rocks beneath the Atlantic and Gulf Coastal Plains, Florida and Alabama: U.S. Geological Survey data release, <https://doi.org/10.3133/D1500004>.