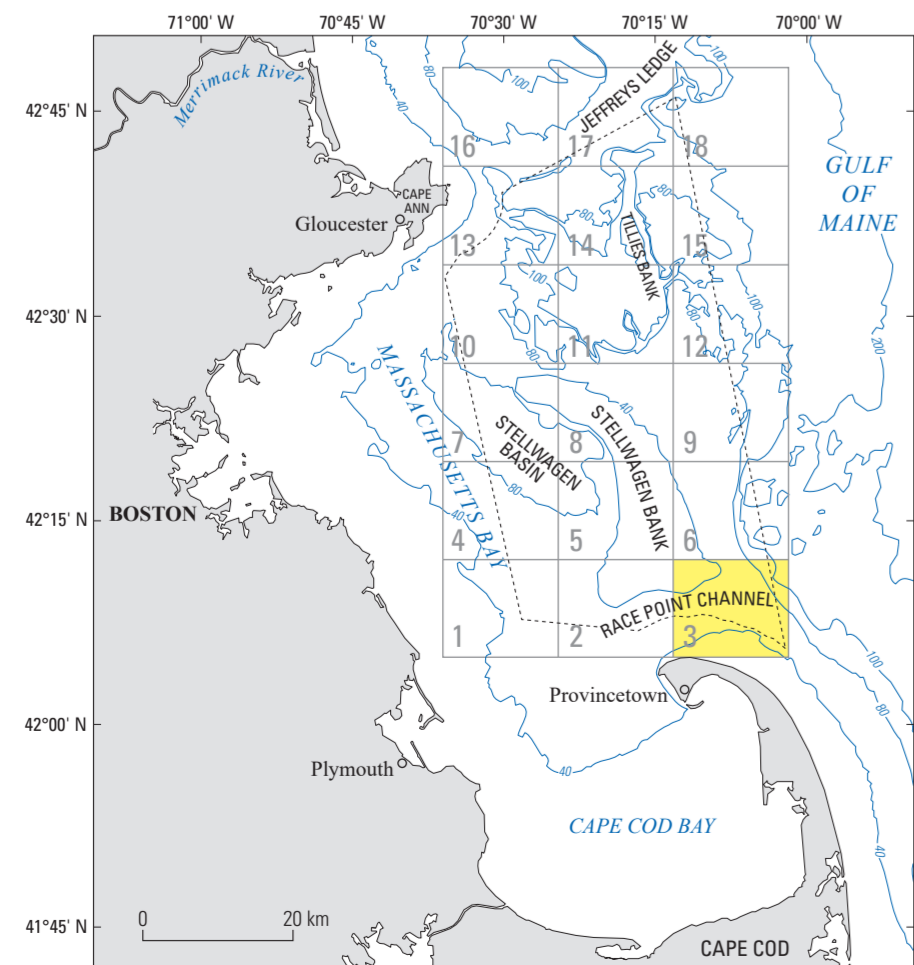
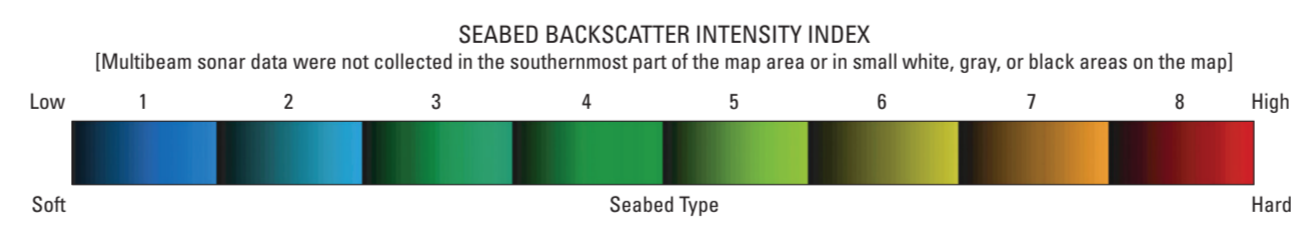
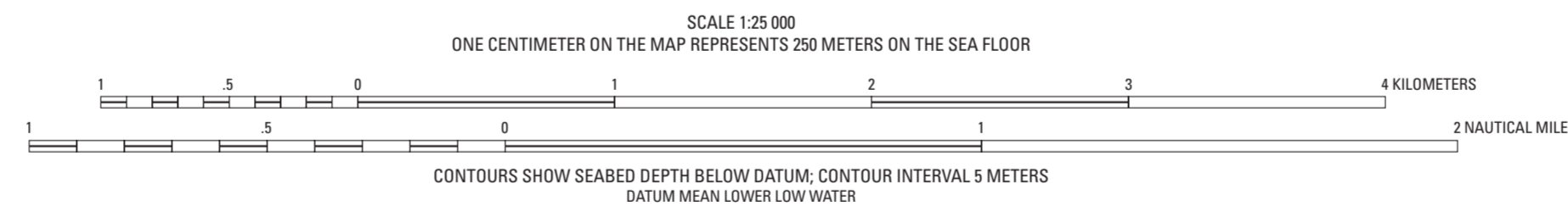


Mercator projection
Geodetic Reference System 1980; North American Datum of 1983
Longitude of central meridian 70°19' W; latitude of true scale 41°29' N
False easting 0 m; false northing 0 m
This map is not intended for navigational purposes



Location Map. Map showing the location of quadrangle 3 (highlighted in yellow) of the Stellwagen Bank National Marine Sanctuary region offshore of Boston, Massachusetts. The numbered grid indicates the quadrangles of the U.S. Geological Survey multibeam sonar substrate-mapping project. The dashed line represents the Stellwagen Bank National Marine Sanctuary boundary. Bathymetric contours are labeled in meters and the contour interval is variable. Figure modified from Valentine and Cross (2024).

Map C.—Backscatter Intensity and Sun-Illuminated Topography
Seabed Maps Showing Topography, Ruggedness, Backscatter Intensity, Sediment Mobility, and the Distribution of Geologic Substrates in Quadrangle 3 of the Stellwagen Bank National Marine Sanctuary Region Offshore of Boston, Massachusetts

By
Page C. Valentine and VeeAnn A. Cross
2026

Any use of trade, firm, or product names is for descriptive purposes only and does not imply endorsement by the U.S. Government.
For sale by U.S. Geological Survey, Box 25286, Denver Federal Center, Denver, CO 80225; <https://store.usgs.gov>; 1-888-ASK-USGS (1-888-275-8747).
Suggested citation: Valentine, P.C., and Cross, V.A., 2026, Backscatter intensity and sun-illuminated topography, map C of Seabed maps showing topography, ruggedness, backscatter intensity, sediment mobility, and the distribution of geologic substrates in quadrangle 3 of the Stellwagen Bank National Marine Sanctuary region offshore of Boston, Massachusetts, U.S. Geological Survey Scientific Investigations Map 3544, 8 sheets, scale 1:25,000, 30-p. pamphlet, <https://doi.org/10.3133/sim3544>.
Associated data for this publication: Valentine, P.C., and Cross, V.A., 2026, Geospatial datasets of seabed topography, sediment mobility, and the distribution of geologic substrates in quadrangle 3 of the Stellwagen Bank National Marine Sanctuary region offshore of Boston, Massachusetts, U.S. Geological Survey data release, <https://doi.org/10.5066/P13P4H8L>.