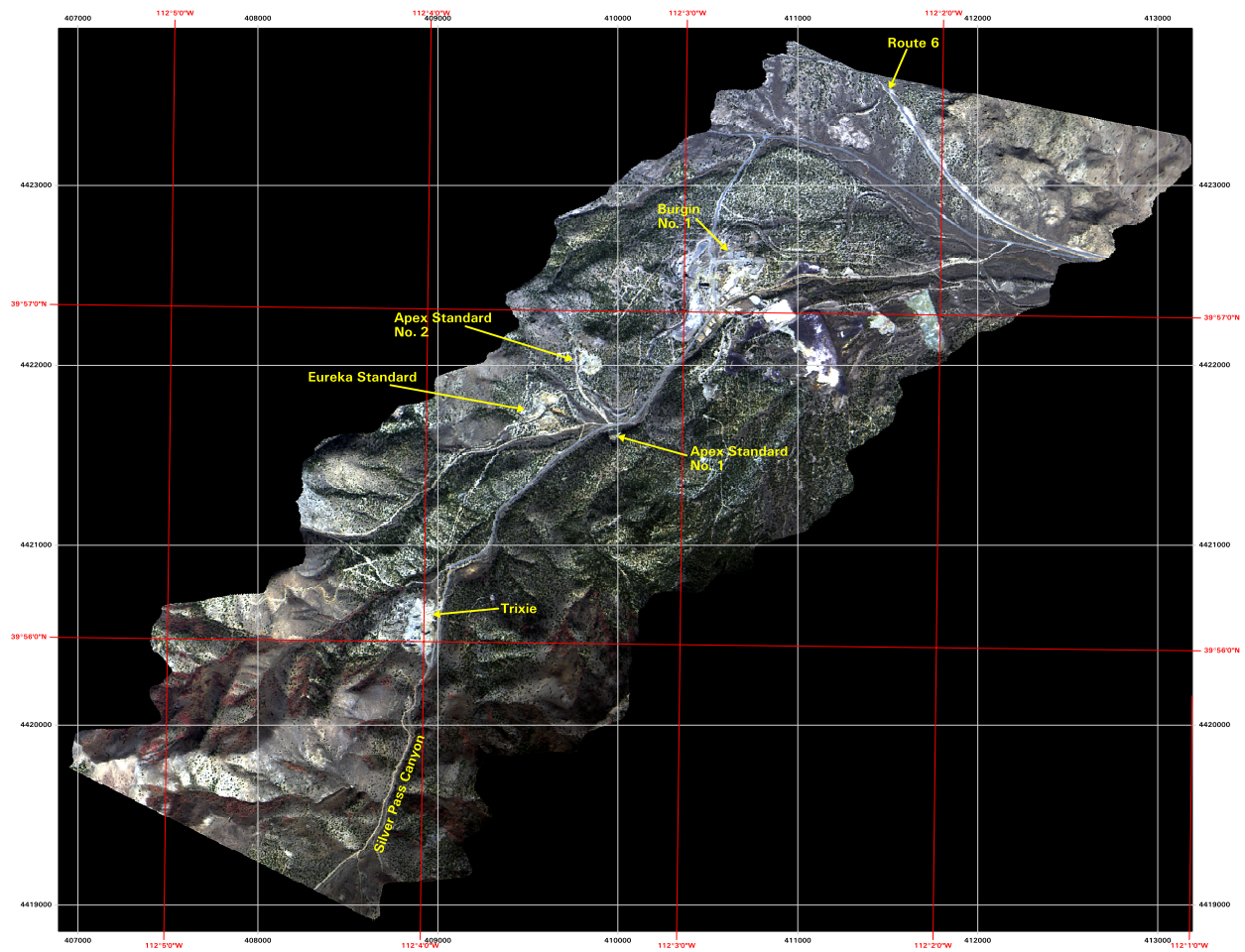




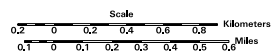
East Tintic Mining District, Utah and Juab Counties, Utah

True-color composite, low-altitude AVIRIS imagery



Low-altitude AVIRIS flightline data:

- flightline designation: 1991019101p02_r06
- acquisition date: October 18, 1999
- altitude of Twin Otter platform: 17,500 feet
- ground speed: 85.5 knots
- geocorrected pixel size: 3 meters



UTM Projection
Zone 12
Clarke 1866 Spheroid
NAD27 Datum

