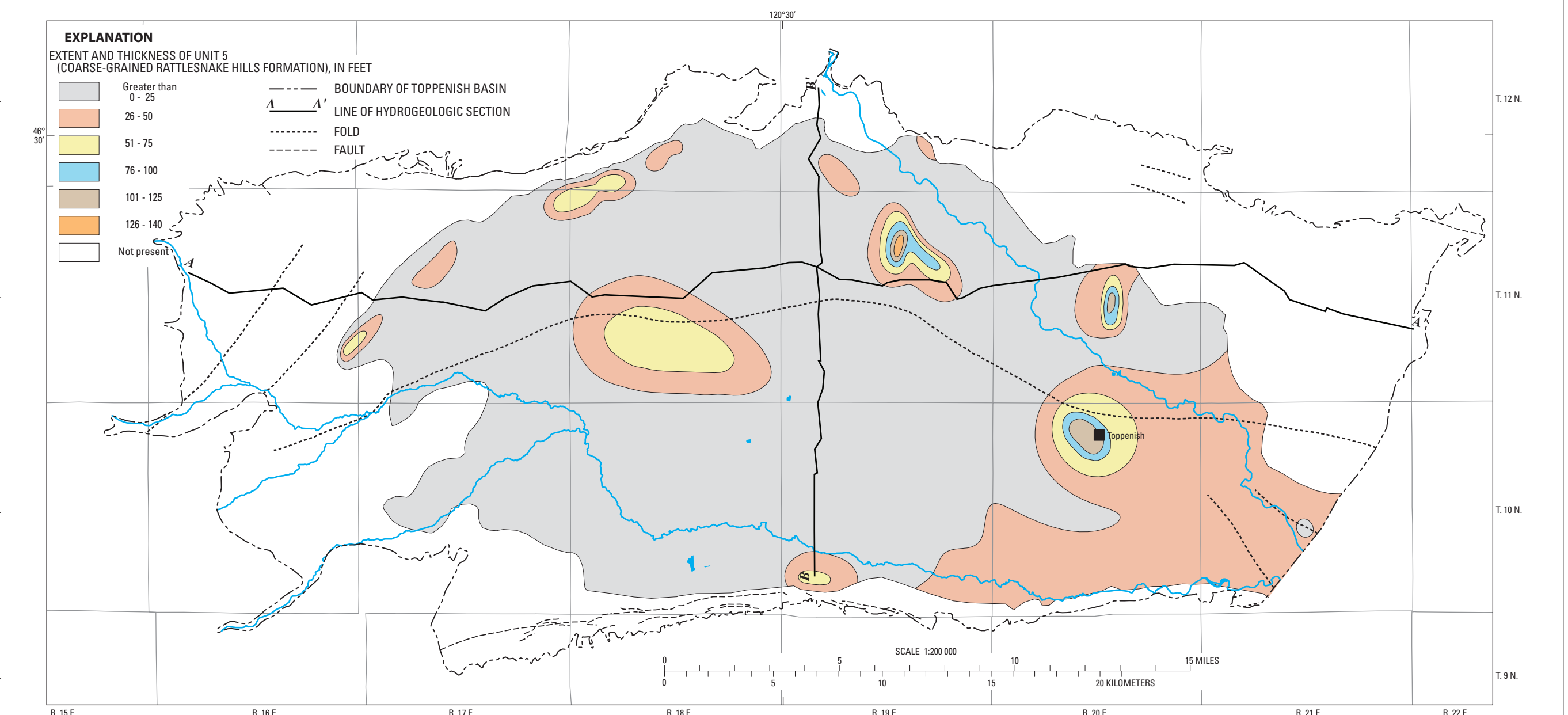
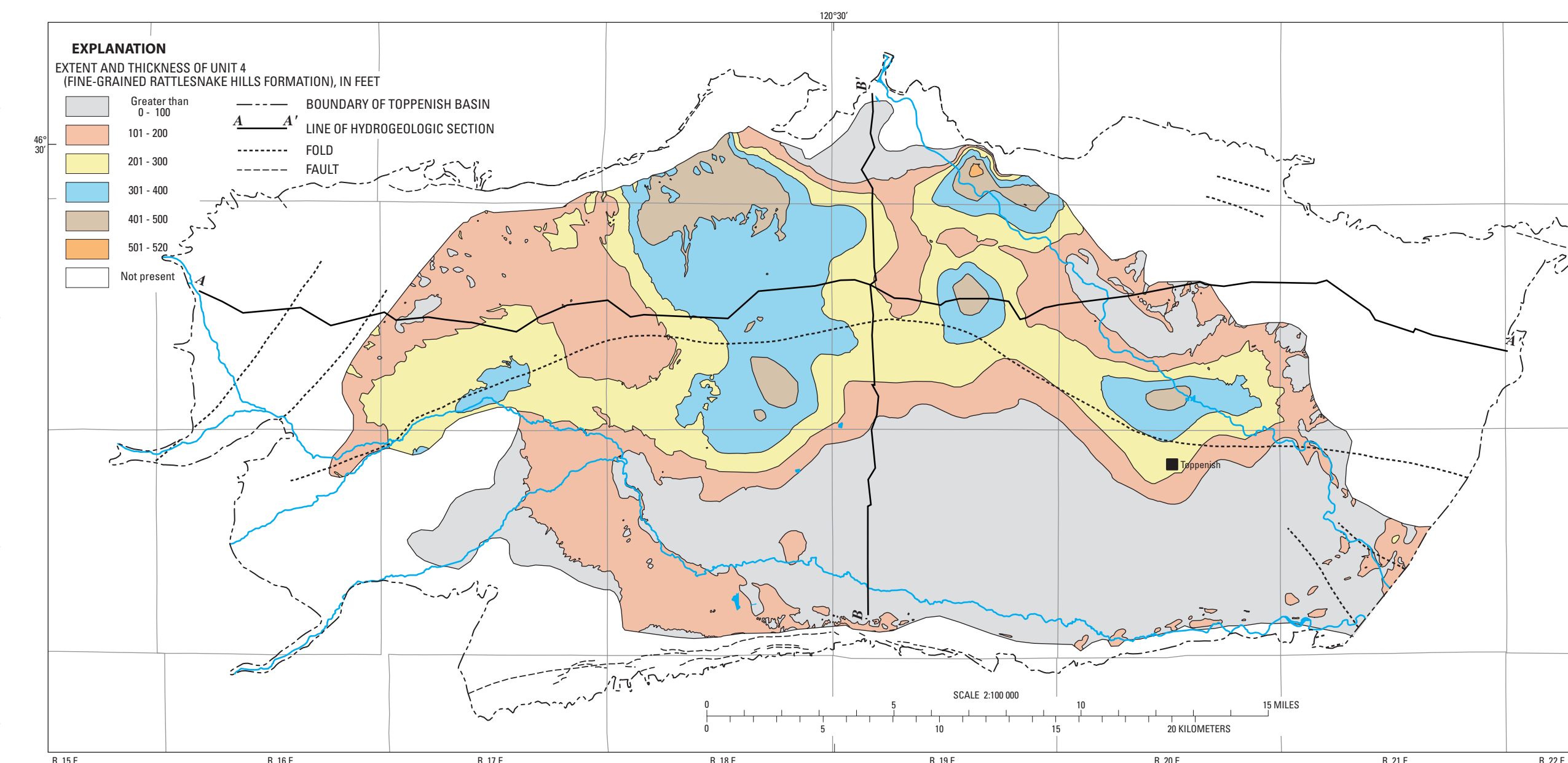
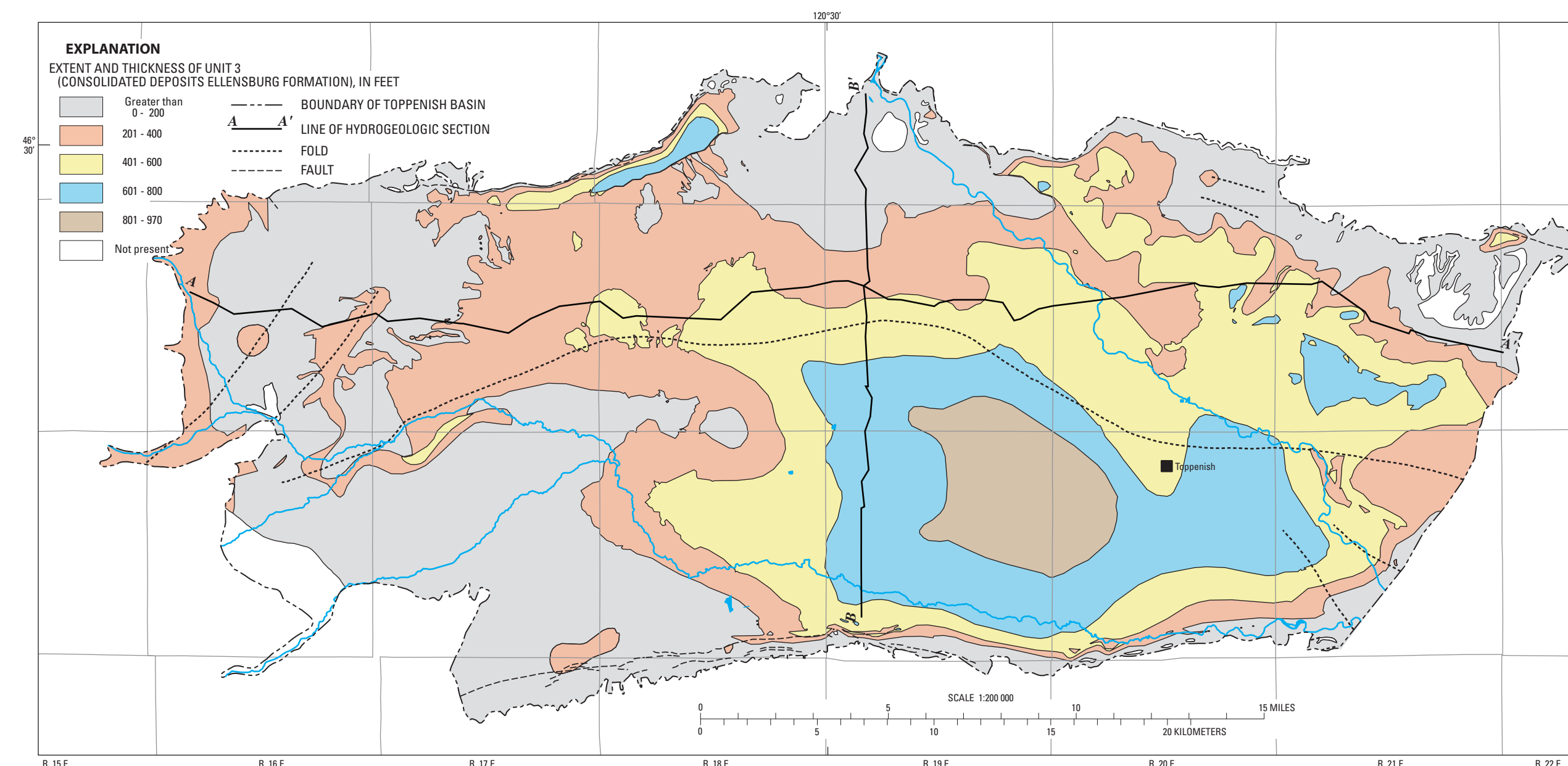
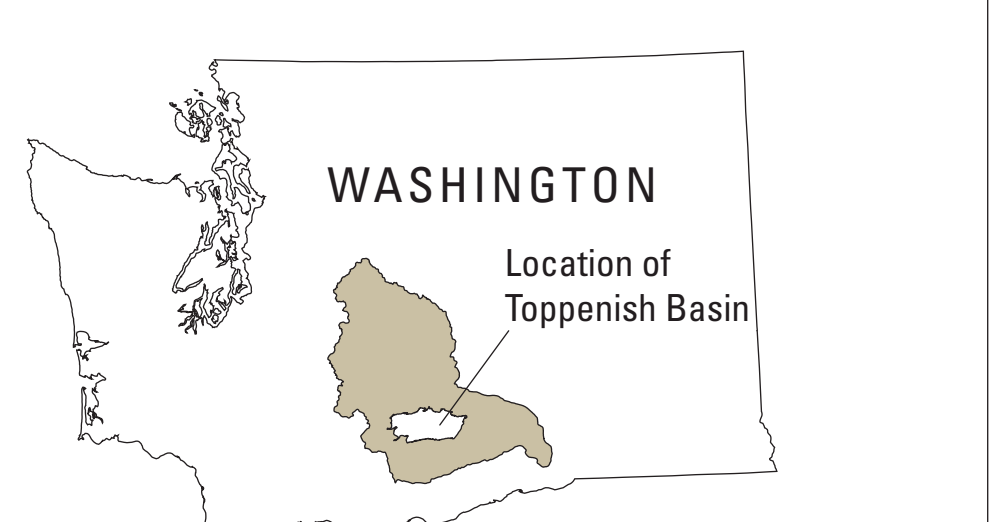
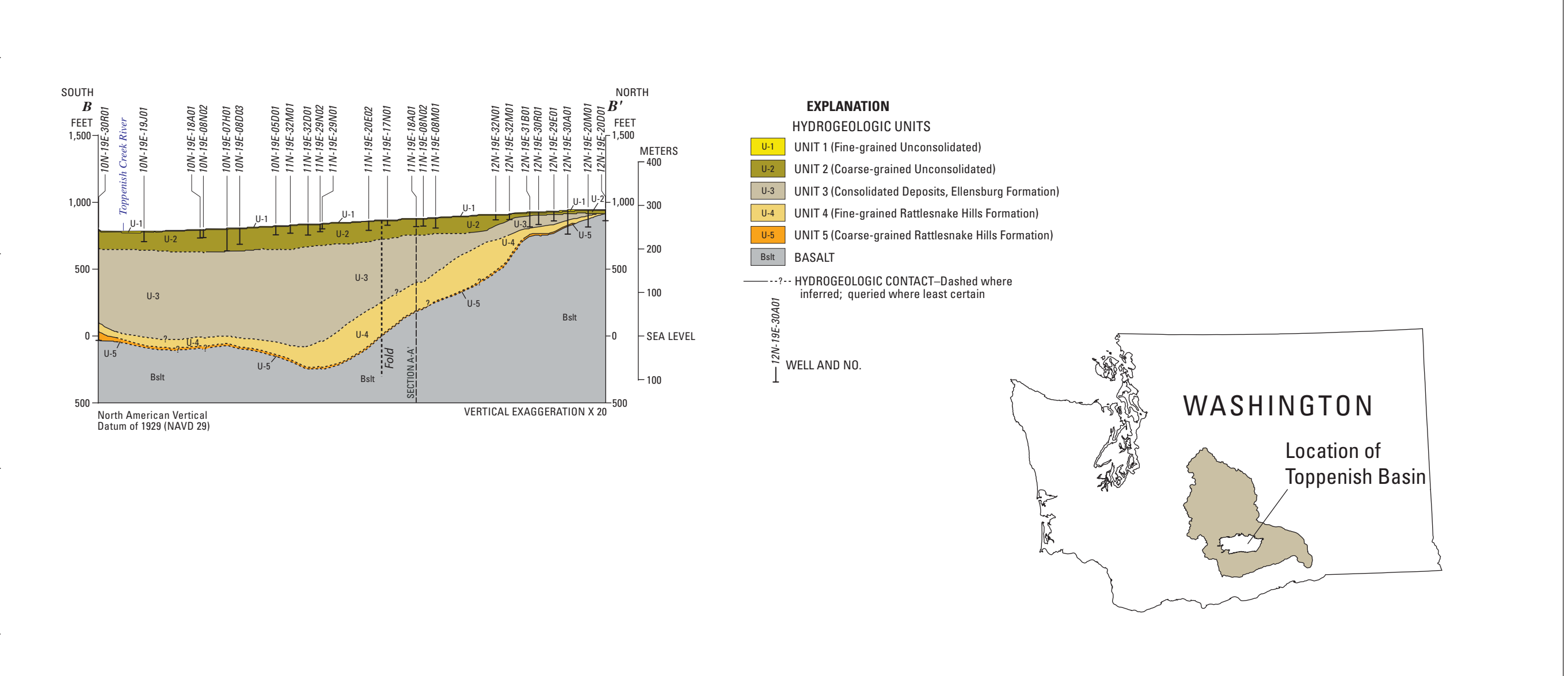
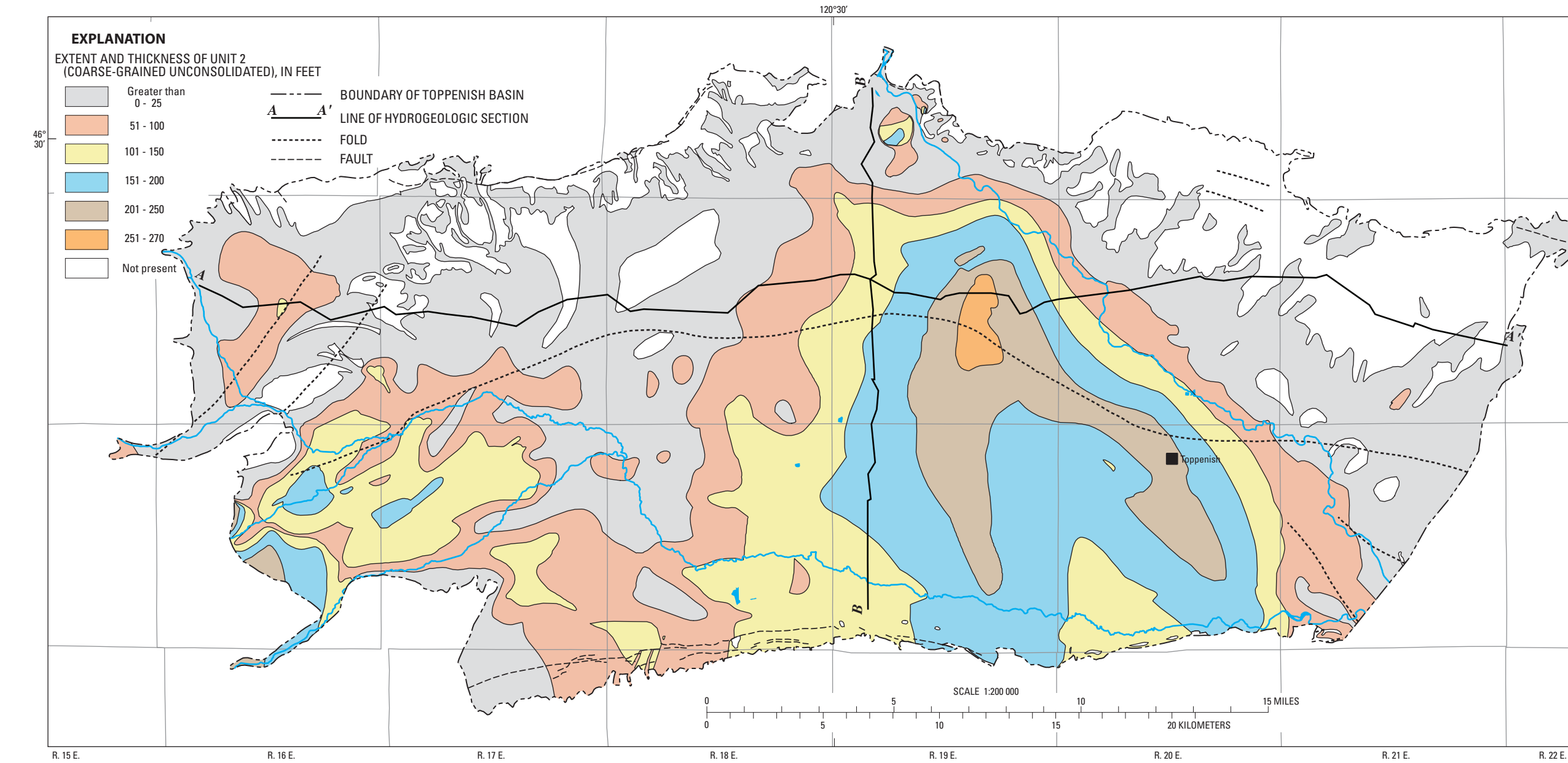
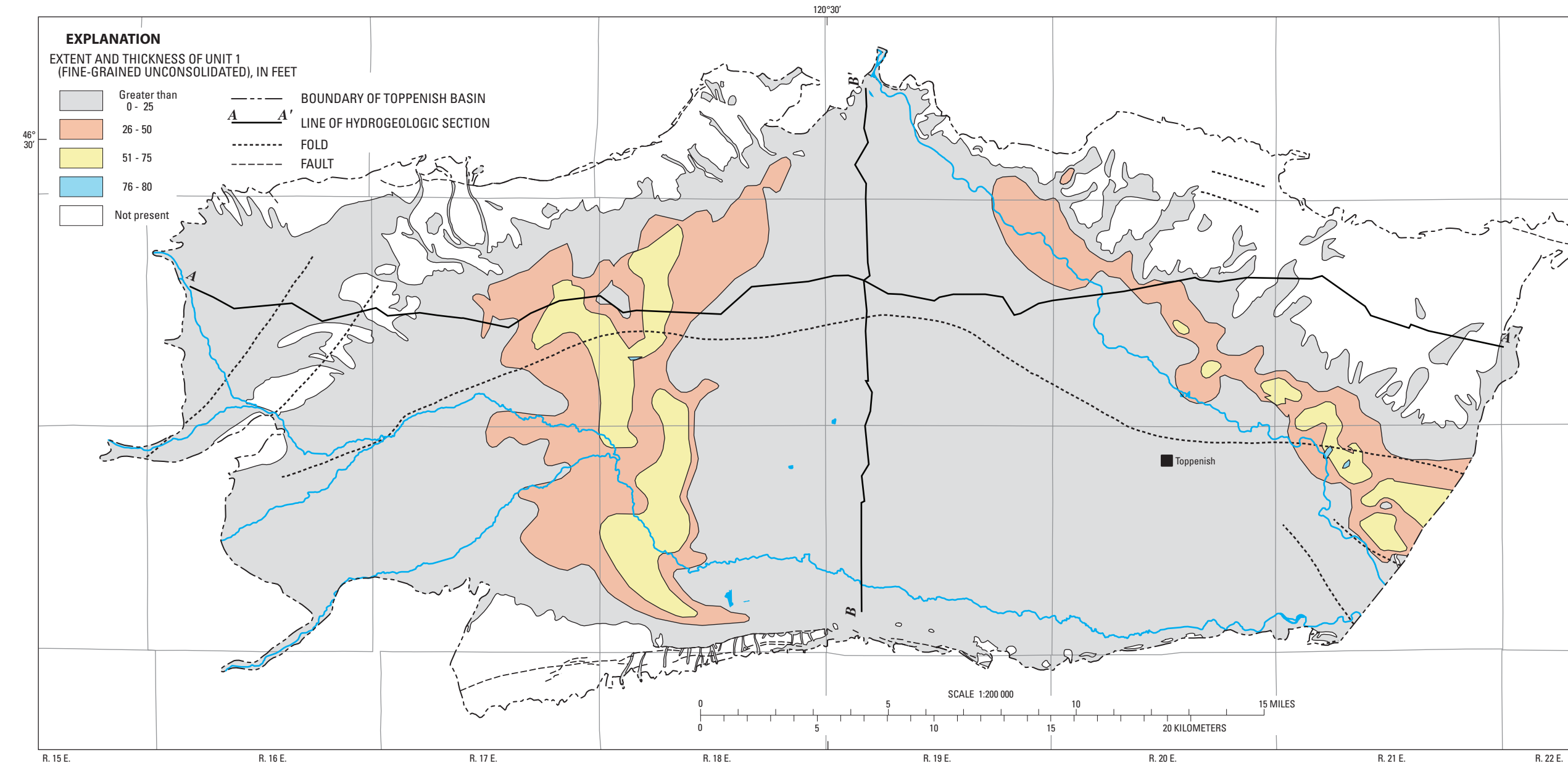
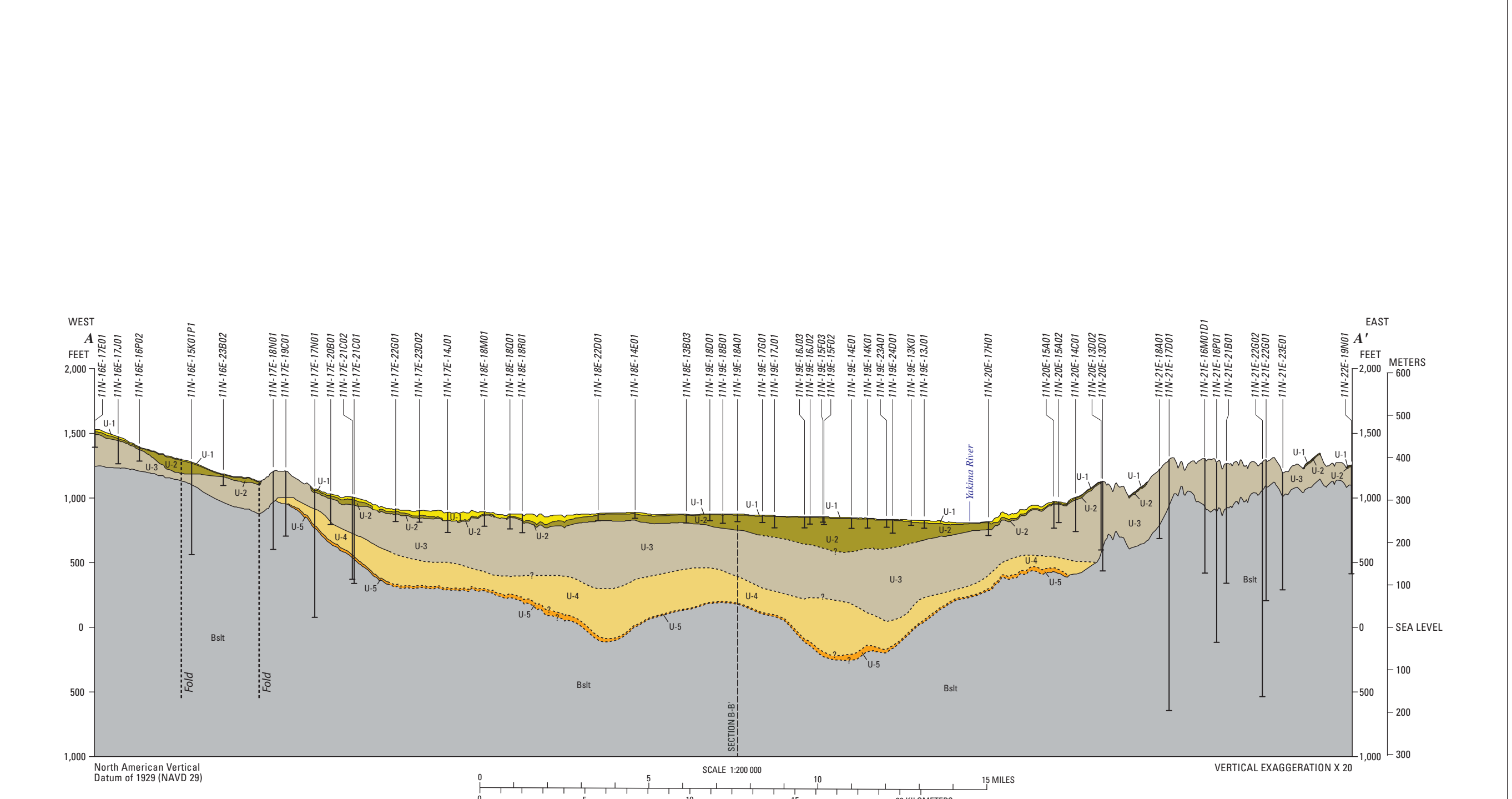
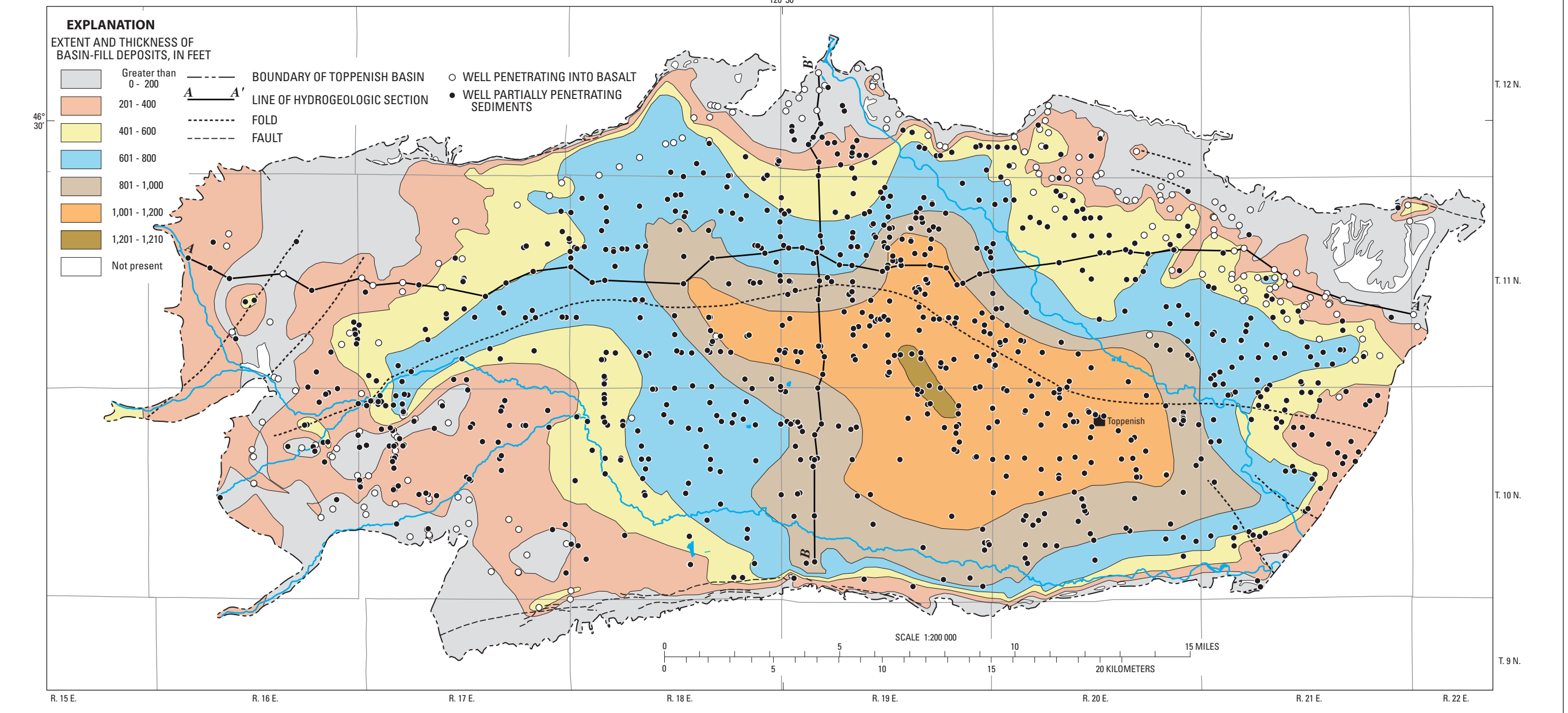


Base from U.S. Geological Survey and Washington State Department of Ecology and Earth Resources  
Digital data file: 1161000  
U.S. Geological Survey, Reston, Virginia, 2006  
Horizontal datum: North American Datum of 1983 (NAD 83)



Maps and Hydrogeologic Sections Showing Surficial Geology, Extent and Thickness of Basin-fill Deposits, Hydrogeologic Units, and Locations of Selected Wells in the Toppenish Basin, Yakima River Basin, Washington  
By  
Myrtle A. Jones, John Vaccaro, and Anni M. Watkins  
2006